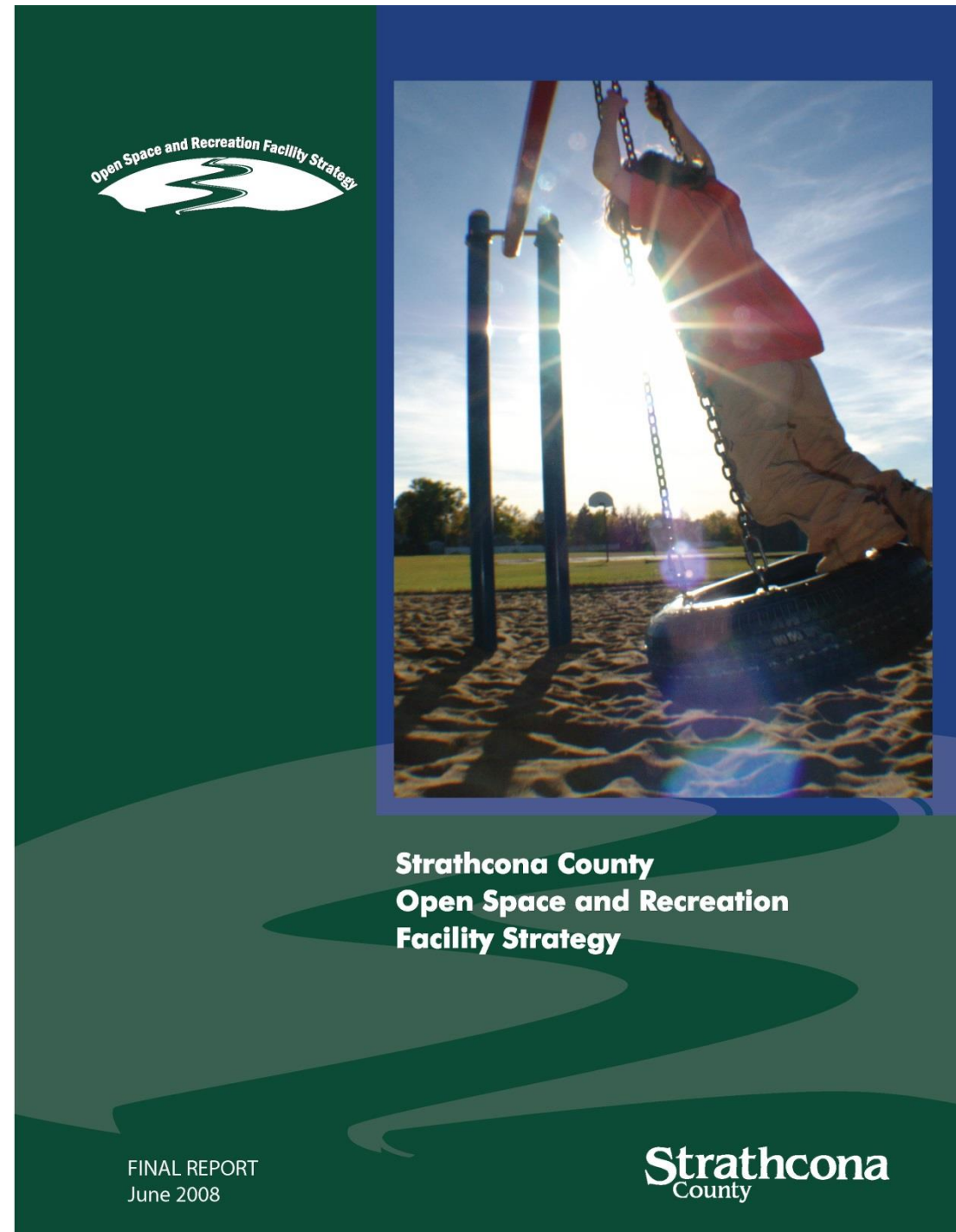


Outdoor Aquatic Spray Deck and Spray Park Strategy

February 21, 2017

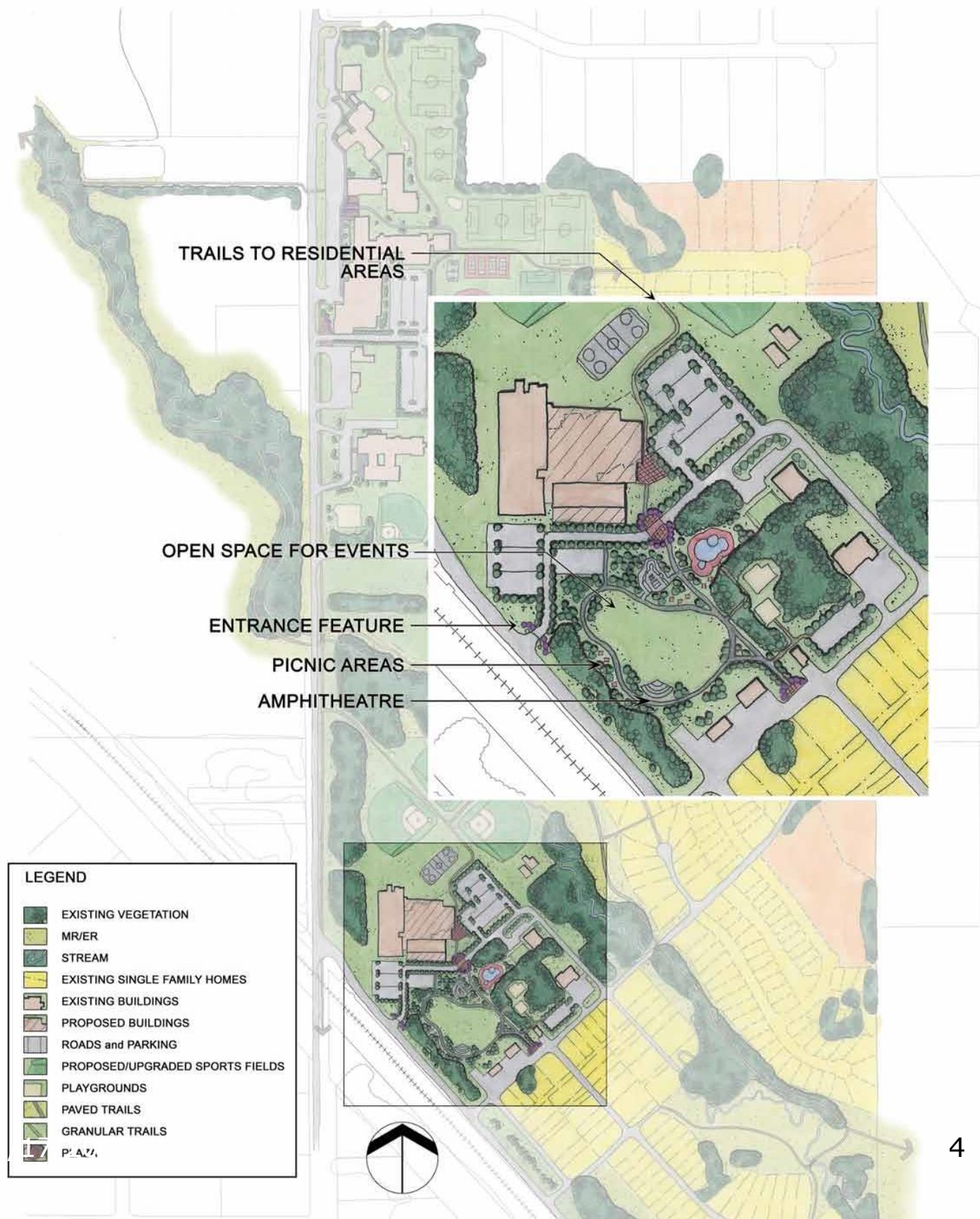
Background





Open Space and Recreation Facility Strategy (2008)

Ardrossan Community Recreation Master Plan (2009)





Strathcona
County

- Brentwood Park
- Kinsmen / Westboro Park
- Heritage Hills Park
- South Cooking Lake Park

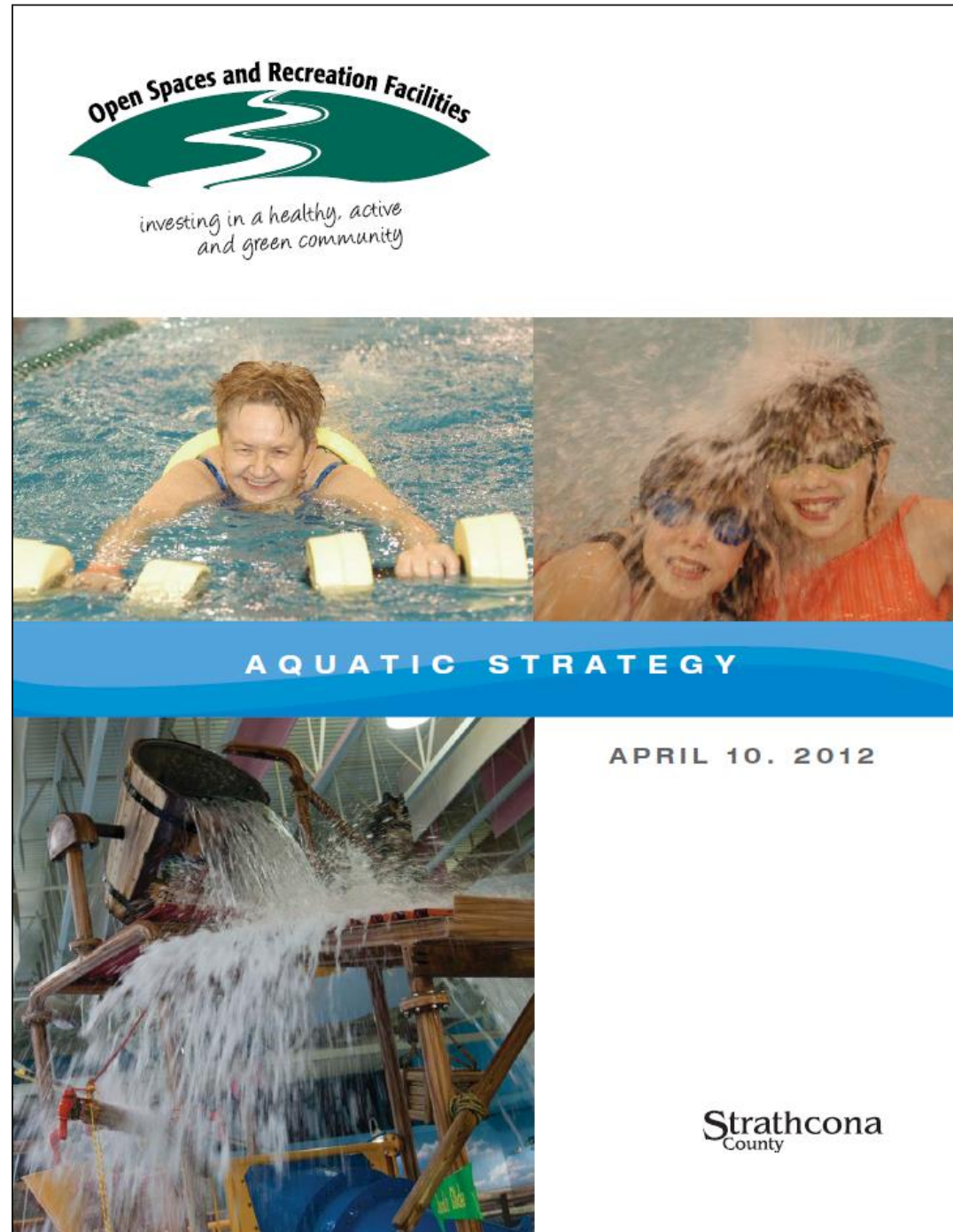
Park Master Plans Final Report

March 23, 2010



EIDOS

Park Master Plans (2010)



Aquatic Strategy (2012)

Outdoor Aquatic Spray Deck and Spray Park Strategy

- Phase 1 - Data gathering - Spring 2016
- Phase 2 - Public engagement - Summer 2016
- Phase 3 - Preliminary draft strategy - Summer 2016
- Phase 4 – Review draft two and three – Fall/Winter 2016
- Phase 5 – Final Strategy - 2017

Outdoor Aquatic Spray Deck and Spray Park Inventory

- Two non-operational outdoor spray decks (Village on the Lake Park, Clover Bar Junior High Park)
- Six operational outdoor spray decks and spray parks (Woodbridge Farms Park, Kinsmen Westboro Park, Brentwood Park, Granville Park, Clover Bar Ranch Park, Broadmoor Lake Park)



Aquatic Facility Locations

Indoor Aquatic Facilities

1. Millennium Place
2. Emerald Hills Leisure Centre
3. Kinsmen Leisure Centre

Outdoor Aquatic Spray Deck and Spray Park Facilities

1. Kinsmen Westboro
2. Village on the Lake
3. Woodbridge Farms
4. Clover Bar Junior High
5. Broadmoor Lake
6. Brentwood
7. Granville
8. Clover Bar Ranch

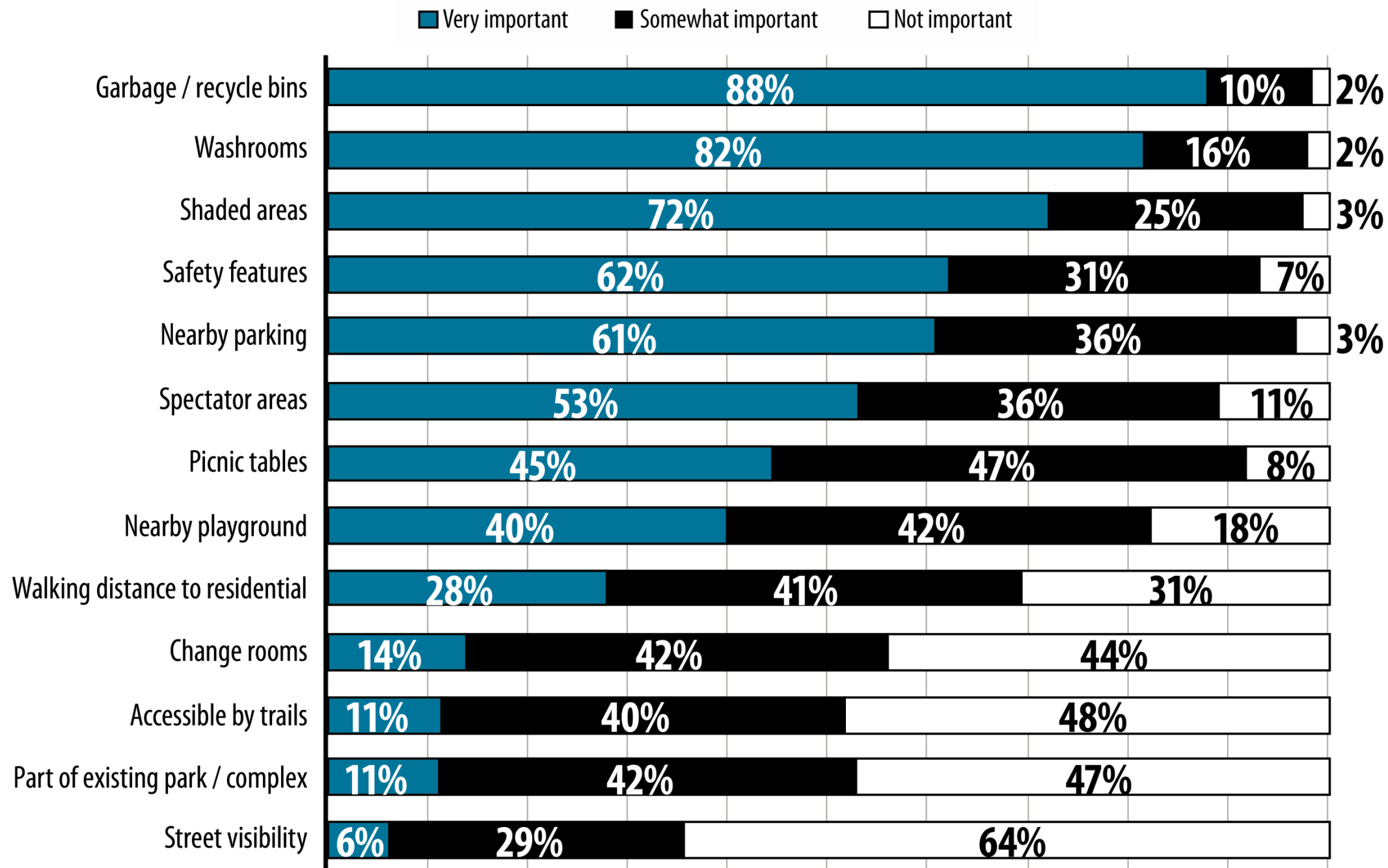
Public Engagement Feedback

- Older spray decks have little in the way of features. They need to be modernized.
- This would allow for better crowd-management at the Broadmoor Lake Spray Park location.
- The concrete surface is unsafe as are the water heads and the “box” in the middle. The surface needs to be changed and the areas need to be made safer.
- Washrooms are needed.
- There were a number of comments received about the challenges of having volunteers turn the water on. Having Strathcona County staff manage this, or having sensors or timed buttons, would enable use throughout the day rather than relying on a volunteer.

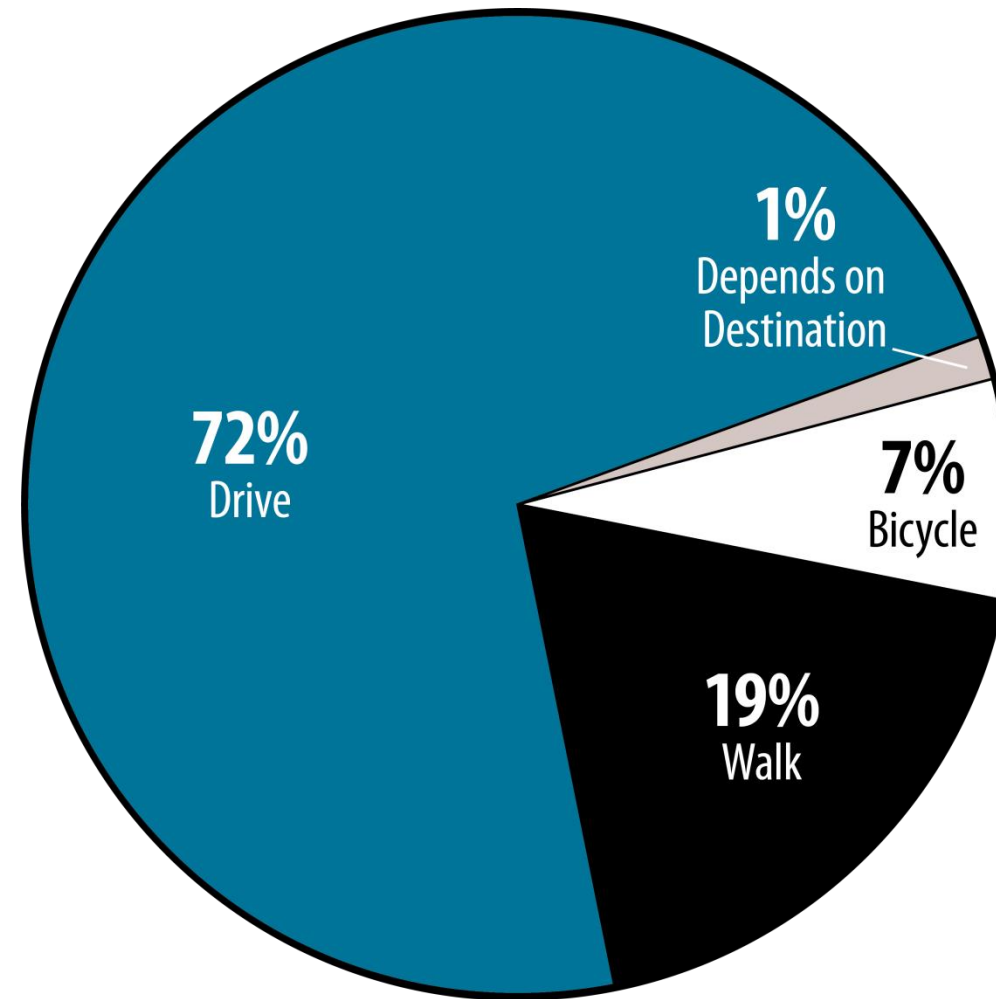
Public Engagement Feedback

- The existing outdoor aquatic facilities are very busy and overcrowded. Adding more facilities would help take the pressure off the existing sites.
- The population of the County is growing and there are a lot of children. Additional amenities are needed to accommodate this growing population.
- There were many calls to look beyond Sherwood Park for any new spray parks/decks. Rural residents would appreciate having better access to this amenity.
- A variety of neighbourhoods in Sherwood Park itself were identified as suggested future sites for any outdoor aquatic facility. Many of these are on the east side of Sherwood Park.

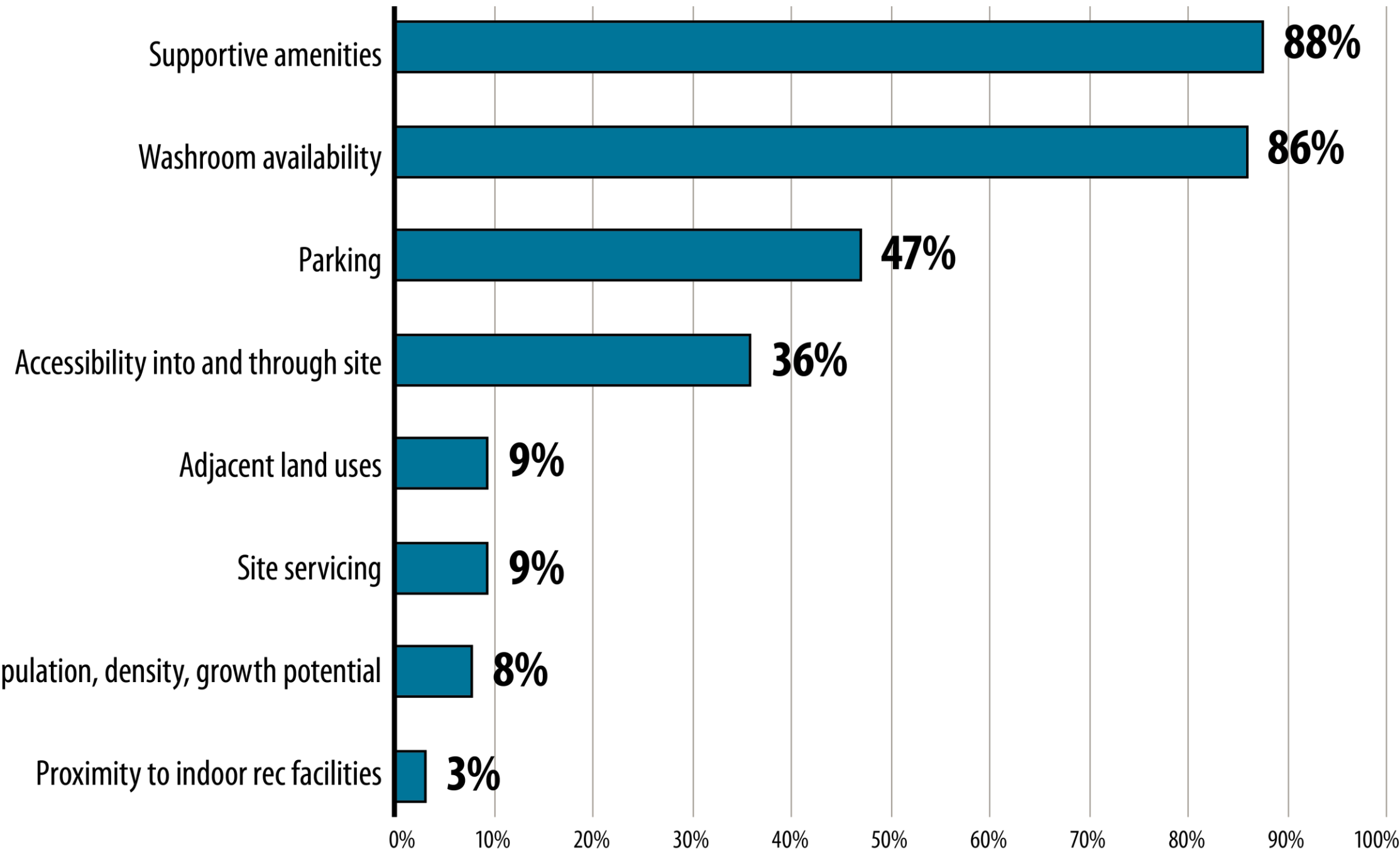
Importance of Amenities



Typical mode of transportation to outdoor aquatic spray deck and spray park facilities



What are the most important criteria for outdoor aquatic spray deck and spray park sites?



Guiding Principles

- Strathcona County will endeavor to provide outdoor aquatic spray deck and spray park facilities that are free and **accessible to all residents and visitors**.
- Strathcona County will consider outdoor aquatic spray deck and spray park facilities that **meet contemporary market expectations** related to the actual program area as well as complimentary amenities.
- Strathcona County will support investment in **environmentally friendly design and practice** where feasible.
- Strathcona County will strive to achieve **geographic balance** when providing current and future outdoor aquatic spray deck and spray park facilities based on need and demographic analysis.

Spray Deck



Spray Decks Design Standards

- Located in community or regional parks
- 200-300 square meters in size
- Drain to waste or store
- Higher operational costs/lower construction costs
- Water conservation occurs because
 - limited number of components to restrict water flow
 - not all components run at the same time
 - control systems can automatically turn on/off
- No supervision is required
- Require washrooms, parking, and shade at minimum
- Cost is estimated at a minimum of \$450,000 (costs do not include the supportive amenities that complement these facilities)
- Amenities are approximately 10% of the facility construction cost

Spray Park



Spray Parks Design Standards

- Located in regional parks, preferably at an indoor facility
- 500-700 square meters in size
- Recirculating water
- Lower operational costs/higher construction costs
- Water conservation occurs because
 - not all components run at the same time
 - control systems can automatically turn on/off
- Supervision/monitoring required
- Easier to provide supportive amenities (washrooms, picnic areas, parking, shade, lighting) as they often exist with indoor facilities
- Cost is estimated at a minimum of \$1,000,000 (costs do not include the supportive amenities that complement these facilities)
- Amenities are approximately 10% of the facility construction cost

Site Assessment Tool

- Metrics based on the following criteria:
 - Available Services – Water, sanitary and electrical
 - Site Characteristics – Park size and designation, population density in proximity to park, population age demographics in proximity to park, adjacent land uses, vehicle and pedestrian access, proximity to transit, existing facility, washroom availability, change room availability, parking, topography, and shade
 - Spatial Requirements – for overspray, seating, and structures

Recommendation

	Action	Conceptual Cost
Short Term 2017-2021	Decommission Village on the Lake and Clover Bar Junior High spray decks	\$40,000
	Design Ardrossan Park with outdoor aquatic facility	\$80,000
	Install re-circulating spray park and amenities at Ardrossan Recreation Centre	\$1,500,000
	Design and install spray deck and amenities in Sherwood Park (site as per assessment tool)	\$495,000
	Cost Estimates	\$2,115,000
Mid-Term 2022-2026	Decommission two older spray decks-sites as per assessment tool	\$40,000
	Design and install spray deck and amenities in Sherwood Park (site as per assessment tool)	\$495,000
	Cost Estimates	\$535,000
Long Term 2027-2032	Decommission two older spray decks-sites as per assessment tool	\$40,000
	Cost Estimates	\$40,000
	Total Cost Estimate	\$2,690,000

Questions