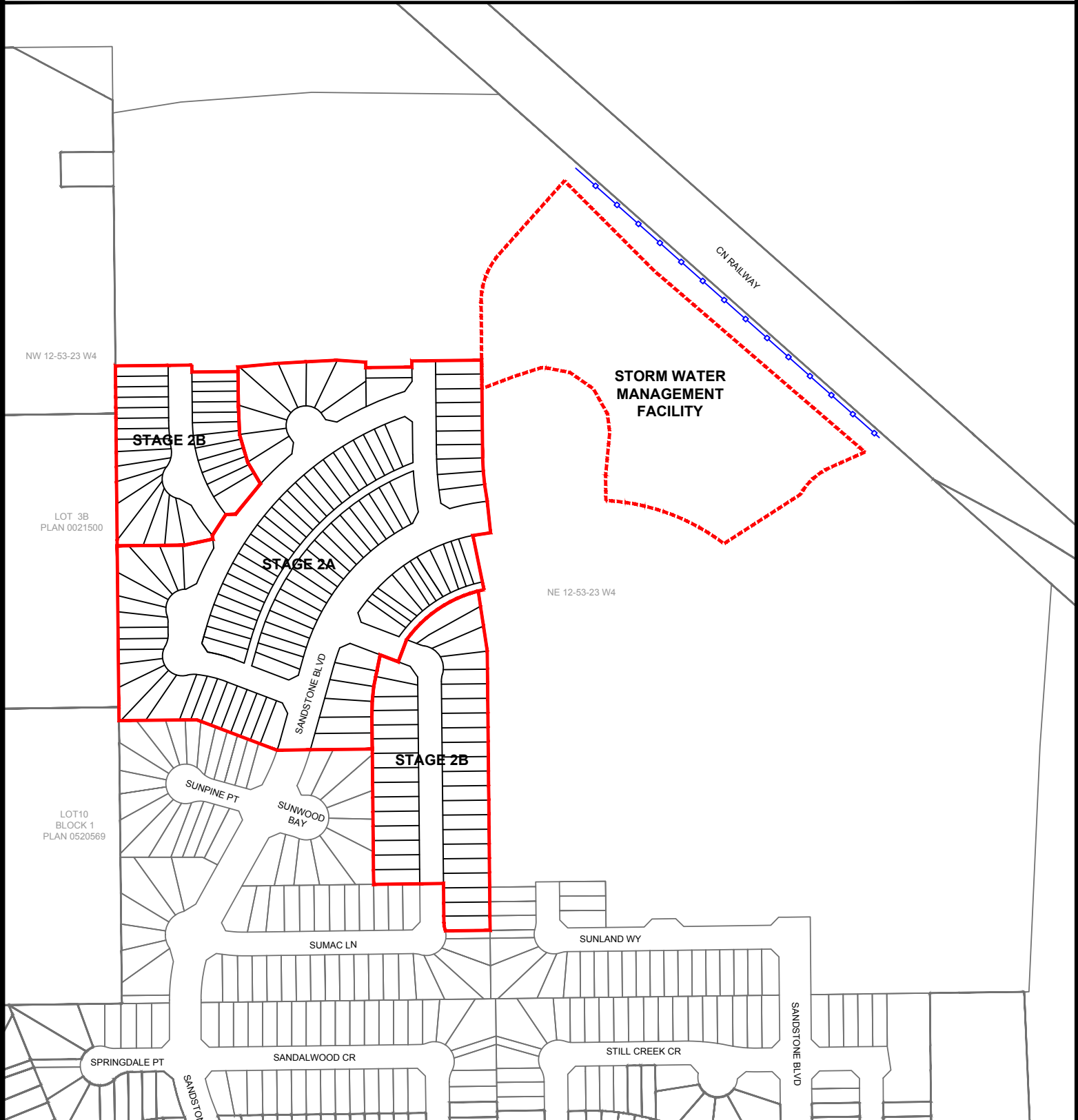


SCHEDULE "B-1"

Development Area - Summerwood North Stage 2



SUMMERWOOD NORTH STAGE 2 NE 12-53-23-W4

Overall Development Boundary
Development Area = 8.95 ha (22.12 ac) ±

SWMF

—●—●—●— Fencing

Drawn By: J. Cavers

Date Drawn: July 13, 2016

Scale: Not to Scale

File No.: 4050-2015S026

Revision Date:

Revision No.

Dwg. No.:

PLANNING & DEVELOPMENT SERVICES

STRATHCONA
COUNTY