

# Social Framework

Strathcona County Council Presentation  
May 23, 2017

# Why a new approach?



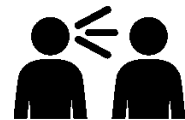
Food bank usage



Unemployment rate



Number of people waiting for subsidized housing



Reported incidents of domestic violence



Mental health referrals

**As a community we want better results**



JOIN THE CONVERSATION  
[STRATHCONA.CA/COMMUNITYTALK](http://STRATHCONA.CA/COMMUNITYTALK)



# Steering Committee Members

## **Business**

- Sherwood Park Chamber of Commerce

## **Committees and Clubs**

- Community Living Advisory Committee
- Sherwood Park 55 Plus Club

## **Education**

- Elk Island Catholic School Division
- Elk Island Public School Division

## **Emergency Services**

- Royal Canadian Mounted Police

## **Faith community**

- Ministerial Association of Strathcona County  
(Heartland Alliance Church)

## **Government**

- Government of Alberta (Community and Social Services)
- Strathcona County (Communications, Corporate Planning and Intergovernmental Affairs, Family and Community Services, Recreation Parks and Culture, Transit)

## **Health**

- Addiction and Mental Health Services  
Alberta Health Services
- Primary Care Network
- Strathcona County Health Centre &  
Fort Saskatchewan Health Unit

## **Housing**

- Heartland Housing Foundation

## **Social Serving Organizations**

- A Safe Place
- Chimo Youth Retreat Centre
- Information and Volunteer Centre
- Linking Generations
- Parents Empowering Parents
- Robin Hood Association
- SAFFRON Centre
- The Salvation Army

## **Strathcona County Library**

# Outcomes we are trying to achieve

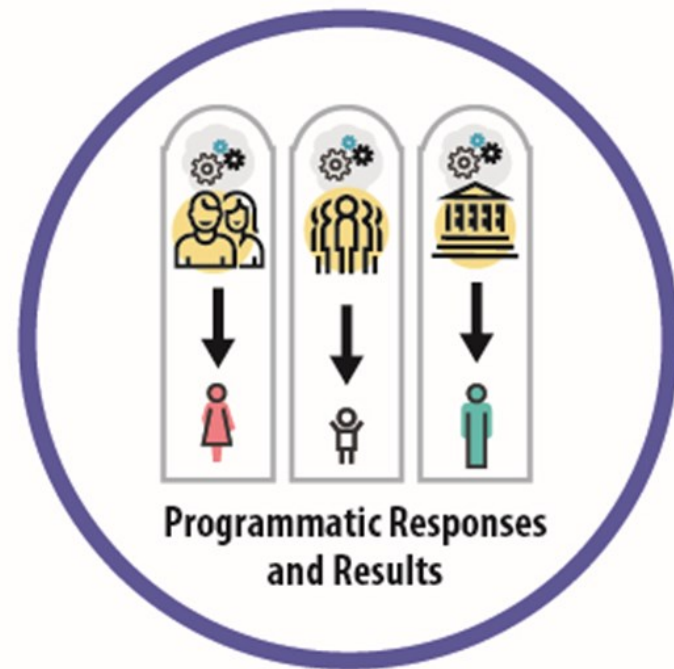


# Alignment with Strathcona County Strategic Plan

Strategic Plan: Our Priorities	Social Framework Alignment
<ul style="list-style-type: none"> <li>Goal #4: Increase public involvement and communicate with the community on issues affecting the County's future.</li> </ul>	<ul style="list-style-type: none"> <li>The Community Talk public engagement campaign saw significant public involvement and was an opportunity to identify the issues that impact the County's social well-being.</li> <li>Aligns with the Outcome of 'Connectedness and Inclusion'.</li> <li>Aligns with the Shift of 'Do <i>with</i> people'.</li> </ul>
<ul style="list-style-type: none"> <li>Goal #7: Build strong neighbourhoods/ communities to support the diverse needs of our residents.</li> </ul>	<ul style="list-style-type: none"> <li>Aligns with the Outcome of 'Connectedness and Inclusion'.</li> </ul>
<ul style="list-style-type: none"> <li>Goal #8: Provide a climate of safety for individuals in homes, neighbourhoods and public places.</li> </ul>	<ul style="list-style-type: none"> <li>Aligns with the Outcome of 'Safety'.</li> </ul>
<ul style="list-style-type: none"> <li>Goal #11: Ensure facilities and activities are available, accessible and used by residents.</li> </ul>	<ul style="list-style-type: none"> <li>Aligns with the Outcome of 'Access to Programs and Services'.</li> </ul>

# The Need for a New Approach

Traditional Response



Systems Response



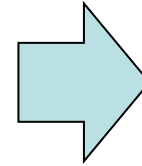
Outcomes we are trying to achieve





# Shifting our thinking

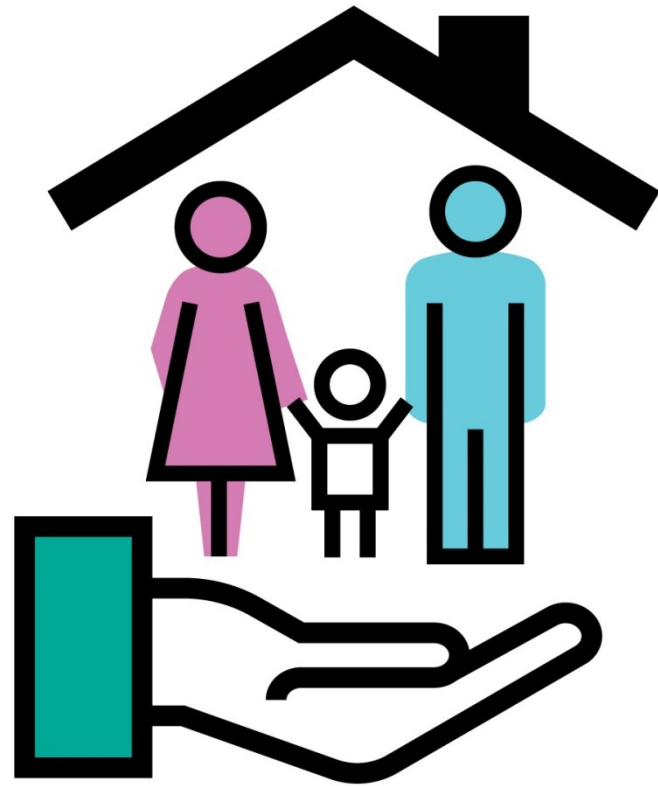
FROM
<b>Programmatic responses</b>
<b><i>Do for</i> people</b>
<b>Incremental, organization-level outcomes</b>
<b>Working in silos</b>
<b>Focus on symptoms</b>



TO
<b>Systemic thinking</b>
<b><i>Do with</i> people</b>
<b>High aspiration and community-wide outcomes</b>
<b>Collective ownership</b>
<b>Focus on root causes</b>



# Change Stories: The Social Framework in Action



**Bridging the Gap**  
**Increasing**  
**Affordable Housing**  
**in Strathcona County**

# Change Stories: The Social Framework in Action

**Community Hub**  
**Increasing Access  
to Programs and  
Services**



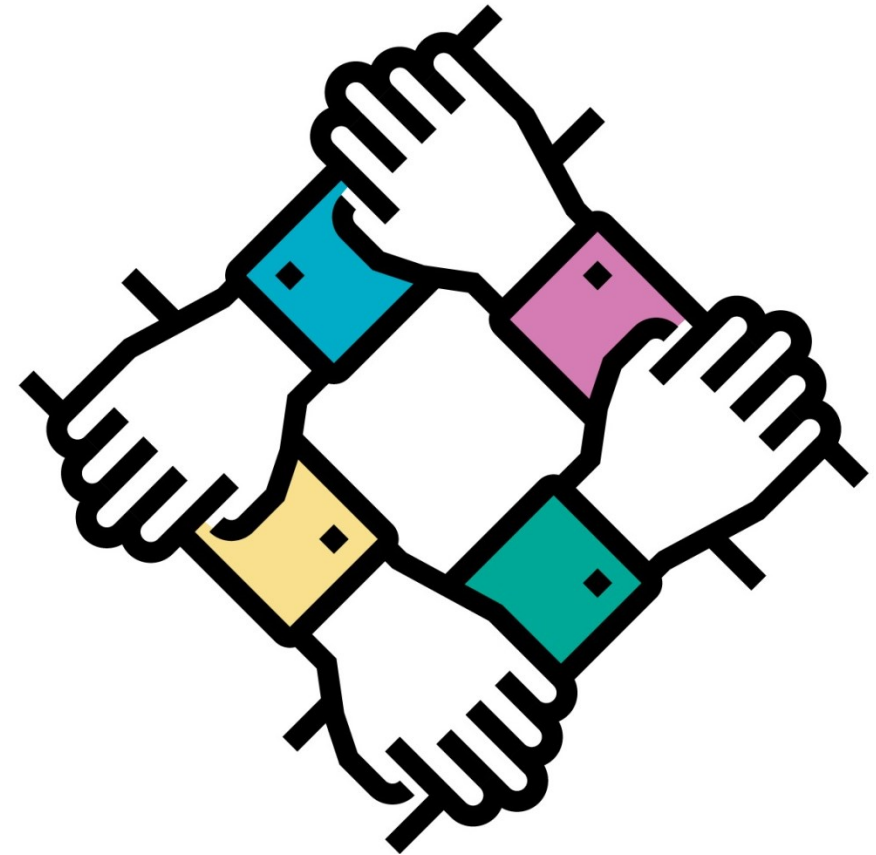
# Change Stories: The Social Framework in Action

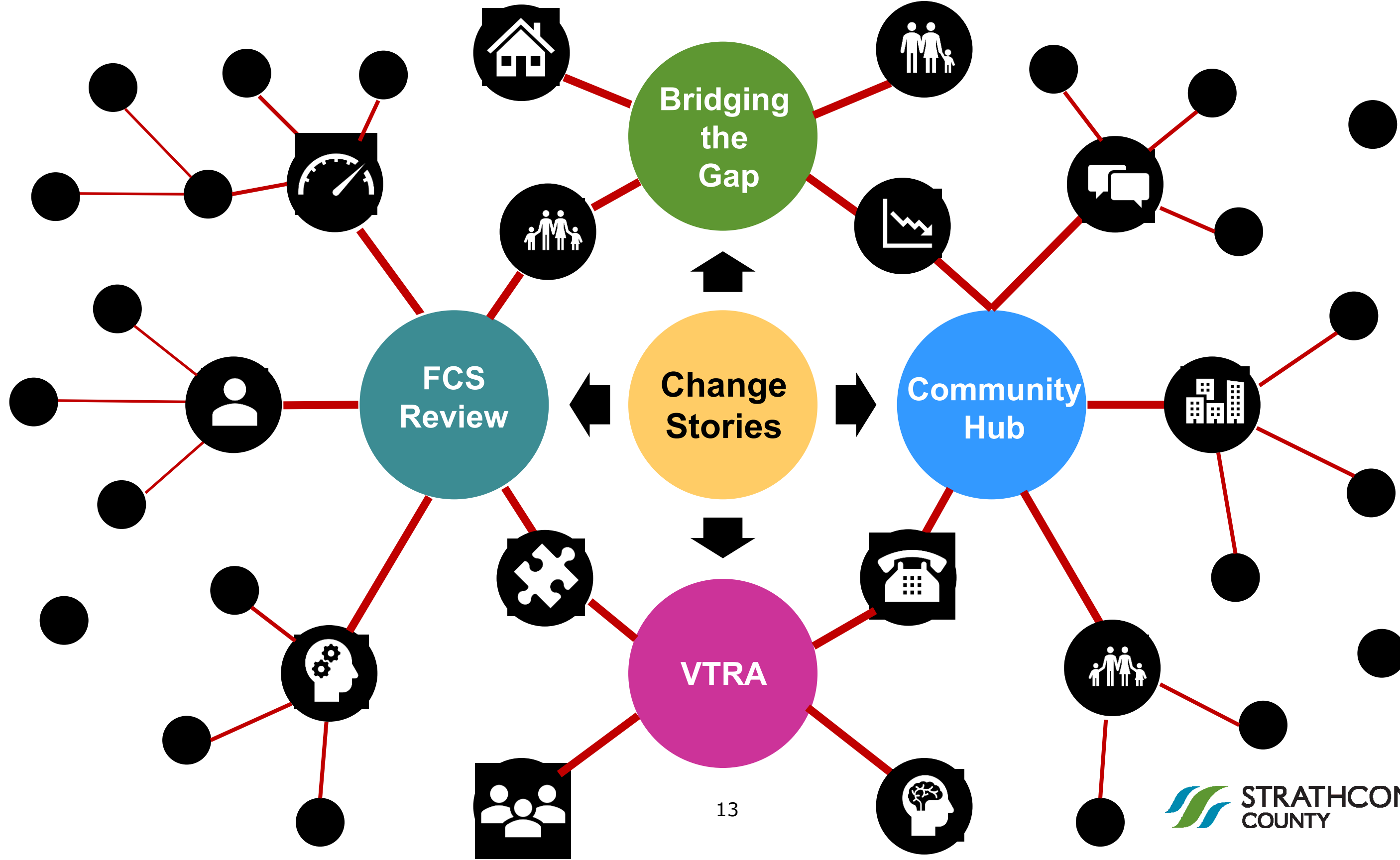


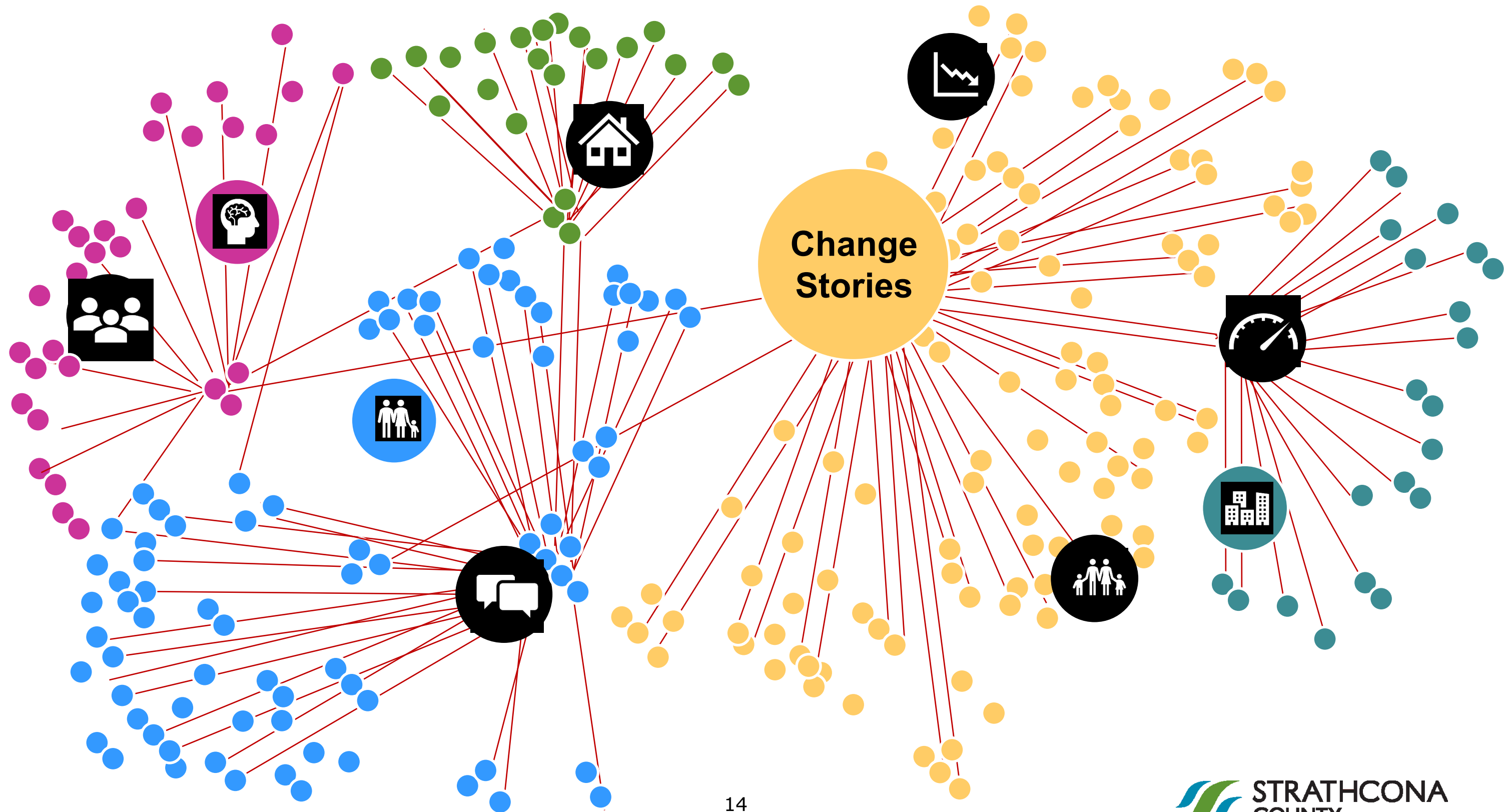
**Looking Inward**  
**Increasing Access  
to Programs and  
Services**

# Change Stories: The Social Framework in Action

**Violence Threat**  
**Risk Assessment**  
**Increasing Safety**







# Social Framework Platform

## PLATFORM



Backbone Support



Networks for Participation



Strategic Learning Cycles



# Think Like A Movement: Backbone For Change

## **Backbone Support Includes:**

- Guide visioning and strategy
- Support aligned activities
- Establish shared measurement
- Harness public will
- Facilitate supportive policies



**Backbone Support**

# Networks for Participation

## I'm In!

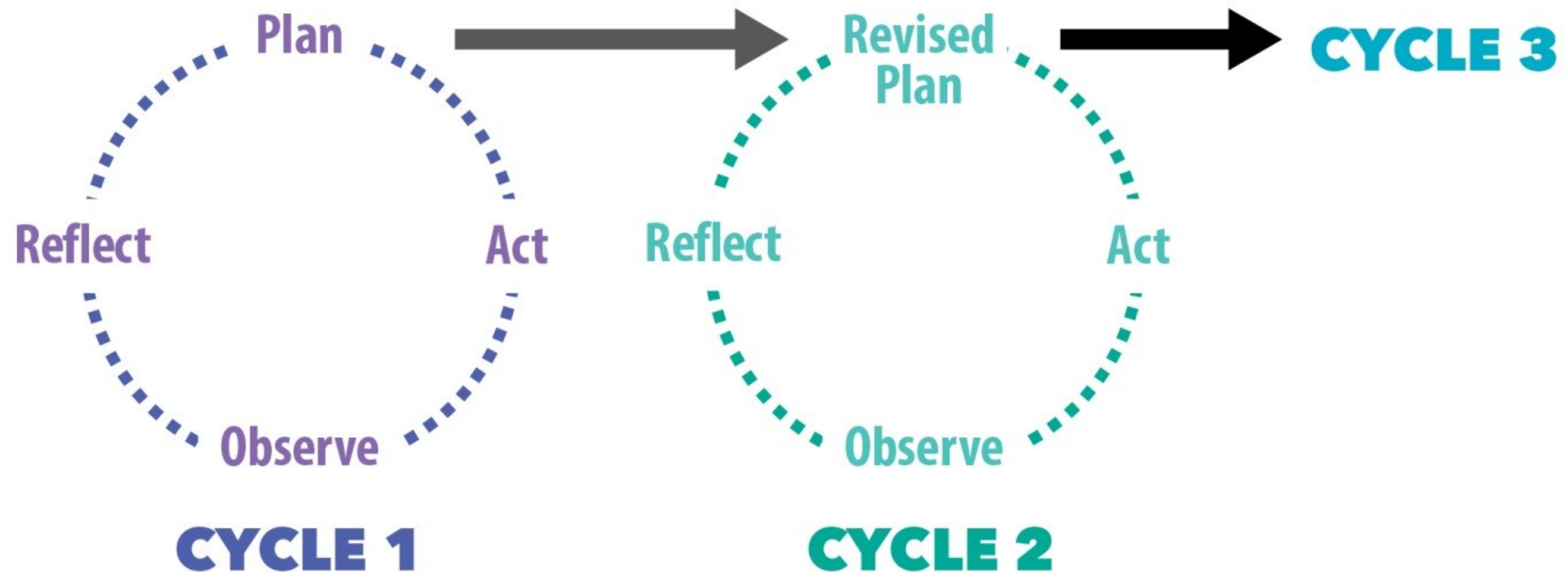


**Networks for  
Participation**

**Networks for Participation** will serve as the entry point for community members:

- Building Connections
- Aligning Community Efforts
- Production of New Initiatives

# Strategic Learning Cycles



# Role of Family and Community Services

- Create the Platform for Change
  - Becoming the Backbone Support
  - Develop Networks for Participation
  - Initiate strategic learning cycles
- Develop an Evaluation Framework

# Looking Forward

## Next Steps

- Public Launch
- Steering Committee collaboration- putting the Framework into action
- Initiate Platform

# Video

# The ask...

- Approval of the Framework
- Approval of Family and Community Services role to provide backbone support
- Approval to return to share learnings with a new adaptive version of this framework