

# **Train Whistle Cessation**

**Council Meeting  
September 5, 2017**

Transportation Planning and Engineering

# Background

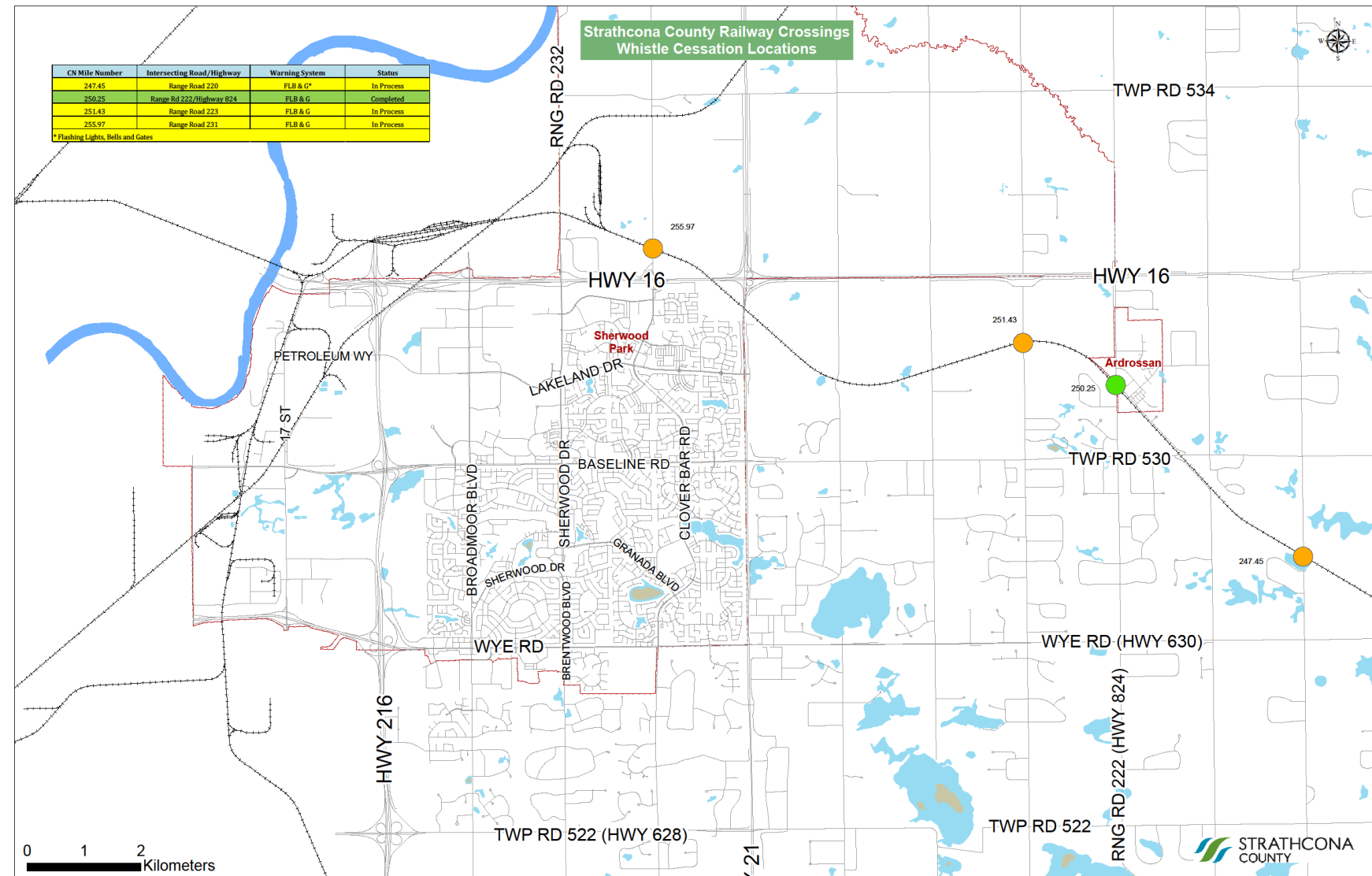
- Ardrossan railway crossing implemented in January 2016
- Soon after, there was an increase in resident complaints and awareness
  - Train noise
  - Increase in train traffic
  - Impact on quality of life
- Train Whistle Cessation Policy – provides guidance
- Three priority locations for whistle cessation were identified

# Priority Locations

**Range Road 231 at CN MILE 255.97**

**Range Road 223 at CN MILE 251.43**

**Range Road 220 at CN MILE 247.75**



# Whistle Cessation Process

- Interest from residents and/or Council
- Municipality contacts rail company
- Municipality issues notifications to relevant stakeholders
- **Municipality assesses the crossing (current stage)**
- Municipality and railway company agree that the crossing meets requirements
- Final decision from Transport Canada
- Council passes a resolution to have whistle cessation
- Railway companies implement whistle cessation within 30 days
- Railway/Municipality share the responsibility for monitoring/maintaining

# Safety Review and Deficiencies

- CN MILE 255.97 at Range Road 231
  - General Information
    - Number of tracks – 2
    - Equipped with Flashing lights, bells and gates
    - 2,500 vehicles per day
    - 35 trains per day
    - 6,500 households in the benefitting area (3 km radius)
    - Two collisions last 5 years (train was not involved)
    - No trespassing history
    - Design vehicle – WB-20
  - Safety Deficiencies
    - Insufficient gate arm clearance time (7 sec) for the design vehicle
  - Upgrades
    - Extend gate arm clearance time to 12 sec
    - Install 'NO TRAIN WHISTLE' tabs
  - Cost Estimate = \$20,0000

# Safety Review and Deficiencies

- CN MILE 251.43 at Range Road 223
  - General Information
    - Number of tracks – 1
    - Equipped with Flashing lights, bells and gates
    - 500 vehicles per day
    - 35 trains per day
    - 650 households in the benefitting area (3 km radius)
    - No collision history in 5 years
    - No trespassing history
    - Design vehicle – WB-20
  - Safety Deficiencies
    - Insufficient gate arm clearance time (10.8 sec) for the design vehicle
    - Sightlines are not clear for stopped vehicles
  - Upgrades
    - Extend gate arm clearance time to 12 sec
    - Trim vegetation to improve visibility
    - Install 'NO TRAIN WHISTLE' tabs
  - Cost Estimate = \$5,500

# Safety Review and Deficiencies

- CN MILE 247.45 at Range Road 220
  - General Information
    - Number of tracks – 2
    - Equipped with Flashing lights, bells and gates
    - 660 vehicles per day
    - 35 trains per day
    - 385 households in the benefitting area (3 km radius)
    - One collision in 5 years (train was not involved)
    - No trespassing history
    - Design vehicle – WB-20
  - Safety Deficiencies
    - Insufficient gate arm clearance time (10.5 sec) for the design vehicle
  - Upgrades
    - Extend gate arm clearance time to 14 sec
    - Install 'NO TRAIN WHISTLE' tabs
  - Cost Estimate = \$21,000



# Next Steps

- Consider pursuing whistle cessation
- Project and budget creation within capital budget approval
- Inform the public
- County approach CN rail to proceed with upgrades
- Final inspection
  - By CN Rail, Transport Canada and Strathcona County
- Council resolution to implement whistle cessation
- CN to implement the cessation within 30 days

# QUESTIONS?