

Social Framework

Supported, Safe and Connected Community

im



Update January 30, 2018

Our Community



- 7.4% County residents identify as visible minorities (23.5 % in Alberta)
- 4.0% of County residents are of Aboriginal identity (6.5% in Alberta)
- The County senior population has increased by 35% (23% in Alberta) from the 2011 to the 2016 Federal Census
- County Food Bank visits increased by 90% from 2014 to 2016

Our Community



- Median household income in the County is \$140,039 compared to \$109,997 for Alberta
- Alberta has the highest provincial average of household debt – \$124,838 (\$48,698 above national average of \$76,140)
- 3,922 Strathcona County households are living in poverty
- 1 in 3 seniors live on less than \$40,000/year based on a 2012 municipal census question (2,788 of 8,554 seniors answered)

Our Community



- In 2017, the average median price of homes sold in Sherwood Park was \$431,509 (\$404,900 in Edmonton)
- In October 2017, the average mean price of homes sold in Sherwood Park was \$457,378 (\$395,429 in Alberta)
- 2,027 households in Strathcona County are living in Core Housing Need
- 5.5% increase in waitlists for all types of accommodation at Heartland Housing Foundation from January 2016 to January 2017

Our Community



ADDICTIONS & FAMILY VIOLENCE

- 166% increase in the number of emergency department visits by Strathcona County residents for opioid use from 2013 to 2016
- Over the last 5 years, 3 out of 4 individuals visiting the emergency department for opioid use were between ages of 15 to 34
- From 2010 to 2016, RCMP reported cases of domestic violence have increased by 113% (from 414 cases to 884 cases)

Our Community



- 2016 employment rate in Strathcona County is 67.4% (65.4% in Alberta in 2016)
- 2016 unemployment rate is 6.5% (9.0% in Alberta in 2016 and 7.9% in Alberta in 2017)
- In 2016, nearly 1 in 3 Strathcona County Food Bank users (34%) were employed

Our Community



- Anxiety is one of the top reasons for doctor referrals to the Primary Care Network and over the past 3 years a 57% increase in the number of cases reported by the PCN

Foundation for Collaboration



ENVIRONMENT

Economic & Social factors impacted from downturn



ENGAGEMENT

Listening to change as resiliency and hope emerged

Community Outcomes



CONNECTEDNESS & INCLUSION

Foster a sense of
belonging and acceptance.

Foundation for Collaboration



ENVIRONMENT

Economic & Social factors impacted from downturn



ENGAGEMENT

Listening to change as resiliency and hope emerged



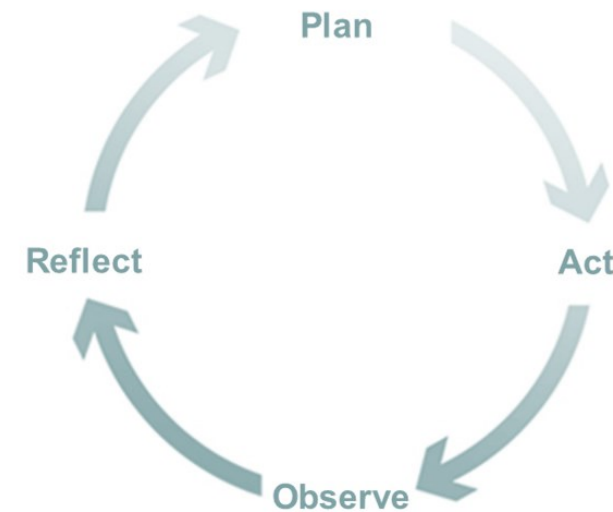
COMMUNITY

A shared vision created **by** the community **for** the community

Shift the Way We Think and Do



Learning By Doing



Building Momentum



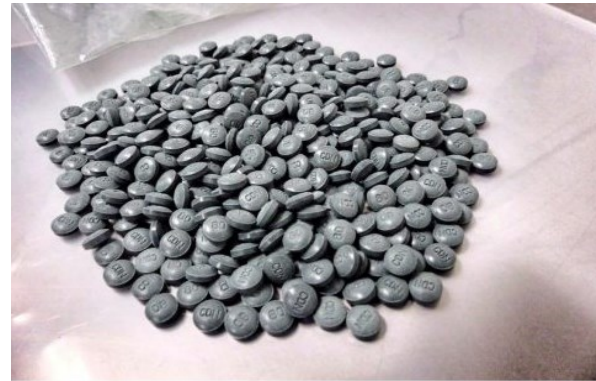
Supporting a Community

Bridging the
Gap

Housing



Violent
Threat
Risk
Assessment



Opioid
Crisis
Community
Response

Walk In
Counselling
& Supports

Looking to the Future



**Social Services
Grants Policy**



Over 18



**Community Hub/
Seniors Centre**



**Investigating
Belonging**

THANK
YOU

For being an important part of our community connections