

Smart Cities Challenge

Priorities Committee Meeting

Feb 13, 2018

What is a “Smart City?”

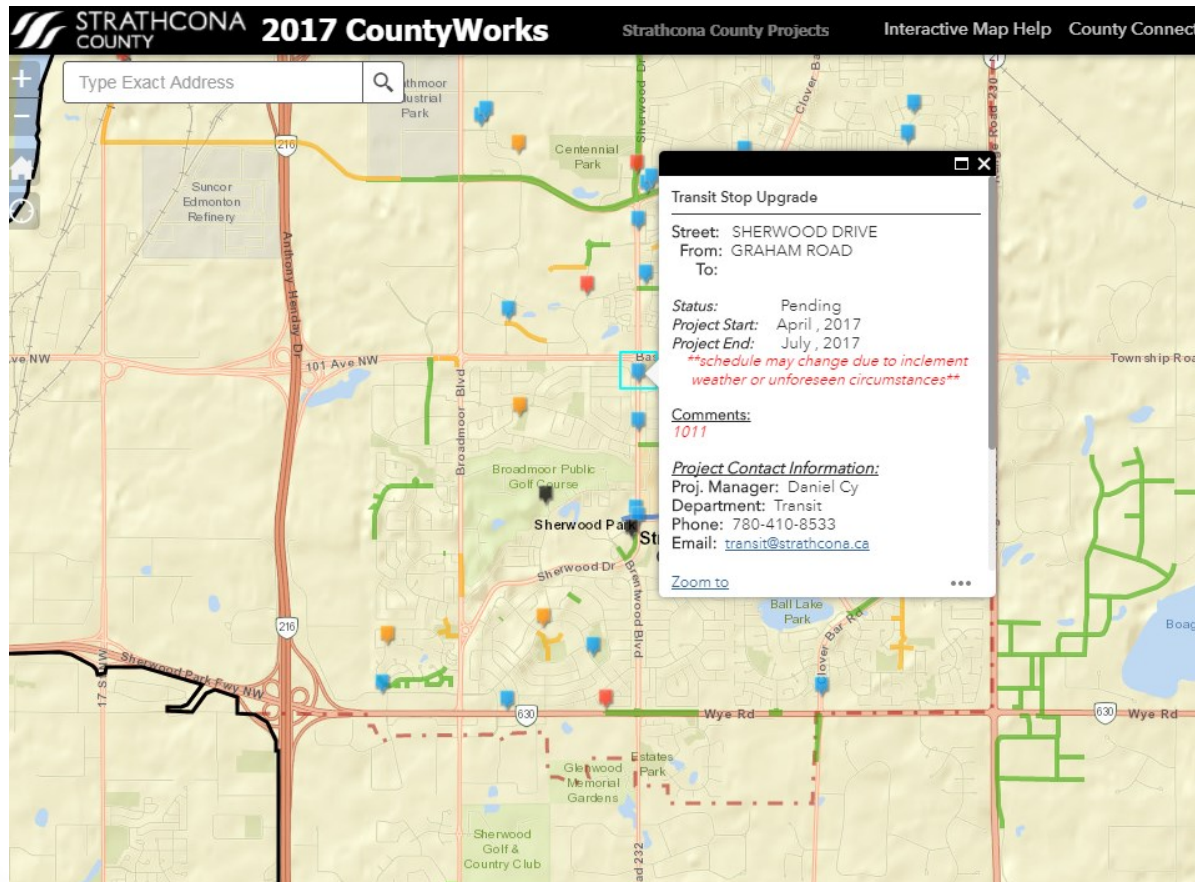
An approach to improve the lives of the community through innovation, data and connected technology.

[Click this for a 101 second introduction video](#)

Strathcona is “Smart”

- Open Data
- Open WI-FI
- Online Public Engagement
- Connected Building Management
- Community Energy
- AVL/GPS Enabled Vehicles
- Mobile Workforce Systems
- Water Usage Monitoring
- Priority Based Budgeting
- SmartBus/Fare
- Smart Water Meters
 - RFID Waste Carts
- Aquatic Safety Monitoring
- Traffic Control / Monitoring
- Emergency Vehicle Exemption
- Emergency Mobile Data Terminals
- Enforcement Services Video Capture
- Interactive Asset Management - ESRI

CountyWorks is the place to find the most up-to-date information on construction projects in and around Strathcona County.



The Property Assessment Mapping tool is an interactive, Geographic Information System (GIS) based tool. It allows you to access and review assessment information, compare properties and generate a Property Summary Report and Property Comparison Report.

STRATHCONA COUNTY

Property Assessment Tool

Tools

External Links

Home
 Full extent
 Google Street View
 Print

Select a property
 Select multiple properties
 Address
 Roll number
 LINC number
 Plan/Block/Lot
 Alberta Township System
 Clear selections

Property summary
 Property comparison

Basic Tools

Search Tools

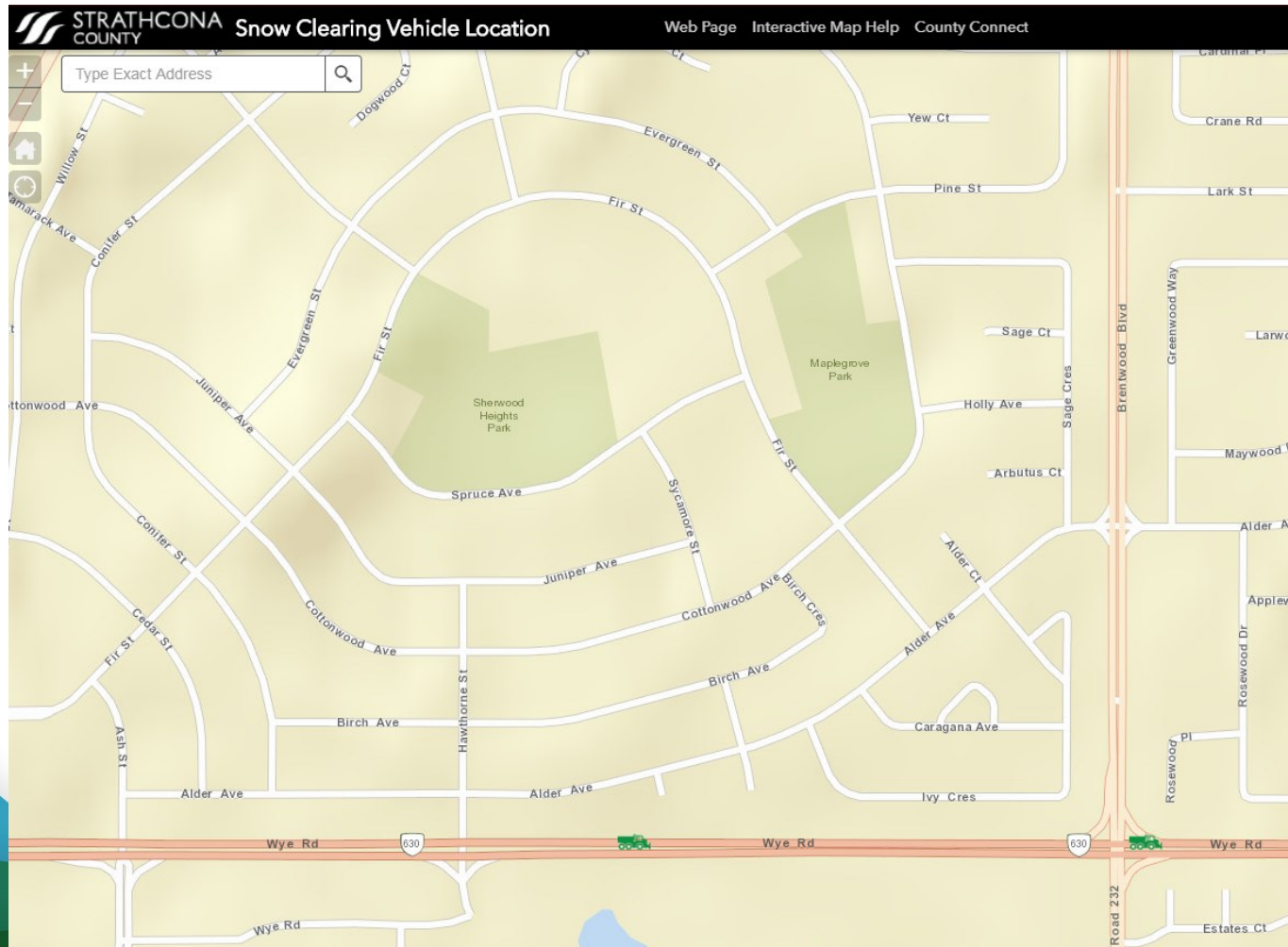
Reports

Parcel Selection (1)

Parcels

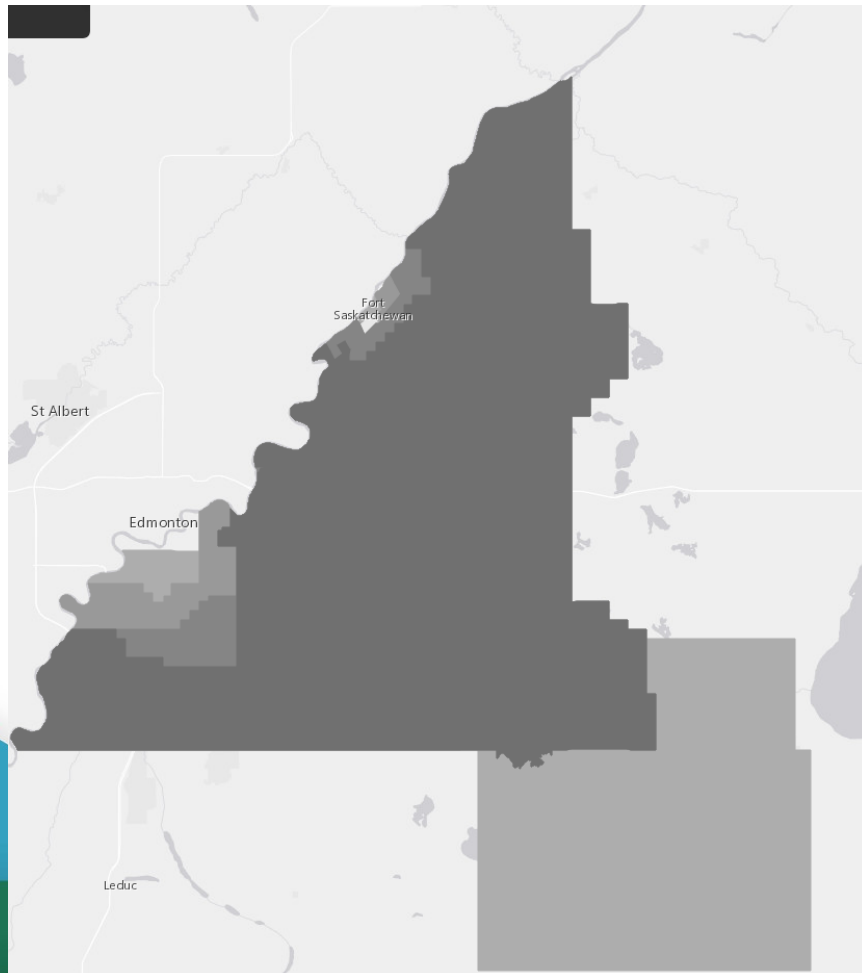
Roll Number	Address	Alberta Township System	Legal Description	Building Description	Living Space (sq ft)	Living Space (m)	Year Built	Parcel Area	Measured In	Current Assessment
7139012004	14 GLENBROOK BLVD	0-0-0	5558RS 139 12	Split Entry	1025	95	1971	658	Sq M	336000

This interactive map shows the locations of Strathcona County owned and operated snow clearing equipment. It does not show the location of snow clearing equipment owned and operated by contracted companies.



From time to time ...

A historical look at Strathcona County utilizing a GIS Story Map.



Strathcona County



From time to time ...

Changing boundaries

As the municipality changed over the years, so did its boundaries. In the first half of the 20th century, the boundary changes were largely due to:

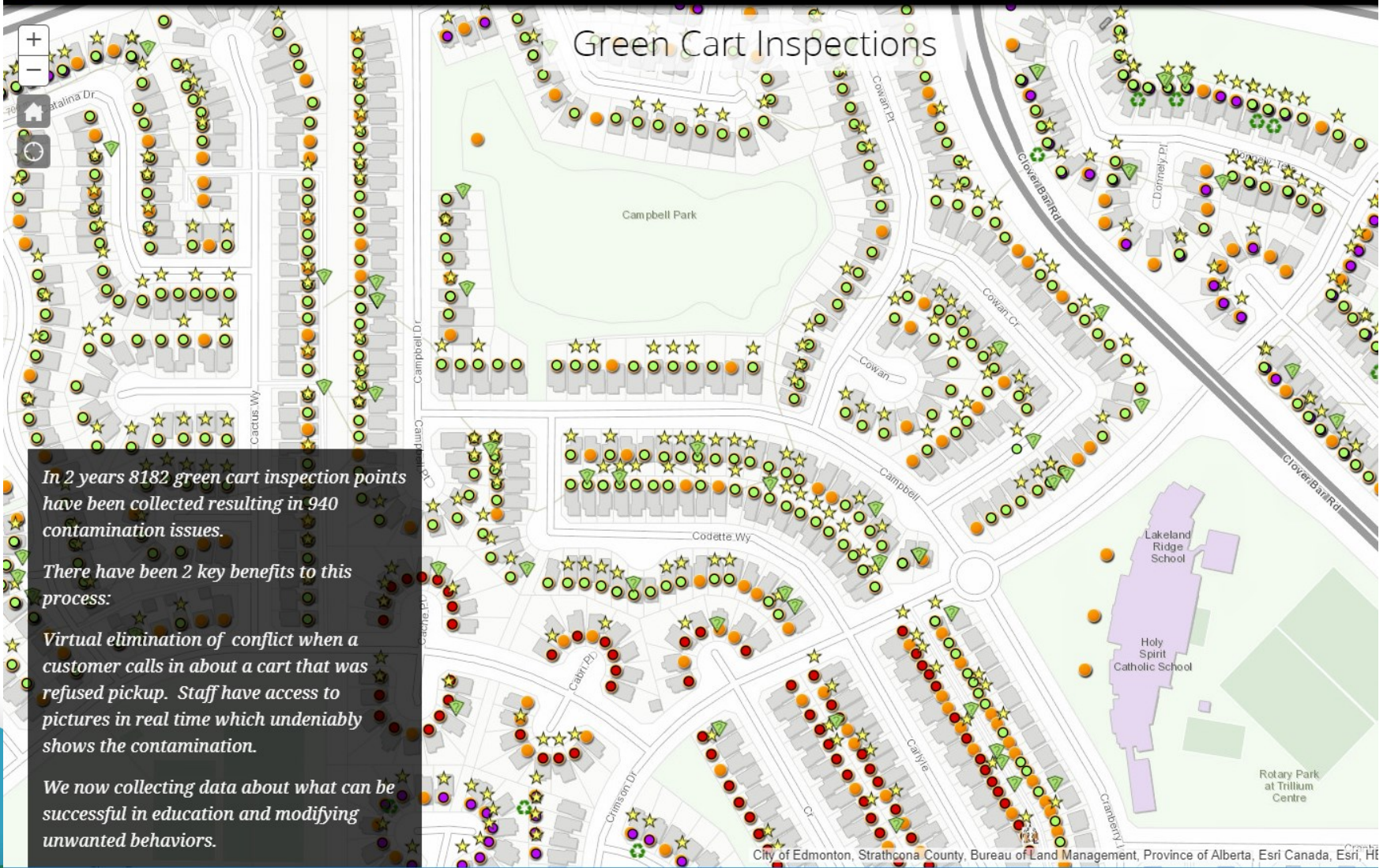
- adjustments made by the Province of Alberta to municipal boundaries in response to expanding settlement and governance reforms
- annexations by neighbouring municipalities that dramatically changed Strathcona's west and north boundaries

1893 On April 14, 1893, the area of Clover Bar - Township 53, Range 22, West 4th Meridian - was declared by the North-West Territorial Legislature as Statute Labor and Fire District Number Two.

1918 Local Improvement District of Strathcona No. 518 became Municipal District of Strathcona No. 518, and Local Improvement District No. 517 was renamed the Municipal District of Clover Bar No. 517. Local Improvement District of Cornhill No. 487 became the Municipal District of Cornhill No. 487.



Councillors, MD Strathcona, c. 1920
image: Strathcona County Museum & Archives



Current out of Service Hydrants

16

Closed

Infographic_3

Temporarily
Closed Valves

Temporarily Open
Valves

8

No data

Infographic_6

Inoperable Valves

61

Infographic_4

Breaks / Leaks

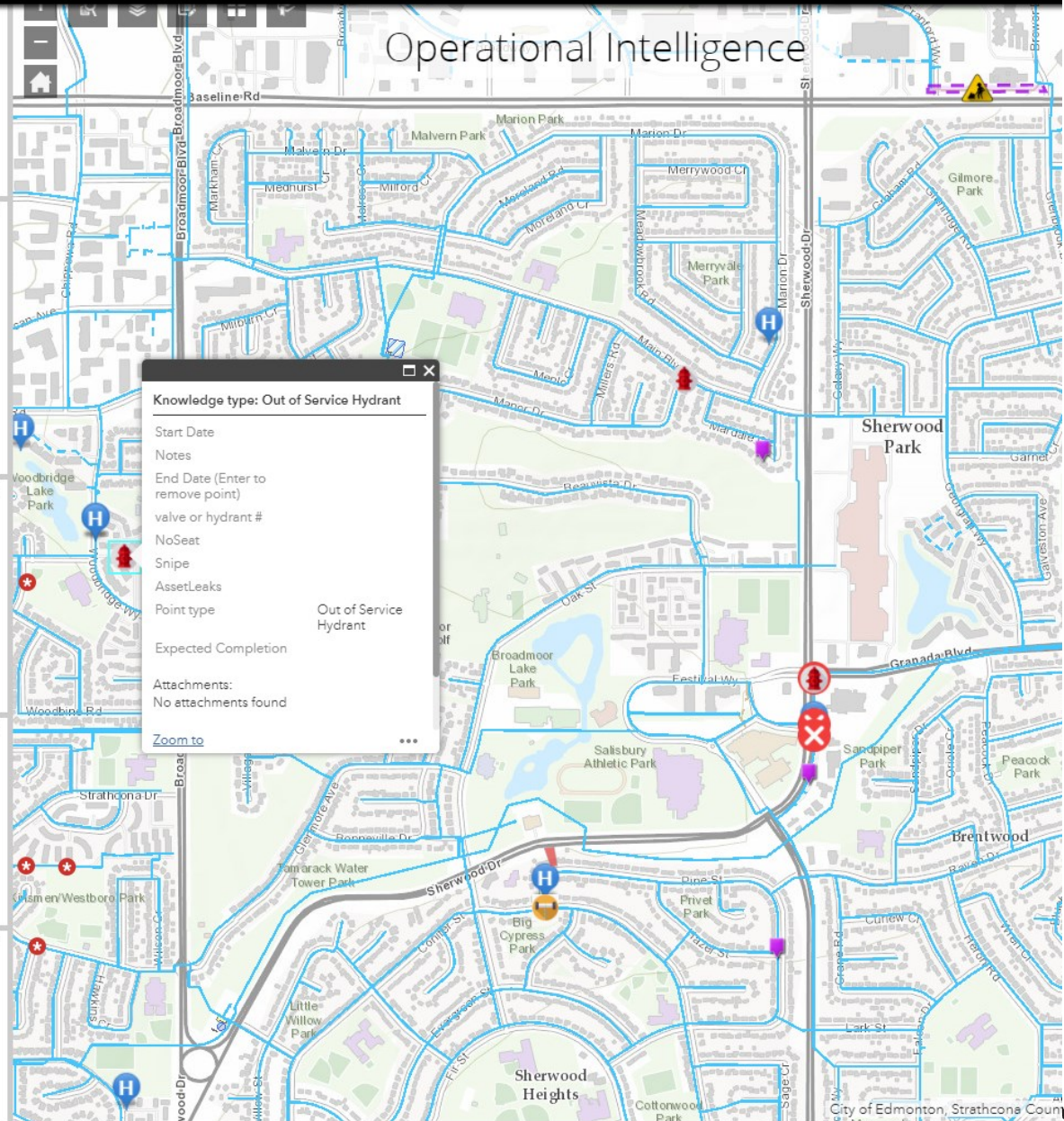
2

Surveys

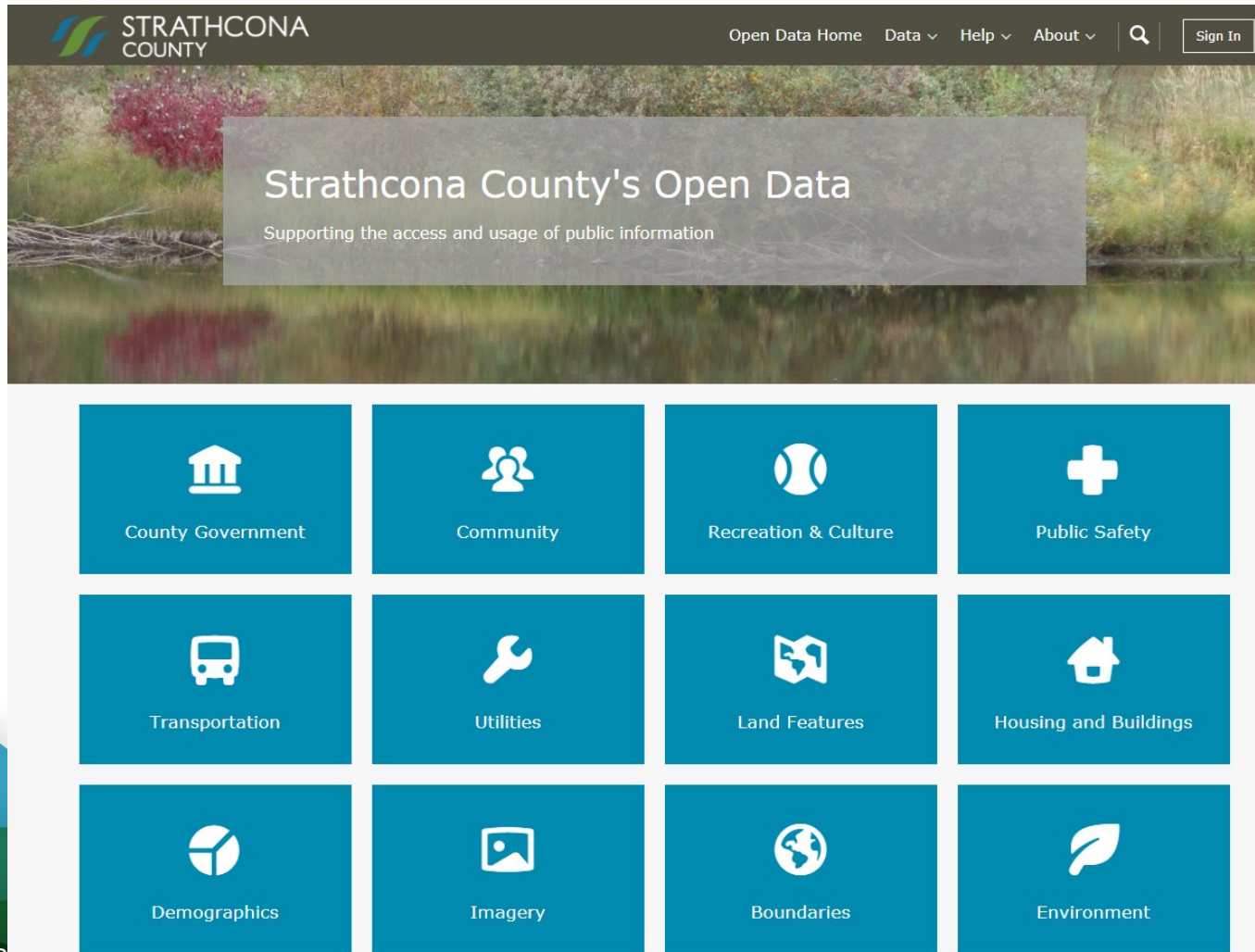
Urgent/High Priority Survey Requests

23

Operational Intelligence



Open Data Strathcona



2/5/2018

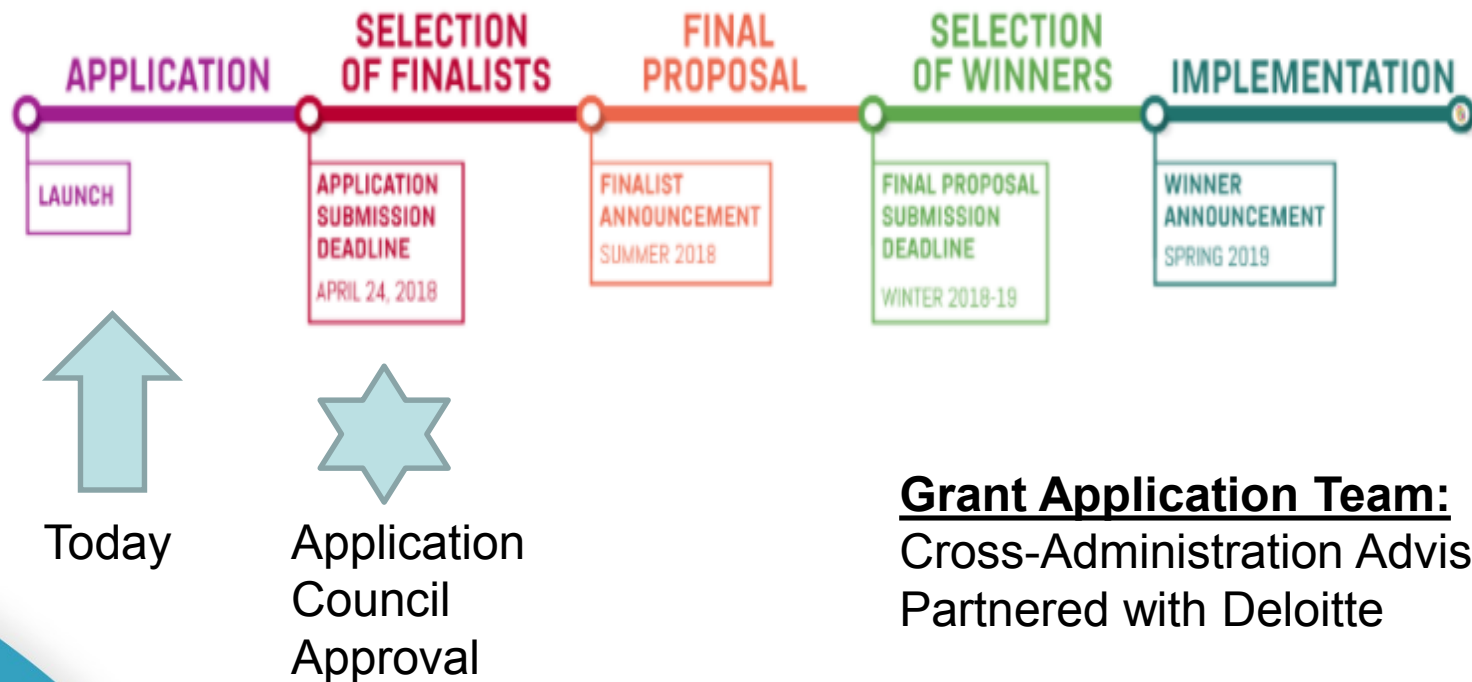
Our Smart Challenge Theme



An aspirational challenge that is relatable across communities to support
INCLUSION and CONNECTEDNESS so that
“Citizens are connected to one another and their individual differences are
valued and respected.”

Challenge Timelines

Timeline of Smart Cities Challenge Process



Grant Application Team:
Cross-Administration Advisors
Partnered with Deloitte