

Class I Rural Grid Road Upgrade Project – Design, Land, Utilities, and Construction (Township Road 522)

Capital Budget Amendment

Council Meeting

March 27, 2018

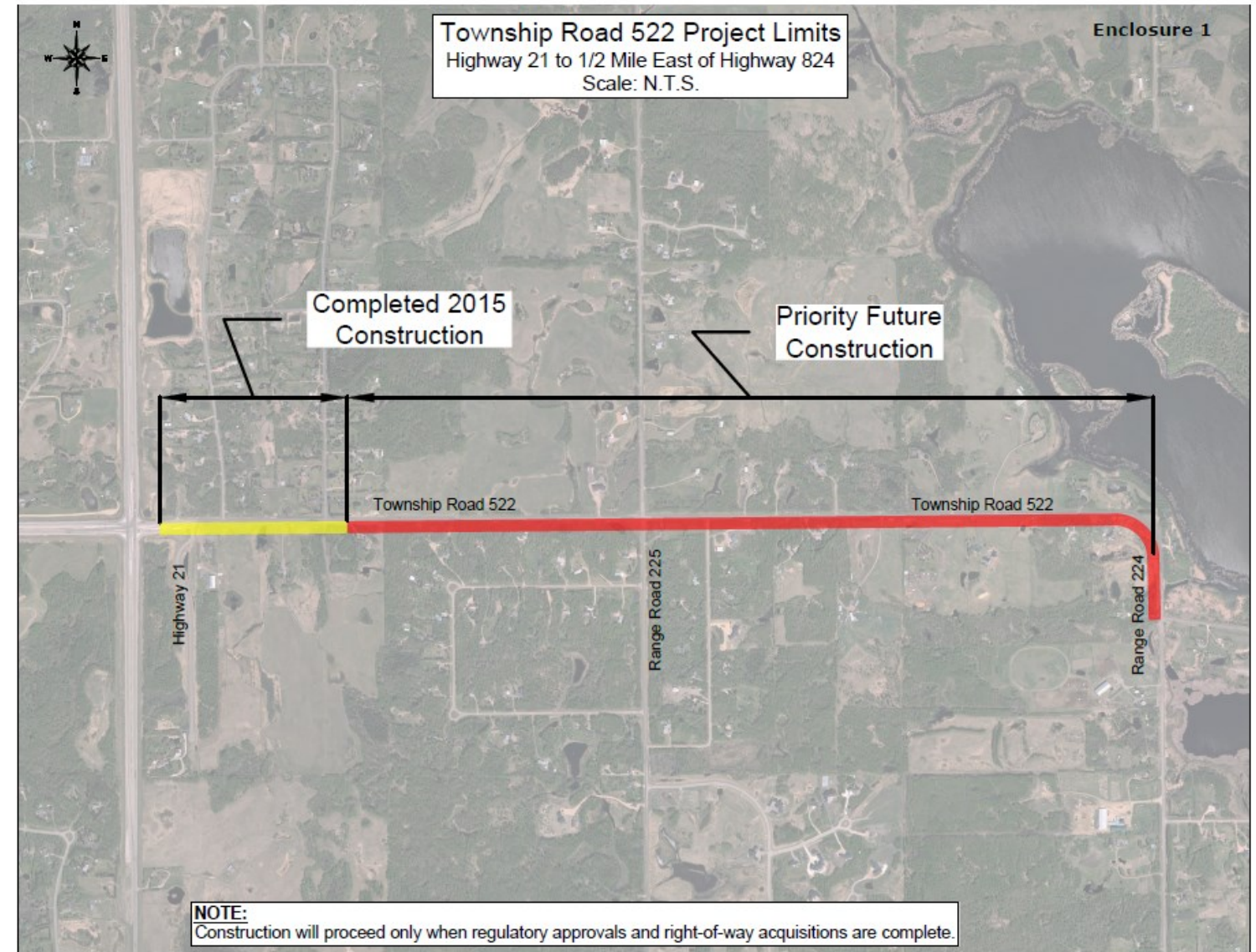
Transportation Planning and Engineering

Township Road 522 Project Limits

Twp Rd 522 is a direct extension of Whitemud/Highway 628, as the roadway continues east of Highway 21.

Stage 1 project limits:
Highway 21 to 800m east,
completed construction in 2015.

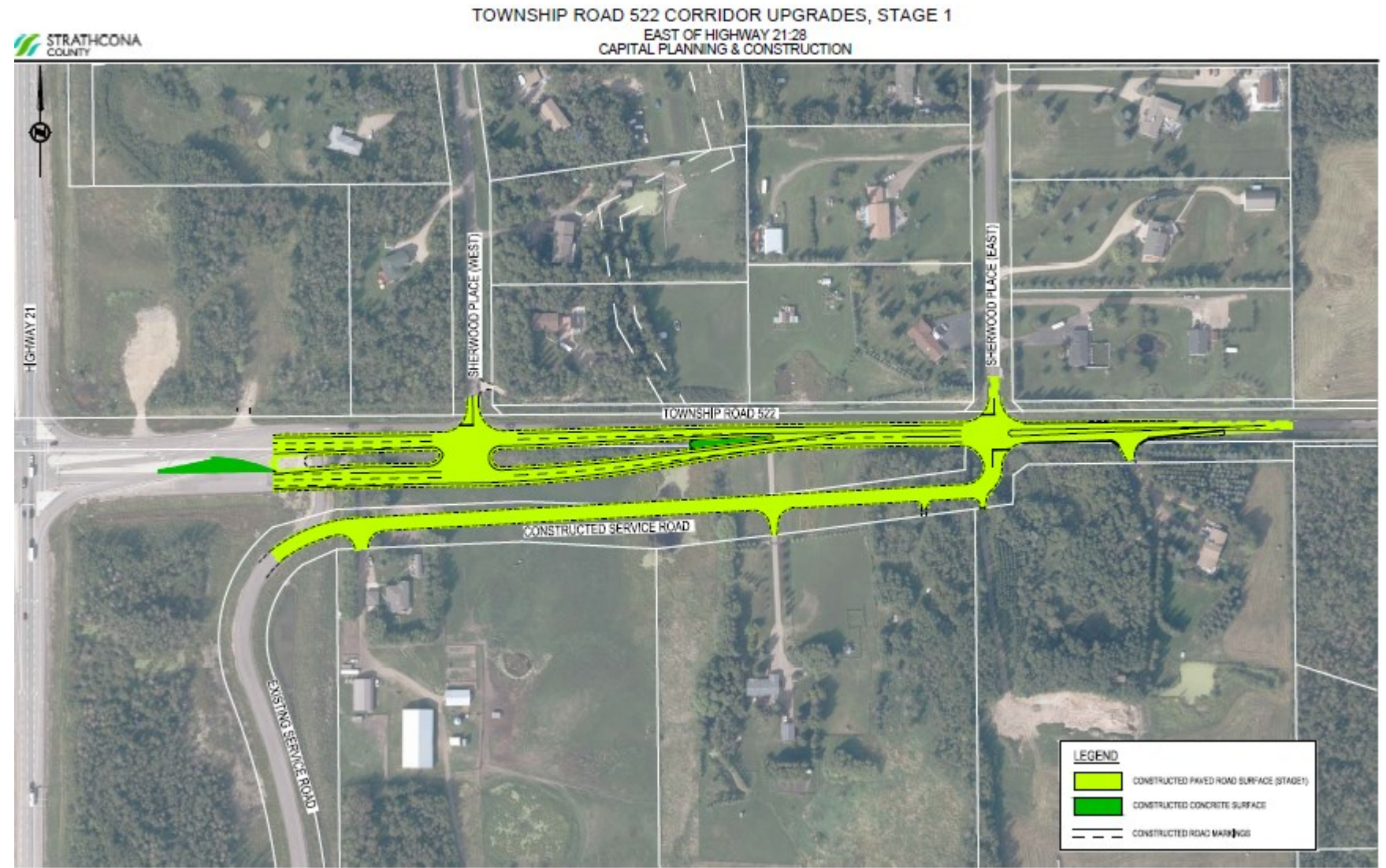
Stage 2 project limits:
From east of Stage 1 to Range
Road 224



Stage 1: Highway 21 to 800m East

Stage 1 was completed 2015, based on Alberta Transportation design, with construction led and procured by Strathcona County.

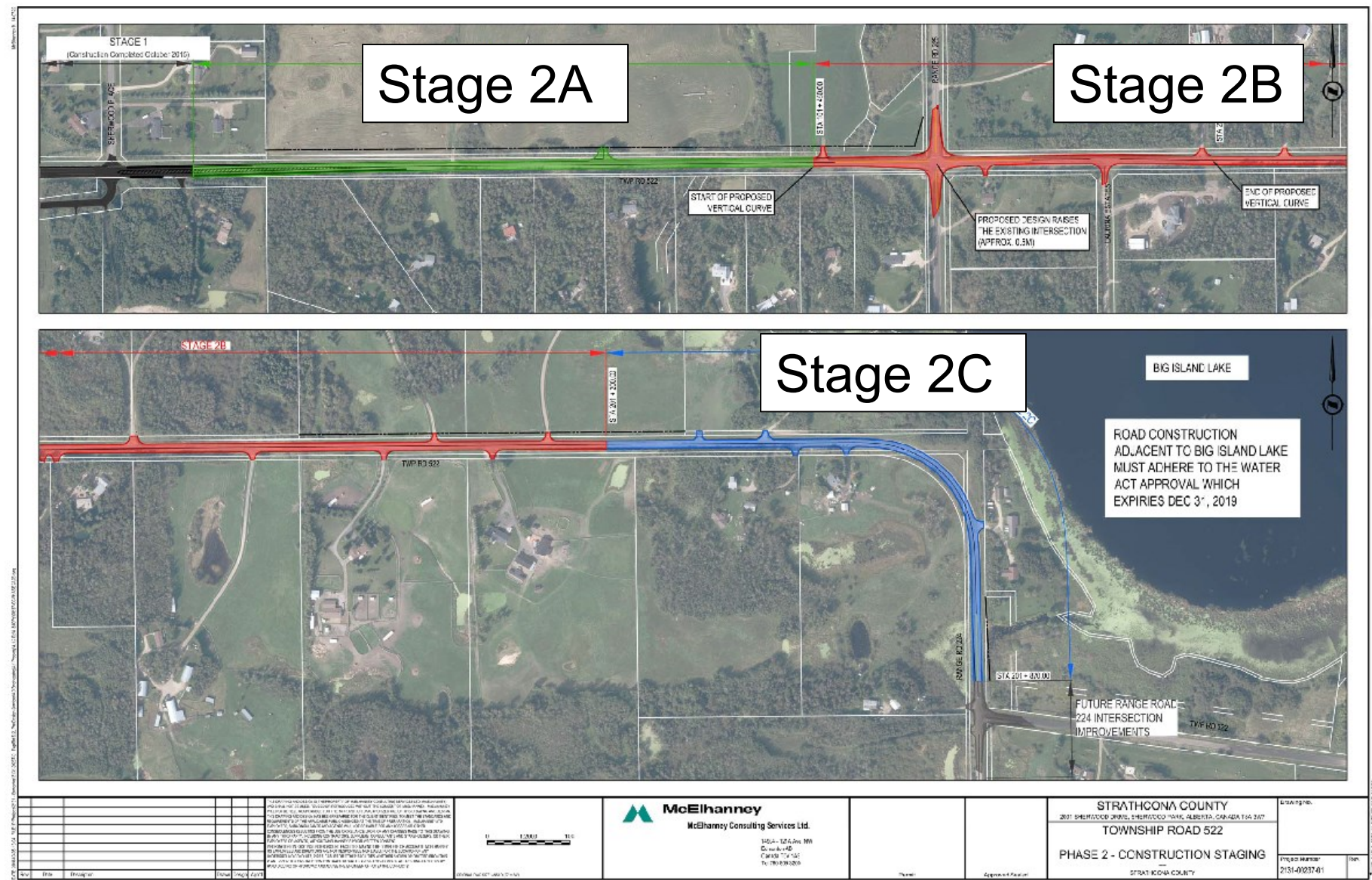
Alberta Transportation's contributed funds were reconciled into the project budget in CBA#1.



Stage 1 Completed Roadway



Stage 2 – Construction Staging



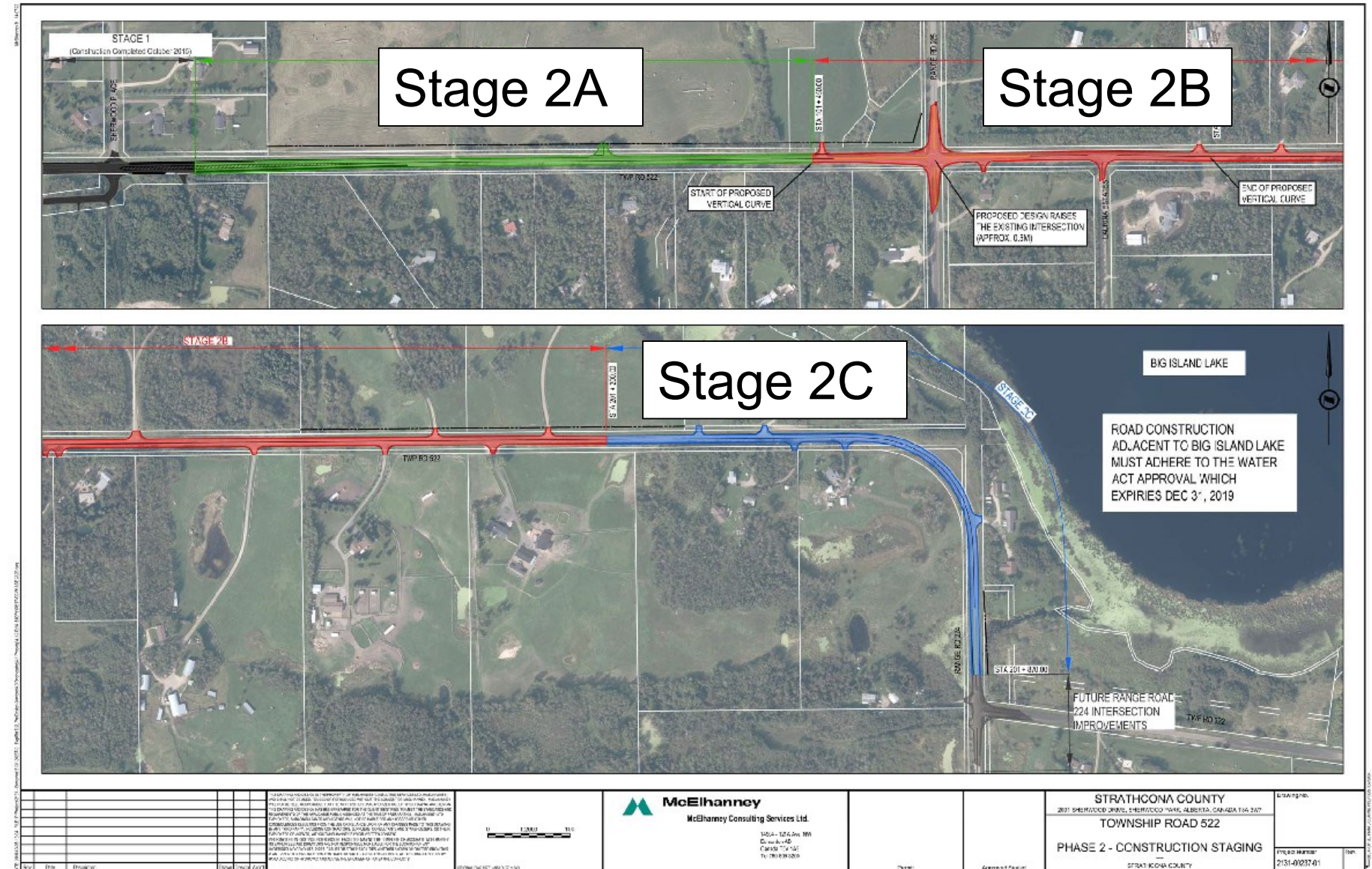
Option 1 – Recommended Option

2018 (Current Business Case):

- Construct Stage 2C
- Complete land and complete 'shelf ready drawings' for Stage 2B
- Decrease in funds of (\$1.41M)

2019:

- Propose to construct Stage 2A and 2B under separate business case in 2019 Capital Budget



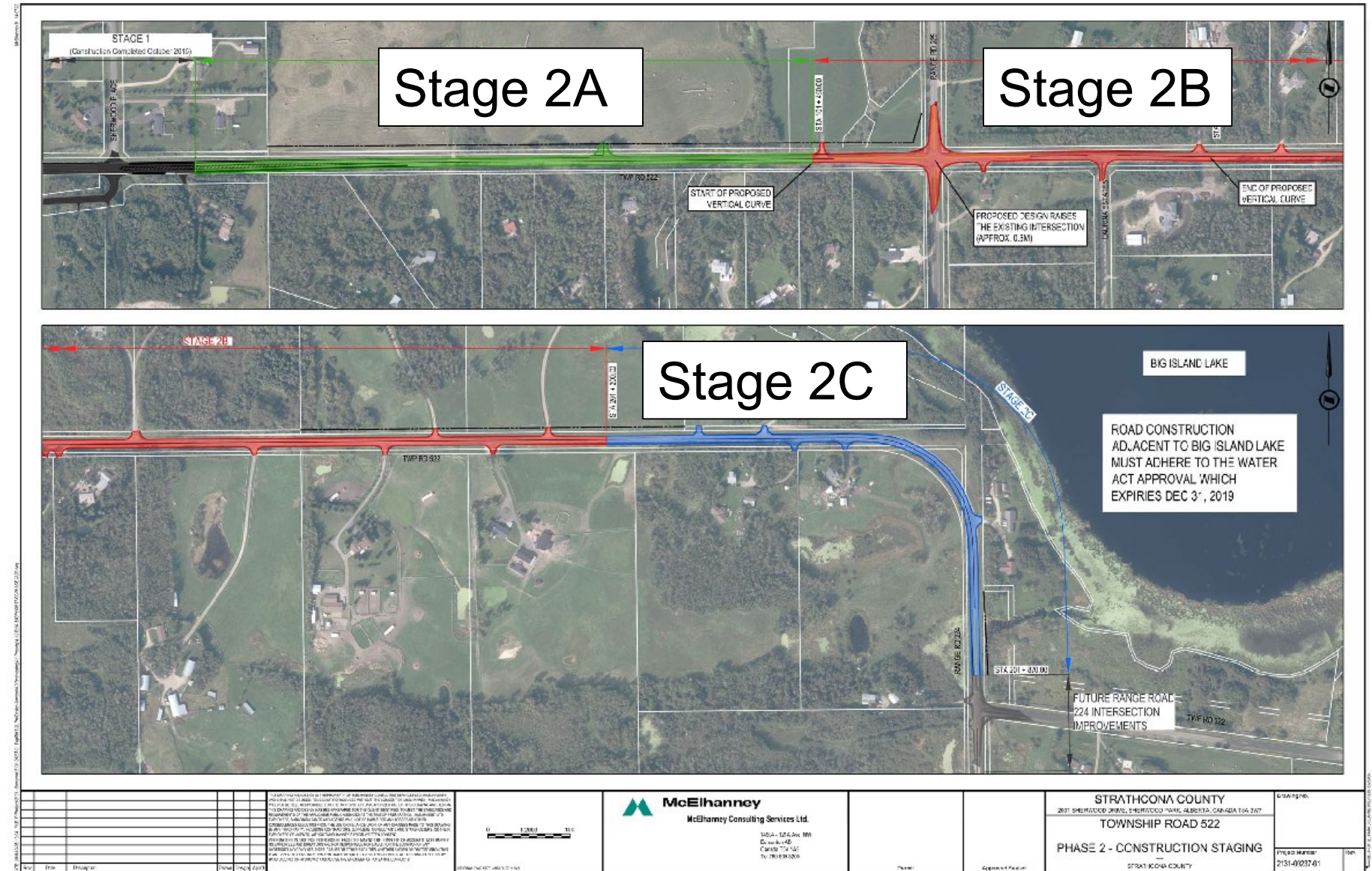
Option 2

2018 (Current Business Case):

- Tender construction of Stage 2A and 2C
- Complete land and complete 'shelf ready drawings' for Stage 2B
- Increase in funds of \$1.56M

2019:

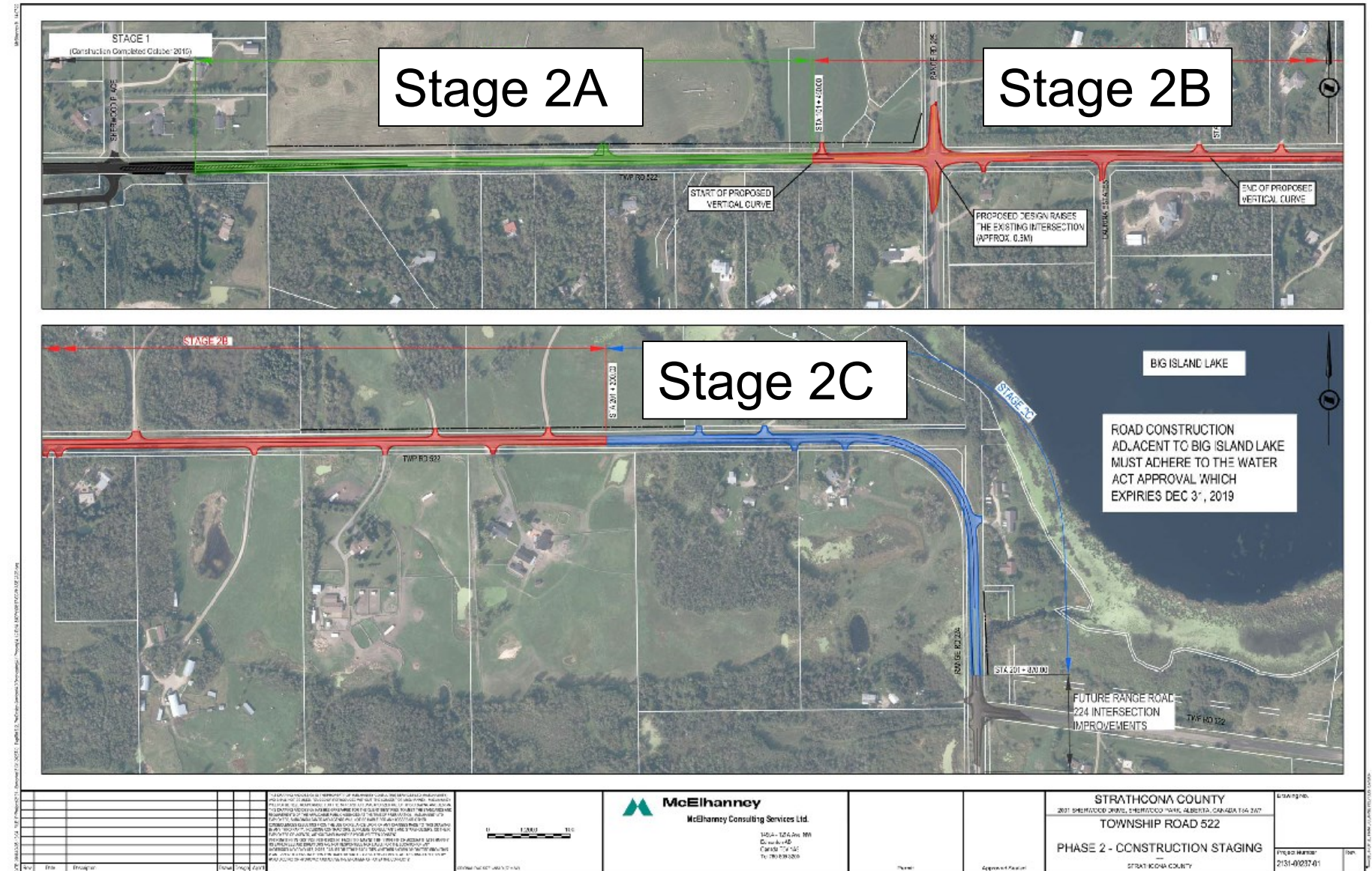
- Propose to construct Stage 2B under separate business case, in 2019 Capital Budget



Option 3

2018 (Current Business Case):

- Tender construction of Stage 2A and 2C
- Complete land and complete 'shelf ready drawings' for Stage 2B
- Obtain funding for future construction of Stage 2B, to be tendered when possible, likely in 2019
- Increase in funds of \$5.1M



Summary – Recommendation

- Addresses Stage 2C roadway concerns in 2018.
- Meets environmental permits timelines.
- Permits Stage 2A and 2B to be built together, reducing traffic impacts at Rge Rd 225.
- Allows for Stage 2A and 2B to be proposed in another business case in 2019 Capital Budget.

