

Councillor Request Inquiry

18-2019

2019

April 16, 2016 Information Request:

Please provide the approval documentation from Alberta Transportation for the Bremner Area Concept plan, such as the approvals for the transportation and road plan.

In response to Mayor Frank's April 16, 2019 Information Request noted above, please find attached the following:

- **September 28, 2018** letter from S. Fedechko to M. Pylko (AT) providing the requested confirmation to AT of the County's position with respect to interchange configurations as well as the County's request for AT to model this alternative scenario to ensure no significant impacts to the network capacity.
- **October 23, 2018** response from AT confirming AT has assessed the effects of the proposed configuration and no significant impacts are anticipated to the network capacity because of this crossing.

The October 23, 2018 response is the last formal correspondence received from AT regarding the Bremner Area project. AT was circulated the final draft of the Bremner ACP however no formal comments have been received to date.

As noted in the October 23, 2018 letter, AT appreciates collaborating with Strathcona County and looks forward to continued discussions. Should Council approve the Bremner ACP, there will be ongoing discussions with AT as Traffic Impact Assessments will need to be completed by the developers for each sub-regional ASP and reviewed and approved by AT at that time.

Sincerely,
Stacy L. Fedechko, RPP, MCIP
Director, Planning and Development Services

September 28th, 2018

Michal Pylko, Director
Highway and Roadside Planning
Transportation
3rd Floor Twin Atria Building
4999-98 Avenue
Edmonton, AB T6B 2X3

Dear Mr. Pylko:

Strathcona County would like to thank you again for meeting with us on August 23rd 2018 to discuss Alberta Transportation's results of the Highway 16 Access Management Modelling. We also appreciate your correspondence from September 14, 2018 confirming that the exact spacing and configuration of the preferred scenario should be further reviewed to optimize traffic operations.

Regarding your request for confirmation of the County's position, Strathcona County would like to move forward with a modified configuration of scenario 3 in the Bremner Area Concept Plan as shown on the attached figures. We believe that this configuration meets Alberta Transportation's spacing requirements and optimizes both internal and external traffic operations.

We would like to request that Alberta Transportation model this alternative scenario and confirm whether technical staff is willing to support this modified configuration of scenario 3. If a timeline for the completion of the modelling could be provided it would be appreciated. If Alberta Transportation feels that no additional modelling is required at this time, please let us know. We appreciate the ongoing collaboration and would like to thank you again for working with us.

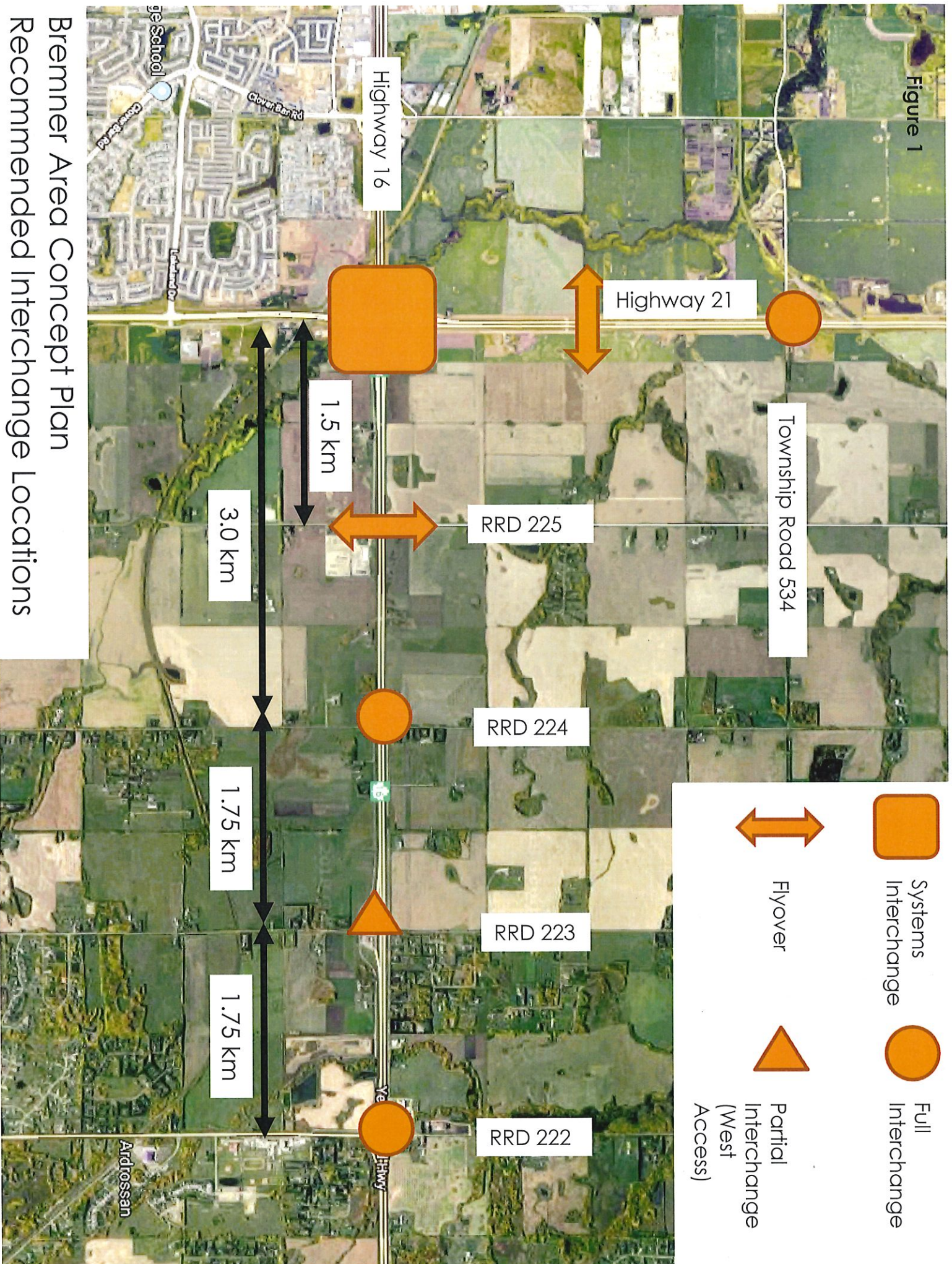
Sincerely,



Stacy Fedechko, RPP, MCIP
Director, Planning & Development Services



Figure 1



Bremner Area Concept Plan
Recommended Interchange Locations

Figure 2



October 23, 2018

Ms. Stacy Fedechko, Director
Planning & Development Services
Strathcona County
2001 Sherwood Drive
Sherwood Park, Alberta
T8A 3W7

Dear Ms. Fedechko:

Thank you for your letter dated September 28, 2018 confirming Strathcona County's position with the preferred scenario.

Alberta Transportation has assessed the effects of introducing the flyover at Range Road 225, which would connect to Lake Land Drive in future. No significant impacts are anticipated to the network capacity because of this crossing.

We look forward to continued discussions related to the preferred location of future Range Road 223 interchange in order to ensure it meets County's needs and functions appropriately with the adjacent interchanges.

We appreciate collaborating with Strathcona County to achieve a mutually beneficial project outcome.

Sincerely,



Michal Pylko, P. Eng.
Director, Highway and Roadside Planning

cc: Dean Litke, Infrastructure Manager, NC Region
Paul Buryn, Operations Manager, Stony Plain