



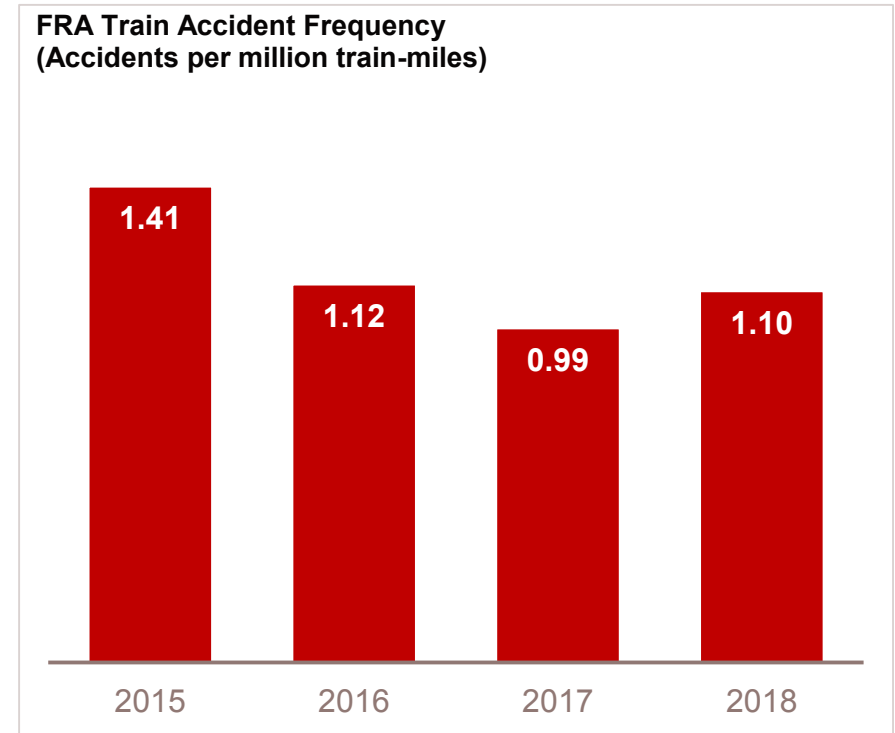
IN YOUR COMMUNITY

STRATHCONA COUNTY

MAY 2019



INDUSTRY LEADING SAFETY PERFORMANCE

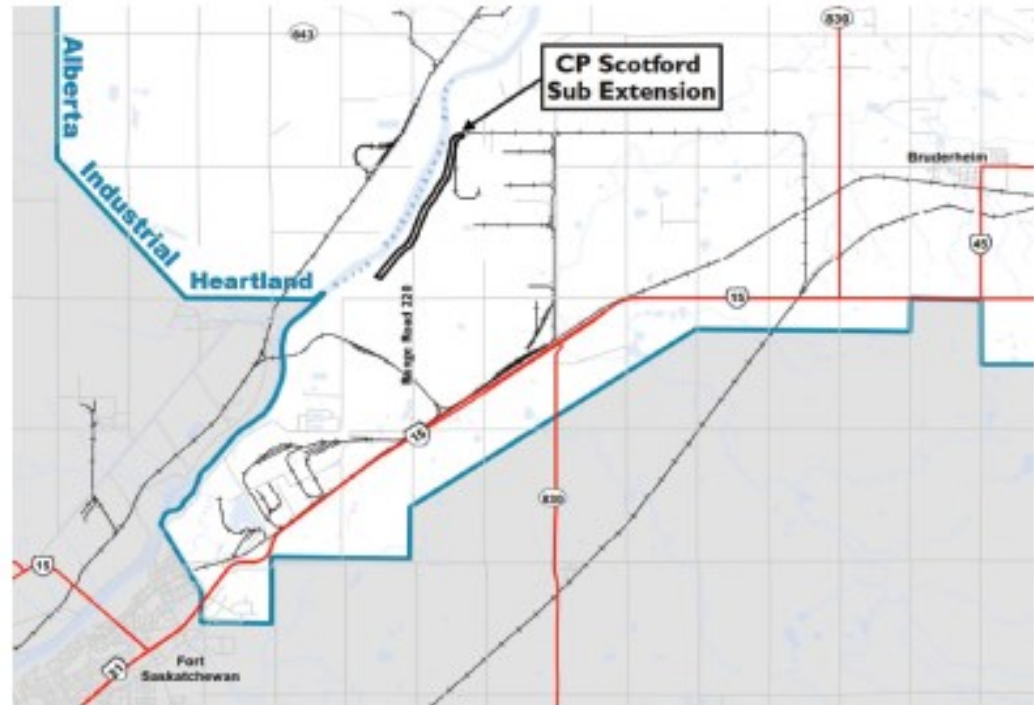


CP is the North American leader in safety performance for the past 13 years

SCOTFORD TRACK EXTENSION PROJECT

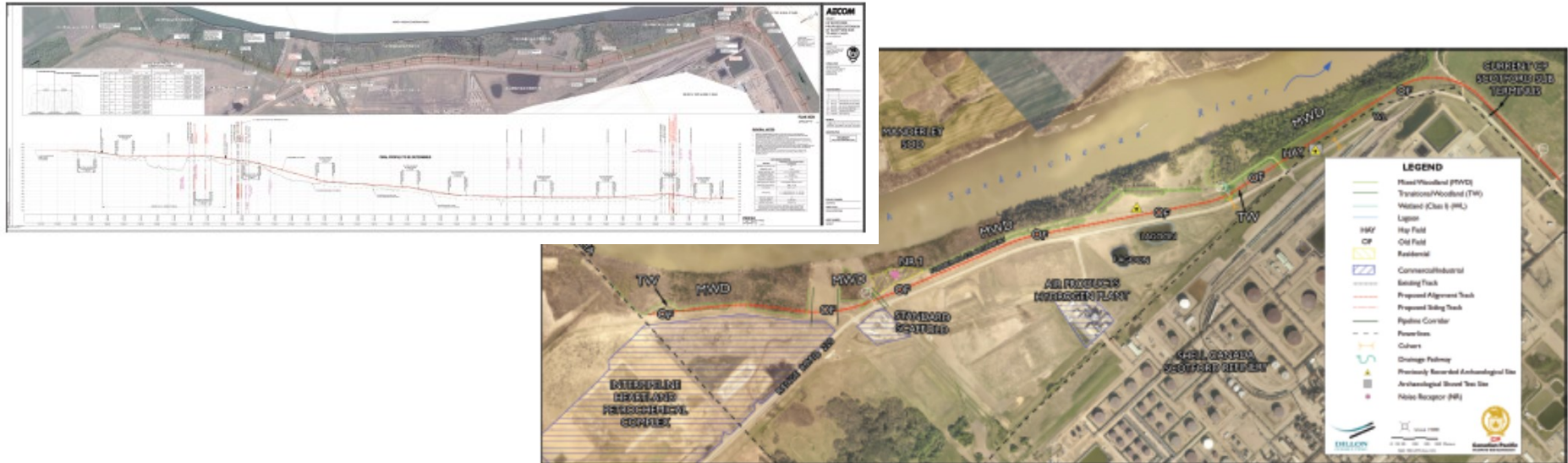
BUILDING INTO IPL'S HEARTLAND PETROCHEMICAL COMPLEX

- CP will be constructing a 4 kilometer extension to our existing track that presently terminates immediately north of Shell's Scotford Upgrader.
- CP's track extension will occur within CP-owned right-of-way on the west side of Range Road 220
- Up to 6,000 rail cars per year or 15 to 20 rail cars per day.
- Track speed design: 15 miles per hour



SCOTFORD TRACK EXTENSION PROJECT

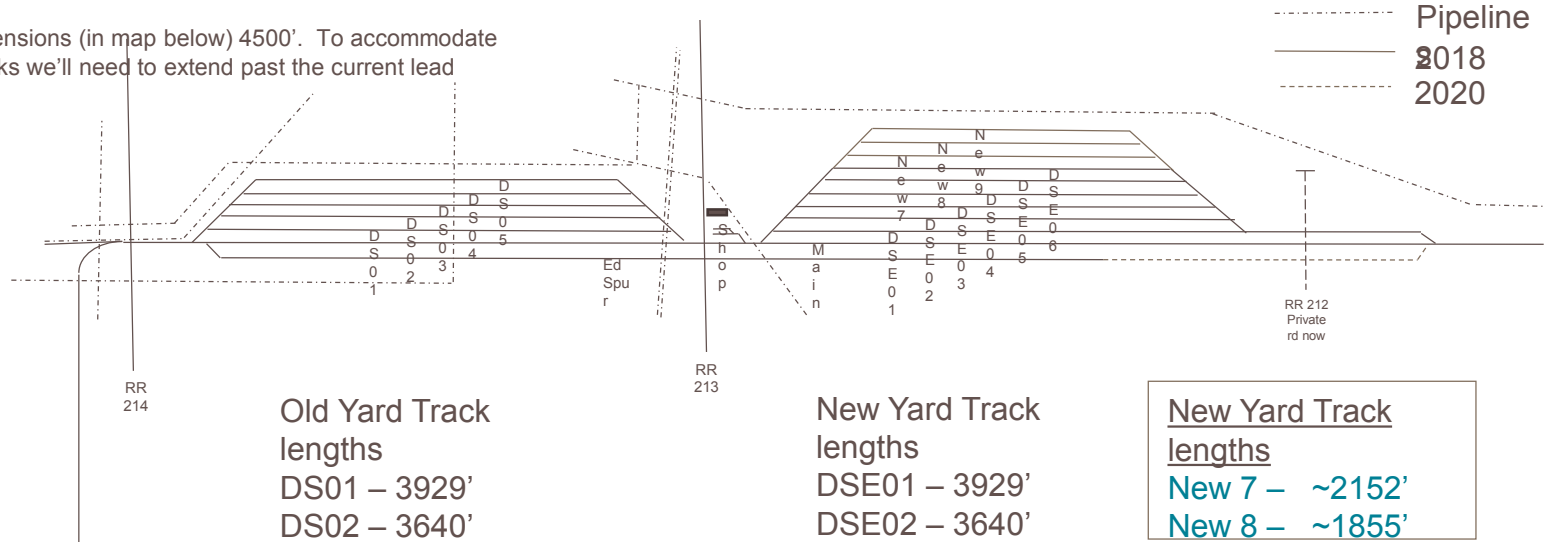
REGULATORY APPROVAL



- Construction will commence as soon as approval is granted by the Canadian Transportation Agency.
- Regulatory review includes assessment for drainage, species at risk, cultural and heritage resources, noise and vibration and public safety.

SCOTFORD YARD CHANGES

- Actual # of additional New tracks may be limited by pipeline proximity
- Work to close RR 213 and RR212 and provide alternate route
- Future extensions (in map below) 4500'. To accommodate longer tracks we'll need to extend past the current lead



Old Yard Track lengths
 DS01 – 3929'
 DS02 – 3640'
 DS03 – 3304'
 DS04 – 3024'
 DS05 – 2800'
 ED Spur – 6400'

New Yard Track lengths
 DSE01 – 3929'
 DSE02 – 3640'
 DSE03 – 3304'
 DSE04 – 3024'
 DSE05 – 2800'
 DSE06 – 2388'

New Yard Track lengths
 New 7 – ~2152'
 New 8 – ~1855'

Total – 5862'
 additional

SAFE TRANSPORTATION OF DANGEROUS GOODS

CONTEXT

Who owns the tracks?

CP owns our own tracks and Right of Way.

Who owns the tank cars?

Tank cars are owned by product producers or third party lessors.

Who owns product in the cars?

The product producer.

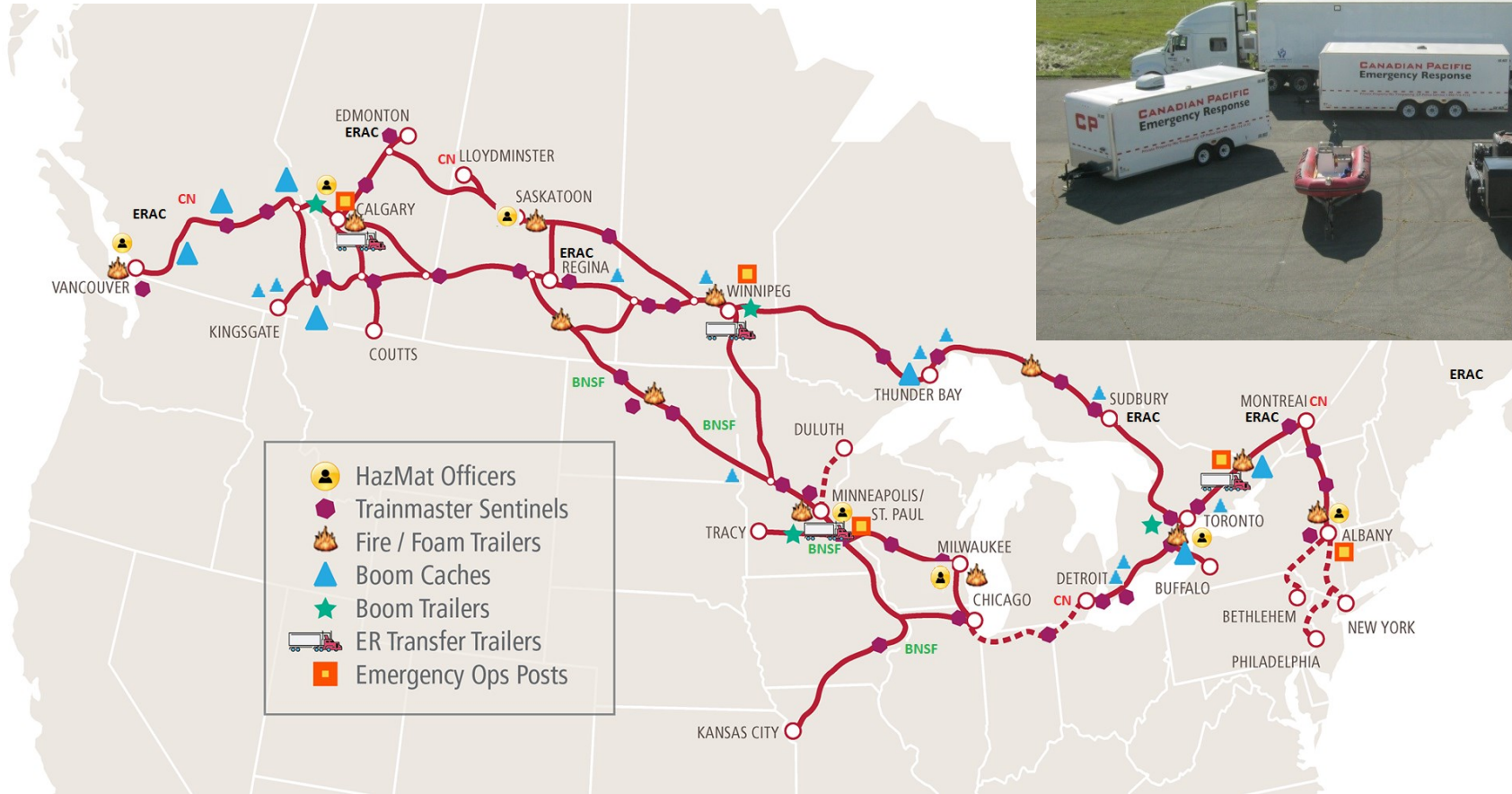
Must CP move dangerous goods?

Yes. The Canadian Transportation Act requires all railroads to move all forms of rail traffic.

Who is liable for the movement of dangerous goods?

The railway. In the event of an incident on CP tracks, CP is liable.

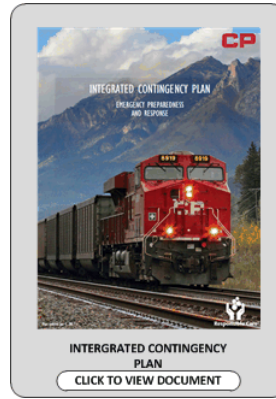
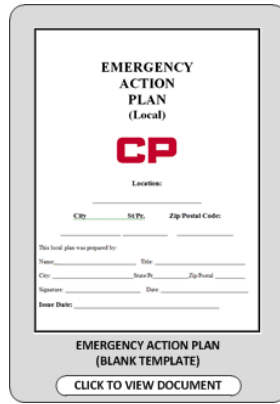
EMERGENCY EQUIPMENT



Mutual Aid:
BNSF
CN
ERAC

EMERGENCY PLANNING

WWW.CPR.CA/HAZMAT



INFORMATION SHARING AND COMMUNICATIONS

ASK RAIL

Traffic Density Study – CPR 2015
Total Rail Shipments – Railcar and Intermodal

Report Provided to: Recipient Name

Date Report Generated: February 22, 2016

Geographical Description: **City Name**

STCC	CLASS	UN #	PROPER SHIPPING NAME	Q1	Q2
4950150	n/a	n/a	FAK-HAZARDOUS MATERIALS	3424	5179
4910191	3	UN1267	PETROLEUM CRUDE OIL	2002	973
4912210	3	UN1202	DIESEL FUEL	643	434
4905421	2.1	UN1075	PROPANE	859	174
4908175	3	UN1203	GASOLINE	136	335
4920359	2.3	UN1005	AMMONIA, ANHYDROUS	382	211
4961619	9	UN3257	ELEVATED TEMPERATURE LIQUID, N.O.S.	191	294
4917403	4.1	UN2448	SULFUR, MOLTEN	259	146
4908179	3	UN3475	ETHANOL AND GASOLINE MIXTURE	8	187
4910165	3	UN1267	PETROLEUM CRUDE OIL	298	0
4909230	3	UN1230	METHANOL	109	62
4905423	2.1	UN1075	BUTANE	151	88
4905752	2.1	UN1075	PETROLEUM GASES, LIQUEFIED	164	150
4918311	5.1	UN1942	AMMONIUM NITRATE	90	85
4905419	2.1	UN1075	LIQUEFIED PETROLEUM GAS	121	45
4961166	9	UN3166	ENGINES, INTERNAL COMBUSTION	75	141
4941144	9	UN2211	POLYMERIC BEADS, EXPANDABLE	47	110
4917508	4.1	UN1869	MAGNESIUM	68	92
			ENVIRONMENTALLY HAZARDOUS SUBSTANCES, SOLID		

TELUS 8:54 AM 59%

AskRail

RAIX1102

Equipment Details **View Train**

HAZARDOUS

Car Information

RAIX 1102
LOADED
TANK CAR
111A100W1

Contents

Quantity
203510 Pound-1 Tank

Proper Shipping Name
PETROLEUM CRUDE OIL

HazardClass
UN1267

Packing Group
3

Car Lookup Rail Information Hazardous Materials

AskRail

Done

GUIDE 128
FLAMMABLE LIQUIDS (Non-Polar / Water-Immiscible)
POTENTIAL HAZARDS
FIRE OR EXPLOSION

HIGHLY FLAMMABLE: Will be easily ignited by heat, sparks or flames.

Vapors may form explosive mixtures with air.

Vapors may travel to source of ignition and flash back.

Most vapors are heavier than air. They will spread along ground and collect in low or confined areas (sewers, basements,

www.cpr.ca/Hazmat

- TRANSCAER US
- TRANSCAER Canada
- Chlorine Safety Tour
- Anhydrous Ammonia Training Tour
- Transport Canada Competency Guidelines for Responders to Incidents of Flammable Liquids in Transport
- Emergency Preparedness for Rail Incidents Involving Flammable Liquids in Canada
- JIBC - Justice Institute of British Columbia
- Pipeline and Hazardous Materials Safety Administration
- Transportation rail incident preparedness & response: flammable liquid unit trains student workbook
- Security and Emergency Response Training Center (SERTC)
- SERTC Training for Crude-by-rail
- Ethanol Emergency Response Coalition (EERC)
- Responding to an Ethanol Incident
- American Petroleum Institute / Association of American Railroads TRANSCAER Crude by Rail Safety Video



FREIGHT RAIL IS HIGHLY EFFICIENT

- CP is committed to being a responsible rail operator through the integration of sustainability principles into our every day business practices.
- Studies have demonstrated transportation by railway to be the most economical and environmentally responsible mode of moving freight long distances over land.

75%

**FEWER GHG
EMISSIONS**



GHG REDUCTION MOVING FREIGHT BY
TRUCKS⁽²⁾

4 X



MOVING FREIGHT BY RAIL IS ON AVERAGE
FOUR TIMES MORE EFFICIENT THAN
TRUCKS⁽²⁾



SHIFTING JUST 15% OF FREIGHT FROM
TRUCKS TO RAIL, WOULD REDUCE GHG
EMISSIONS BY CLOSE TO 5.6 MEGATONNES
OF CARBON DIOXIDE EQUIVALENT⁽³⁾

EFFICIENCY

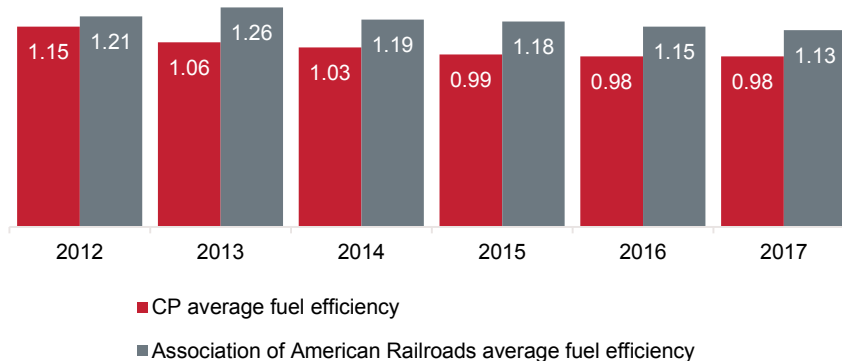
Rail transport is a critical component of the emerging lower carbon economy.

In recent years, CP has made significant enhancements to our network, practices and locomotive fleet to dramatically improve the fuel efficiency of our operation.

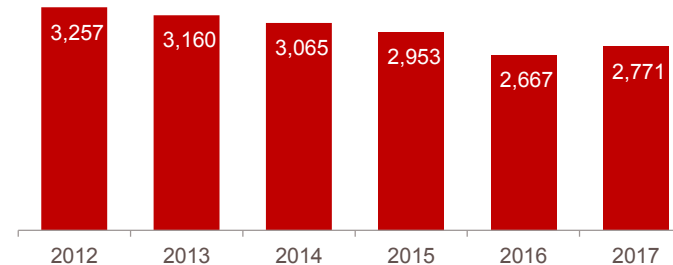
Investments in refurbished locomotives, fuel use best practices, upgraded infrastructure and technology have helped CP improve fuel efficiency by approximately 20% since 2012, resulting in one of the best fuel efficiency rates of any freight railway in North America.

These initiatives have subsequently reduced our greenhouse gas emissions by 18% in the same timeframe.

Locomotive Fuel Efficiency CP vs. AAR
(US gallon per 1,000 GTMs)



CP Locomotive GHG Emissions*
(1,000 TCO₂E)

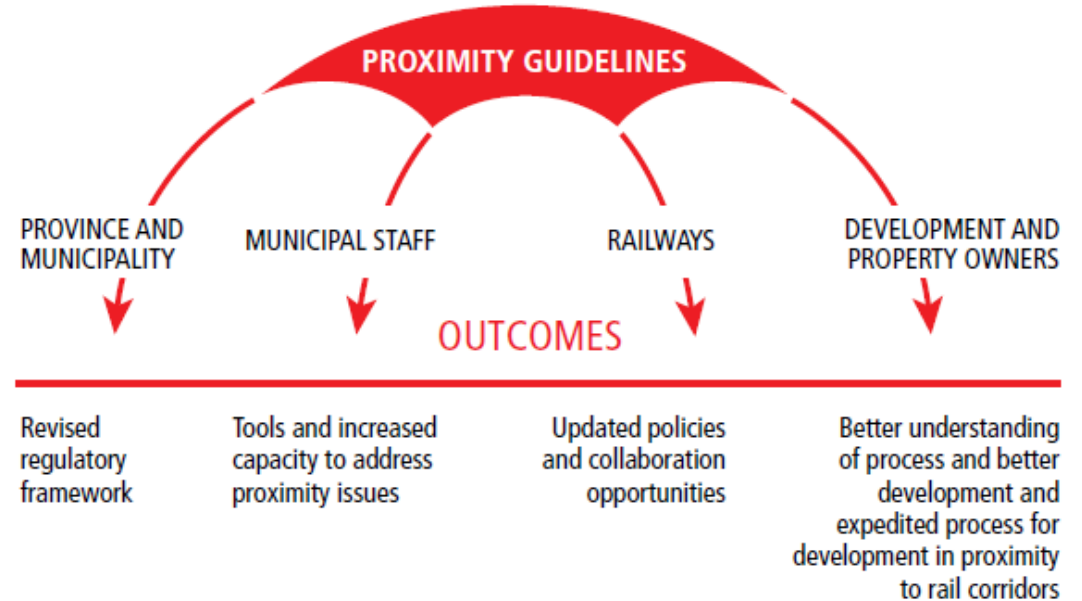


*As reported to the CDP

PROXIMITY GUIDELINES

WWW.PROXIMITYISSUES.CA

- Created by the Federation of Canadian Municipalities and the Railway Association of Canada.
- Updated in 2012.
- Re-launched at FCM 2013 in Vancouver



WHO DO I CALL?

This number MUST be in your community emergency plan:

CP Police Service Emergency Line 24/7

800 716-9132

CONNECT

Mike LoVecchio
Director Government Affairs
778 772-9636
mike_lovecchio@cpr.ca

Public information:
CP Community Connect (24/7)
800 766-7912
community_connect@cpr.ca
www.cpr.ca
@CanadianPacific

Emergencies:
CP Police Service (24/7)
800 716-9132