



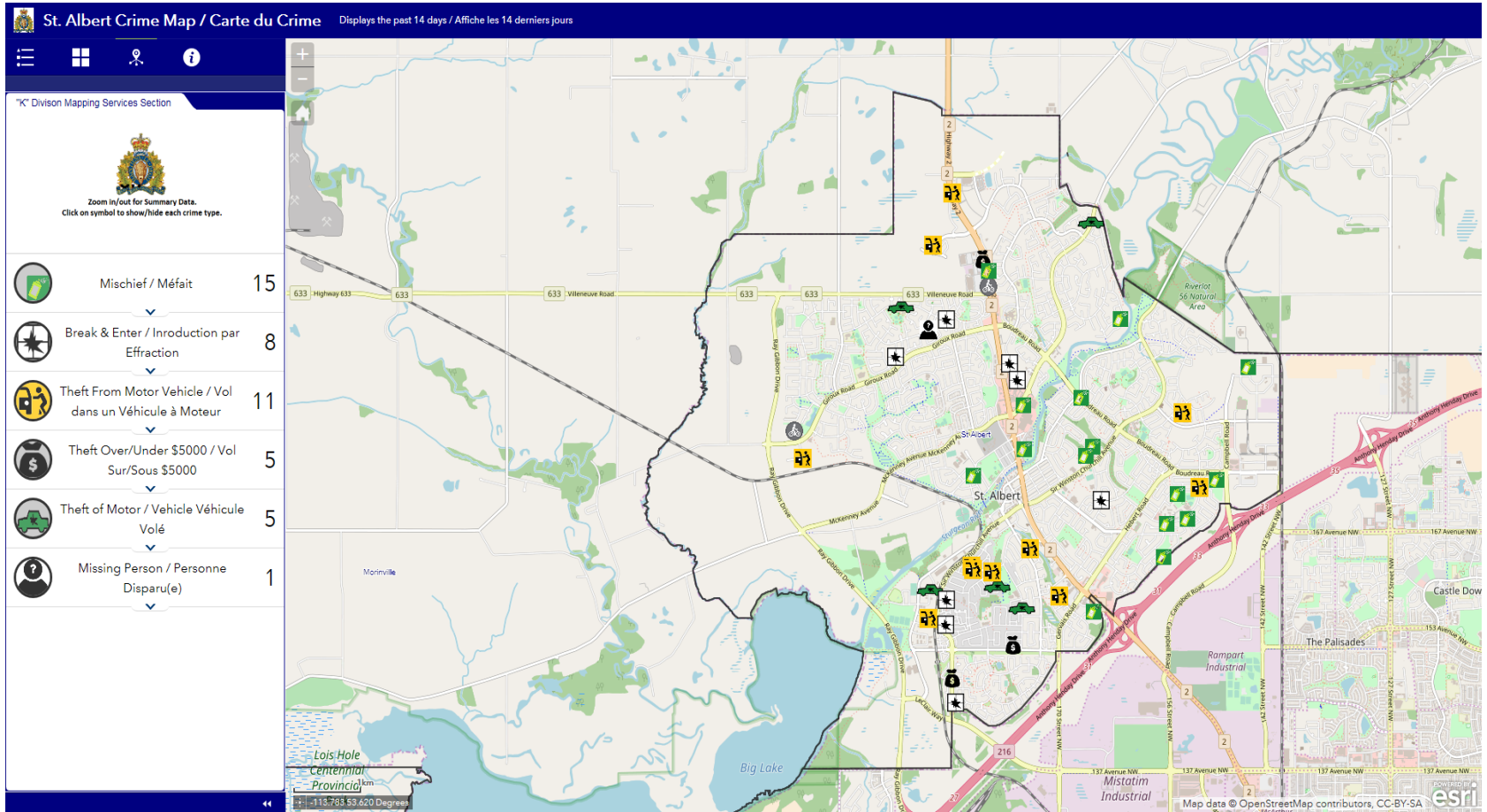
Public Facing Crime Map

Strathcona County RCMP & Enforcement Services



Royal Canadian Mounted Police
Gendarmerie royale du Canada

Canada 





Crime mapping helps law enforcement management make better decisions, target resources, and formulate strategies that include crime reduction, Intelligence-led policing, Problem-oriented policing, and assists in Community policing.

There are 2 maps as part of the Crime Mapping Application:

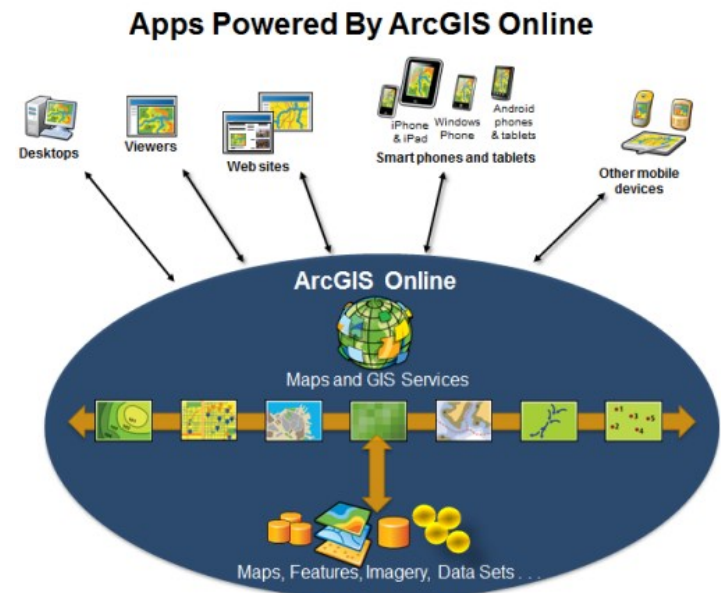
1. the internal map, which RCMP members with a designated account will use to add and view data; and
2. the public map, which the general public can view the crime data (only the last 14 days of data is displayed to the public).





The map uses ArcGIS Online technology. ArcGIS Online is a collaborative web GIS platform created by ESRI. It allows for the use, creation and sharing of maps, applications and data.

ArcGIS online servers are located in the USA; therefore, none of the information on this server is private or protected – we will only publish the same information that is on our Twitter feed and/or sent out in news releases.





Parameters:

Only certain crime types will be presented on the map:

- Theft from Motor Vehicle;
- Theft of Motor Vehicle;
- Break & Enter;
- Theft over / under \$5000
- Mischief; and
- Missing Persons.

*The Missing Person entries will only contain a completed, already approved, PDF.
(The same PDF that currently appears on our Twitter account).*

Emergency Situation Flag – we are investigating having a special “Red Flag” entry where an SME can enter a special message. The flags would only be used in emergency situations and for very short periods (School Lockdown, Unfolding dangerous situation, Evacuation, Train Derailment etc.)





Parameters (cont'd.):

- Plotted addresses will not be exact but rather a nearby intersection.
- Public facing entries will automatically be removed after 14 days.
- The public facing map is fully locked down, people cannot modify, change, leave comments etc.
- The Public Crime map can be embedded into an external site (City site, county site, Crimestoppers, Crime Watch) and the link will be provided once a member is trained and the Crime App is active for the detachment.





Public Facing:

St Albert Detachment has been using the Map Since January and it was launched to the Public on March 3, 2018.

<https://stalbert.ca/city/maps/rcmp-crime-map>

We have been using St Albert as a pilot area to ensure our methods are sound and that our self-designed applications work properly.

There were over 4,400 views on the webpage in the first month alone.

Know your neighbourhood!

Help build safer communities
together.





Time Investment:

- Websites hosting the map will only need to invest 15-30 minutes initially to set it up
- There is no time required to maintain the map
- All updates will occur automatically to the map





FAQs:

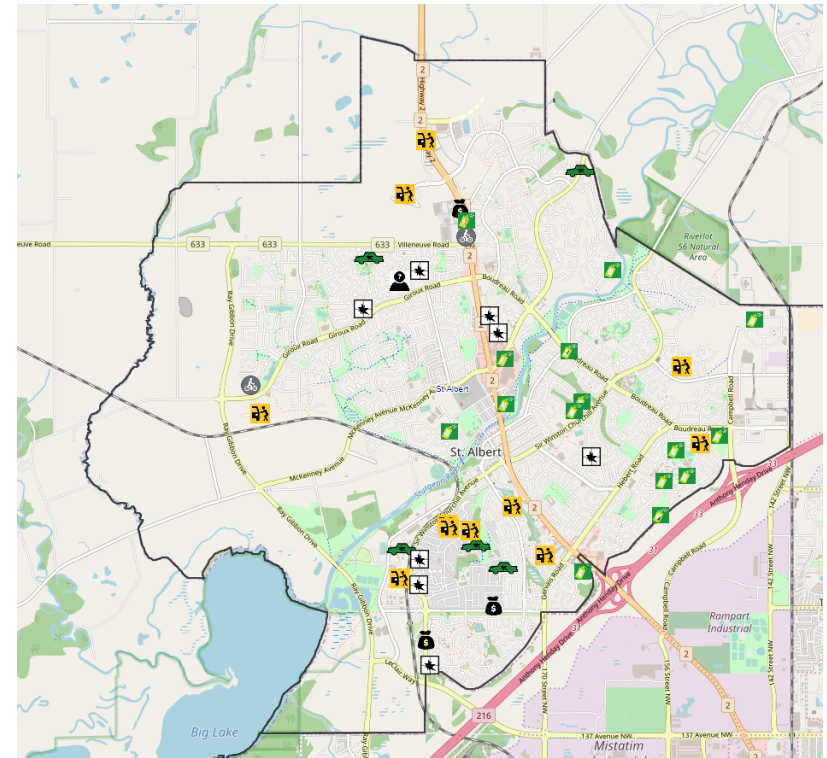
- **Is there a cost to a community to host the Public Crime Map on their website?**
There is no cost. We will supply a URL link for them to embed in their website.
- **When can my community or city host Public Crime Map on their website?**
We will begin distributing the URL links / information for the Public Crime Maps after we have obtained the individual login information.
- **What if there is a need to have a Public Crime Map for a county which spans multiple detachments?**
We currently have Apps built for detachment areas. We can easily make an App which focuses on the county boundary. We will do so as communities sign up to host the App.
- **What if a Detachment or Zone does not want to participate?**
No problem! We can grey out the area to indicate this area is “Not Available”.





FAQs Continued:

- **Will our detachment look “out of control” or “overwhelming” to the public with all the occurrences?**
Not every single occurrence which has happened is being added; only specific ones. Also the public **ONLY** sees the last 14 days.



St Albert's Public Crime Map
May 15 – May 29, 2018





Questions?

