

Strathcona County and Beaver County Intermunicipal Development Plan

and

Strathcona County and Town of Bruderheim Intermunicipal Development Plan

Council Meeting March 3, 2020

Agenda

1. Background
2. Project process
3. Strathcona County and Beaver County Intermunicipal Development Plan (IDP)
4. Town of Bruderheim and Strathcona County IDP

Part 1

Background

What is an Intermunicipal Development Plan?

An IDP is a high-level statutory plan jointly developed by two or more neighbouring municipalities, and where at least one member is not part of a growth region.

IDPs ensure that land use decisions within the IDP area are thoughtfully considered through a cooperative planning approach to support the long-term interests of both municipalities.

Why do we need Intermunicipal Development Plans?

Recent changes to the *Municipal Government Act* require that all municipalities within the province of Alberta with a shared boundary must complete and adopt an IDP, unless both municipalities are part of a growth management region or have a mutual agreement for an IDP exemption.

Part 2 Project process



IDP project timeline

Phase 1

June 2019 - August 2019

- Project initiation
- Background Research
- Draft IDP

Phase 2

August 2019-
December 2019

- Internal and external review of Draft IDP
- Refine Draft IDP
- Public Open House

Phase 3

December 2019 -
March 2020

- Finalize IDP
- Presentation of Plan to both municipalities Councils
- Public Hearings

WE ARE HERE

Strathcona County and Beaver County IDP consultation

- Open House November 21, 2019
 - 332 landowner letters distributed to Strathcona County residents
 - 162 landowner letters distributed to Beaver County residents
 - A comment sheet was mailed out with the landowner letters and was available at the open house
 - Newspaper advertisements in both the Sherwood Park News and the Beaver County Chronicle
 - Posters advertising the open house
 - 38 members of the public attended the open house
 - Eight comment sheets were completed



Strathcona County and Town of Bruderheim IDP consultation

- Open House November 18, 2019
 - 13 landowner letters distributed to Strathcona County residents
 - Six landowner letters distributed to the Town of Bruderheim residents
 - A comment sheet was mailed-out with the landowner letters and was available at the open house
- Newspaper advertisements in both the Sherwood Park News and the Lamont Leader
- Posters advertising the open house
- Four members of the public attended the open house
- Eight comment sheets were completed

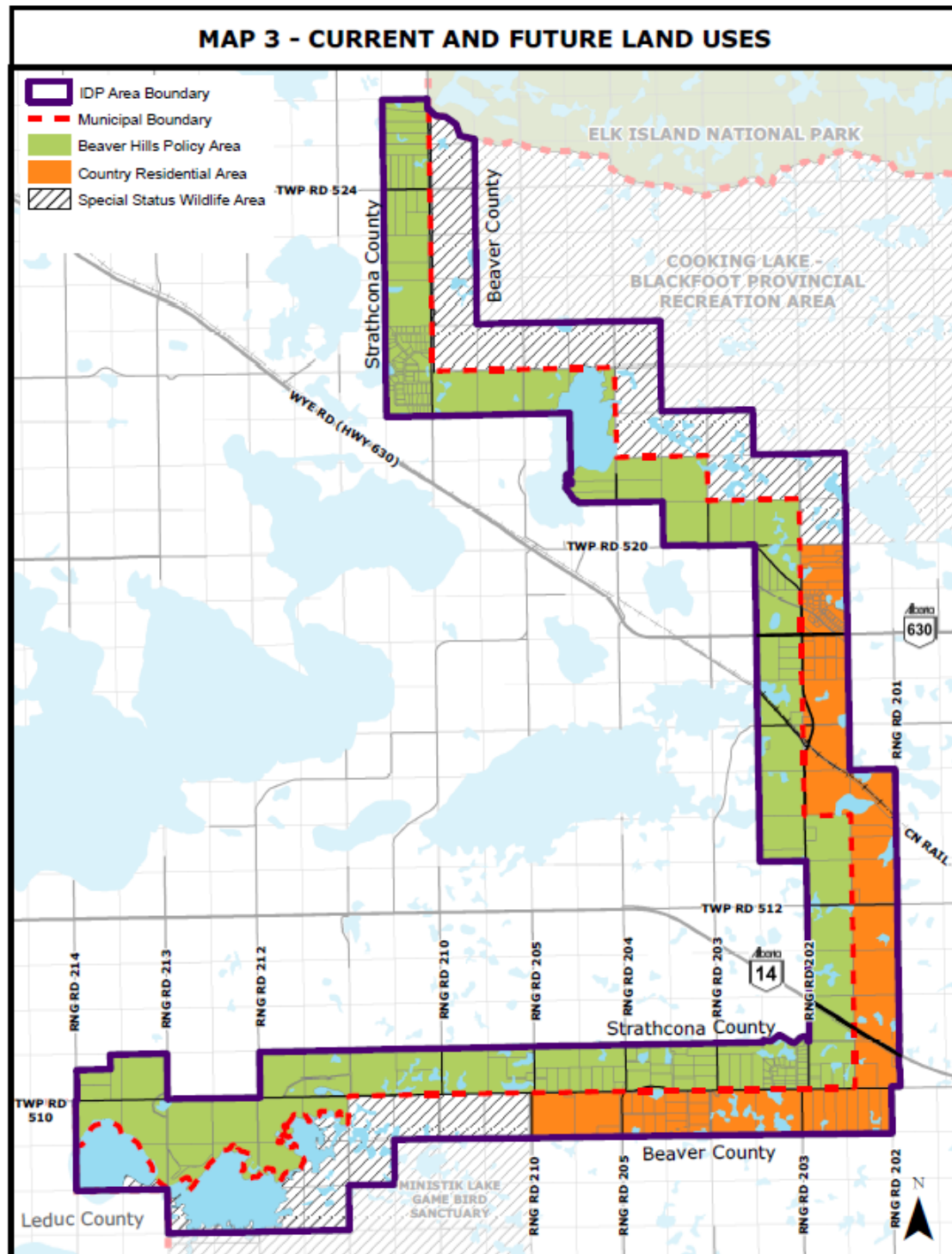


Part 3

Strathcona County and Beaver County IDP



Strathcona County and Beaver County IDP



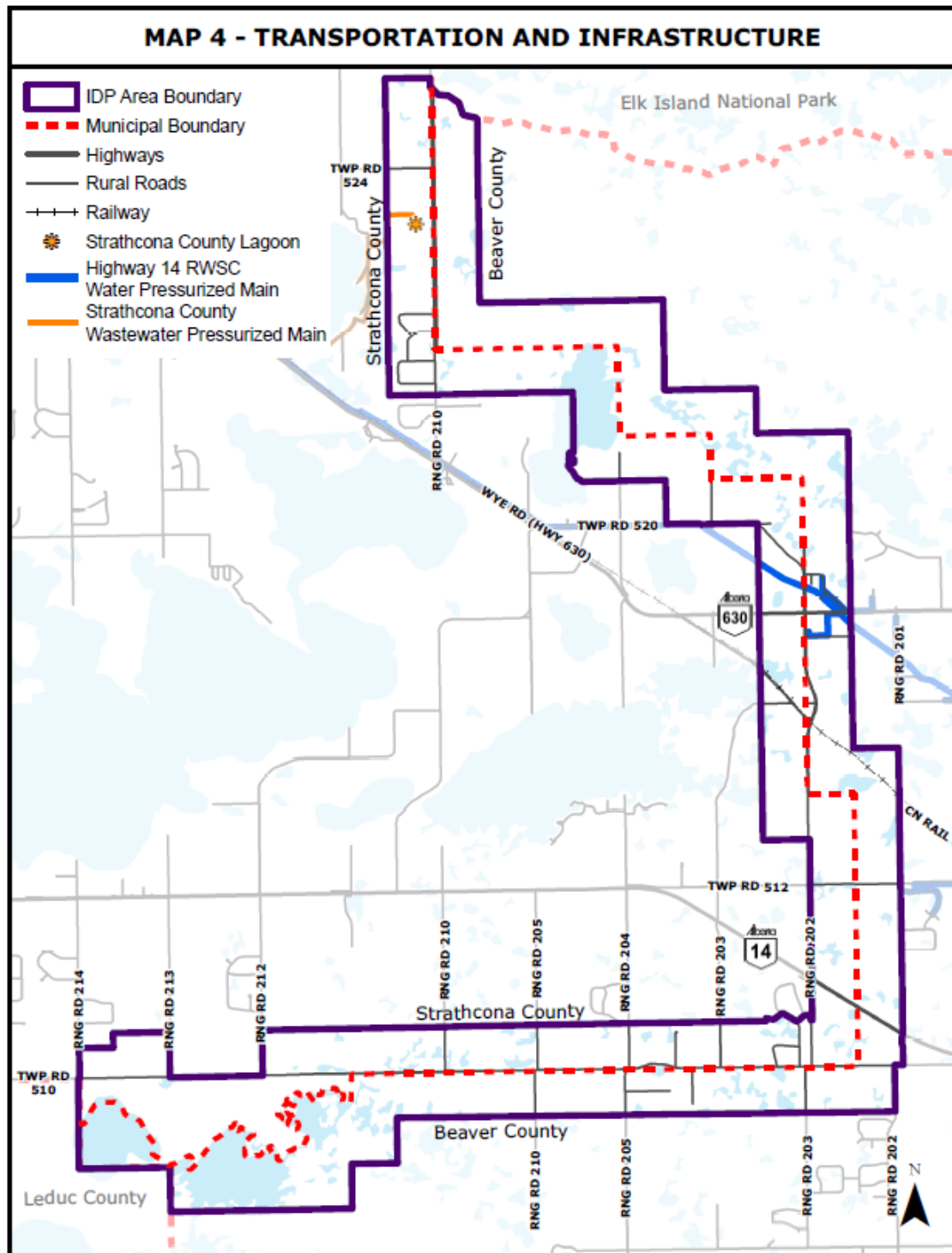
Current and future land uses

The current and future land uses are from the existing areas identified within each municipalities' Municipal Development Plan (MDP).

The IDP area includes:

- The Beaver Hills Policy Area (Strathcona County)
- The Country Residential Area (Beaver County)
- Special Status Wildlife Areas (Beaver County)

Strathcona County and Beaver County IDP



Transportation and infrastructure

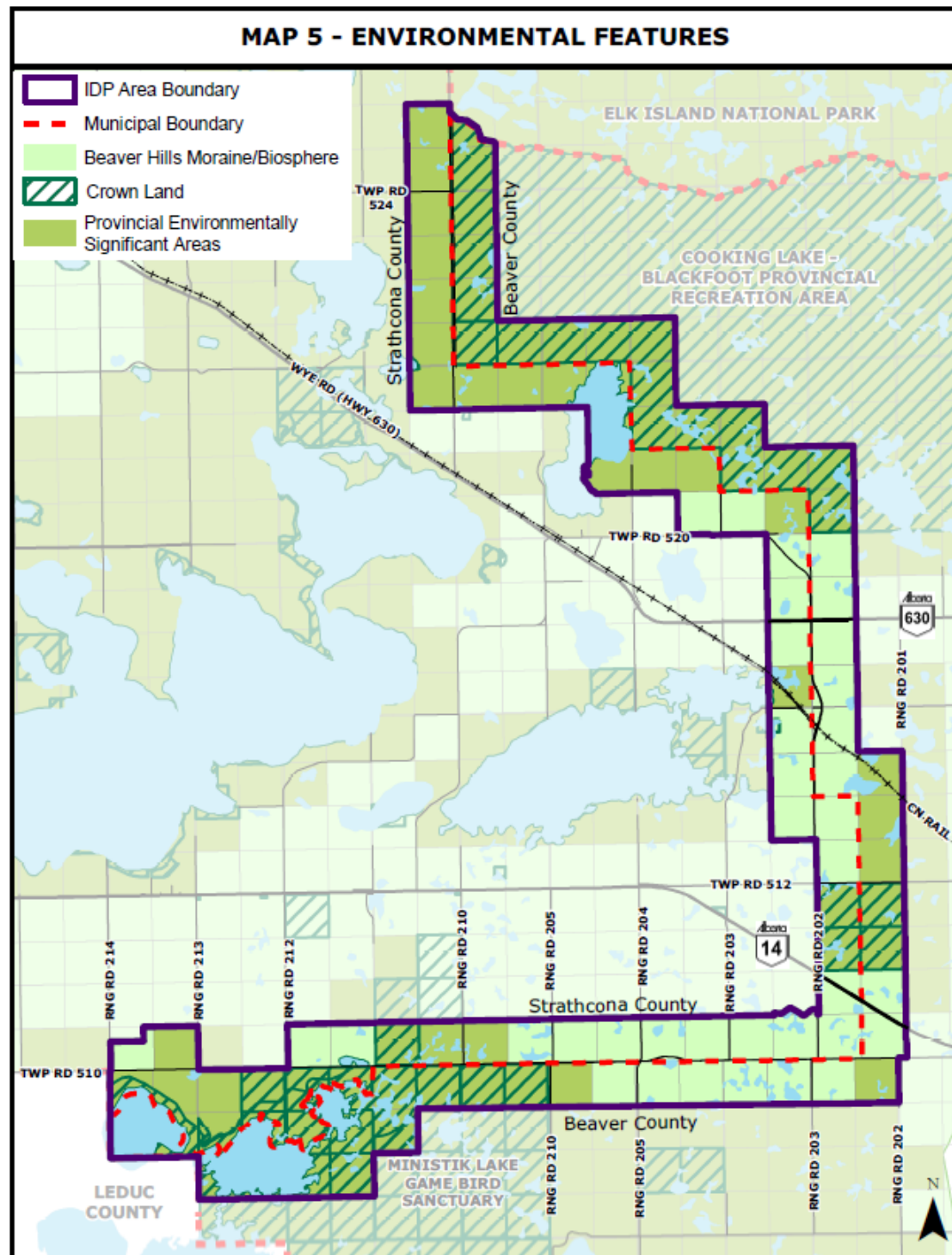
The IDP intends to maintain safe, reliable and efficient transportation and infrastructure within the IDP area.



Strathcona County and Beaver County IDP

Environment

The IDP intends to conserve the natural landscape, environmentally significant areas, Crown Lands, and the Beaver Hills Moraine within the IDP area.



Strathcona County and Beaver County IDP



Economic and social developments

The IDP intends to diversify the economy and provide opportunities for tourism and recreation where it does not adversely affect the agricultural economy and community or the natural environment.

Responsible intermunicipal coordination

The IDP intends to facilitate coordination and communication on land use matters and future growth and development within the IDP area.



Part 4

Strathcona County and Town of Bruderheim IDP



Strathcona County and Town of Bruderheim IDP



Current and Future Land Uses

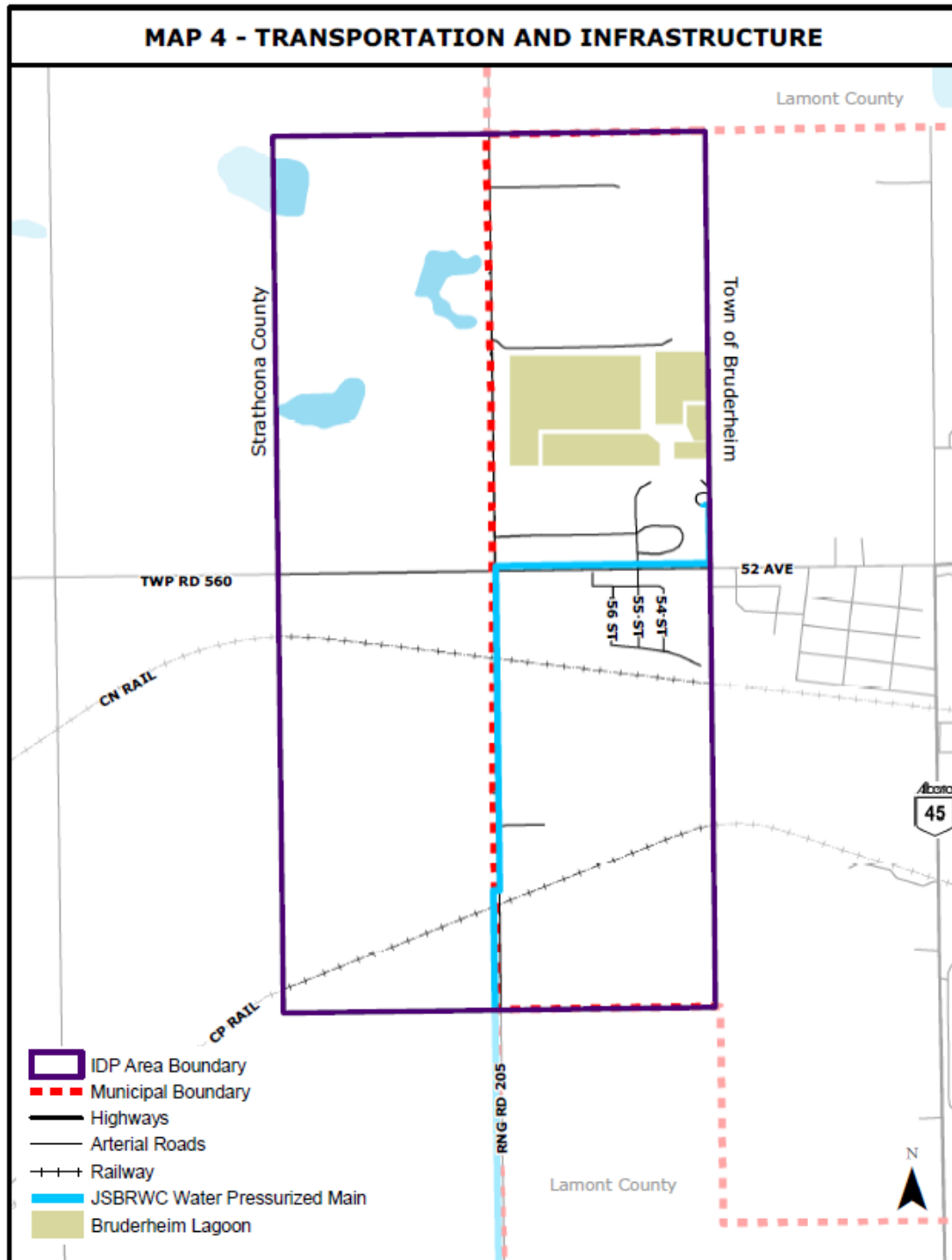
The current and future land uses are from the existing areas identified within each municipalities' Municipal Development Plan (MDP).

The IDP area is located within the Alberta Industrial Heartland.

The IDP area includes:

- The Heartland Policy Area (Strathcona County)
- The Residential Use Area, the Public Utility Use Area, the Recreation and Open Space Use Area, and the Industrial Use Area (Town of Bruderheim)

Strathcona County and Town of Bruderheim IDP

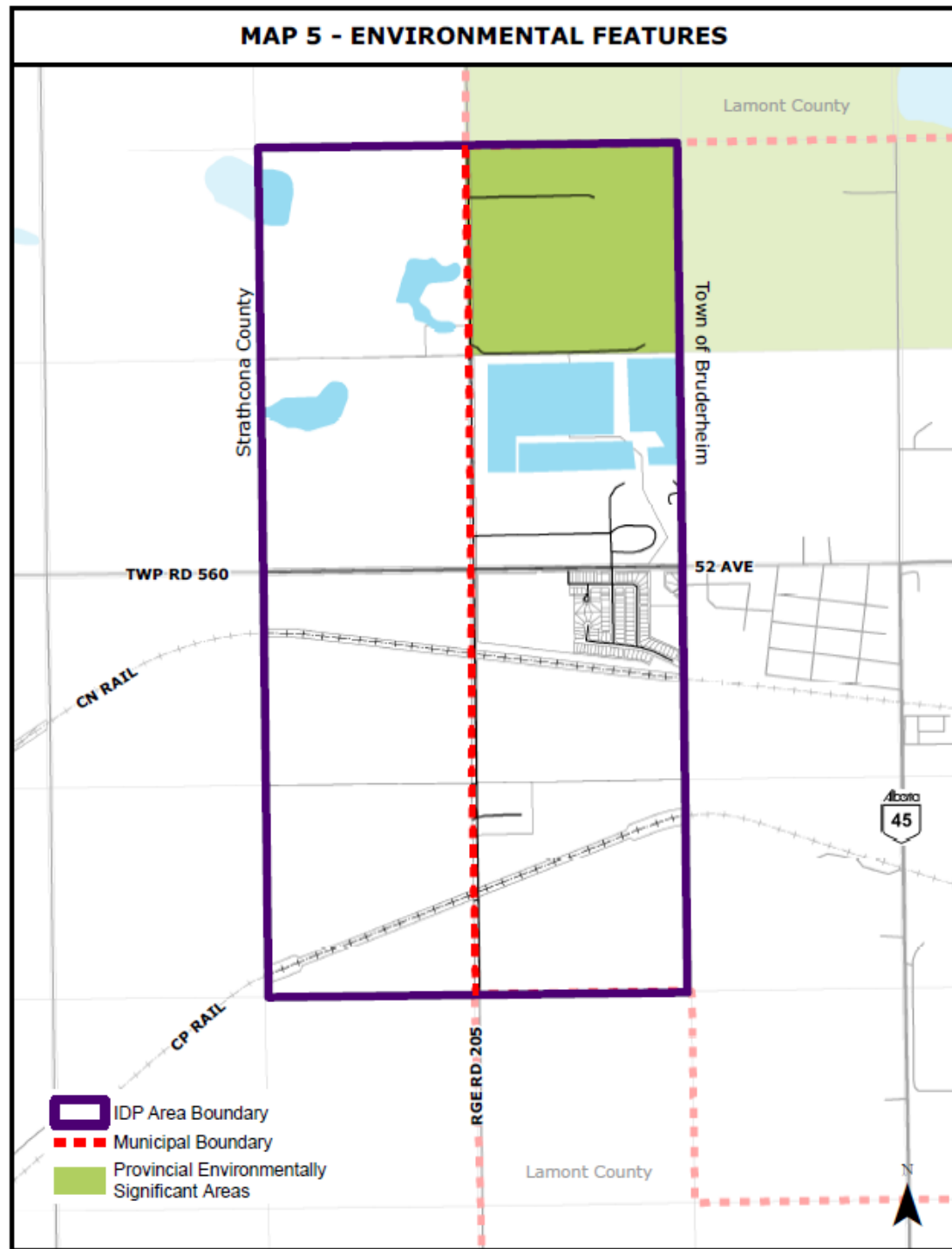


Transportation and infrastructure

The IDP intends to maintain safe, reliable and efficient transportation and infrastructure within the IDP area.



Strathcona County and Town of Bruderheim IDP



Environment

The IDP intends to conserve environmentally significant areas and the natural landscape within the IDP area.



Strathcona County and Town of Bruderheim IDP



Economic and social developments

The IDP intends to diversify the economy and provide employment opportunities within the IDP Area and provide opportunities for recreation and tourism within the Recreation and Open Space Use Area.



Responsible intermunicipal coordination

The IDP intends to facilitate coordination and communication on land use matters and future growth and development within the IDP Area.

Questions?