

Strathcona Refinery

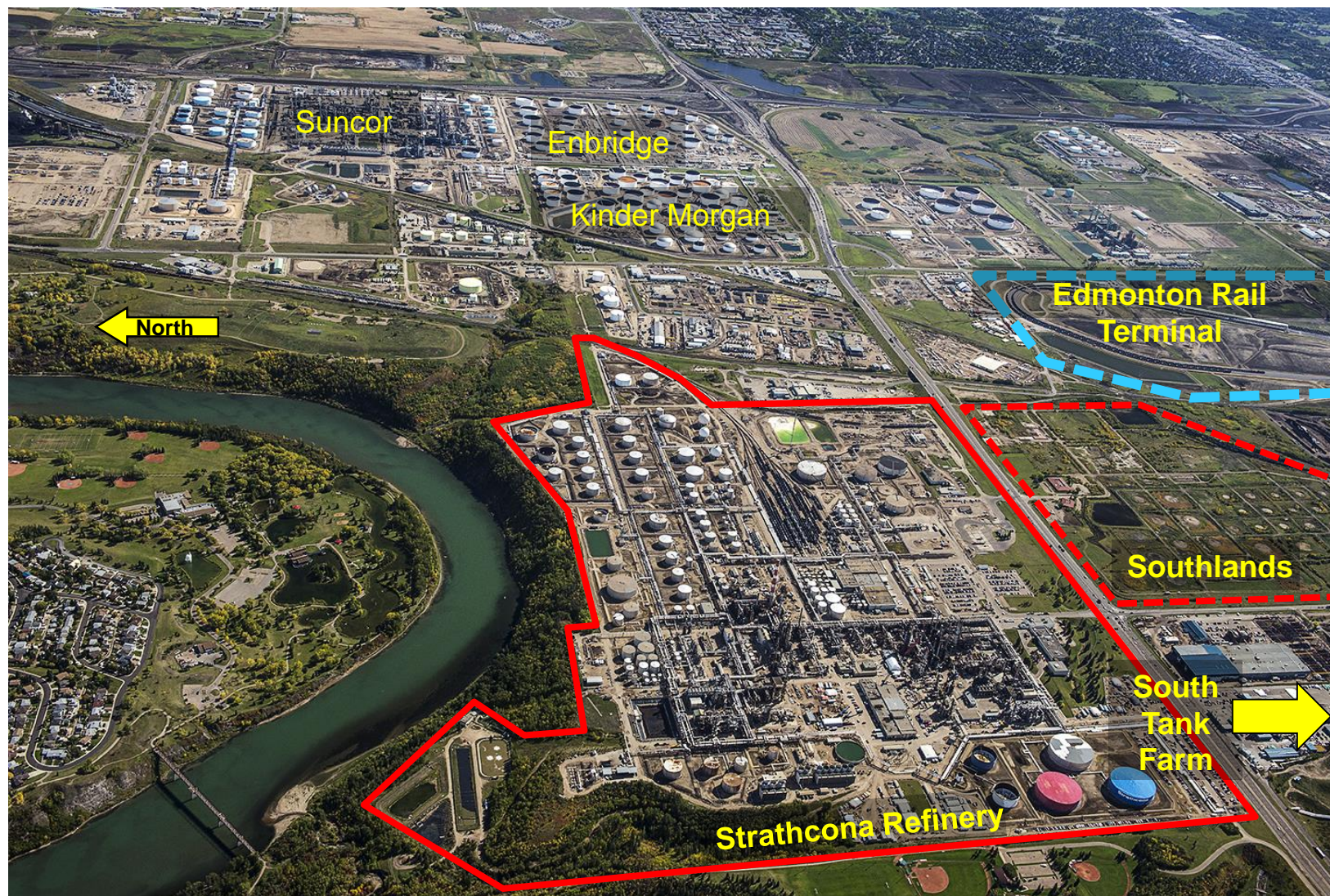
Winning together

Strathcona County Presentation

October 22, 2019



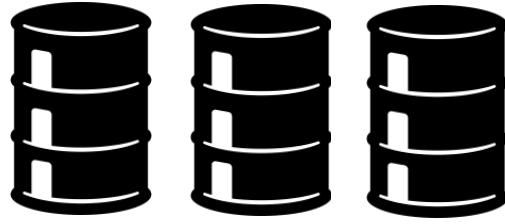
Strathcona footprint



Our refinery operation

**70+
years**

**of refining in
Alberta**



**~200K
barrels/day**



**~30% of Western Canada's
refining capacity**



**~450 employees
~1000 contractors**

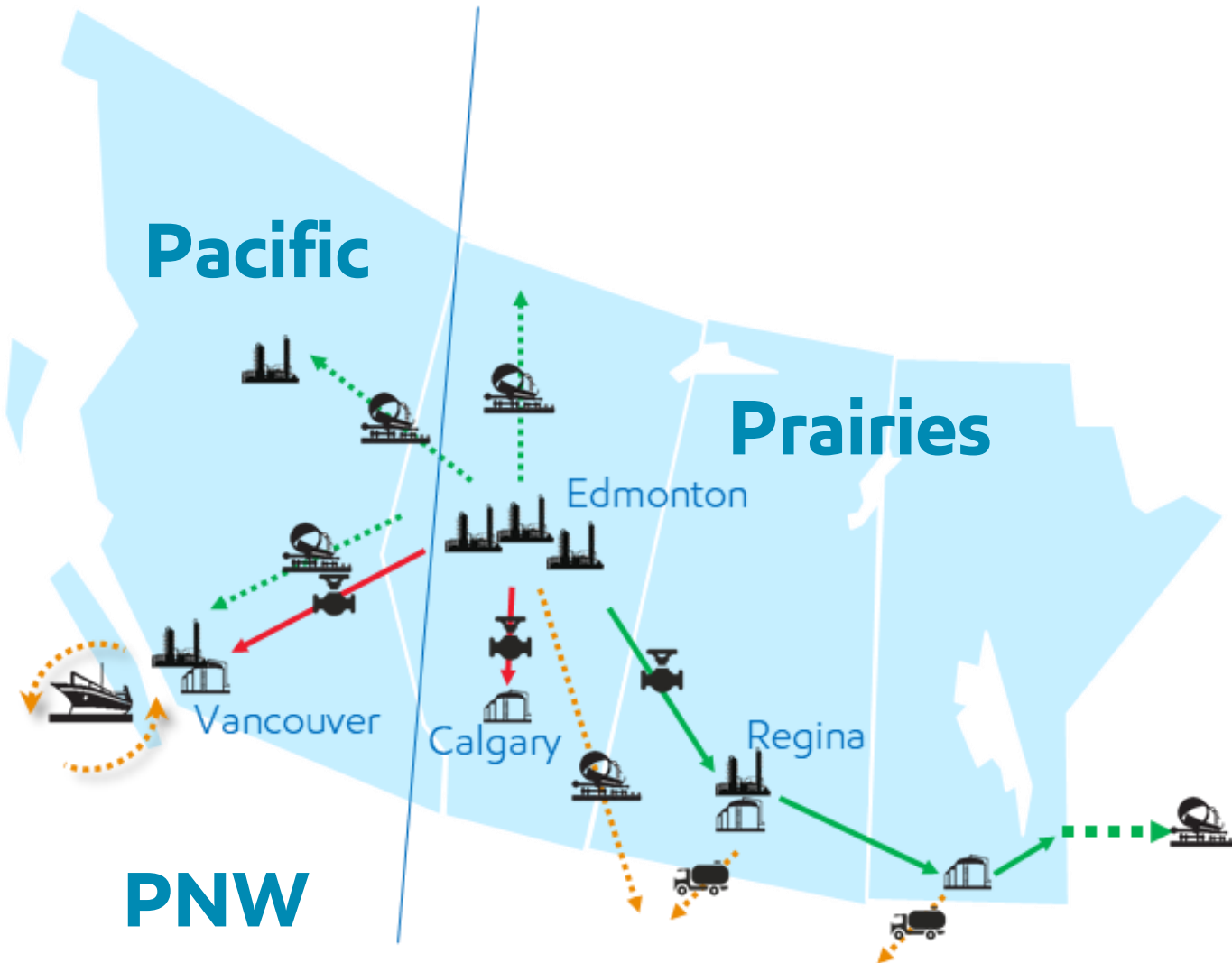


**3/4 of production
transportation fuel**



**~500K fill-ups
a day**

Refinery logistics



Western Canada

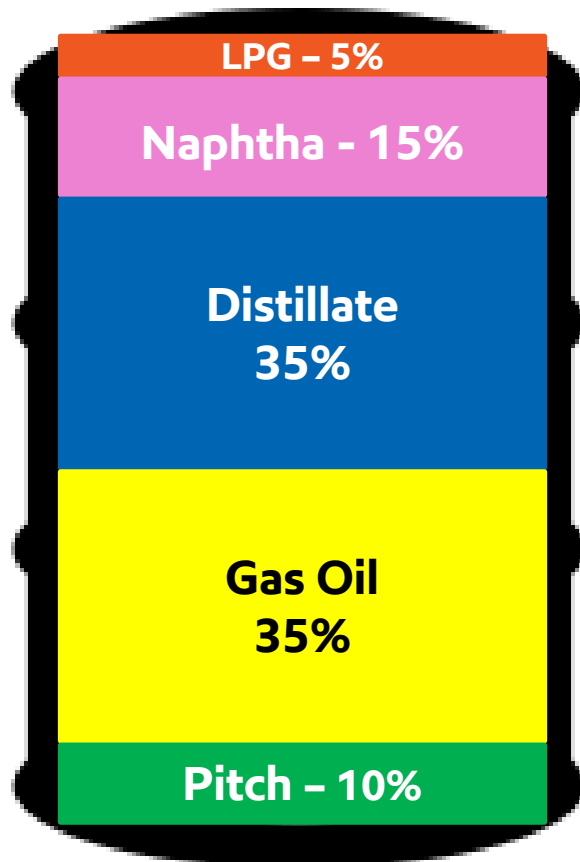
- Large geography with constrained logistics
- Light & heavy crude supply
- Pacific Northwest refiners compete in Vancouver

Getting Products to Market

- Local truck, rail, and pipeline (APPL)
- Prairie rail and pipeline (IPPL)
- West coast rail and pipeline (TMPL)
- Northern US by rail
- Asphalt across NA by rail

Fueling our customers

Typical Light Crude Barrel



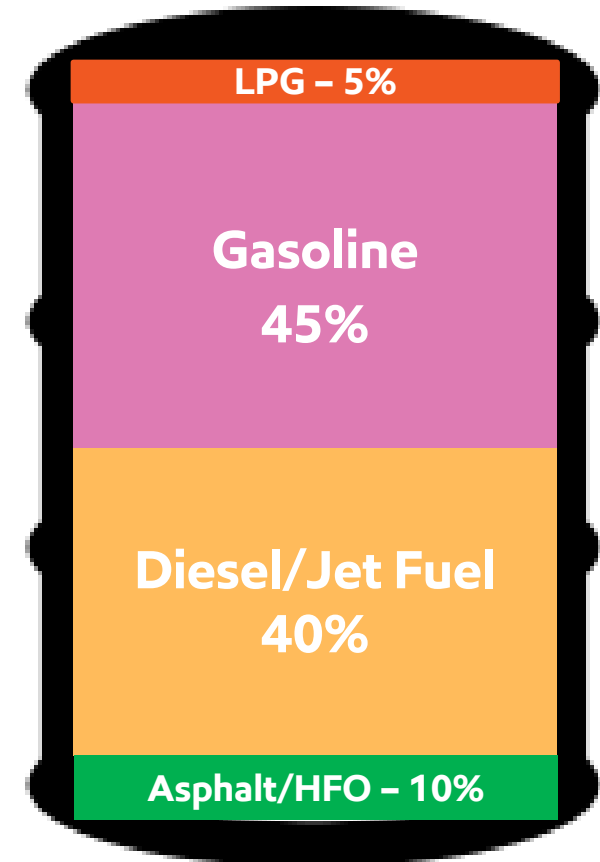
Primary
Separation

Conversion

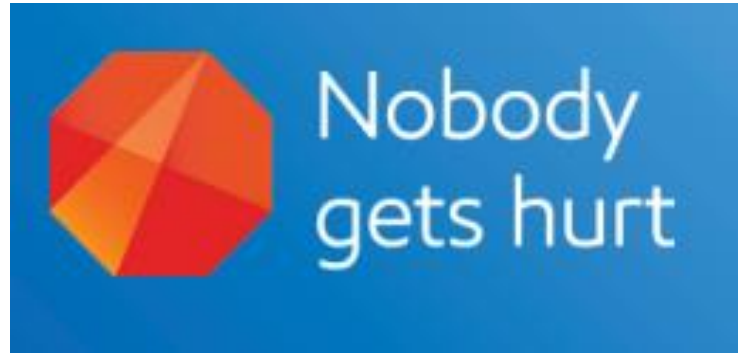
Treatment

Blending

Strathcona Customer



Safe & environmentally respectful



**4 years
injury free**



Part of the community



Information & Volunteer Centre
FOR STRATHCONA COUNTY



A strong volunteer culture



431 volunteers donated

1,287 hours to
36 projects

Investing for tomorrow



Cogeneration update

- Reached construction midpoint
- Will meet 80% of refinery's electricity needs, while supplying 50% of the site's required steam
- 217,000 tons/year GHG reduction province-wide
- Expected start-up in 2020



Rail yard expansion

- Busiest railyard across the company
- Expanded rail yard capacity achieving all-time site loading records for clean products
- Continued focus on expansion and investing in capacity building

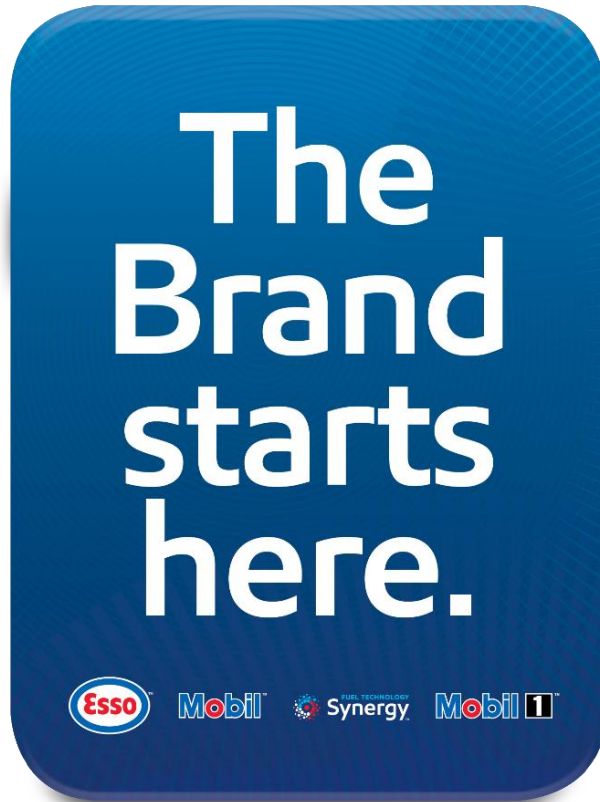


Asphalt growth

- 1 in every 3 KM of Canadian highway made with Imperial asphalt
- Small pilot in 1975, now profitable piece of our business
- Recent investments growing our capacity by 30%
- Asphalt market leader in Canada – customers across the street and across NA



Mobil



Mobil 1