

# Department business plan update

Family and Community Services 2020

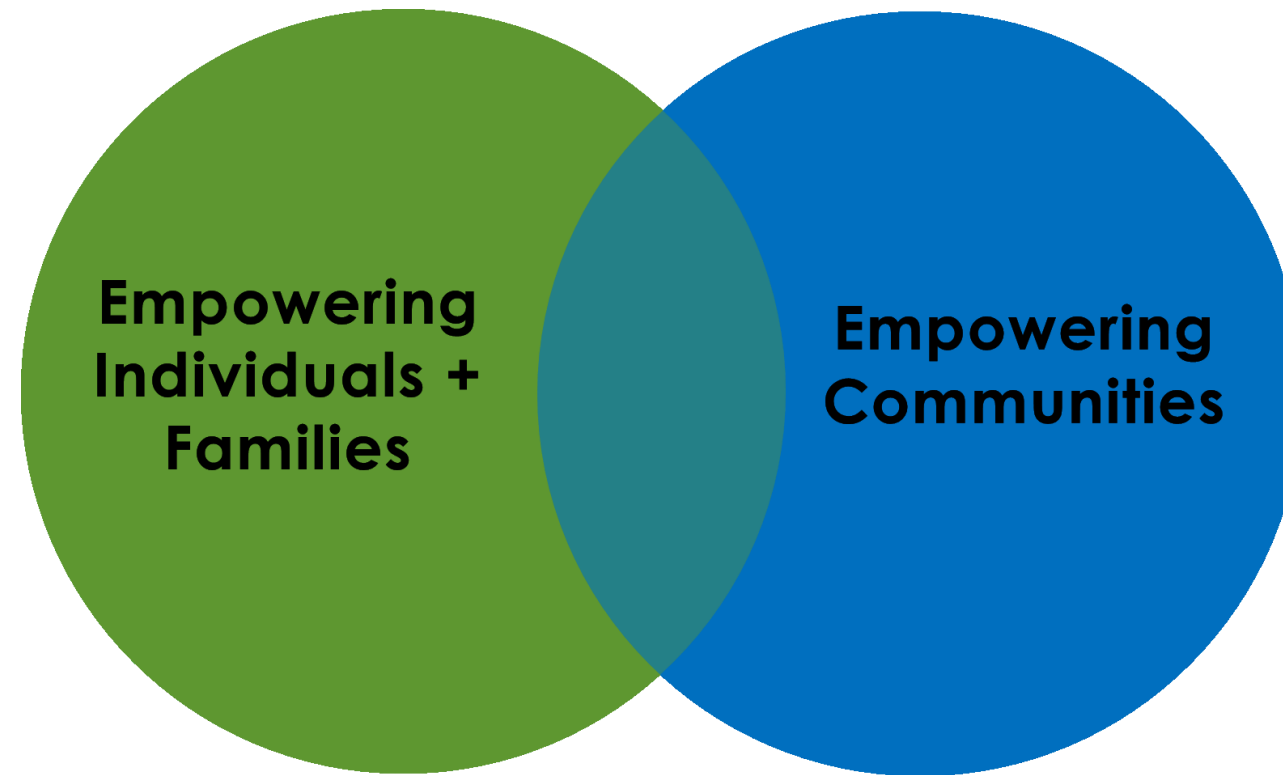
# Department overview



# Employee engagement



# Core business functions



Community & Social Innovation  
Home Support  
Family Resource Network  
Human Services & Innovation

# Progress

## Empowering Communities

- **Community & Social Innovation**

- Policy & social innovation
- Planning, research & evaluation
- Community investment



Award of Excellence

# Progress

## Empowering Individuals and Families

- **Home Support**
  - Community home support
  - Lodge home support



# Progress

## Empowering Individuals and Families

- **Family Resource Network**
  - Social connections and support
  - Caregiver capacity building
  - Child development and well-being



# Progress

## Empowering Individuals and Families

- **Human Services & Innovation**

- Counselling
- Mental health capacity-building
- Solutions navigation



**Stressed about finances,  
groceries or feeding  
your family?**

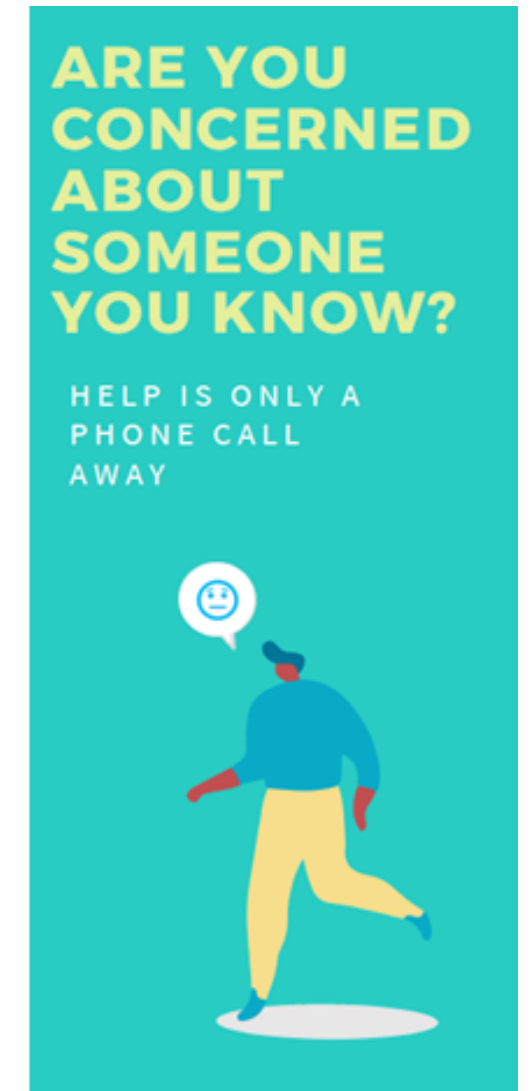
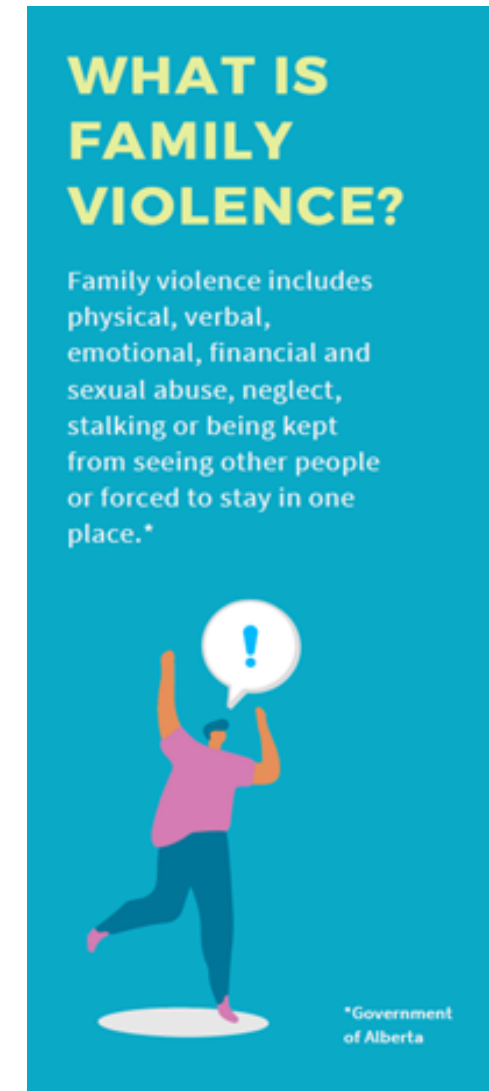
**Family and Community Services**  
is here for you.

**780-464-4044**

# COVID-19

- **Critical Impacts**

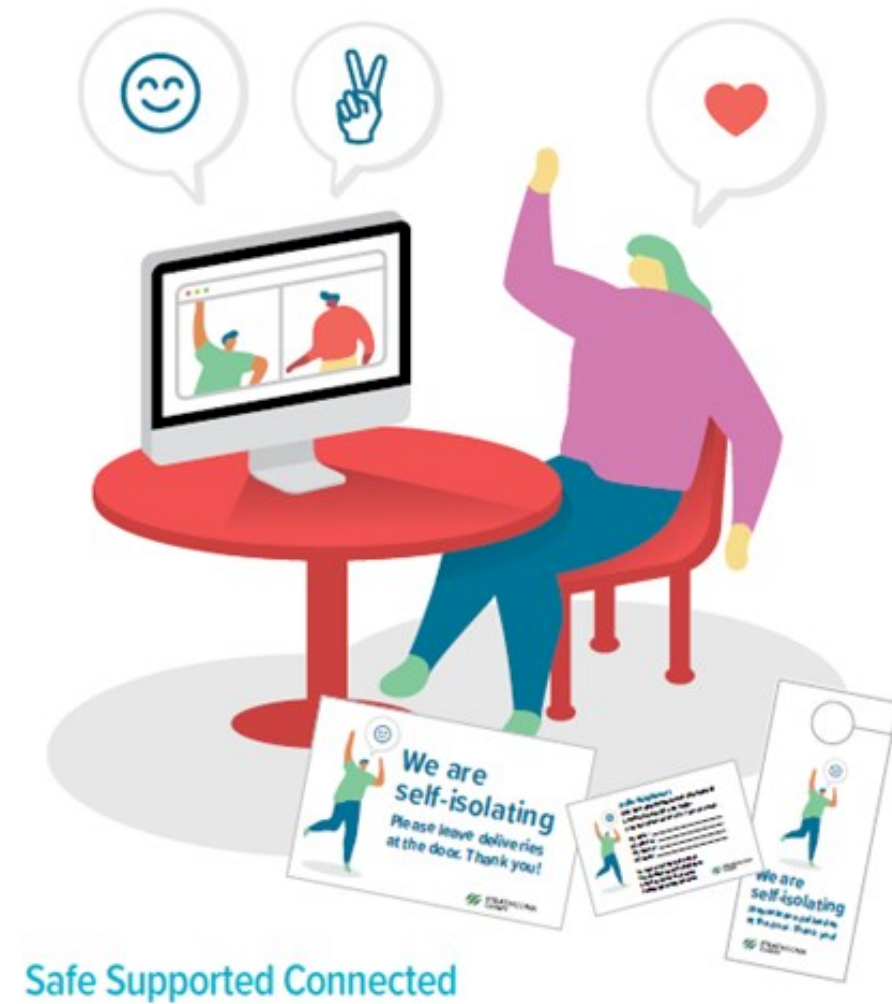
- Family Functioning
- Addictions, mental health and suicide
- Violence and social disorder



# COVID-19

- **Response**

- Basic needs
- Psychosocial health
- Community connection
- Collective action



# Initiatives

- Pandemic recovery
- Anticipate surge in service needs of unknown magnitude

# Questions?

