



SOCIAL FRAMEWORK

A PLATFORM TO UNLOCK THE INGENUITY OF THE COMMUNITY

2020

Social Framework

Early Development



Social Framework Leadership Table



TOGETHER WE CREATE
A **SUPPORTED, SAFE, AND**
CONNECTED COMMUNITY

- A Safe Place
- Children's Mental Health, Alberta Health Services
- altView Foundation
- Boys & Girls Club of Strathcona County
- Big Brothers Big Sisters
- Brittany Lane Housing Co-operative
- Children's Services, Government of Alberta
- Elk Island Catholic Schools
- Elk Island Public Schools
- Habitat for Humanity
- Heartland Alliance Church
- Heartland Housing Foundation
- Linking Generations
- Ministerial Association of Strathcona County
- Northern Alberta Cooperative Housing Association
- Parents Empowering Parents
- Reforming Family Justice
- Robin Hood Association
- Royal Park Realty
- SAFFRON Centre
- Sherwood Park Chamber of Commerce
- Sherwood Park Strathcona Primary Care Network
- Strathcona County Food Bank
- Strathcona County Health Centre and Fort Saskatchewan Health Unit
- Strathcona County Library
- Volunteer Strathcona
- Community Living Advisory Committee
- Family and Community Services
- Communications
- Corporate Planning
- Transit
- Planning and Development Services
- Emergency Services
- Victim Services
- RCMP and Enforcement Services
- Recreation, Parks and Culture

Social Framework New Approach

FROM

- Programmatic responses
- Do *for* people
- Incremental, organization-level outcomes
- Working in silos
- Focus on symptoms

TO

- Systemic thinking
- Do *with* people
- High aspiration and community-wide outcomes
- Collective ownership
- Focus on root causes



**CREATE
INNOVATE
COLLABORATE**



Opioids don't discriminate.

More than just a pill.
strathcona.ca/opioids



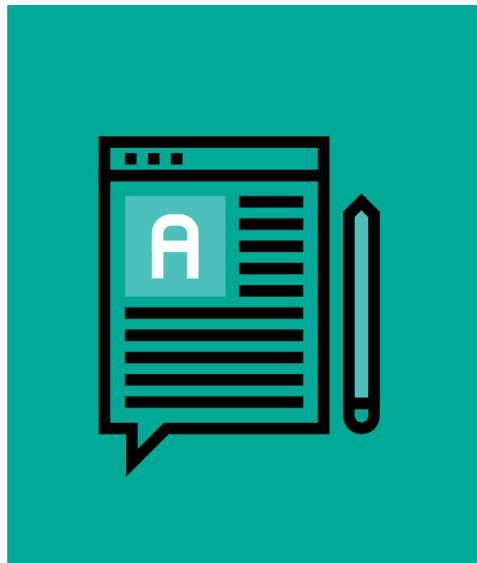
Violence
Threat
Risk
Assessment



Walk in
Counselling
& Navigation

Social Framework

Initiatives



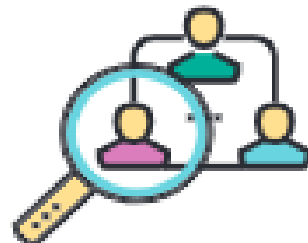
Lessons Learned



Social Framework in Action



Responding to change



Affordability

Access to programs and services

Safety

Connectedness and inclusion

SUPPORTED • SAFE • CONNECTED
COMMUNITY FOR ALL

QUESTIONS?

<https://vimeo.com/380801544>