

Report to EAC

September 15, 2020

COVID-19 Relaunch Status Update

Agenda

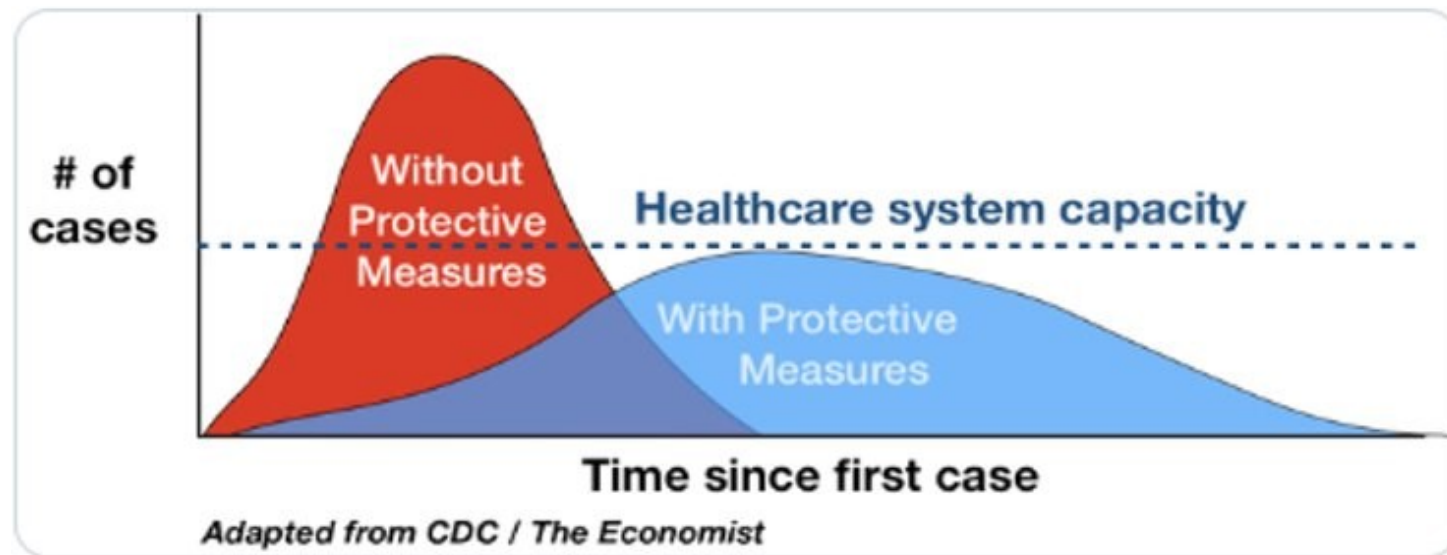
- **Provincial update**
- **Community scan**
- **Internal scan**
- **Face Coverings Bylaw**



Approach

Important to remember that COVID-19 epidemic control measures may only delay cases, not prevent.

However, this may limit surge and gives hospitals time to prepare and manage.



Alberta Health

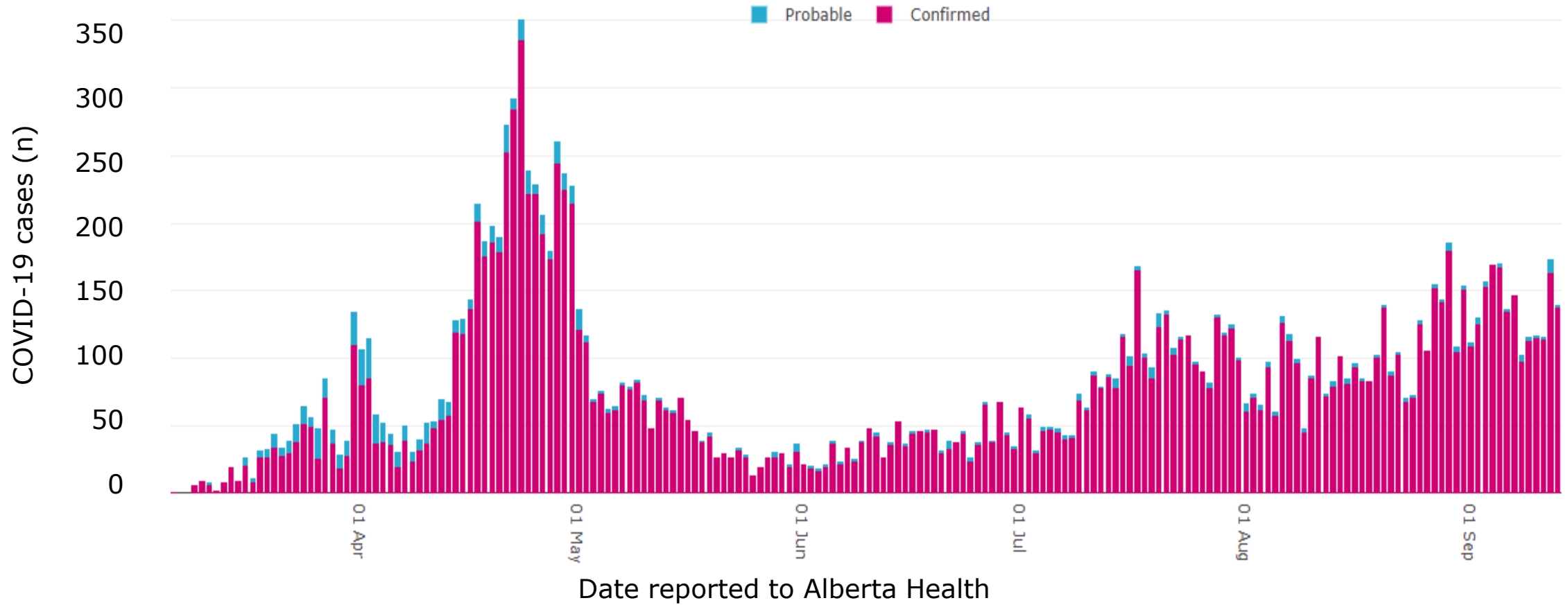
- June 12 – Alberta entered Stage 2 of the Relaunch Strategy

September 13, 2020	Alberta
Confirmed cases	15,833
Active cases	1,538
Recovered Cases	14,041
Deaths	254

September 13, 2020	Sherwood Park*	Strathcona County*
Cases	68	34
Active	14	1
Recovered	53	33
Deaths	1	0

*As defined by Alberta Health

Case count by day



Active cases per 100k

September 13, 2020	Active cases	Active per 100k
Strathcona County	15	15.2
Edmonton	592	57.9
Calgary	489	36.3
Alberta	1430	34.9*

*Based on population as at April 1, 2020



Alberta Health

- Key measures

September 13, 2020	Alberta	Edmonton Health Zone
Active hospital beds (COVID-19)	37	18
Hospital bed capacity	8,483	3,020
Active ICU beds (COVID-19)	7	2
ICU bed capacity	50	

Key measures and timing

Getting to each stage of relaunch depends on our ability to keep infection rates low, and well within the capacity of the healthcare system. Health measures we are watching include:

	Percentage of tests that are positive
	Hospitalization and intensive care unit (ICU) rates

Confirmed cases continue to be monitored in real-time to inform proactive responses in localized areas of the province.

We need to learn as we go and evaluate as we take careful, considered steps from one stage to the next. There may be times we need to take a step back, but in time, we will adjust and move forward together.

Continuous evaluation of health triggers could result in restrictions being removed or reapplied in some localized areas of the province.

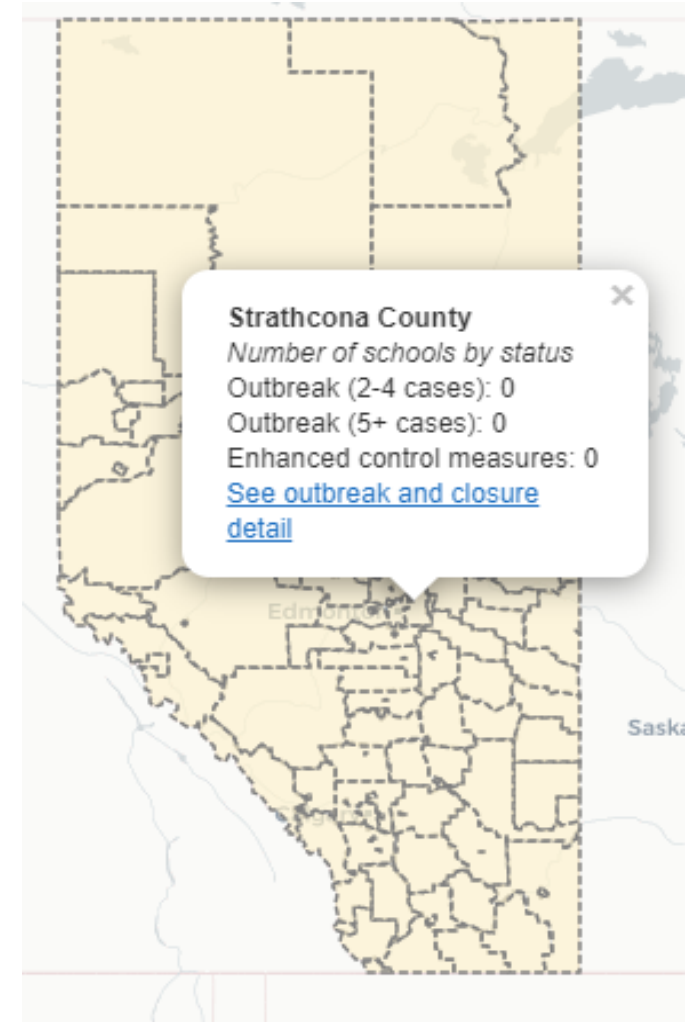
CMOH - September, 2020

- Stigmatizing those with this illness only increases the possibility that fear of this negative attention will keep people from being tested and will drive the virus underground.
- Close contacts are the largest source of exposure of active cases, ahead of both outbreaks and unknown exposures. It's important to be cautious, even when we're with those we love.
- Those who have mild symptoms of sore throat, runny nose, or nasal congestion are not consistently staying home when those symptoms start.
- The rise in active cases in Alberta is something that we all need to be concerned about, and something that is within our power to stop.

COMMUNITY SCAN

School status

- Definitions of confirmed cases in schools:
 - Alert (1 case)
 - Parents will be notified by their child's school as soon as one confirmed case is identified within the school. Not included in the map
 - Outbreak (2+ cases)
 - An outbreak is declared when there are 2 or more confirmed cases in a school setting within a 14 day period where disease could have been acquired or transmitted in the school
 - Outbreak over
 - A school outbreak is declared over when there have been no new confirmed cases in a school for 28 days.
- COVID-19 school status map (Alberta Health Services)



Schools

Elk Island Public Schools

- 89% of students opted for the return of in-school classroom instruction
 - Mandatory use of mask for all staff and students (K-12)
 - Enhanced cleaning and hygiene protocols
 - Daily screening
 - Strict stay at home guidelines
 - Enforced public health measures
 - Cohort and physical distancing strategies
- Infections attributed to EIPS schools (in Strathcona County)
 - Glen Allan Elementary School



Schools

Elk Island Catholic Schools



- 92.3% of students opted for the return of in-school classroom instruction
 - Mandatory use of mask for all staff and students (4-12)
 - Mask use is optional for K-3 students but strongly encouraged
 - Enhanced cleaning protocols in all school and Division building
 - Daily health screening of all students and staff
 - Alberta Health recommendations around physical distancing when possible cohort and physical distancing strategies
 - Prompt pick-up or departure of individuals who demonstrate symptoms while at school.
- Infections attributed to EICS schools (in Strathcona County)
 - St. Nicholas Catholic School

Business community

- Sherwood Park & District Fall Trade Fair
 - Cancelled
- Digital Activity and Travel Guide



Public attendance at Council

- Public in-person attendance within Council Chambers remains limited
 - Capacity for all persons in attendance is 50 and masking is required
 - Masks may be removed when addressing council
- Public hearings including Council and Priority Committee meetings hosted through Zoom.
 - Members of the public can present virtually
 - Likely to continue into the future
- Subdivision and Development Appeal Board meetings conducted via Microsoft Teams
- Preparing to hold Assessment Review Board hearings virtually

Supporting Albertans

- Broadview Station AHS Test Site
 - 53,000+ tests completed to date
 - Averaged 600 tests per day
 - Remain operational through October
 - Over 1 million tests completed throughout Alberta
- Testing in the County
 - 9 Pharmacies offering appointment based testing
 - Asymptomatic testing only

COVID-19 Testing
novel coronavirus (COVID-19)



Family and Community Services (ESS)

- Cumulative and durational impact of COVID-19 stressors
- Anxiety regarding safe return to schools and day care
- Return to work sites for many; continued unemployment for others
- Financial strains, including 20% of Albertans struggling to pay their mortgages
- Particular concern for those for whom vulnerability is new

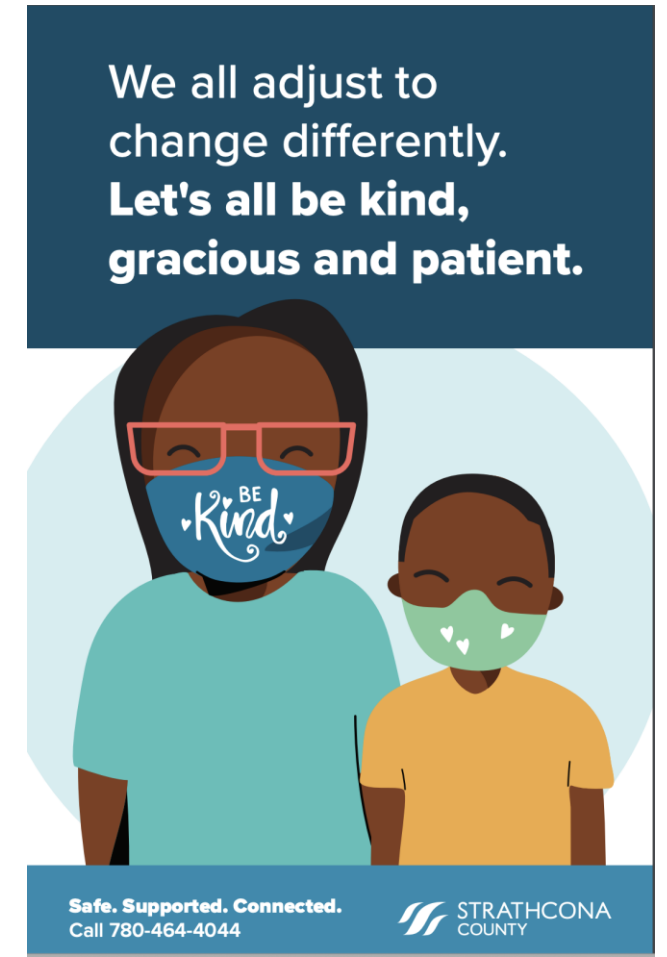
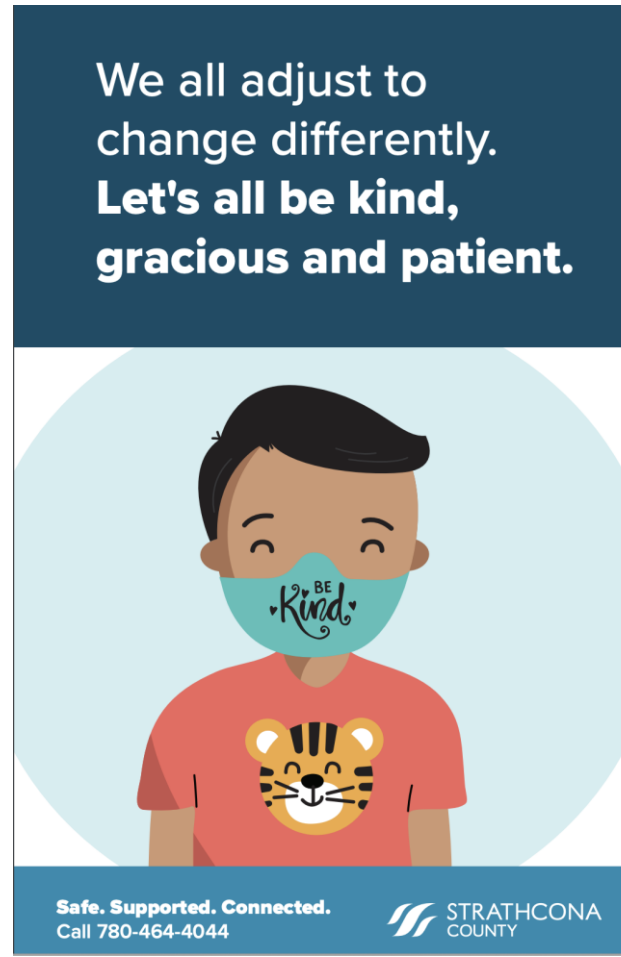
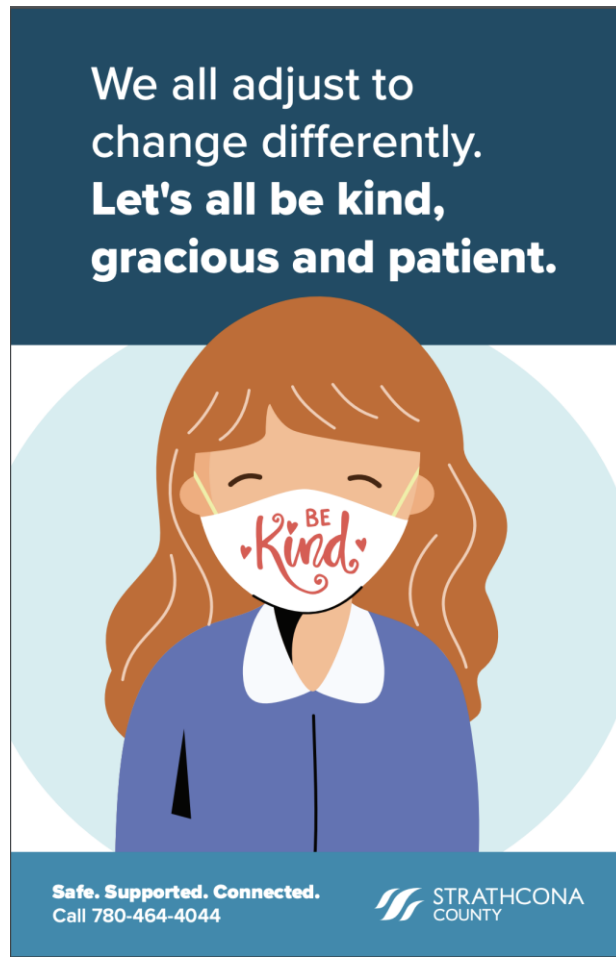
Family and Community Services (ESS)

- Key message....*It's Okay to Not Be Okay*
- Increased ESS Communications
 - Increase awareness of resources and access; normalize and destigmatize
 - Multiple communication methods, including vignettes
- Counselling and Solutions Navigation
 - by telephone, video
 - exploring in-person
- Psychological First Aid free monthly training
- Monitoring provincial, regional and local trends and issues

Kindness campaign

Empathy is especially important for community resiliency.

- Kindness poster series available for community to download at Strathcona.ca/maskbylaw



INTERNAL SCAN

Staff Health Assessment

- Effective: September 14, 2020
 - Mandatory daily requirement
 - Ensure staff are fit for work each day
 - Online questionnaire completed prior attending a County facility
-
- ❖ Ensure the health and safety of staff and those visiting our facilities
 - ❖ Assist with any contact tracing efforts by Alberta Health Services

The screenshot shows a blue-themed web interface for the 'Staff Health Screening Assessment'. At the top, the Strathcona County logo is displayed with the text 'Version: 1.0' below it. The main heading is 'Staff Health Screening Assessment'. A prominent white button with a red border says 'Start Check-in for today'. Below this is a blue button labeled 'Submission Status'. At the bottom, there is a small section of text regarding privacy and data collection, mentioning sections 33(4) and 33 of the Freedom of Information and Protection of Privacy Act, and providing contact information for the Corporate OHS Manager at 780-660-8174 or OHS@strathcona.ca.

COVID-19 cost tracking

- \$2.28 million of the approved \$3.15 million spent or committed
- Highlights:
 - PPE & Cleaning supplies, contracted services
 - \$1.256 million
 - Security
 - \$172,000
 - Communications
 - \$138,000
 - Temporary staff positions
 - \$50,000 (FCS Communications)

Recreation, Parks and Culture

- Masking compliance rates hover around 98%
 - August:
 - 4,159 masks distributed at RPC facilities
 - Successful outdoor movie night event took place in a physically distanced environment at Emerald Hills Regional Park
 - September
 - 329 distributed to date
 - Recreation services and programs continue to relaunch in phases for Fall
 - Kinsmen Leisure Centre now open for lap swimming
- Pre-booked activity time-slots include:
 - Wellness centre, recreational swimming and skating, lap swims and more.
 - Public can view the “know before you go” webpage, and book their time through rec online or by calling a facility

Transit

- Mask compliance
 - Buses: 98%
 - Bethel Transit Terminal: 90%
 - Youth returning to school are doing their part
- Ridership over the summer months down 60% for 2019
 - July-August, first 10 days of September
 - End of August to today, daily passenger trips have doubled
- AHS mask distribution
 - Transit has distributed more than 125,000 masks from Bethel Transit Station
 - Approximately 50,000 masks left to distribute

FACE COVERING BYLAW

Temporary face covering bylaw update

- Bylaw comes into force when Alberta Health Services reports 25 or more active cases within municipality
- The Strathcona County Emergency Management Agency is monitoring active daily infections
- What to expect if the bylaw is triggered:
 - Full communications strategy similar to the Fire Ban process
 - SC Alerts
 - Social Media
 - Web
 - Road side and print ads
 - Focus will remain on education

Be in the know
Sign up for Strathcona County Alerts

