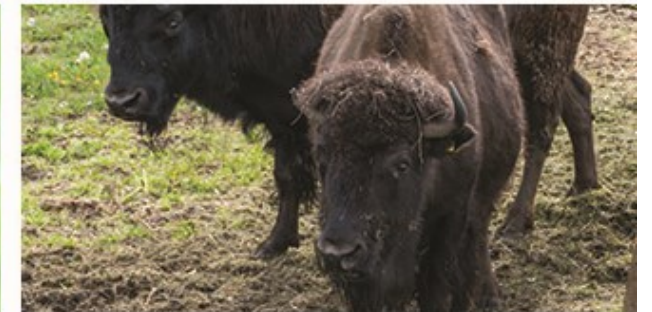


Proposed Bylaw 23-2021 Responsible Livestock Ownership

Council presentation
June 15, 2021

Draft bylaw overview

1. Things that were not changed
2. Bylaw Modernization
3. New Inclusions
4. Examples
5. Next Steps



Unchanged details

- In land use districts where “agriculture, general” is a permitted use, the number or/and type of livestock is out of scope of this bylaw (governed by provincial legislation)
- Permit for apiculture in rural subdivisions is required
- Encouraging residents to be involved with agriculture through livestock ownership
- Permanent urban livestock will not be permitted



Bylaw modernization

- Updated land use districts to reflect current Land Use Bylaw and the associated livestock units per acre based on land use district purpose and property size.
- The inclusion of an appeal process for permitting.
- The keeping of wild boar and genetic derivatives will be restricted to only those who currently meet the provincial containment standards as approved by the province. No new wild boar farms will be allowed.
- An expanded fees and charges schedule for infractions of bylaw has been developed.

Livestock allowances

| Land use district | Property size | Category |
|--|---|----------|
| Medium Density Country Residential (RCM) and | 2 acres (0.8 hectares) or larger but less than 3 acres (1.2 hectares) | A |
| Low Density Country Residential (RCL) | 3 acres (1.2 hectares) or greater | B |
| Small Holdings (RS) | Less than 10 acres (4 hectares) | B |
| | Greater than 10 acres (4 hectares) | C |
| Rural Residential / Agriculture (RA) | Less than 20 acres (8 hectares) | C |

| | |
|------------|--|
| A Category | 12 units |
| B Category | 12 units / acre (0.4 hectare) Minimum 3 acres (1.2 hectare) parcel Can be broken into 0.25 acre (0.1 hectare) increments |
| C Category | 12 units / acre (0.4 hectare) Minimum 3 acres (1.2 hectare) parcel Can be broken into 0.25 acre (0.1 hectare) increments |

Livestock types

| Category B Livestock type | Units/animal |
|--|--------------|
| Horse / mule | 12 |
| Llama | 12 |
| Swine | 12 |
| Cattle (not including bulls) | 12 |
| Sheep / Goat / alpaca | 4 |
| Rabbit | 1 |
| Chicken / pheasant / quail / pigeon | 1 |
| Turkey / duck | 2 |
| Geese | 6 |
| Limits (loud animals) | |
| Donkey: 12 units per donkey maximum one per 5 acres (2 hectares) increments | |
| Rooster: 1 unit per rooster maximum one per 5 acres (2 hectares) increments | |
| Guinea fowl / peafowl: 2 units per bird maximum two per 5 acres (2 hectares) increments | |

| Category A Livestock type | Units/animal |
|-------------------------------------|--------------|
| Rabbit | 1 |
| Chicken / pheasant / quail / pigeon | 1 |
| Turkey / duck | 2 |

| Category C Livestock type | Units/animal |
|--|--------------|
| Bison (adult) / bull (bovine) | 24 |
| Horse / mule / cattle (not including bulls) / donkey | 12 |
| Llama | 12 |
| Swine | 12 |
| Sheep / Goat / alpaca | 4 |
| Rabbit | 1 |
| Chicken / pheasant / quail / rooster | 1 |
| Turkey / duck / guinea fowl / peafowl | 2 |
| Geese | 6 |

New distinctions

- Inclusions of honeybees and hive limit within rural subdivisions
- The addition of a temporary permit for areas where livestock are not allowed
- Expectations for all livestock owners regarding manure management and environmental responsibilities
- All permits will now require livestock management plans
- The inclusion of a new livestock inspection officer



Care of livestock section

- Pasture management to prevent overgrazing
- Prevention of manure runoff to adjacent properties, water sources, and environmentally sensitive areas
- Livestock containment for safety of public and animals
- Animal wellness consideration for:
 - Space requirements
 - Disease management
 - Predation control

Example: Low Density Country Residential (RCL)

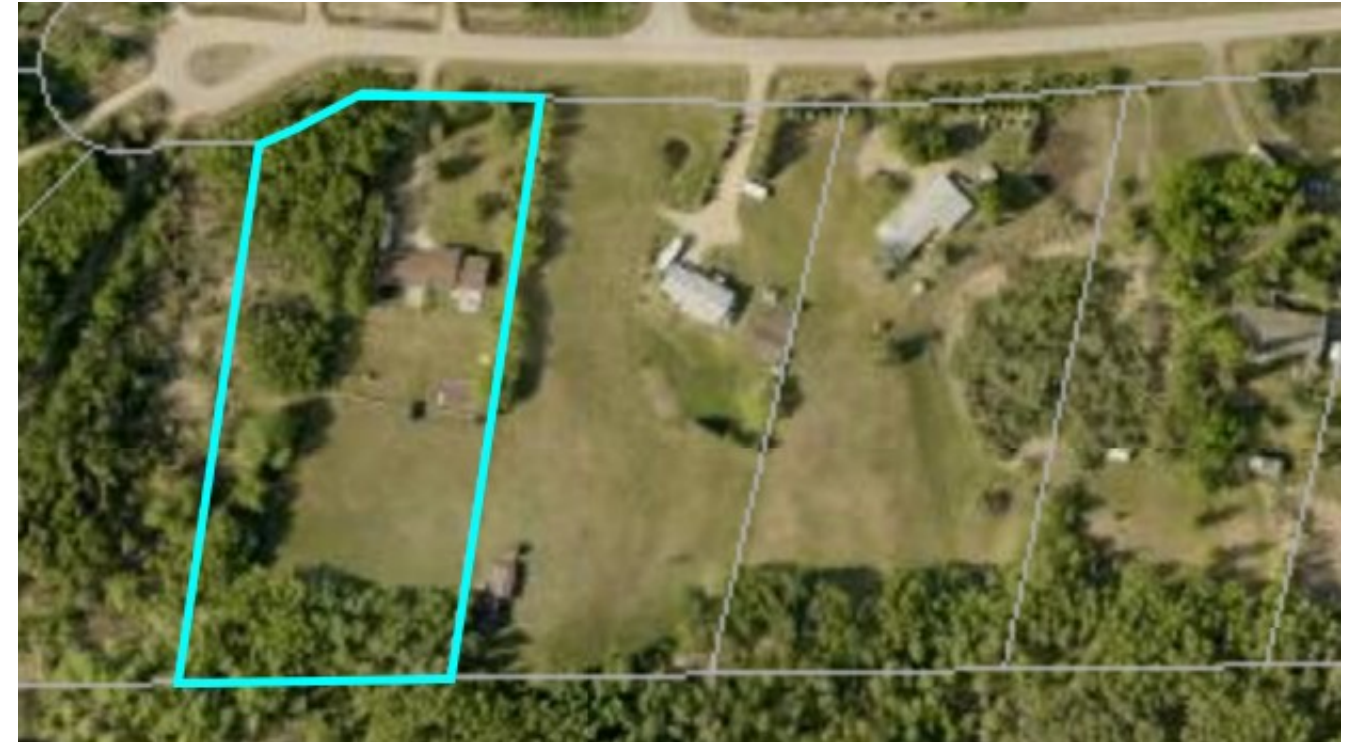
- 0.8 hectares (2.0 acres)
- Category A
 - 12 livestock units (LU)



| Example 1 | Example 2 | Example 3 |
|--------------------|----------------|--|
| 12 chickens (12LU) | 6 ducks (12LU) | 4 rabbits (4LU) 6 chickens (6LU) 2 quail (2LU) |

Example: Low Density Country Residential (RCL)

- 1.2 hectares (3.0 acres)
- Category B
 - 12 livestock units (LU) per 0.4 hectare (1 acre)
 - 12LU x 3 acres = 36LU



| Example 1 | Example 2 | Example 3 |
|---|-----------------|----------------------------------|
| 19 chickens (19LU) 1 rooster (1LU) 4 alpacas (16LU) | 3 horses (36LU) | 2 swine (24LU) 6 ducks (12LU) |

Next steps

- A program to support this bylaw will be developed after Council approval
 - Customer service resources
 - Education and communications programming to connect residents to resources
 - Transition plans for changes within the bylaw
- This bylaw will come effect January 1, 2022.