

Dogs In Our Community

Neighborhood Dog Off-Leash Update

Priorities Committee Meeting

June 8, 2021

Neighborhood Dog Off-Leash Areas

- Council requested administration prepare a report for consideration of potential sites for neighbourhood off-leash dog parks in Strathcona County.



Recreation and Culture Strategy

Community needs

- Identify the community need
- Prioritize the community need
 - Outdoor Implementation Plan
- Investigate the feasibility of the identified need in order to serve the needs of the community



Dog Off-Leash History

Dog off-leash areas prior to 2018

	Opened
Deermound	
Sherwood Heights outdoor rink	2015
McGhan outdoor rink	2016
Kinsmen/Westboro outdoor rink	2016
Heritage Hills diamond and outdoor rink	2016
Emerald Hills diamond	2017

Dog off-leash areas added since 2018

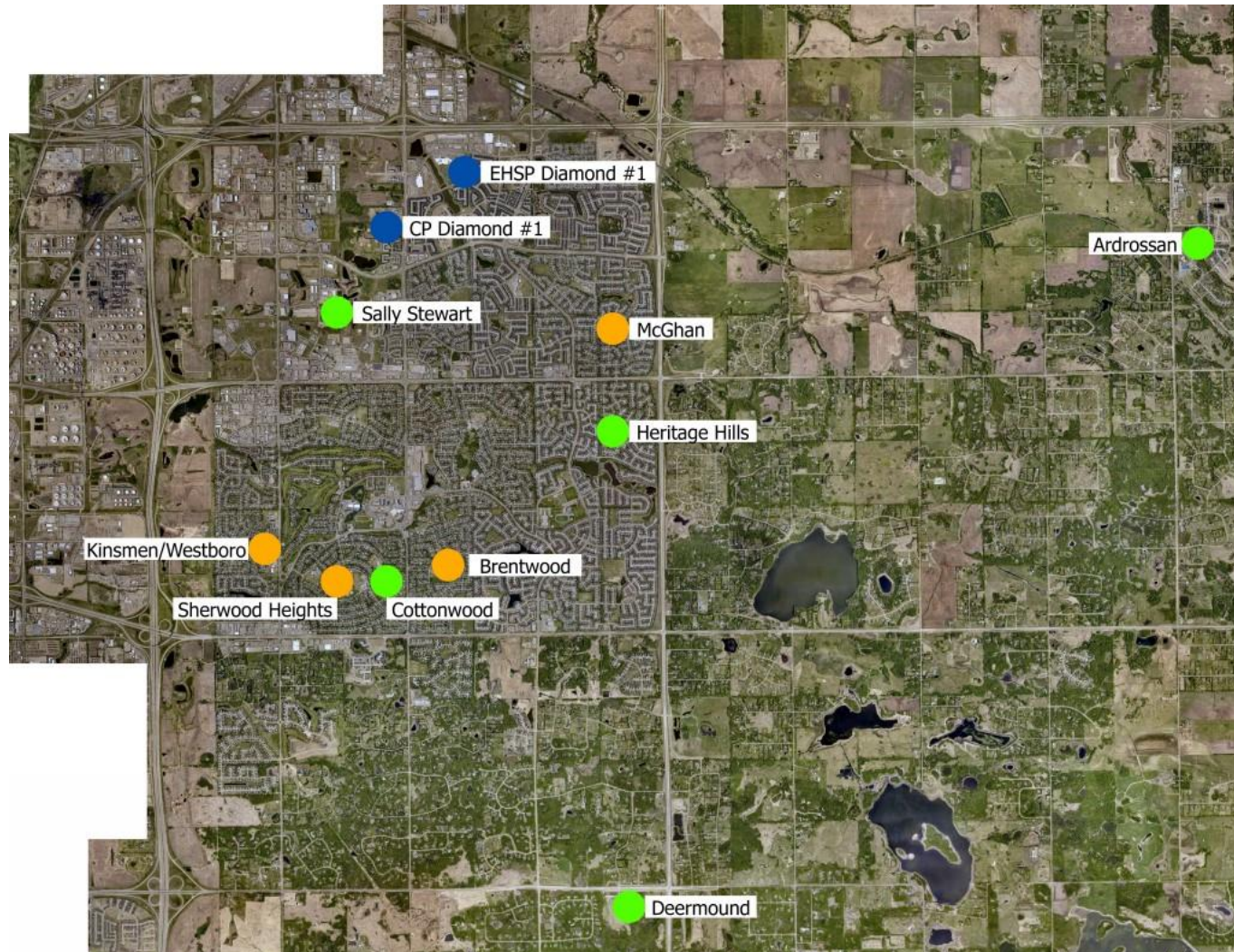
	Opened
Sally Stewart Dog Off-Leash Area	2018
Ardrossan Dog Off-Leash Area	2019
Heritage Hills Dog Off-Leash Area	2019 (permanent 2020)
Cottonwood Dog off-leash Area	2020
Centennial Park ball diamond	2020
Brentwood outdoor rink	2020

Summary of Dog Off-Leash Areas

	Total dog off-leash areas prior to 2018	Number of dog off-leash areas added since 2018	Total dog off-leash areas currently in 2021
Year round	1	4	5
Seasonal, summer off-leash	4	1 (Brentwood outdoor rink)	4
Seasonal, winter off-leash	2	1 (Centennial Park)	2

Note: Heritage Hills, prior to 2018, had a diamond and outdoor rink off-leash area which was transitioned to a year-round off-leash location once the school was under construction.

2021 Map of Dog Off-Leash Sites



- Blue Dot
 - Seasonal winter off-leash (2)
- Green Dot
 - Year round off-leash (5)
- Orange Dot
 - Seasonal summer off-leash (4)

Municipal Comparison

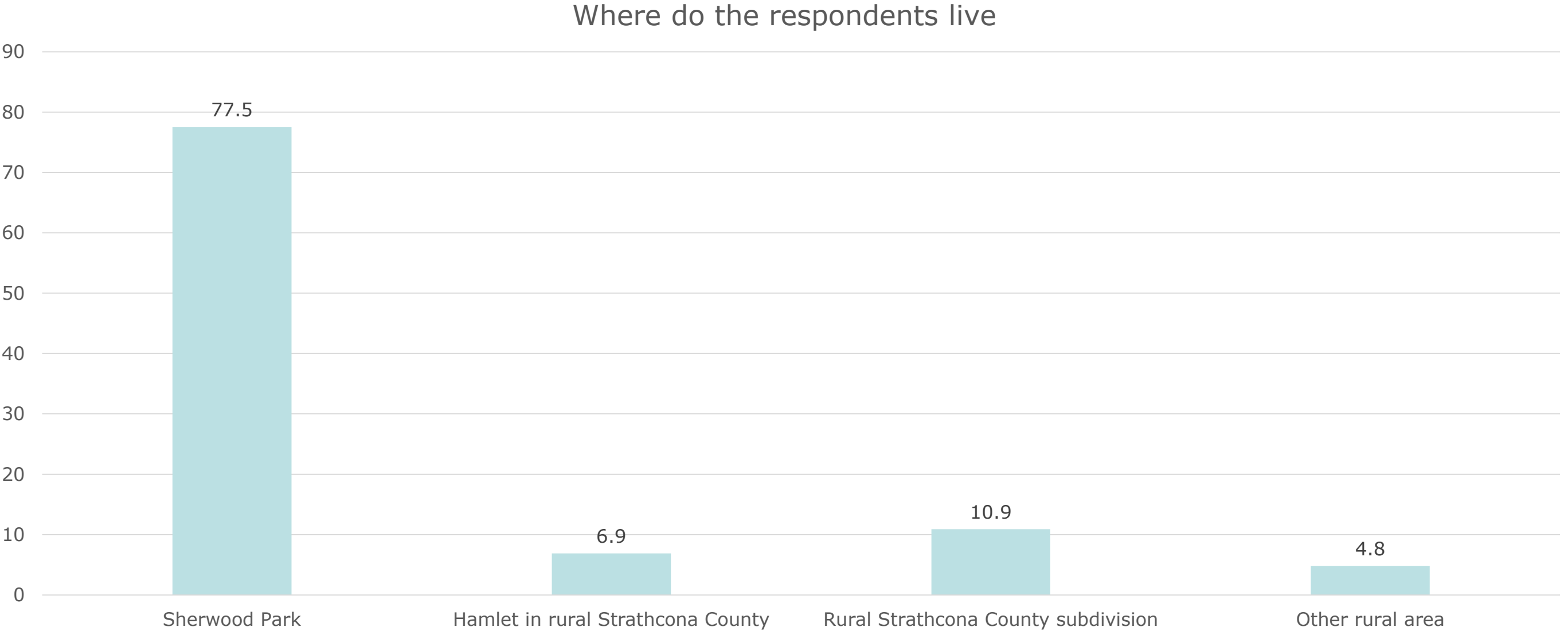
City	Population	Neighbourhood off-leash sites	Destination off-leash sites
Strathcona County	98,044	6	5
Edmonton	981,280	40+	5
Red Deer	103,588	0	2
St. Albert	65,589	18 (shared greenspaces, not fenced) 9 (boarded rinks - summer)	2
Spruce Grove	34,066	0	2
City of Leduc	29,993	0	2
Fort Saskatchewan	26,942	0	1
Stony Plain	17,189	0	1

2021 Dog Off-Leash Survey

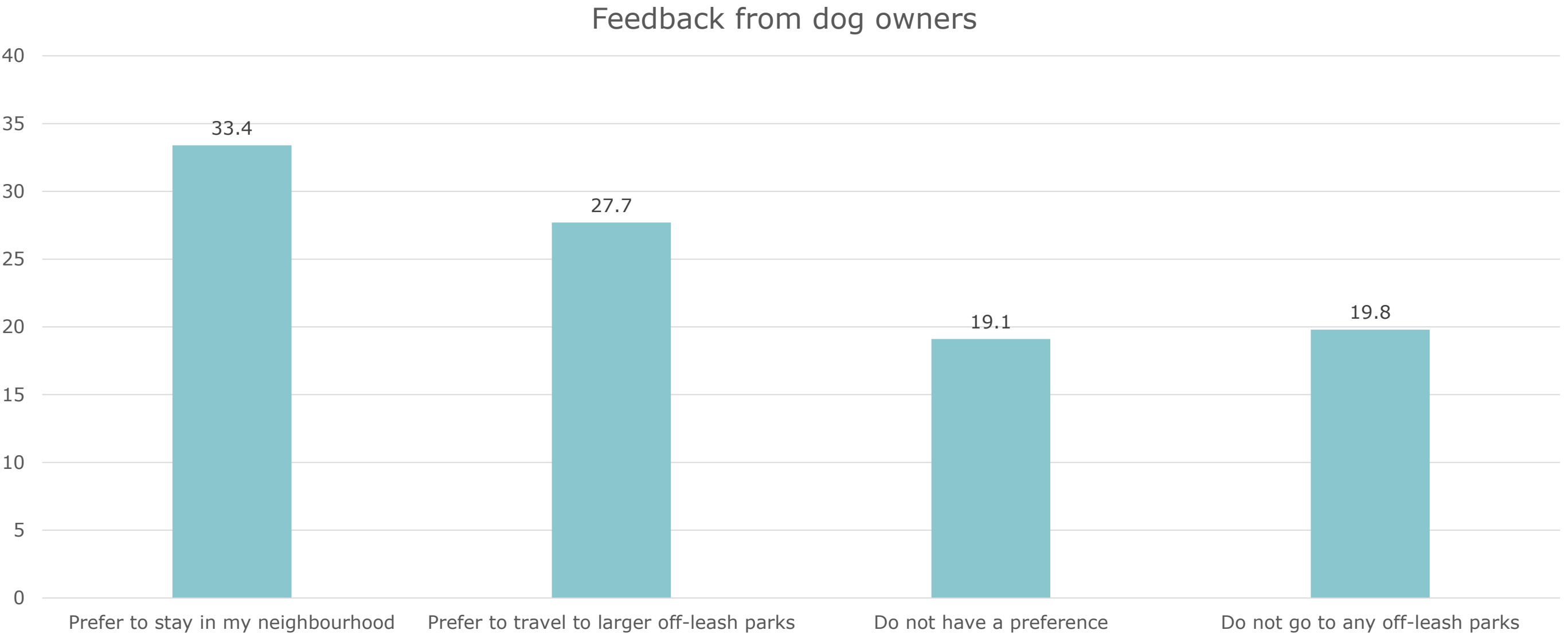


- Survey conducted March 19–28, 2021
- Future off-leash neighbourhood dog park options considered the needs and responsibilities of dog owners and input from non-dog owners.
- Total respondents: 1,372 people
 - 64.9% of respondents owned at least one dog, while the remaining 35.1% did not.

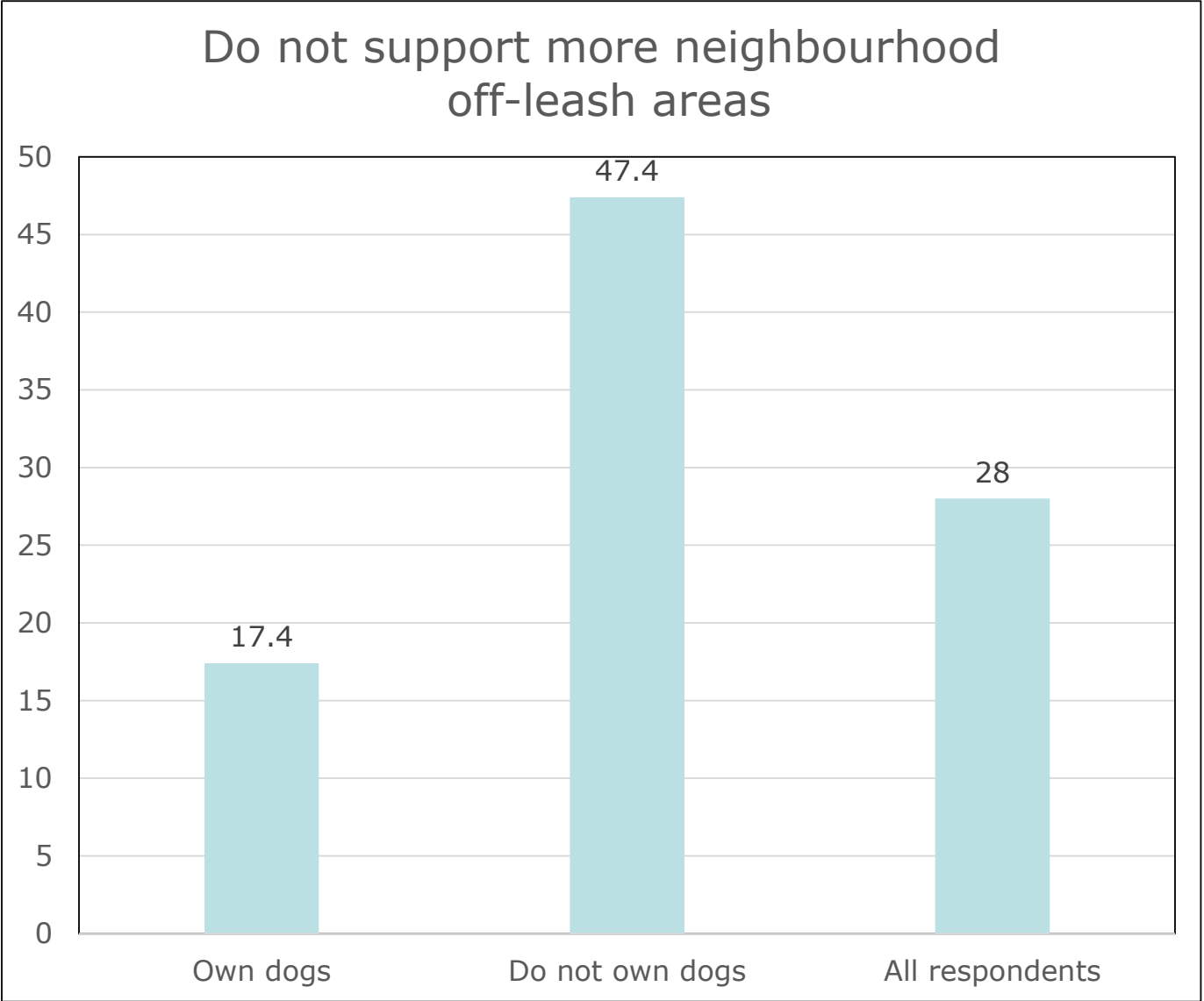
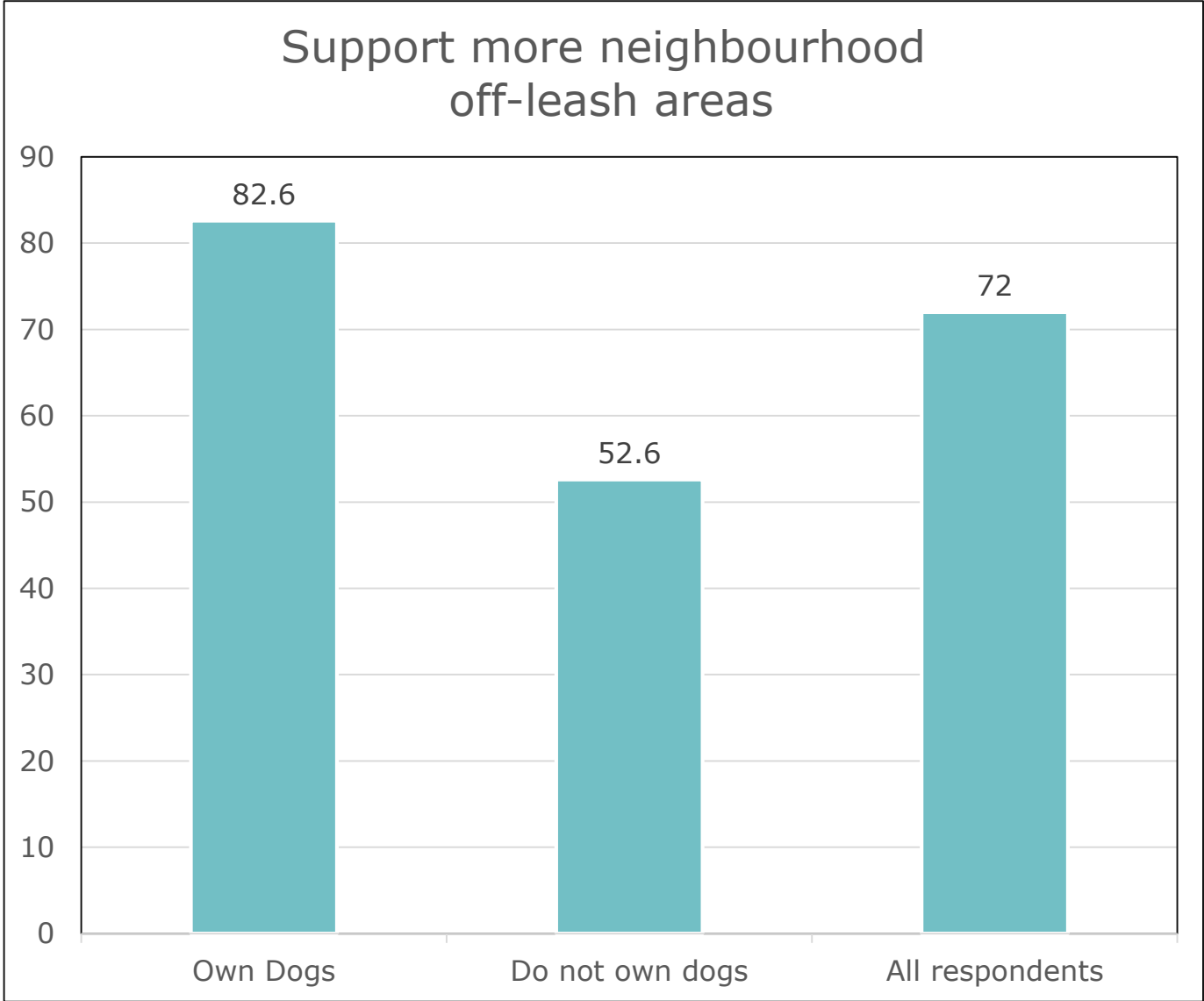
What We Heard: Location of Respondents



What We Heard: Type of Dog Off-Leash Park

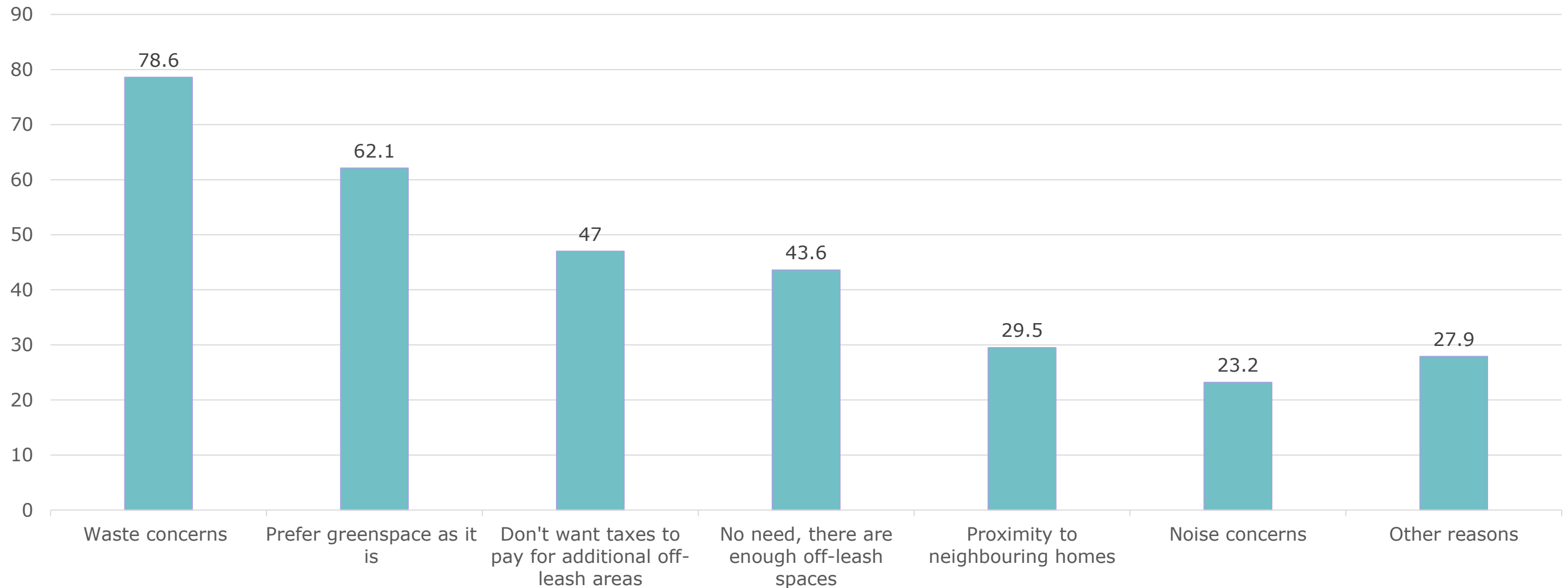


What We Heard: For or Against a Neighbourhood Off-Leash Area



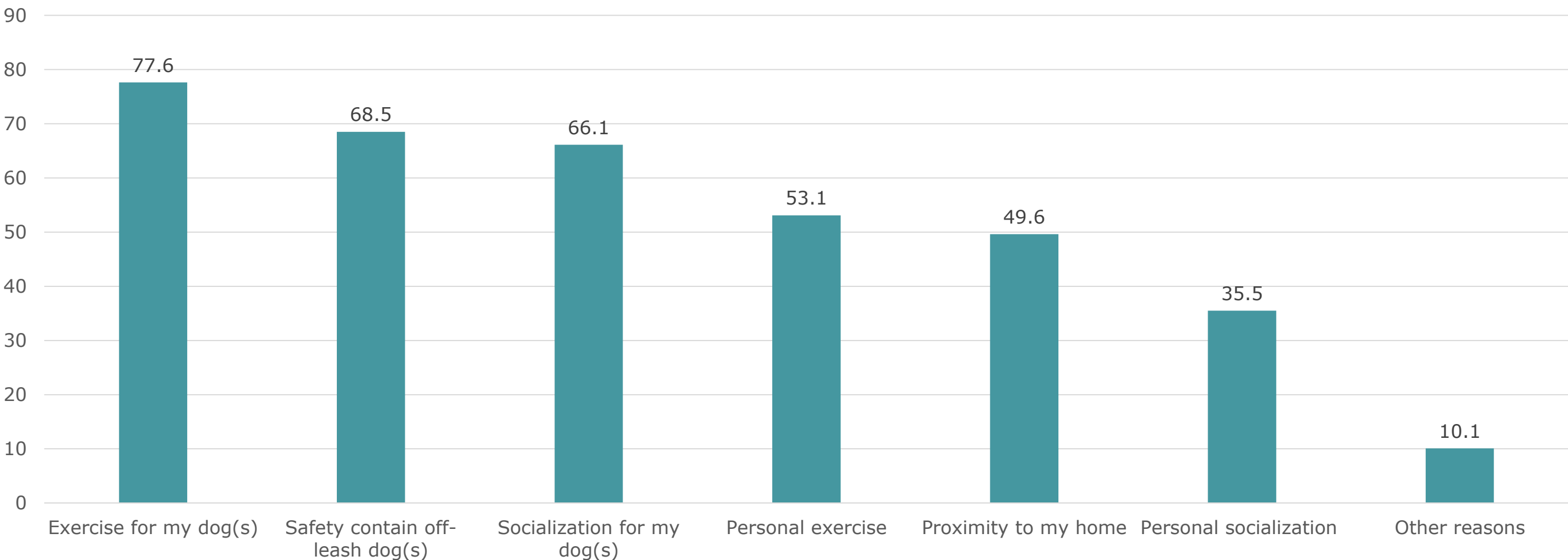
What We Heard: Reasons For Not Wanting a New Off-Leash Area

Combined responses

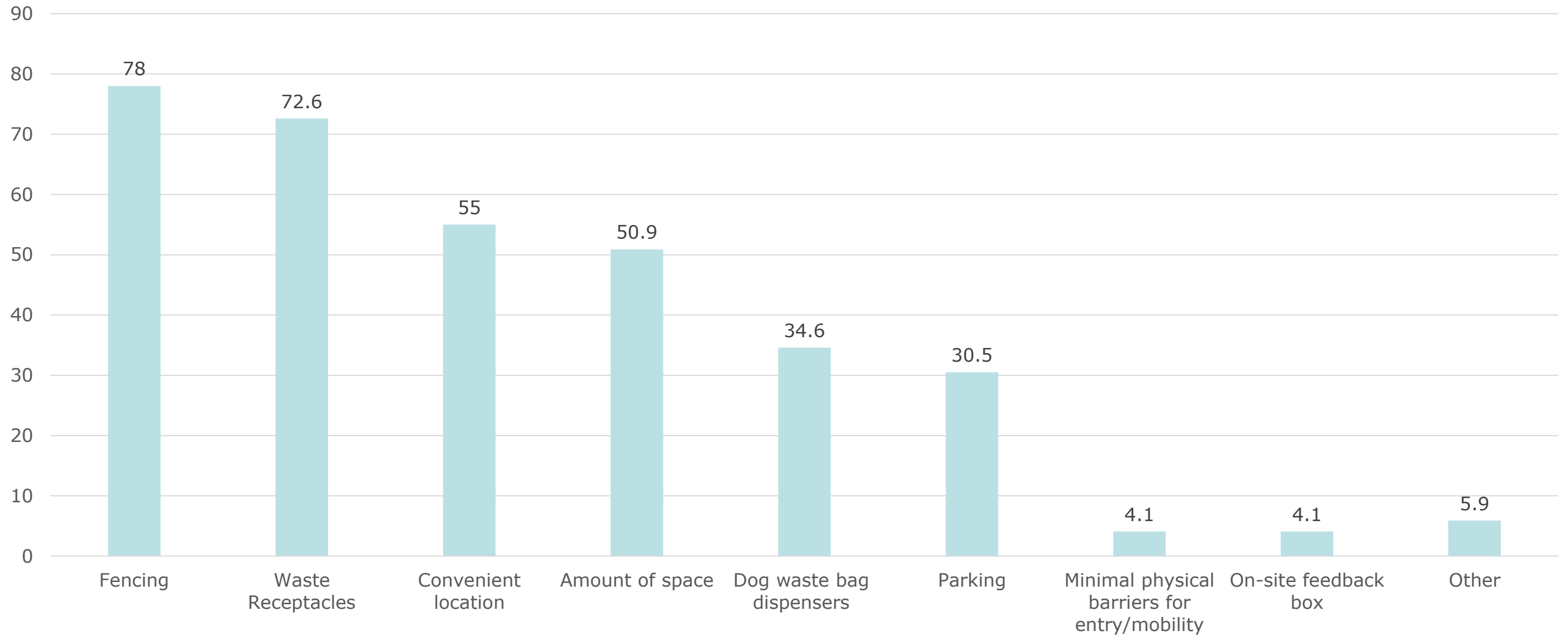


What We Heard: Importance of Dog Off-Leash Areas

Combined feedback from those who support a new neighbourhood off-leash greenspace



What We Heard: Important Features



Considerations for Park and Open Space

- Programming opportunities in our parks and open space
- Site criteria includes:
 1. Proximity to existing recreation and park facilities
 2. Geographical location and size of the park
 3. Parking availability
 4. Access to the site
 5. Environmental impacts
 6. Visibility from the road
 7. Noise for adjacent residents



Neighborhood Dog Parks

- Neighborhood dog parks include both year-round and seasonal areas
- Standard size of neighborhood dog park off-leash area is 2,150 square metres.
 - A seasonal off-leash diamond is 6,500 square metres
 - A seasonal off-leash outdoor rink is 1,500 square metres
 - Deermound small off-leash area is 2,955 square metres



Proposed Sites

- **Year-round pilot off-leash (temporary fencing)**

1. Malvern Park
2. Old Wye School site in Wyeclyff
3. Clover Bar Ranch
4. South Cooking Lake

- **Seasonal winter additions**

1. Millshaven outdoor rink
2. Josephburg greenspace
3. Strathcona Athletic Park greenspace

Summary of dog off-leash areas, including proposed sites

	Total dog off-leash areas prior to 2018	Total dog off-leash areas 2018-2021	Total dog off-leash areas, including proposed sites 2021
Year-round	1	5	9
Seasonal, summer off-leash	4	4	5
Seasonal, winter off-leash	2	2	4

Proposed Sites Budget

Budget:

- Year-round, temporary fenced dog off-leash site is approximately \$12,000 for fencing, supportive amenities and maintenance costs.
 - Supportive amenities, including picnic table, garbage receptacle, signage, doggie poop bags and bag dispenser
- Year-round, permanent fenced dog off-leash site is \$45,000 for fencing, supportive amenities and additional maintenance costs.
 - Permanent supportive amenities, including double gate, signage, garbage receptacle, seating areas, doggie poop bags and bag dispenser

Next Steps

- Resident notification on the proposed neighborhood dog off-leash area (2-4 weeks)
- Implementation options:
 - Reprioritize projects to implement in August 2021
 - Add to the 2022 budget process for consideration
- Administration will continue to look at future destination dog off-leash locations and add costs to the open space capital plan

Questions?

