

# COVID-19 Status and Community Update

Priorities Committee Meeting  
June 8, 2021

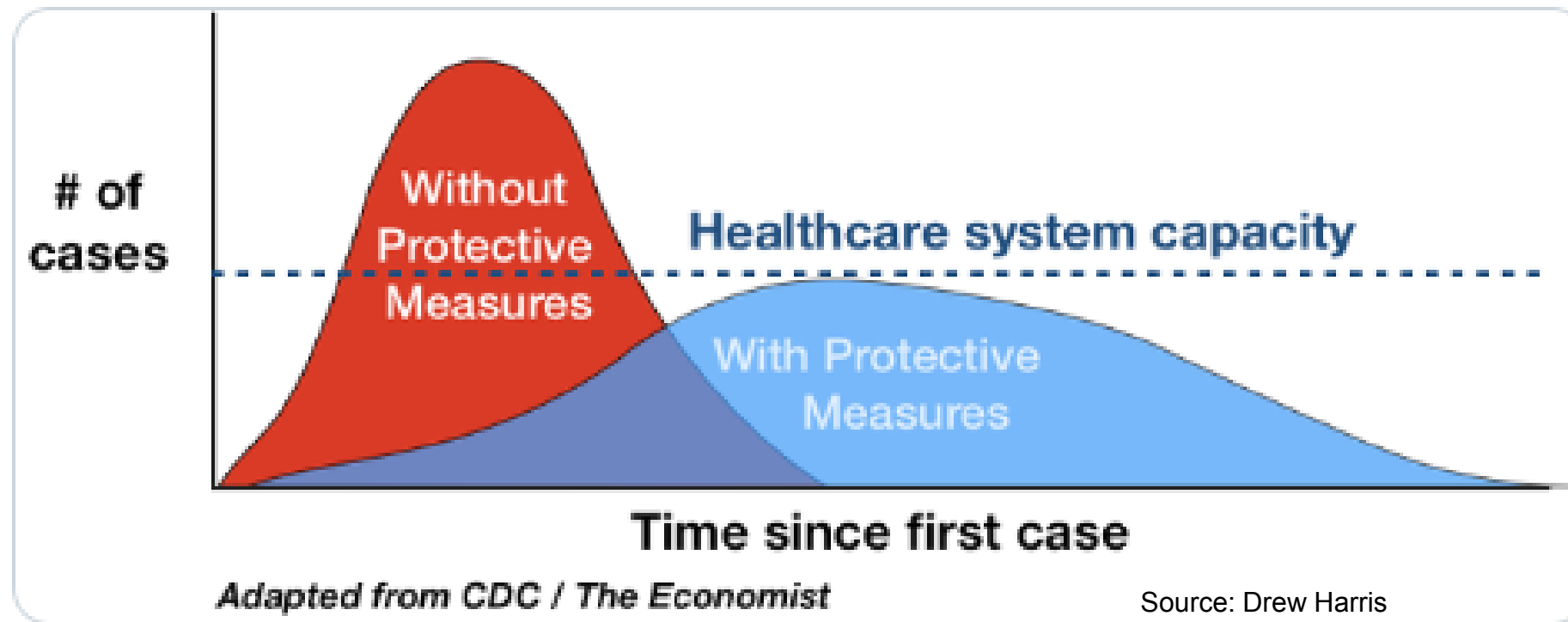
# Agenda

- COVID-19 Update
  - Community
  - Open for Summer Plan
- Recreation status and service impacts
- Community Supports
- Communications

# Approach

Important to remember that COVID-19 pandemic control measures may only delay cases, not prevent.

However, this may limit surge and gives hospitals time to prepare and manage.



# Alberta Health

- June 1, 2021 the County entered Stage 1 of the *Open for Summer Plan*

June 6, 2021	Alberta
Total cases	229,319
Active cases	4,707
Recovered cases	222,364
Deaths	2,248



June 6, 2021	Sherwood Park**	Rural Strathcona County**	Total
Cases	2737	861	3,598
Active*	49	17	66
Recovered	2654	838	3,492
Deaths	34	6	40

\*Please note the row titles in the Alberta and Local table are not identical.

\*\*As defined by Alberta Health

# Vaccine Benchmark Stats

June 6, 2021	Eligible Albertans
1 <sup>st</sup> dose	<b>66.7%</b>
Fully vaccinated	<b>14.3%</b>



June 6, 2021	Sherwood Park*	Fully Vaccinated	Strathcona County*	Fully Vaccinated
Ages 75+	92.7%	87.1%	85.2%	74.5%
Ages 60-74	88.5%	32.2%	82.3%	24.3%
Ages 40-59	79%	9.4%	70.1%	7.6%
Ages 20-39	66.3%	6.7%	55.8%	5.6%
Ages 12-19	68.1%	0.8%	53.2%	0.9%
12+	<b>77.5%</b>	<b>18.5%</b>	<b>68.5%</b>	<b>14.1%</b>
All ages	<b>67.4%</b>	<b>16%</b>	<b>60.7%</b>	<b>12.5%</b>

\*As defined by Alberta Health

# Open for Summer Plan

## ✓ Stage 1:

- ✓ June 1<sup>st</sup>
- ✓ 50% Vaccinated
- ✓ <800 hospitalized and declining

- Places of worship – 15% of fire code occupancy (effective May 28)
- Outdoor social gatherings – up to 10 people (indoor social gatherings still not permitted)
- Outdoor physical, performance and recreation activities – up to 10 distanced people, all ages
- Personal and wellness services – re-open, by appointment only
- Funeral services – up to 20 people, not including facility staff, funeral clergy or organizers not considered guests (receptions remain prohibited)
- Wedding ceremonies – up to 10 people, including officiant, bride/groom, witnesses (receptions remain prohibited)
- Restaurants – 4 people per table max, outdoors, households only or 2 close contact for those living alone
- Retail – 15% of fire code occupancy (must maintain ability to distance)
- Distancing and masking requirements remain in effect

# Open for Summer Plan

## • Stage 2:

- June 10<sup>th</sup>
- ✓ 60% Vaccinated
- ✓ <500 hospitalized and declining

- Outdoor social gatherings – up to 20 people with distancing (indoor social gatherings still not permitted)
- Indoor recreation, entertainment and other settings (rec centres, arenas, casinos, cinemas, theatres, museums, galleries, libraries, etc.) – open at 1/3 of fire code occupancy
- Gyms and fitness studios – open for solo and drop-in activities and indoor fitness classes with 3 metre distancing
- Funeral services – up to 20 people, indoors and outdoors (receptions permitted outdoors only)
- Wedding ceremonies – up to 20 people, indoors and outdoors (receptions permitted outdoors only)
- Places of worship – 1/3 of fire code occupancy
- Personal and wellness services – resume walk-in service
- Post-secondary – resume in-person learning
- Restaurants – 6 people per table max, indoors or outdoors
- Retail – 1/3 of fire code occupancy (must maintain ability to distance)
- Youth activities (day camps, overnight camps, play centres) – resume with restrictions
- Youth and adult sports – resume with no restrictions, indoors and outdoors
- Outdoor public gatherings (concerts/festivals) – up to 150 people
- Outdoor fixed seating facilities (grandstands) – 1/3 seated capacity
- Work from home order is lifted but still recommended
- Distancing and masking requirements remain in effect

# Open for Summer Plan

- Stage 3:

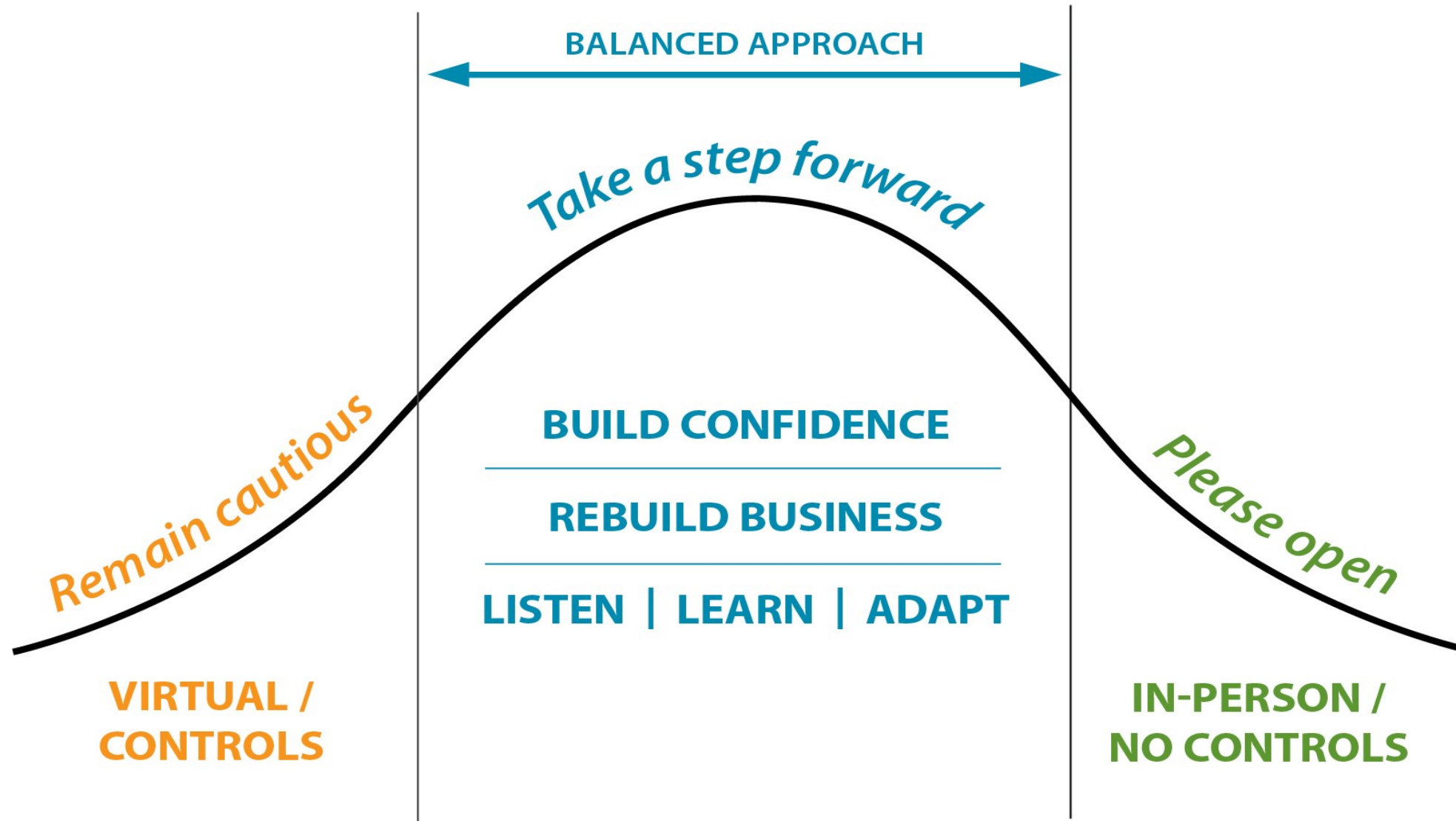
- Effective two weeks after 70% of eligible population has received at least one dose

- All restrictions lifted, including ban on indoor social gatherings
- Isolation requirements for confirmed cases of COVID-19 and some protective measures in continuing care settings remain



# Recreation, Parks and Culture

## A balanced approach to reopening

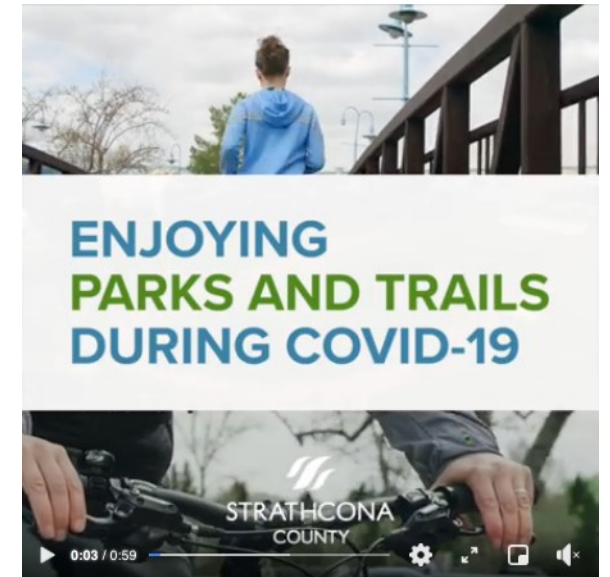


# Recreation, Parks and Culture

## Currently available (Stage 1)

- Playgrounds, trails, parks, off-leash dog parks
- Skate and BMX bike parks – new location in Ardrossan
- Up to 10 physically distanced people of all ages
  - Outdoor courts (pickleball, tennis, volleyball and basketball courts)
  - Outdoor programs and spaces – SWC (disc golf, geocaching etc.), fitness
  - Field and diamond users - youth and adult sports resume with restrictions
  - Family (household) programs at Smeltzer site

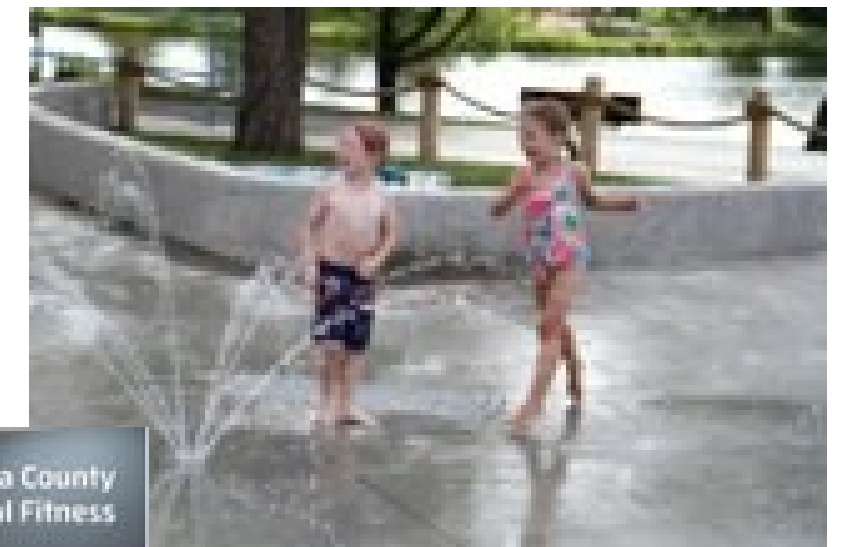
**Distancing and masking requirements stay in effect**



# Recreation, Parks and Culture

## Currently available (Stage 1)

- Spray deck and spray parks (capacity limits)
- Virtual programming and gallery exhibits
- Active Schools – Arbor Day, Choosewell Challenge
- Supports for community groups
- SWC extended hours to 9 p.m. for trail use and disc golf
- Broadmoor Public Golf Course – driving range, patio and course play



**Distancing and masking requirements stay in effect**



# Recreation, Parks and Culture

## Stage 2: June 10

### Some indoor recreation reopens June 10

- Arenas – GARC, MP (figure skating/hockey camps)
- Dry surface – Sherwood Park Arena/Sports Centre, Broadmoor, ARC, SOC, MRC
- MP gymnasium - bookings for groups
- Activity bookings - GARC courts, MP wellness
- Gallery @501 exhibits

**Distancing and masking requirements stay in effect**



Thank you for your cooperation.  
Guests who do not follow these guidelines  
may be asked to leave the Wellness Centre.  
[strathcona.ca/covid19](https://strathcona.ca/covid19)



# Recreation, Parks and Culture

## Stage 2: June 10

### **Indoor recreation reopens June 14**

- Wellness – ARC, MP, GARC – activity bookings (early launch June 10 at MP only)
- Gymnasium – MP (TBA)
- Swimming – lap swim, walking, fitness classes (lessons planned for summer)
- Festival Place bookings (based on capacity limits – June 16)

**Distancing and masking requirements stay in effect**

# Recreation, Parks and Culture

## Stage 2: June 10



### Outdoor Recreation

- Field, diamond, court users and spray parks - youth and adult sports resume without restrictions
- Outdoor public gatherings – concerts/festivals up to 150 people
  - Canada Day – ex. Ninja Warrior, Food Trucks with live local entertainment, fitness classes, Public Art Bike Tour, SWC Disc Golf, Broadmoor Public Golf Course Clinic, scavenger hunt, drive through pancake breakfast (note: no fireworks)
  - FREE PlayDays – 3 summer events and summer rec days at Emerald Hills Sports Pavilion
  - Qualico Patio Series on July 1 kick-off

**Distancing and reduced masking requirements in effect**





# Recreation, Parks and Culture

## Stage 2: June 10

### Outdoor Recreation

- Summer programs – planned ½ day camps for preschool, child/youth, SWC, performing and visual arts
- Outdoor fixed seating facilities/grandstands
  - 1/3 seating capacity
    - Movie in the Park weekend – Emerald Hills Sports Pavilion
- Clubhouse – indoor food service at Broadmoor Golf Course with limited capacity (6 people /table)



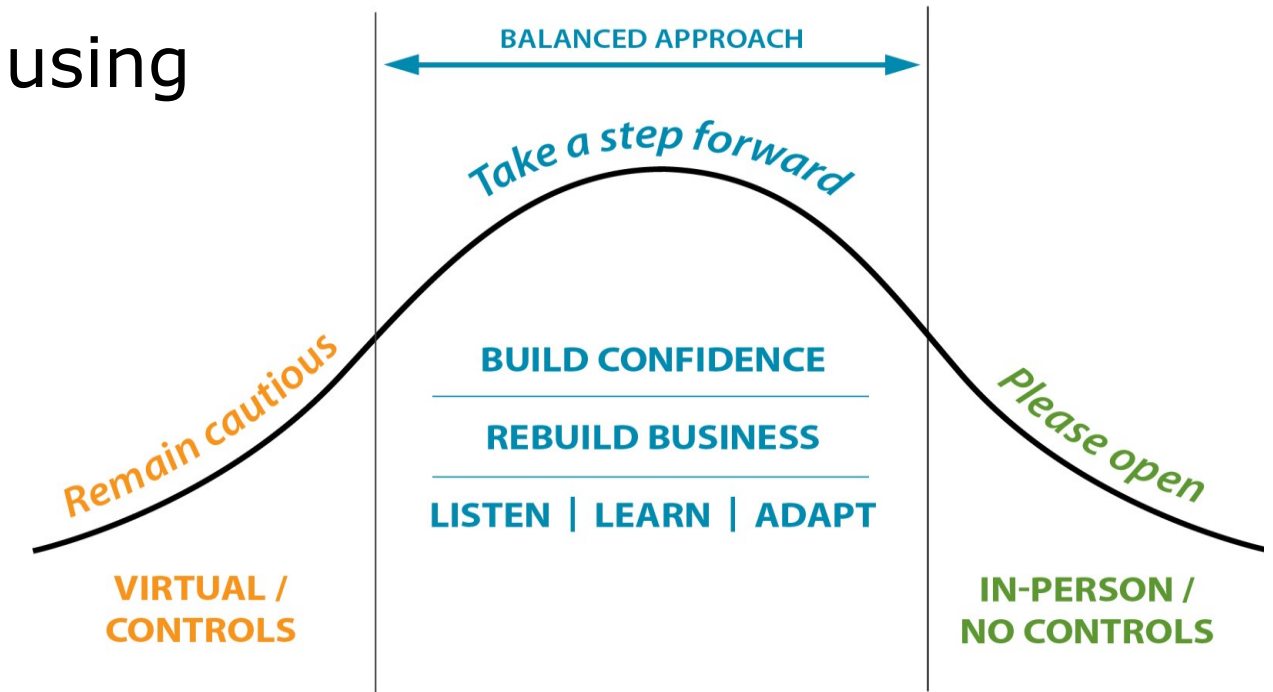
**Distancing and reduced masking requirements  
in effect**

# Recreation, Parks and Culture

## Stage 3: Effective 2 weeks after 70% vaccinated

### All restrictions lifted

- Working on a plan to reintroduce services using balanced approach
  - Reintroduce services based on changes in community need
  - Canada Day – fireworks
  - Festival Place performances – outdoor performances until Fall with indoor performances starting September
  - Indoor amenity capacity map to ensure consistency with our safety measures and supporting people with different levels of comfort as we move to fully reintroduce indoor services





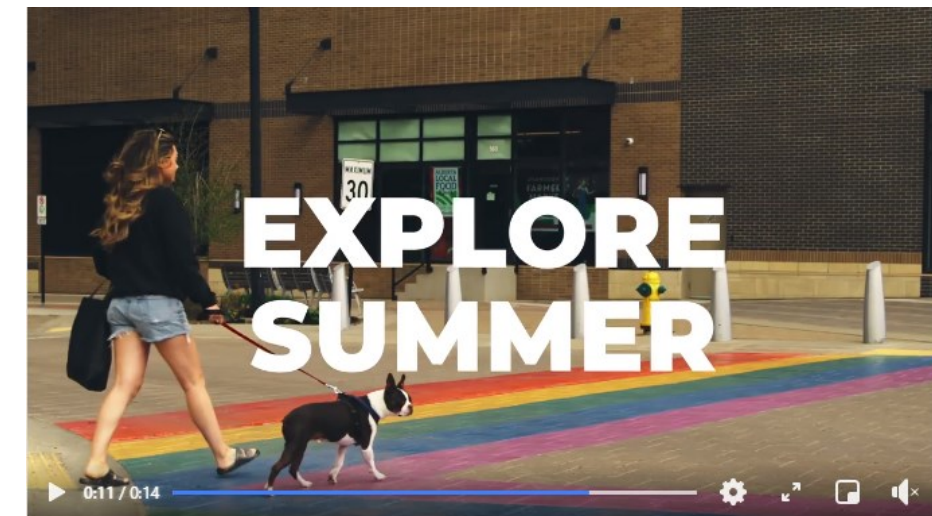
# Family and Community Services

- **Emergency Social Services:** Plans in place if activation required
- **Services continue on-line, by-phone and outreach**
  - 1359 calls over 12 week period (Mar 16 to June 6, 2021)
- **Recovery Vignettes: 11 videos**
  - Total Reach: 505,051
  - Total Engagement: 21,069
  - Total Link Clicks: 3,783
- **Psychological First Aid:** 27 sessions to 380 participants
- **Community Safety and Well-Being**
  - Thinking in new ways to address complex social issues

# Recent Communications

## Residents and businesses:

- Explore summer video ads 1 and 2 of 3 that highlight outdoor activities in rural and urban Strathcona County and Sherwood Park, and supporting local businesses
- Staff working safely campaign
- Vaccination/"It's up to you" campaign
- Sharing County re-opening plans with residents and businesses for Stage 1 of provincial "Open for Summer" plan



# Recent Communications

## Residents and businesses:

- Sharing provincial programs and information about creating jobs, business grants, restrictions, vaccines, situations
- Sharing outdoor trails safely video messaging

## Staff:

- Health and safety protocol messaging shared via departments, the Insider and emails
- Worksite check-ins continuing and remain mandatory
- Staff safety messaging shared via email and the Insider
- Updates on restrictions and guidelines sent via departments and all staff emails



# Upcoming Communications

## County communications with residents:

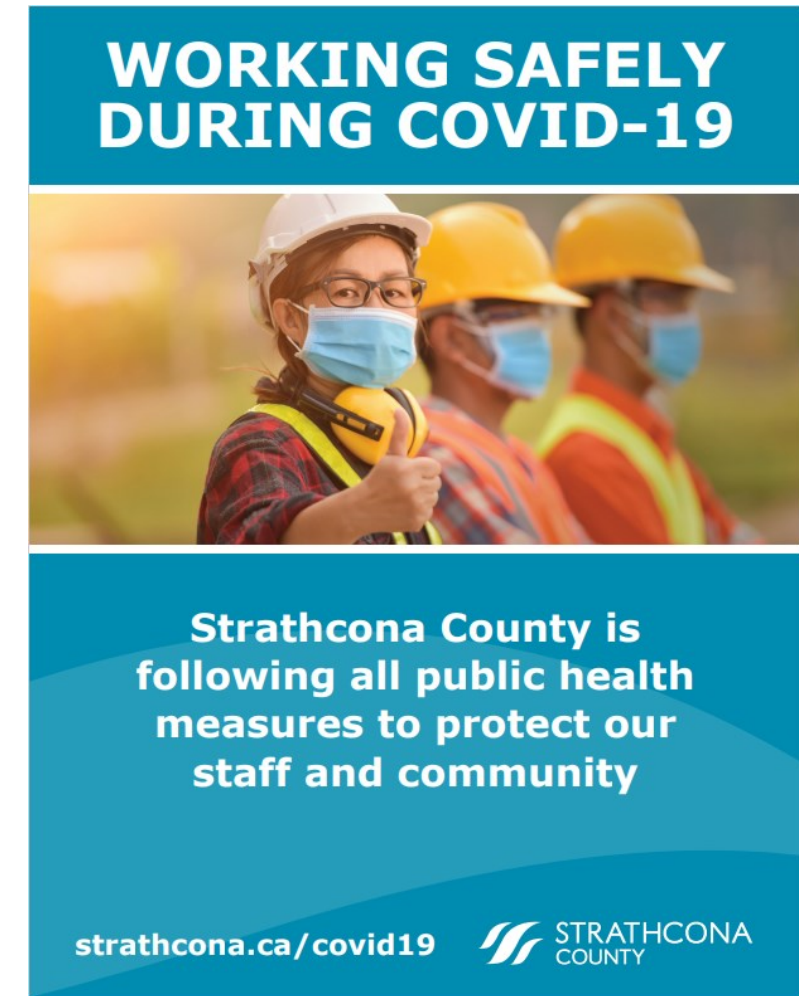
- Explore summer ad 3, focusing on a Strathcona County staycation that highlights local tourism activities
- Mental health campaign with targeted designs for teens, adults in earlier life stages, adults with children and/or older parents, and seniors





# Upcoming Communications

- Re-opening videos highlighting staff and facility prep for provincial stages
- Messaging supporting residents and community return to normal activities
- Re-opening plans for stages 2 and 3 of provincial "Open for Summer" plan shared via social media, web, info release and RPC partners



# Upcoming Communications

## **For businesses:**

- Online seminars to support businesses adapting to pandemic challenges
- Supporting local and local tourism campaigns and messages
- Weekend itineraries highlighting local businesses and activities

## **For Staff:**

- Reviewing workspace and non-medical mask use, enhanced cleaning protocols and additional impacts due to "Open for Summer" plans, and what that looks like during and after stage 3
- Associate Commissioners' town hall end of June

# Upcoming Communications

## **Returning to normal activities**

- Communications and RPC collaborated to create a short video titled "Community Comeback" to coincide with reopening of our recreation and culture spaces
- The video provides an exciting preview of the deliberate and thoughtful work Strathcona County staff are doing to safely re-open our facilities and spaces through the Province's three-stage "Open for Summer" plan
- The video will launch today alongside the County's stage two plan info release and will be showcased on all County social and web channels

<https://youtu.be/XebZwemn9a8>