

Strathcona County's Strategy for Next Gen



strathcona
county
next gen

STRATHCONA COUNTY NEXT GEN INITIATIVE



STRATHCONA COUNTY'S STRATEGY FOR NEXT GEN

FUNCTIONS

- PROVIDES STRATEGIC DIRECTION
- ARTICULATES COMMUNITY PRINCIPLES
- CREATES A COMMON LANGUAGE

CO-CHAIR SUPPORT TEAM (BGC, BBBS, HEARTLAND ALLIANCE)

FUNCTIONS

- STRATEGIC PLANNING
- STRATEGY OPERATIONALIZATION
- UPHOLDING PROJECT PRINCIPLES
- ALIGNMENT OF PROJECT PRIORITIES

BACK BONE SUPPORT TEAM

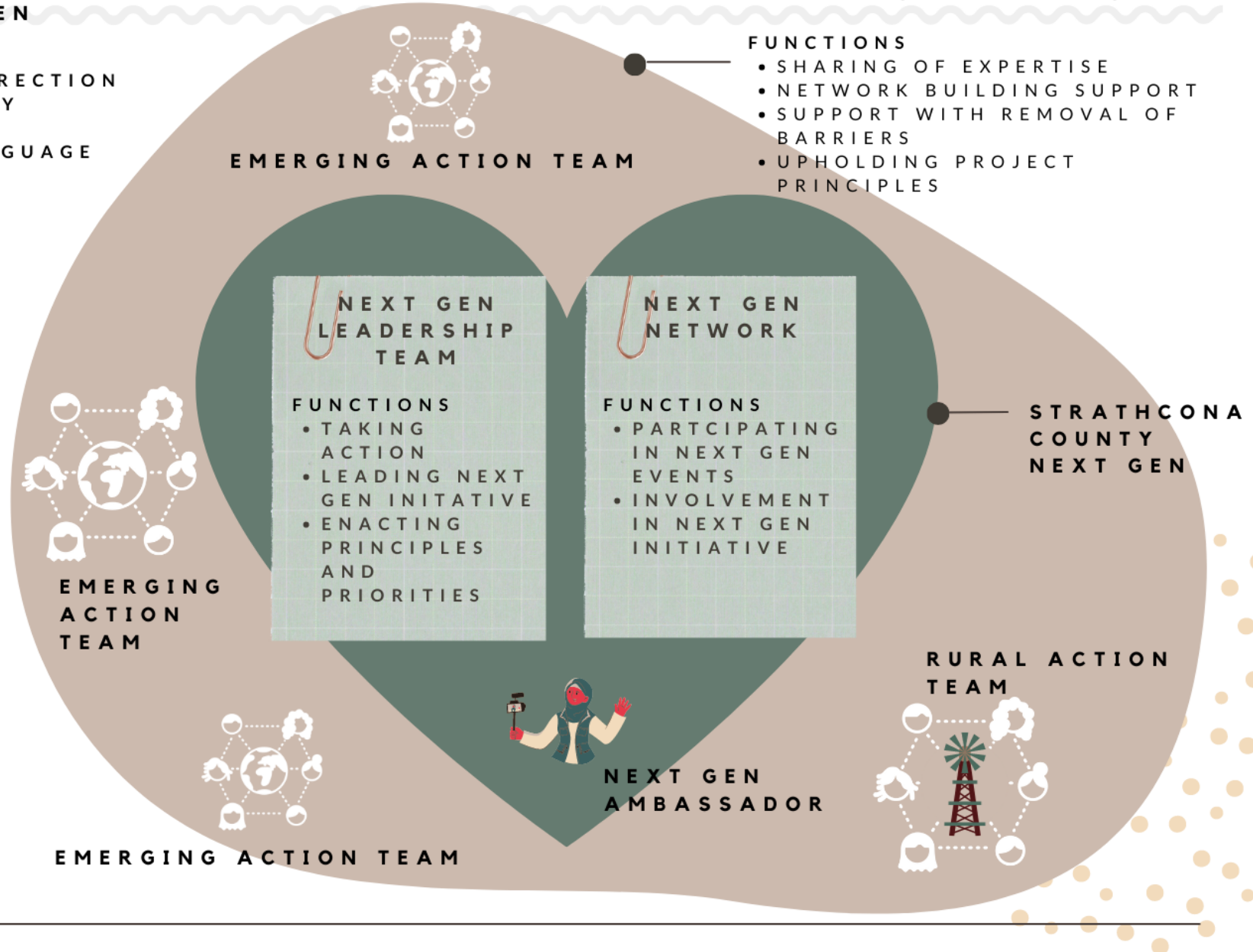
FUNCTIONS

- SECRETARIAT SUPPORT
- REPORTING AND EVALUATION SUPPORT

ECOSYSTEM OF COMMUNITY PARTNERS AND ALLIES

FUNCTIONS

- SHARING OF EXPERTISE
- NETWORK BUILDING SUPPORT
- SUPPORT WITH REMOVAL OF BARRIERS
- UPHOLDING PROJECT PRINCIPLES



Strategy at a Glance

Strathcona County's Strategy for Next Gen Principles

“Principles can serve as a compass that helps our community to continue to navigate our way to a future that supports the holistic wellbeing of Next Gen”.



1

Next Gen Led

2

Next Gen-Centred and Strengths-Based

3

Collaborative, Collective-Action Oriented

4

Community-led

5

Learning and Journey-Oriented

6

Relationship-Centred

7

Inclusivity and Belonging-Centred

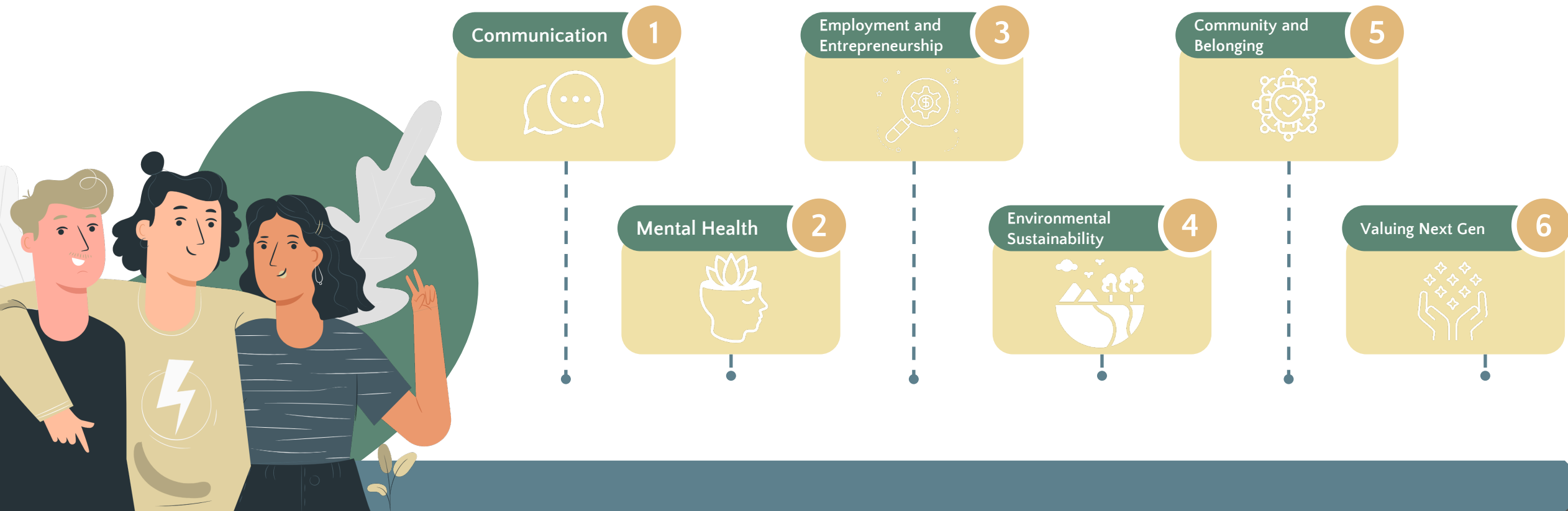
8

Diversity and Person - Centred

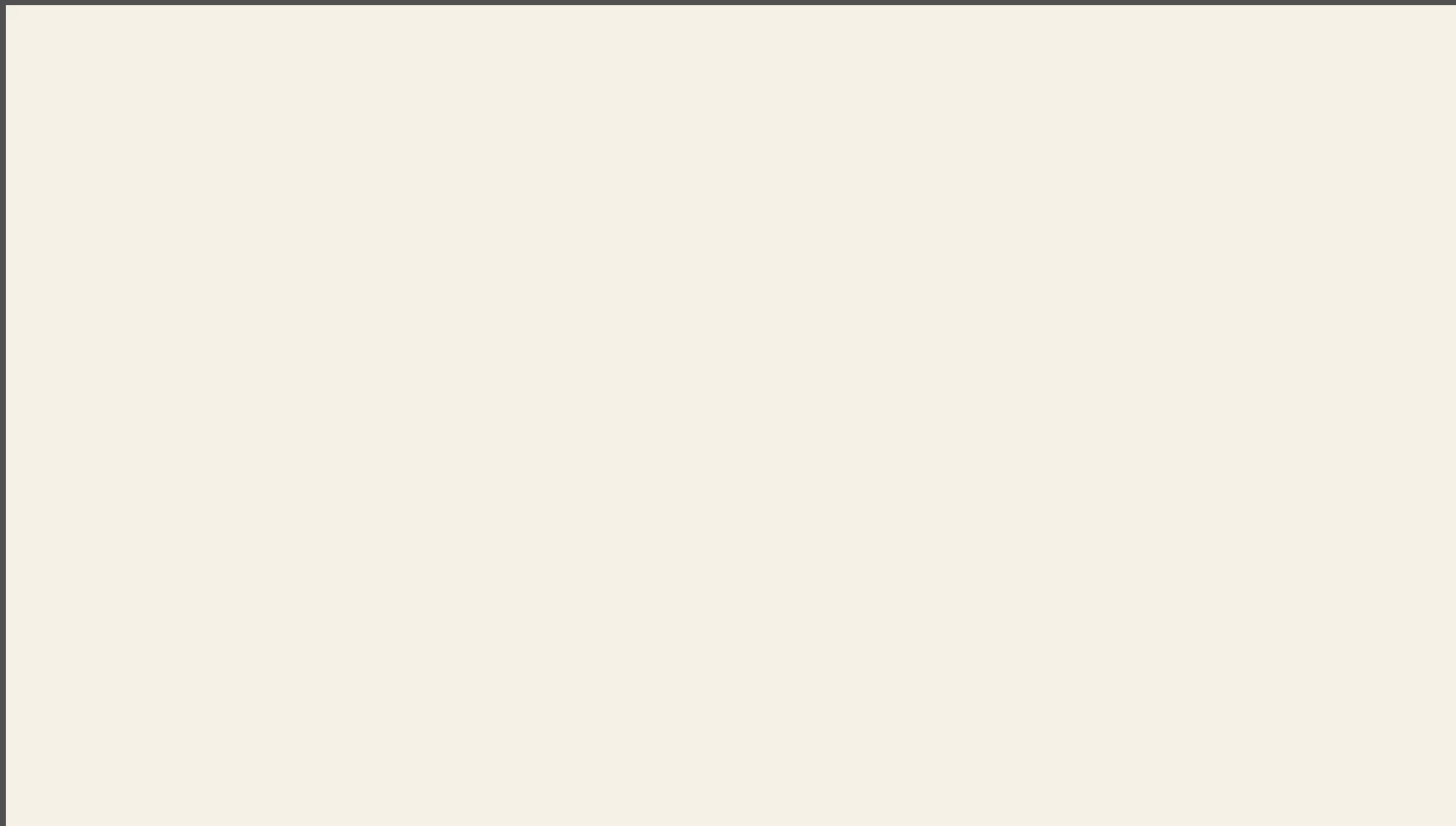
9

Building on the Foundation

Strathcona County's Strategy for Next Gen Priority Areas



"These priority areas, grounded in the voices of Next Gen, have become a cornerstone of the strategy."





Impact Stories

Next Gen Collaboration Grant

The Strathcona County Next Gen Co-Chair Support Team successfully applied for a collaboration grant to further work on the Strathcona County Next Gen Strategy.

Grant dollars have supported hiring of a young adult ambassador to be a connector in the community.

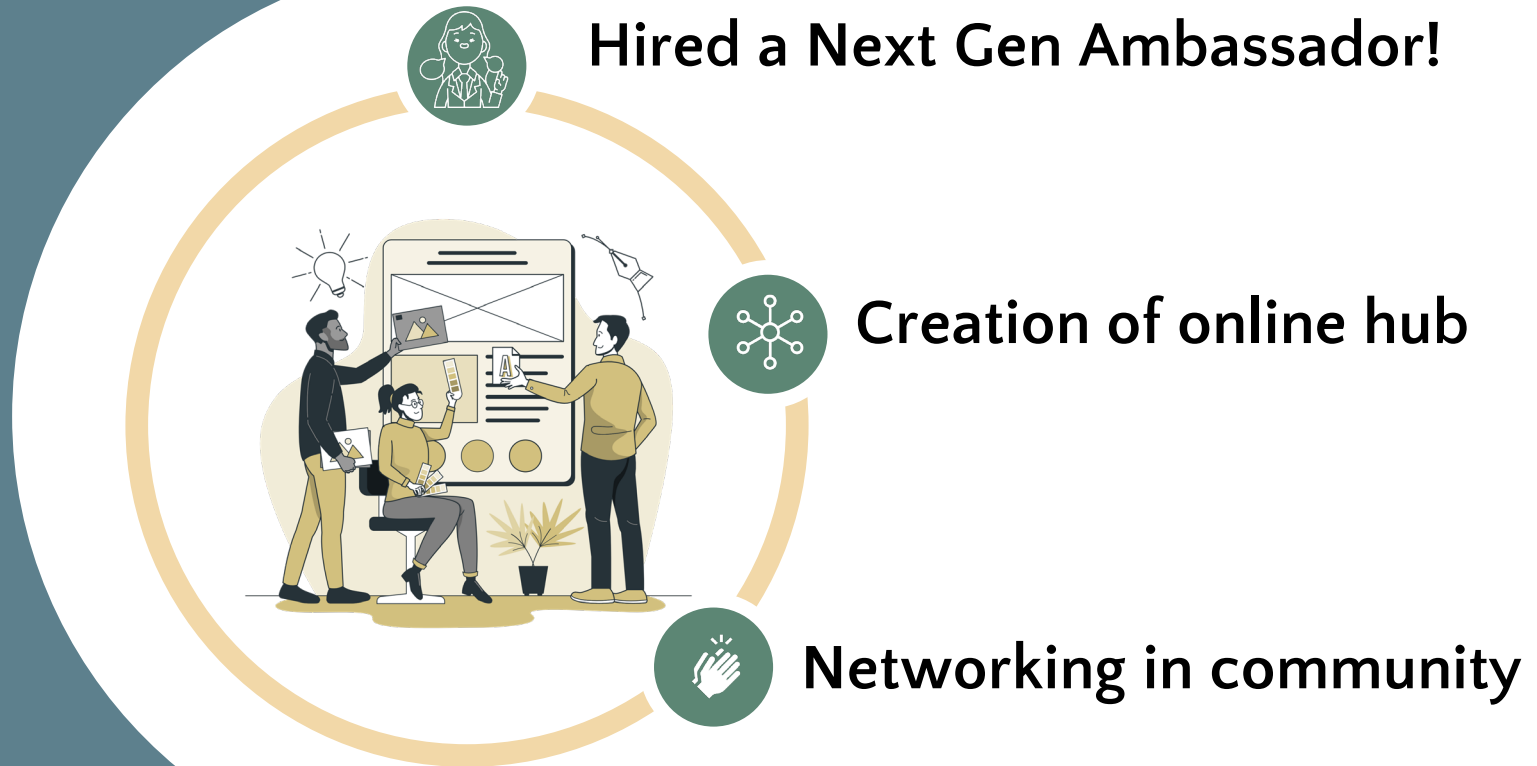


Image Retrieved From: <https://storyset.com/work> Work illustrations by Storyset

Next Gen Leadership Team

The Next Gen Leadership Team is a group of youth and young adults who play a key role in developing a sense of community and belonging among Next Gen in Strathcona County.

Members of the Next Gen Leadership Team help plan events and initiatives, lead and have a voice, take action and mobilize change.



Rural Action Team

A group of community partners representing rural Strathcona County have come together to form a rural action group to support the unique needs of youth in rural Strathcona County.

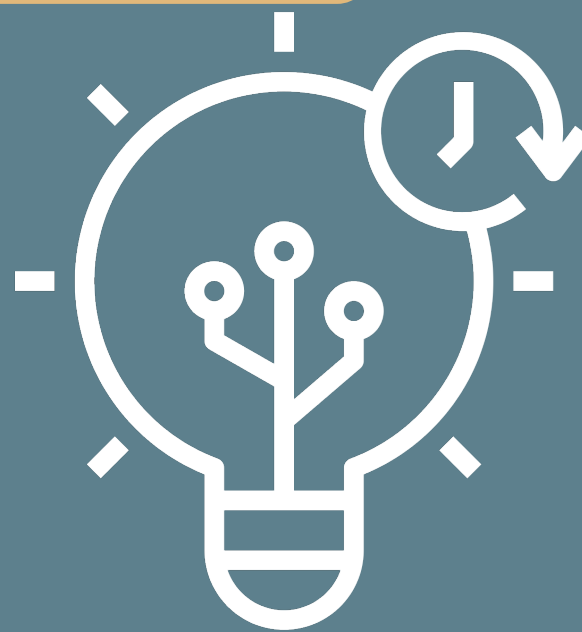


Image Retrieved From: <https://storyset.com/nature>>Nature illustrations by Storyset

Other Impacts



Future Action





We want to hear from you!

Visit PollEv.com/sfcs442 and answer the following question:

The Strathcona County Strategy for Next Gen is about having all community members think about their work through a Next Gen friendly lens. What are some things that you can do to contribute to Next Gen in your work?

Thank You & Questions

strathcona
county
next gen