

A Safe Place

Presentation to Strathcona County Priorities Committee
September 13, 2022

Today's Purpose

- Progress in plans to build a new domestic violence shelter in Strathcona County
- Request for Council support to keep existing momentum

Who We Are Now

- Short term housing and supports
- Trained staff, Volunteers, Board of Directors
- Community partnerships



INCREASING DEMAND FOR
SERVICES



BUILDING NO LONGER
SUITABLE



FUNDING OPPORTUNITIES
DECREASING

Pressure Points

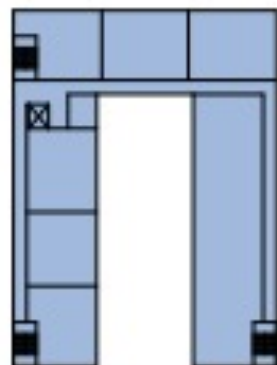




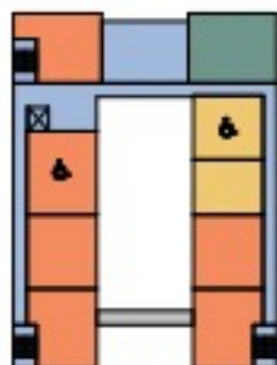


Pressure Valve

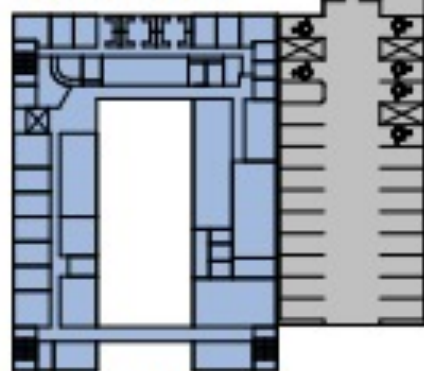
Expanded capacity with expanded services



BASEMENT



SECOND, THIRD & FOURTH FLOOR



MAIN FLOOR



ISOMETRIC VIEW

FLOOR AREA

| | |
|--------------|--|
| BASEMENT | 1046 m ² |
| MAIN FLOOR | 1081 m ² |
| SECOND FLOOR | 1049 m ² |
| THIRD FLOOR | 1049 m ² |
| FOURTH FLOOR | 1049 m ² |
| TOTAL | 5274 m ² (56789 m ²) |

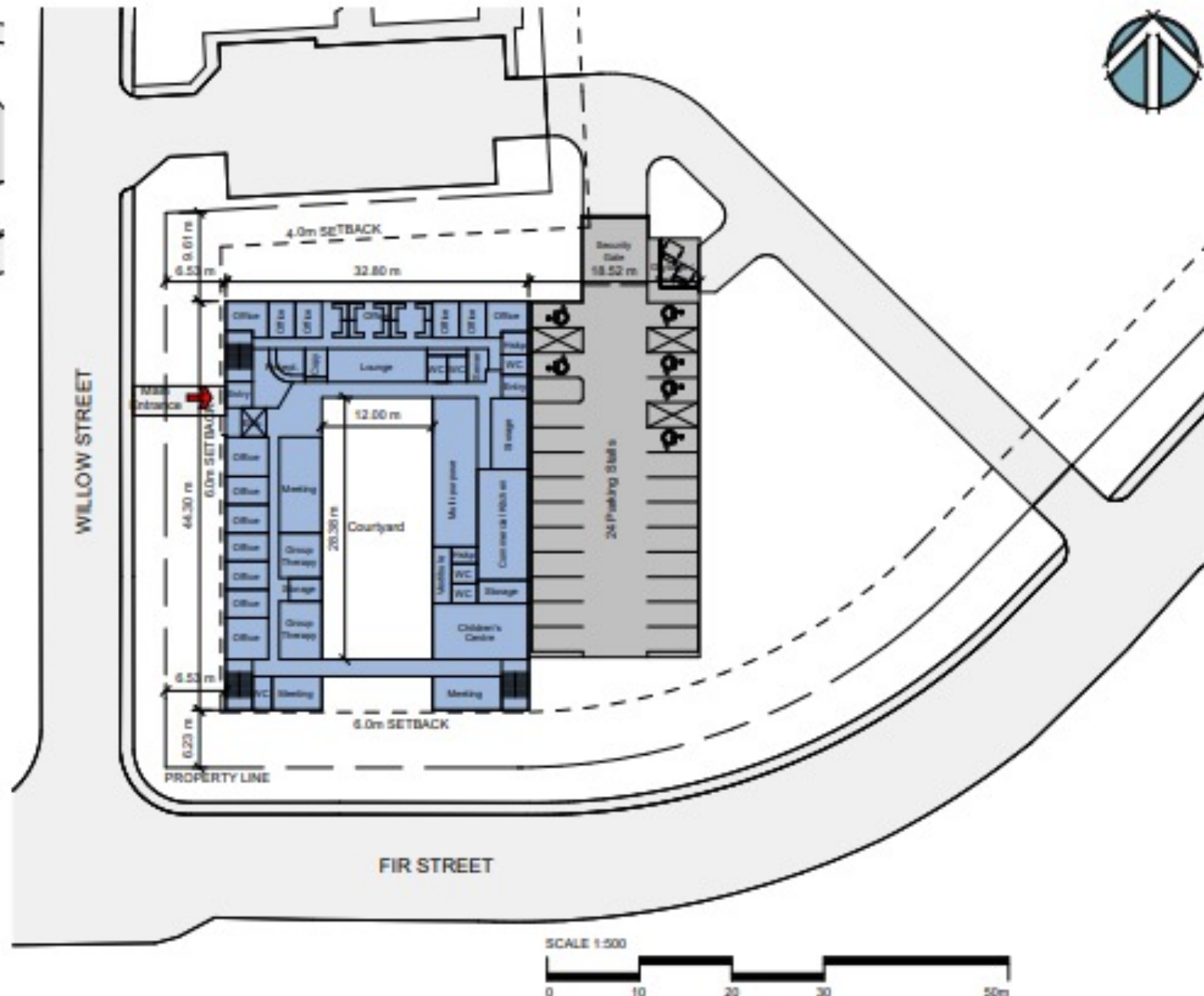
SUITE COUNT

| | |
|----------------|----|
| ONE BEDROOM: | 6 |
| TWO BEDROOM: | 18 |
| THREE BEDROOM: | 3 |
| TOTAL UNITS: | 27 |

PARKING STALL: 24

LEGEND

| | |
|--|-----------------|
| | COMMON AREAS |
| | 1 BEDROOM SUITE |
| | 2 BEDROOM SUITE |
| | 3 BEDROOM SUITE |



Shoulders to the Wheel



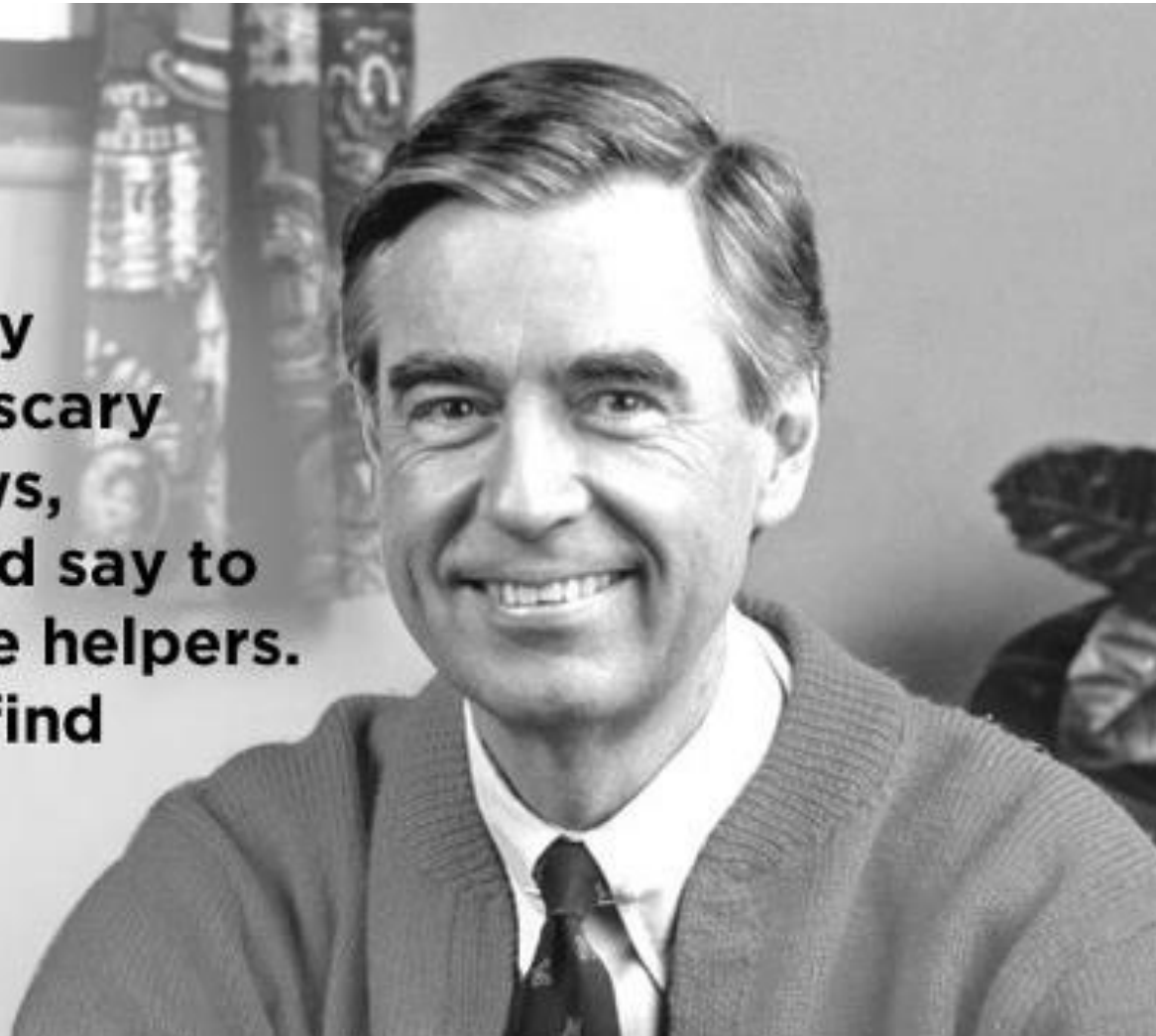
Our Need

Suitable parcel of land

- Sub-division of Fir and Willow Street parcel
- Other County owned land
- Facilitation of other land possibilities

**“When I was a boy
and I would see scary
things in the news,
my mother would say to
me, ‘Look for the helpers.
You will always find
people who are
helping.’”**

–Mr. Rogers



A Safe Place[✿]

Thank you for your time.

Questions?