

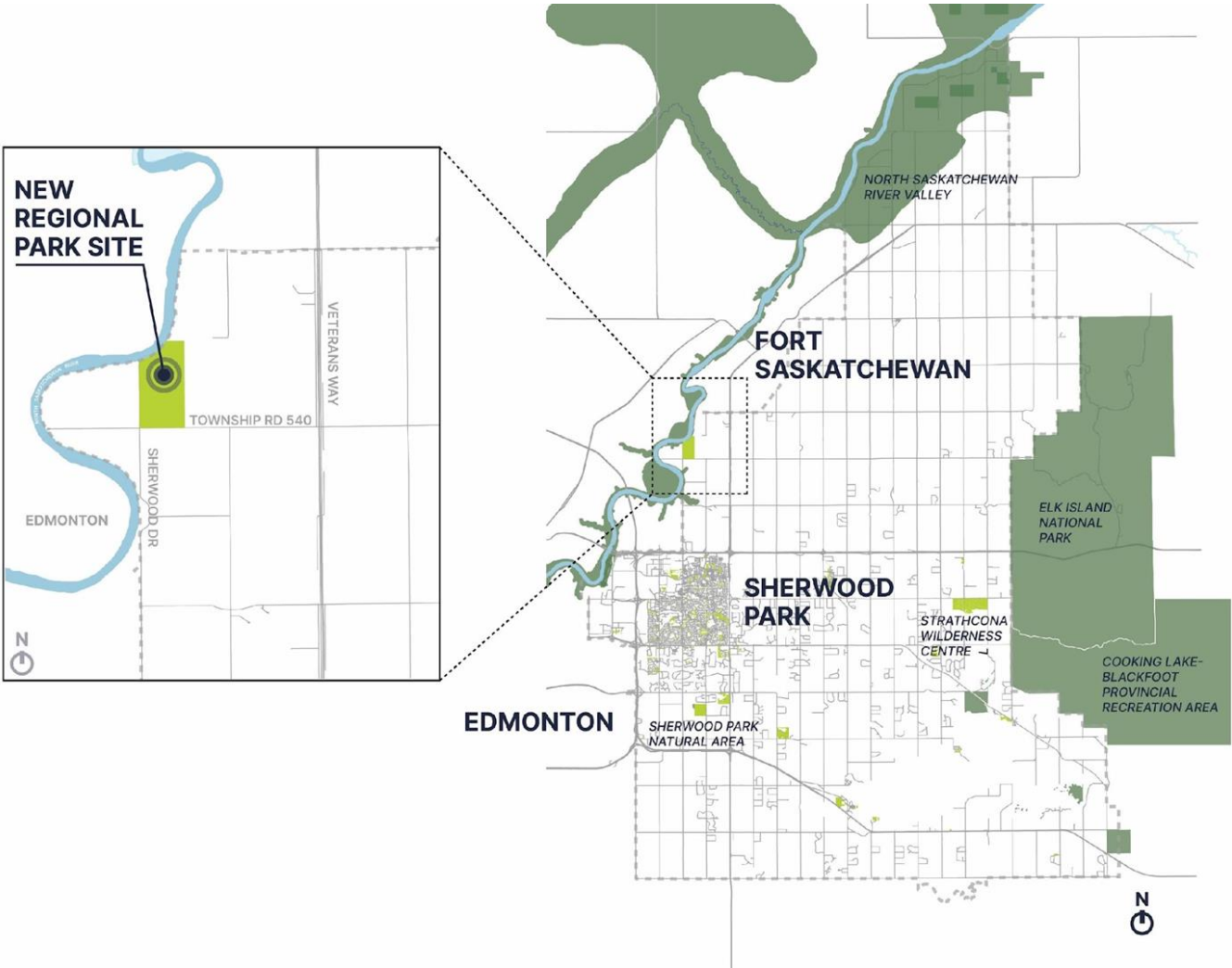
# Strathcona County Regional Park

Phase II Engagement  
What We Heard from the Community

# Agenda

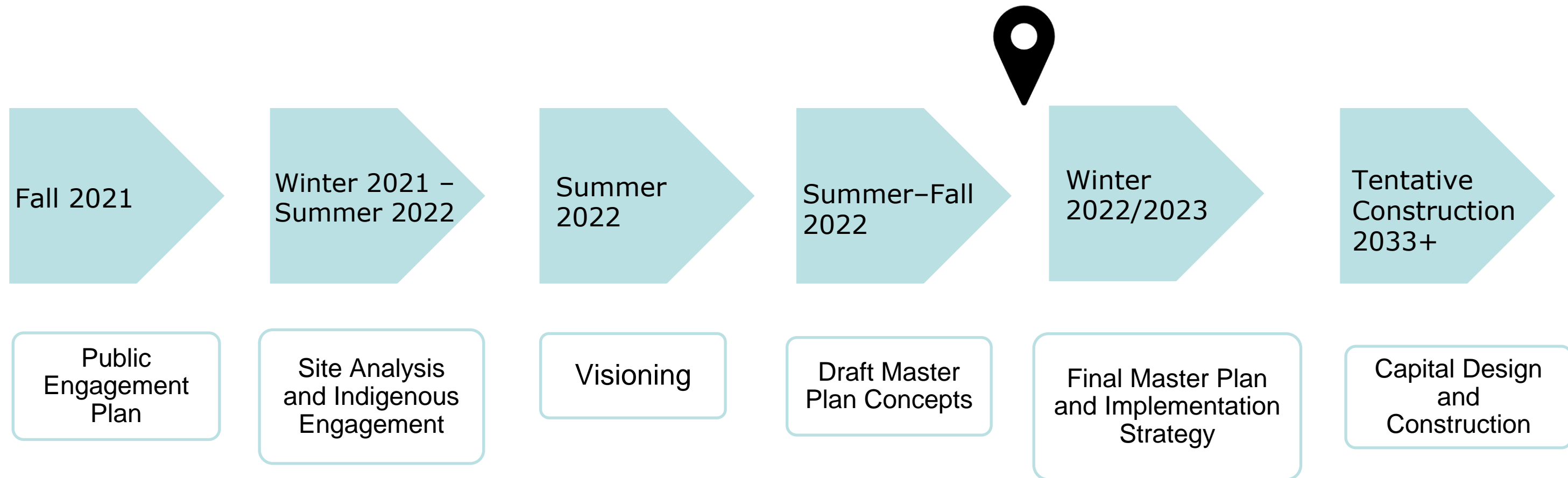
- 1. Project Overview and Timeline**
- 2. Work Completed to Date**
- 3. Phase II Engagement Findings**
- 4. Next Steps**

# Location Map



# Master Plan Timeline

The Park Master Plan will be a 15-year vision for the community.



# Master Plan Inputs

## Public and Stakeholder Engagement

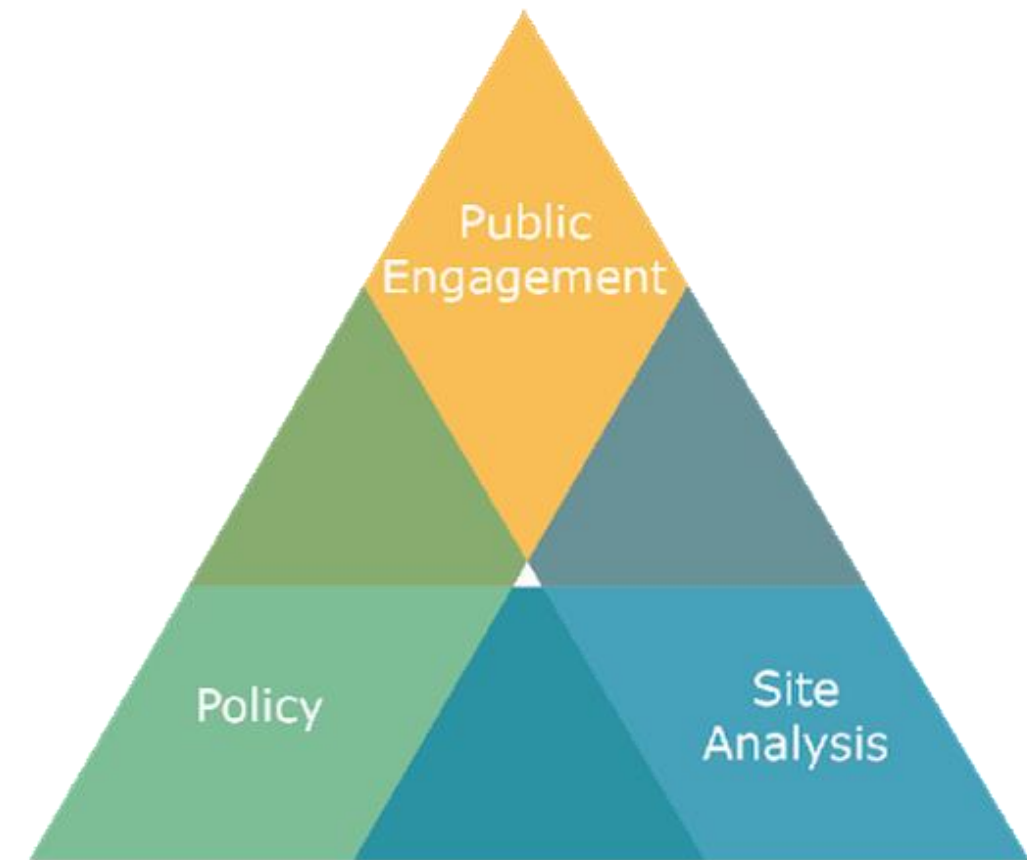
- To ensure the Master Plan responds to community needs

## Policy

- To ensure alignment with Strathcona County's strategic direction and the Recreation and Culture Strategy

## Site Analysis

- To discover opportunities and determine appropriate uses for the site to share in a 15-year vision





# Work Completed to Date

- **2008:** River Valley Alliance endorsed Plan of Action identifies land in Strathcona County for a new regional park
- **2017:** Council approves acquisition of 290-acre parcel
- **2019:** County begins Indigenous Engagement Strategy for the Master Plan
- **2020-2021:** Virtual workshops and site visit with Indigenous Communities and Organizations
- **October 2021:** Master Plan commenced including site analysis, policy review, and public engagement plan completed
- **2022:** Two rounds of public and stakeholder engagement and virtual engagement event with Indigenous Communities and Organizations

# Phase I Public Engagement Recap

## February 2022

- Participants learned about the project and the site's opportunities and challenges
- We asked what type of activity and development they want to see in the park
- Feedback was used to develop a park vision statement and two distinct park concepts
- Overall, participants wanted to focus on keeping the park natural while introducing some site-sensitive cultural and recreation opportunities





# Draft Master Plan Concepts

## Summer 2022

- The County and consultant built out two different park concepts that both respond to public and stakeholder feedback
- Additional water studies were also completed to help inform future programming and water management in the park

Concept 1



Concept 2





# Concept 1

## Rec-focused

### Nature:

- a. Restored forest
- b. Tree farm
- c. Connected ponds
- d. Lake loop with an island
- e. Meadow plots with native grasses and wildflowers

### Movement:

- f. Accessible, multi-season pathways
- g. Parking and access roads
- h. Small boardwalks

### Park Uses:

- i. River lookout
- j. Public art
- k. Gravel beach
- l. Cultural hub with community building (for permanent programs and/or rentals)
- m. Boathouse for small watercraft rentals and boat launch
- n. Day use and picnic areas with concession stand
- o. Sports fields
- p. Small nature playground
- q. Flexible space for events, concerts, and festivals





# Concept 2

## Nature-focused

### Nature:

- a. Restored riparian forest
- b. Restored, connected wetlands
- c. Varied topography to support different native plant communities
- d. Nature education and interpretive signs

### Movement:

- e. Accessible, multi-season pathways
- f. Parking and access roads
- g. Extensive boardwalk system along wetlands

### Park Uses:

- h. River lookout
- i. Hilltop lookouts
- j. Gathering space with natural seating and picnic areas
- k. Skating loop
- l. Pavilion with washrooms
- m. Boathouse for small watercraft rentals and boat launch
- n. Disc golf course
- o. Nature playground with splash pad and water play

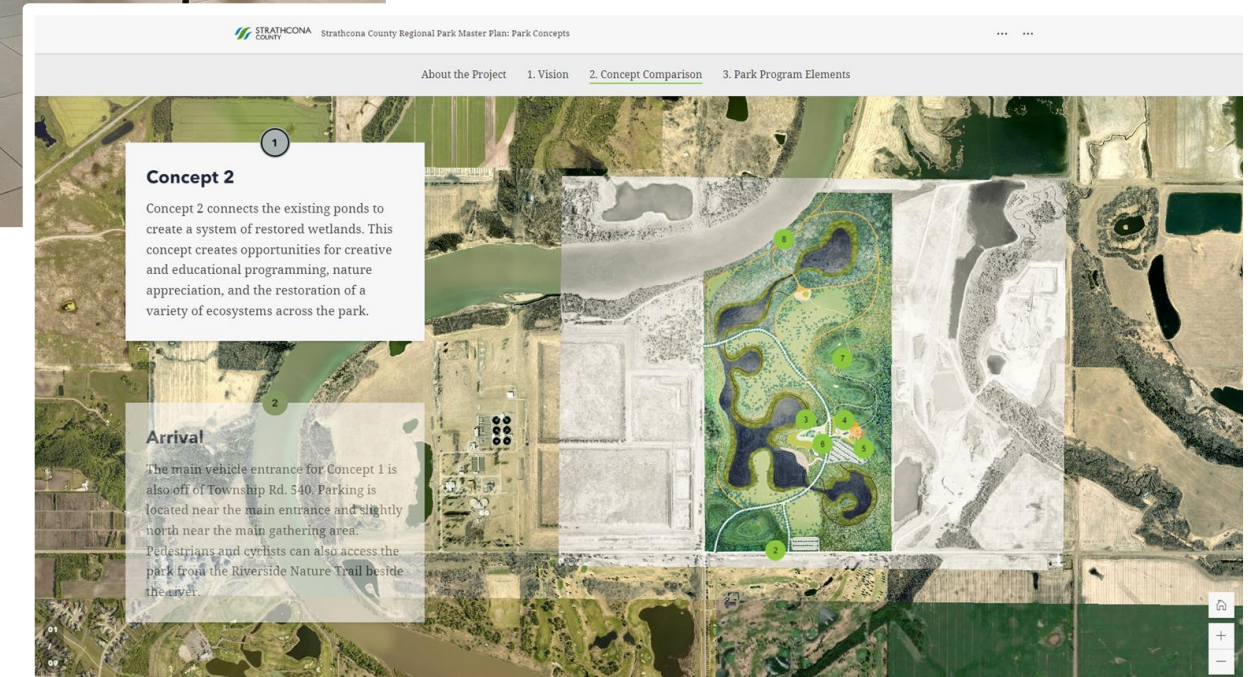
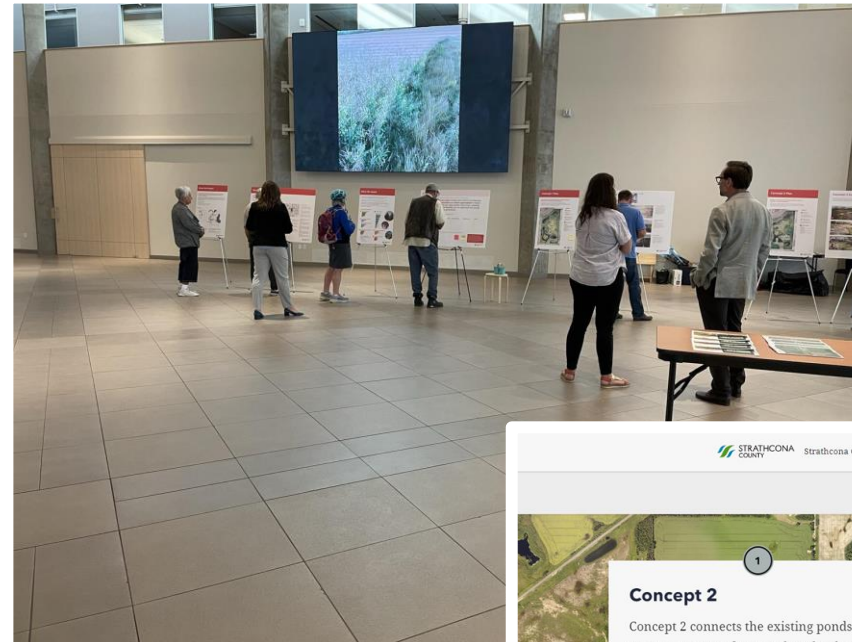




# Phase II Engagement Methods

## June-July 2022

- Public Open House
  - June 20, 2022, 5-8pm
  - 55 attendees
- Online Survey
  - June 20-July 8, 2022
  - 1,388 visits to survey during the engagement period





# Phase II Engagement: What We Heard

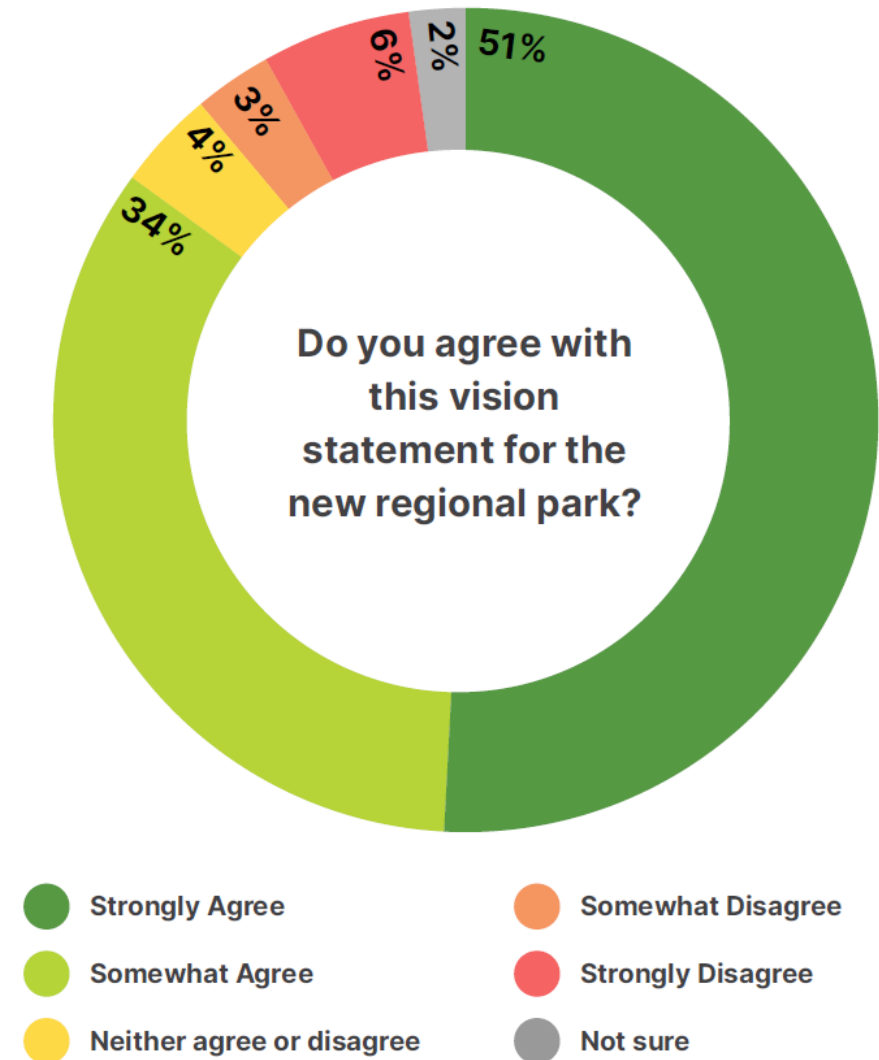
## A | Draft Vision Statement

- The following vision statement, developed from public and stakeholder feedback in Phase I, was presented:

...a **regenerative river park** in Strathcona County that balances inclusive **outdoor recreation** and **nature appreciation** to foster a healthy, **connected** river valley system, becoming a meeting place where **important histories** can be unearthed and shared with present and future generations.

# Phase II Engagement: What We Heard

## A | Draft Vision Statement Feedback



# Phase II Engagement: What We Heard

## A | Vision Statement Next Steps

- Based on the feedback from Phase II, the vision statement has been revised to:

**... a regenerative riverside park in Strathcona County which balances inclusive outdoor recreation, nature appreciation, and historical recognition, fostering a healthy, connected river valley system.**





# Phase II Engagement: What We Heard

## B | Concept Comparison

- Participants were asked which concept they preferred when it came to the treatment of the:
  - Trails and pathways,
  - Landscape, and
  - Water

Concept 1



Concept 2





# Phase II Engagement: What We Heard

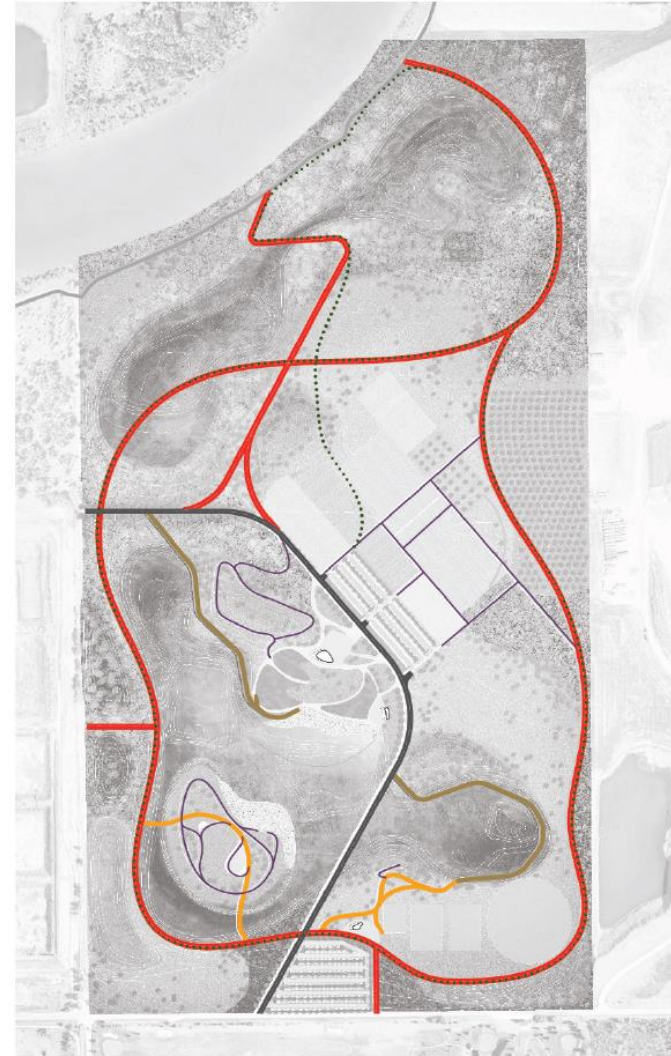
## 1. Trails and Pathways

- Both concepts include the same trail types, but in different configurations
- Both focus on accessibility and visitor experience

### Legend

- Vehicle access road with pedestrian walkway
- Primary paved multi-use pathway
- Secondary paved pathways
- Gravel pathways
- Raised wooden boardwalks
- ..... Natural trails / cross-country ski trails

Concept 1



Concept 2



# Phase II Engagement: What We Heard

## 2. Landscape Design

- Concept 1 maintains the existing flat landscape, with expansive views across the park
- Concept 2 introduces varied topography, with trails to explore and hilltop lookouts





# Phase II Engagement: What We Heard

## 3. Water Design

- Concept 1 focuses on water recreation with a large lake and island for gathering
- Concept 2 connects the existing ponds into a series of naturalized wetlands with interpretive boardwalks



# Phase II Engagement: What We Heard

## B | Next Steps

- Combine most popular elements from both concepts into the final concept plan, including:
  - Winding pathways and pathway loop
  - Boardwalks
  - Hills and lookouts
  - Water activities
  - Connected wetlands

# Phase II Engagement: What We Heard

## B | Next Steps

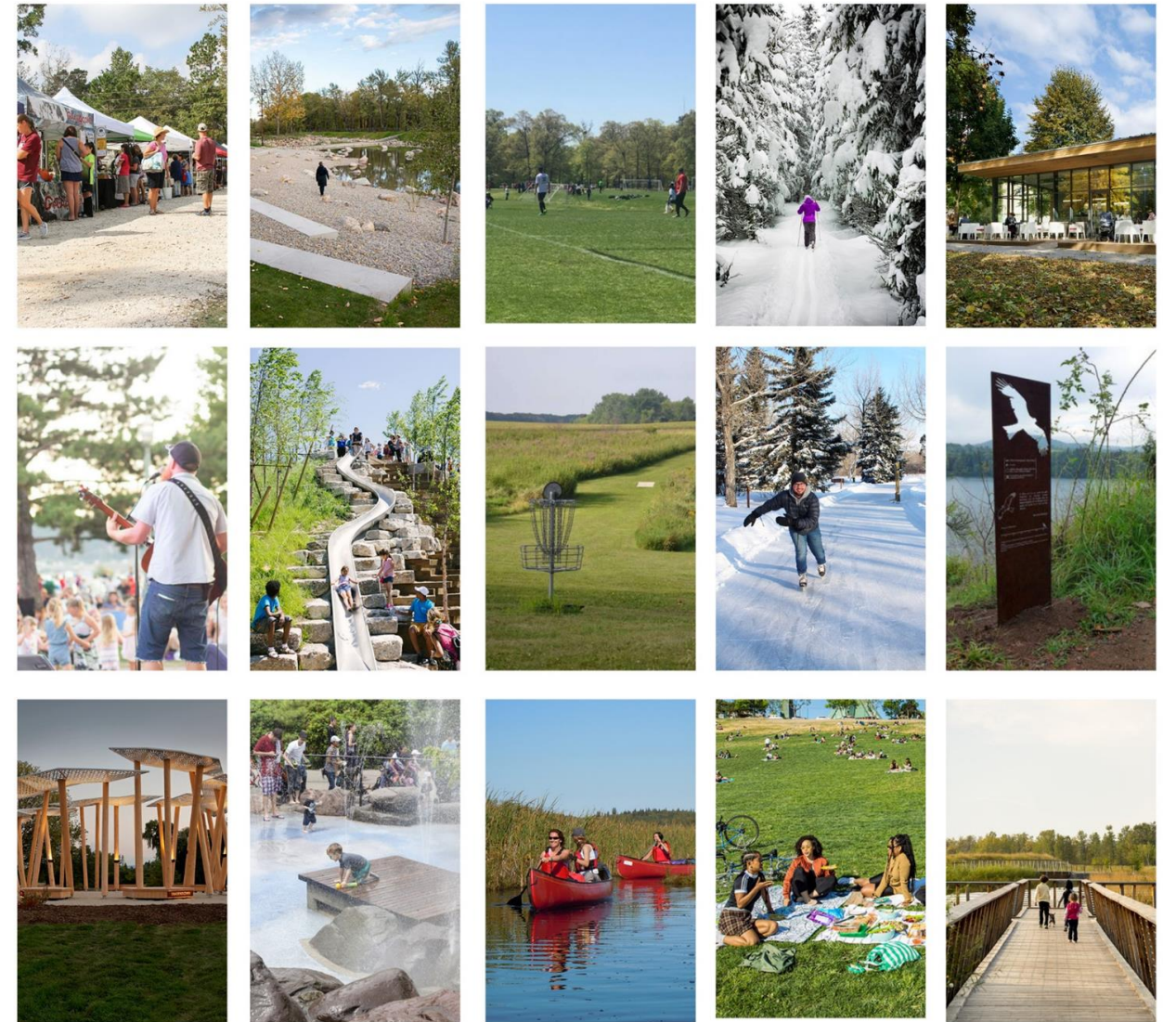
- Address concerns, such as:
  - Cost of development
  - Impacts of development on water, wildlife, and plants
  - Potential for user conflict and increased noise



# Phase II Engagement: What We Heard

## C | Park Program Elements

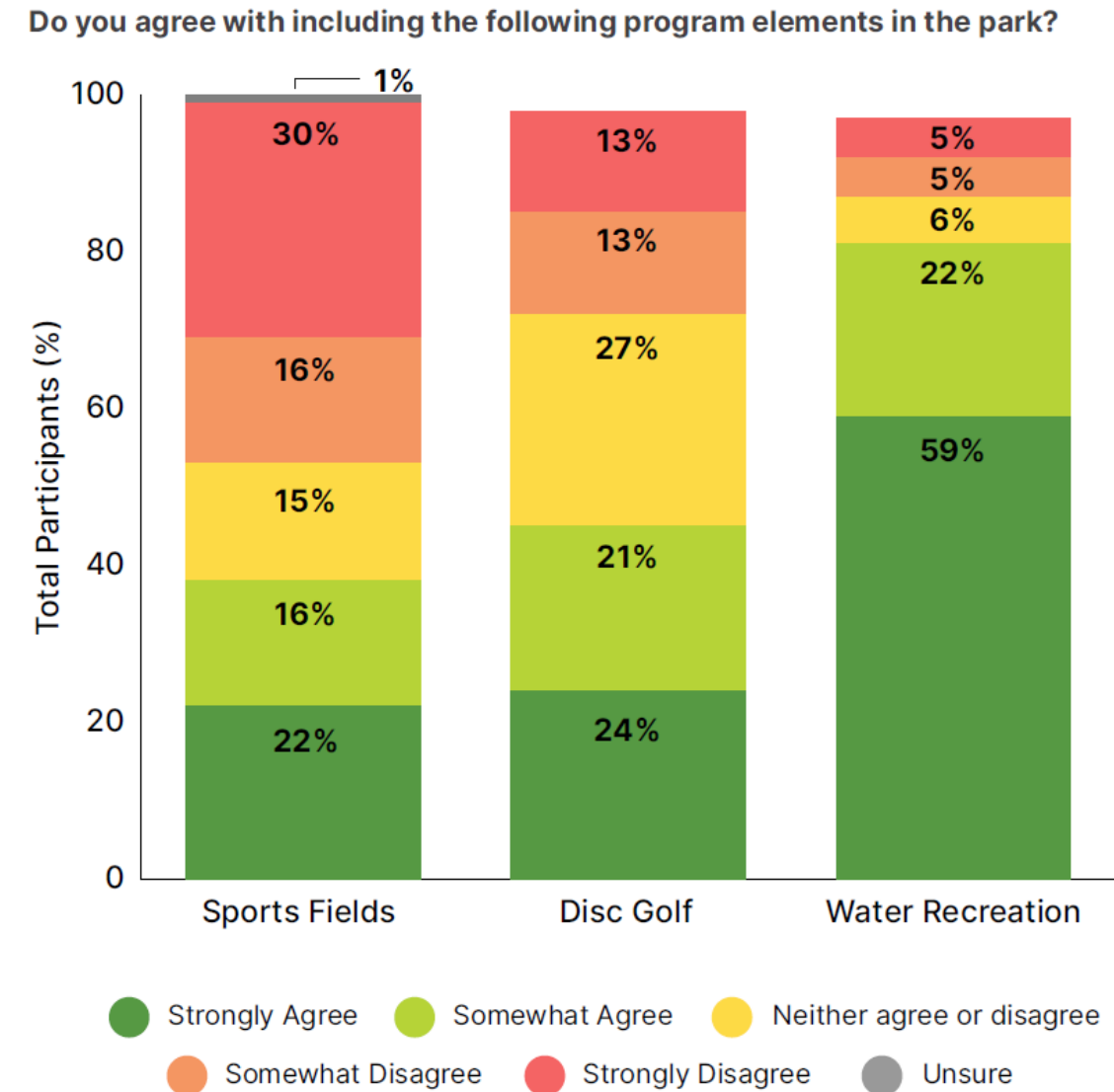
- Participants were asked which (if any) of the sixteen proposed park elements do they agree with including in the final park plan



# Phase II Engagement: What We Heard

## C | Sports and Recreation

- Strongest support for water recreation
- Many feel that sports programming will take away from the enjoyment of the natural feel of the park
- However, some participants would like more opportunities for recreation in the County

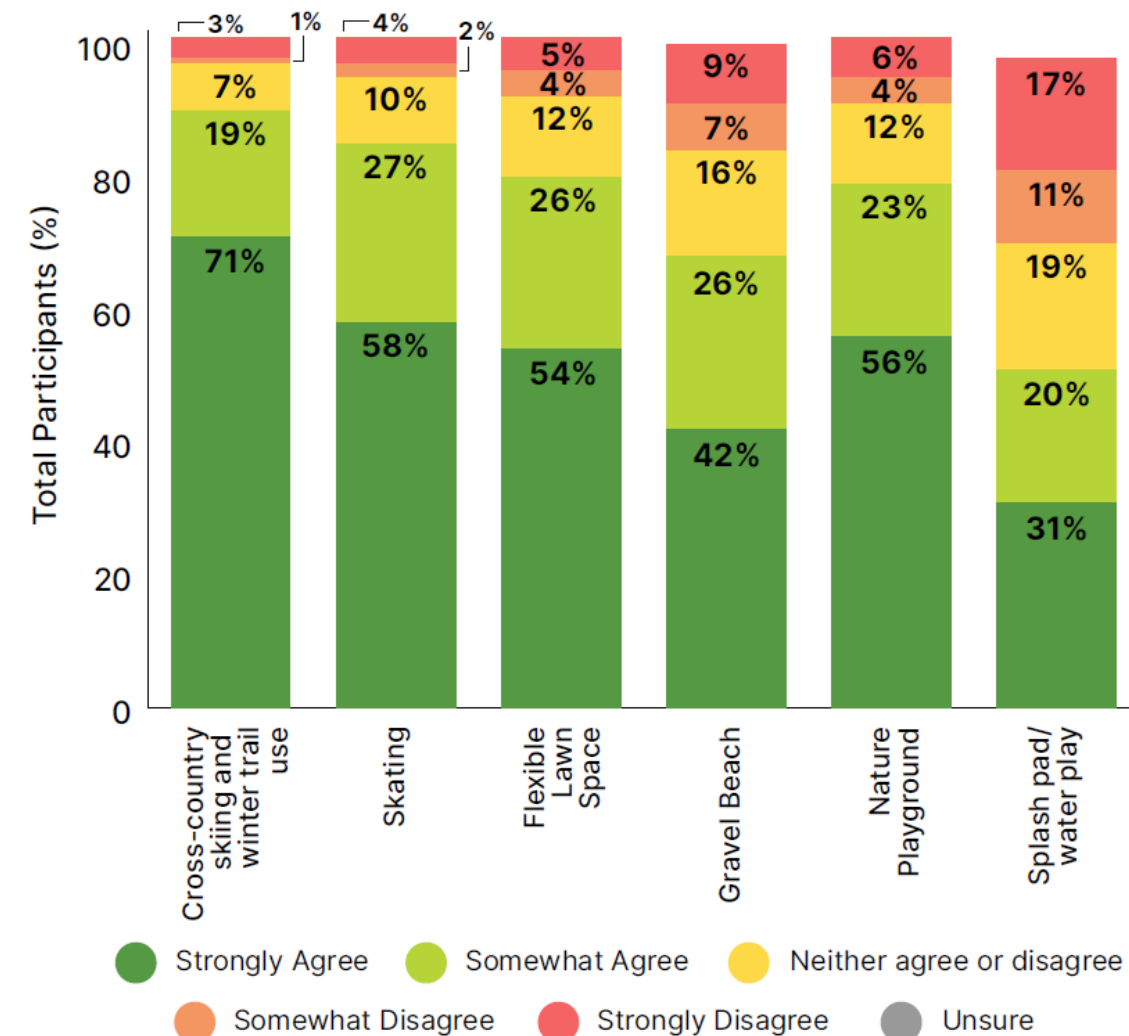


# Phase II Engagement: What We Heard

## C | Leisure Activities

- Participants want to see more focus on winter activities
- Flexible lawn space is seen as low-impact and supports community gathering
- Nature play for all ages is supported

Do you agree with including the following program elements in the park?

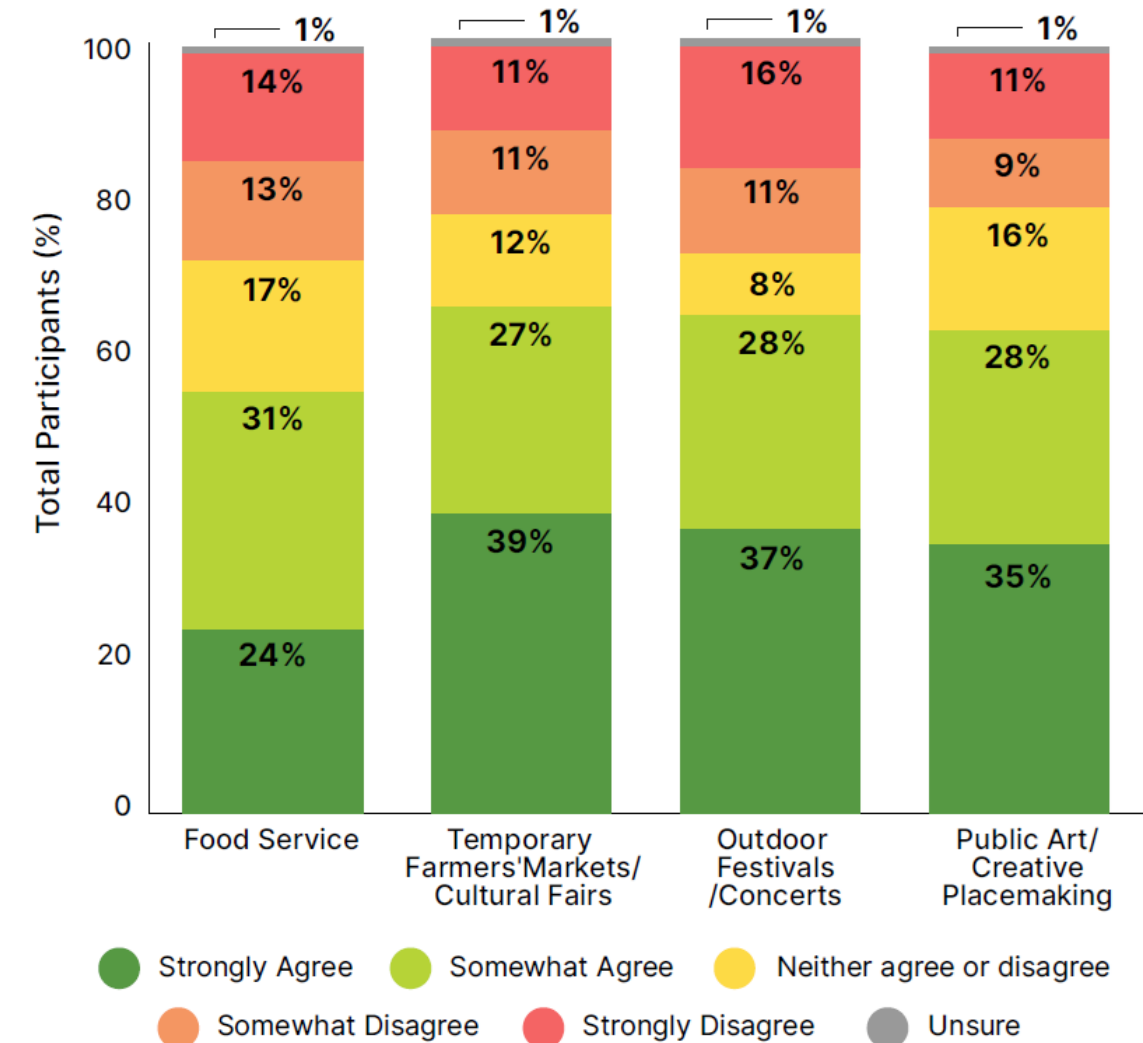


# Phase II Engagement: What We Heard

## C | Culture and Tourism

- Culture and tourism activities received lower support due to the perceived impact on nature and park visitor experience
- Participants identified opportunities for public art to be incorporated in other park features (e.g. pavilion, playground)

Do you agree with including the following program elements in the park?



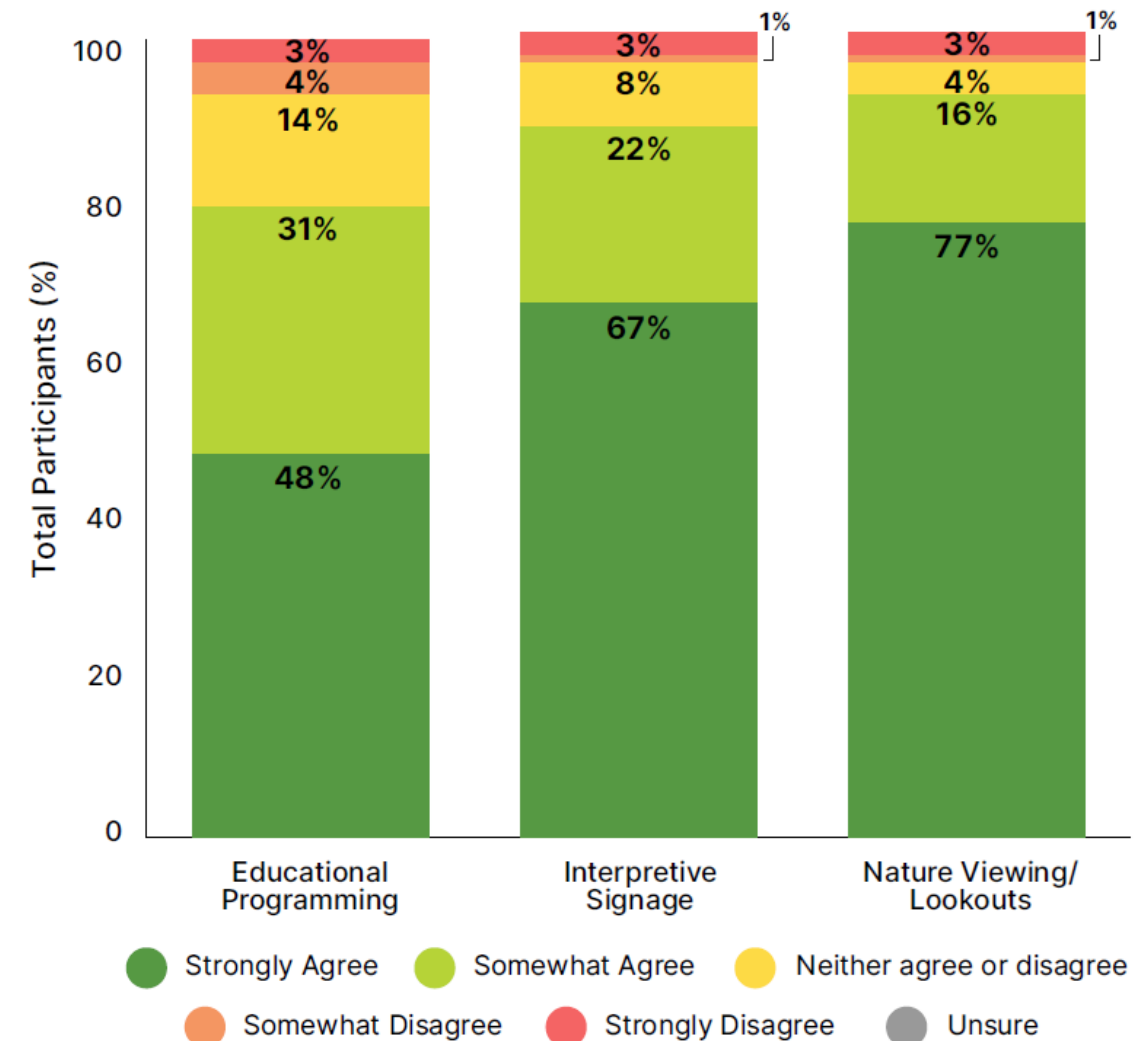


# Phase II Engagement: What We Heard

## C | Education and History

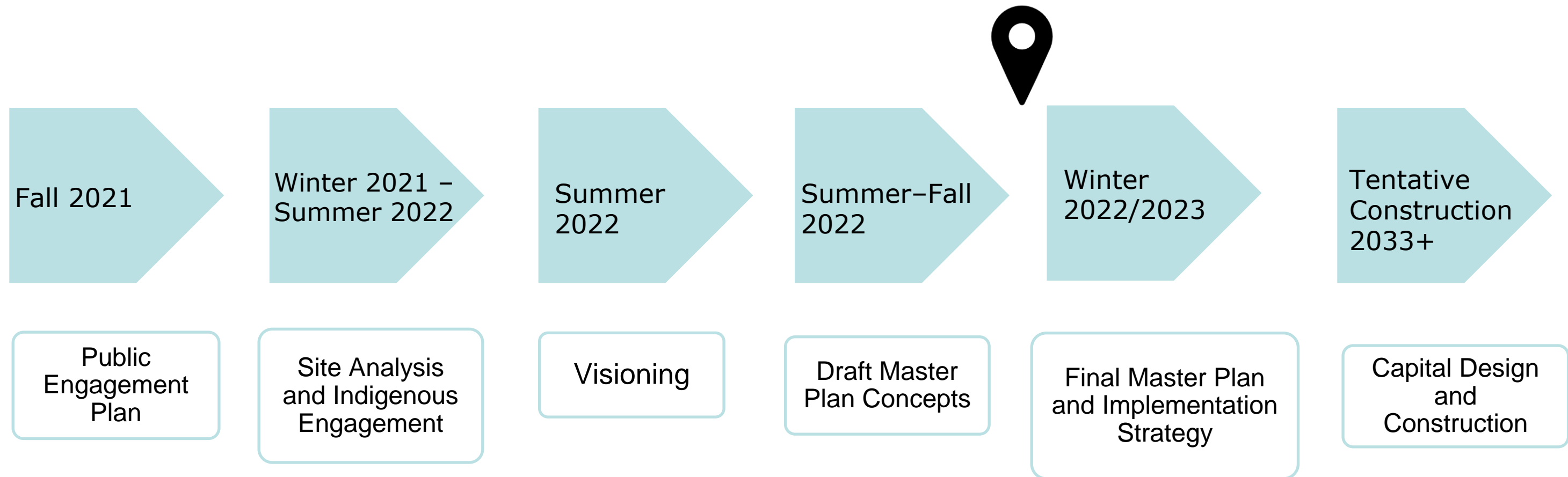
- Interpretive signage and lookouts received a high level of support
- Suggested topics for interpretation include: nature, Indigenous history, and the history of settlement in Strathcona County

Do you agree with including the following program elements in the park?



# Next Steps and Timeline

The Park Masterplan will be a 15-year vision for the community.



# Questions