

Recreation and Culture Strategy

Implementation Plan

**Strathcona County's response to the Strategy
2020-2031**

2022 Status update



Acknowledgement

Strathcona County is located on Treaty Six Territory and the homeland of the Métis Nation of Alberta, Region Two and Four. Strathcona County honours the First Peoples of this land. We recognize that we stand upon land that carries the footsteps of Cree, Métis, and Blackfoot amongst many other Nations, who have been here for thousands of years. Therefore, Strathcona County has an inherent responsibility to foster healthier relationships with First Peoples and further the Calls to Action as outlined by the Truth and Reconciliation Commission.



McPherson Spray Deck



Accessible water wheelchair - Broadmoor Lake Park

Content

A look back at the Strategy	1
Linking back to the Strategic Plan	2
Action Plan Status	
Timing	3
Outcomes and measures	4
1: Community needs	5
2: Inclusion	7
3: Building capacity	7
4: Environmental stewardship	8
5: Fiscal responsibility	9



Strathcona Wilderness Centre - cross country ski lessons



Emerald Hills Leisure Centre

A look back at the Strategy

Strategy and implementation plan

Strathcona County Council approved the Recreation and Culture Strategy in 2019 which serves as the guiding document for the community's provision of recreation and culture services over the next 12 years. This strategy is a high level "road map" that extends its focus beyond facility development and enhancement with the vision of providing a more holistic view of recreation, parks and culture priorities.

The strategy was built on the needs articulated by the community. An extensive amount of public dialogue took place to guide the creation of the Strategy; engagement has been ongoing with both the public and stakeholder groups as the strategy continues to move forward.

The Implementation Plan was developed with ongoing, short, medium and long-term priorities, including public investment recommendations. This action plan focuses on reinvesting in our existing infrastructure and maximizing use before new infrastructure is constructed. It also looks to partnerships that offer shared benefits and efficient use of resources that best meet community need.

This plan considers synergies with other County services, planning and operations. This includes master plans and strategies such as the 2015 Agriculture Master Plan, 2016 Urban Agriculture Strategy, 2017 Municipal Development Plan, 2018 Social Framework, 2019 Transit Master Plan, 2019 Municipal Land Strategy, 2020 Diversity and Inclusion Policy and the 2020 Tourism Strategy.

It's important to note that priorities and timing identified in this plan are subject to change based on overall corporate priorities.

Project positioning

As part of the ongoing recreation and culture needs assessment process, the following tools provide key information required to inform decisions about priorities for future initiatives.

- Environmental scans - monitor industry changes, trends and issues for early signs of opportunities or challenges that may influence current and future plans.
- Market research - gather information about user needs and preferences.
- Public engagement - involve residents/stakeholders to develop an understanding of issues, gather specific input, identify alternatives, or partner in decision-making.
- Usage analysis - monitor usage, program registration or participation over time to understand and predict future needs and trends
- Facility condition reports - coordinate with infrastructure replacement whenever possible.
- Feasibility studies - may be initiated to further investigate specific projects as needed.

Trail accessibility assessment
for TransCanada Trail in
partnership with Access Now



Linking to Strathcona County's Strategic Plan

The Recreation and Culture Strategy is a vehicle to address many of the priorities set out by Strathcona County's Strategic Plan. Our recreation spaces contribute to the quality of life that our residents value and enjoy. Investment in infrastructure, quality services, and inclusive and welcoming cultural and recreational programs and facilities is a priority and sets us apart. Effective and efficient infrastructure and community partnerships are top priorities in the new Strategic Plan.

How the Recreation and Culture Strategy outcomes contribute to the County's new Strategic Goals

Healthy and Safe Community

Strathcona County is a safe and supportive community that is healthy, active, connected and thriving.

Priorities:

- Indigenous relations that advance reconciliation
- A diverse, welcoming, inclusive, and an accessible community for all
- Social supports that enhance community well-being and safety, and build community connection

Municipal Excellence

Strathcona County is a leading municipality that moves the community forward through service excellence delivered by engaged and empowered employees.

Priorities:

- Optimal use of resources that meets the community's needs

Responsible Development

Strathcona County is an innovative community that encourages sustainability and respects the environment.

Priorities:

- Growth and development that prioritizes community well-being and economic benefits
- Investment in our infrastructure that supports development and complete communities
- Environmental stewardship that addresses climate change and demonstrates responsible use of land and natural resources



Indoor Fieldhouse - concept design

Action plan

This Implementation Plan is meant to guide the efforts and investment of Strathcona County related to recreation and culture services over the next 12-year period in response to the 2019 Recreation and Culture Strategy.

This section outlines the status of action items outlined for each Area of Focus and the proposed timing. Note that the timing is for planning purposes and may be subject to change.

Timing

The Implementation Plan initiatives will be reviewed annually to inform various department Business Plans. Project-specific measures will also be evaluated.

The Implementation Plan will be considered successful when the following three strategy outcomes are achieved. Measures that will be used to determine success will be captured through regular consolidated public engagement and utilization metrics.



Ardrossan Regional Park



Outcomes and measures

Individual well-being outcome

Recreation and culture opportunities contribute to the well-being of all individuals.

Measures

- People of all ages and abilities have the opportunity to participate in enjoyable activities that facilitate being physically active throughout their lives and promotes physical literacy.
- People of all ages and abilities have the opportunity to participate in creative activities, appreciate the arts, understand history and heritage and attain knowledge about our community culture.
- People of all ages and abilities are able to participate in meaningful leisure pursuits and outdoor recreation and culture opportunities throughout the year.
- Access to recreation and culture opportunities bolster participant self-worth and enhance mental well-being.
- Residents and visitors are able to connect through recreation and culture activities.
- Residents and visitors have access to skill development opportunities through a variety of recreation and culture activities.

Community well-being outcome

Recreation and culture opportunities contribute to the cohesion, vibrancy, and overall well-being of our community.

Measures

- Recreation and culture opportunities and spaces are welcoming, inclusive and strive to be accessible to all.
- Residents and visitors have the ability to participate in a variety of recreation and culture opportunities regardless of age, ability, ethnicity, financial circumstance, geography or self-identity.
- Volunteerism and volunteer organizations are thriving with a strong base of skilled volunteers that feel supported and valued.
- Special events in Strathcona County bring residents and visitors together to celebrate and connect.
- Recreation and culture opportunities are designed and facilitated in ways that boost local economic activity and enhance the attractiveness of the County that benefits residents, community groups, visitors and businesses.

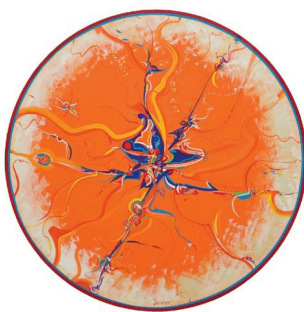
Quality places and spaces outcome

High-quality recreation, parks and culture places and spaces are created and maintained.

Measures

- Recreation and culture facilities and open spaces are diverse and meet modern user expectations.
- Recreation and culture facilities and open spaces are designed to foster community identity and connectedness.
- Recreation and culture facilities and open spaces operate efficiently while maximizing participation levels.
- Recreation and culture facilities and open spaces are planned, designed and operated in ways that ensure resilience in the context of climate change.

Janvier



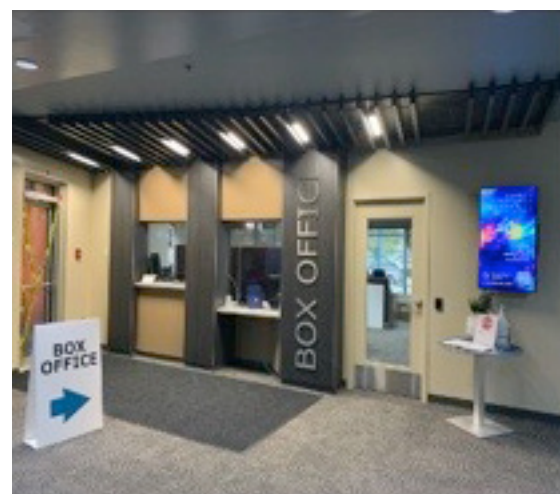
The Healing Language of Alex Janvier

Action plan

	Timing	Status
COMMUNITY NEED	⇒	Ongoing
	⇒	Ongoing
	1⇒	In progress
	2⇒	
	1⇒	In progress
	1⇒	In progress
	1⇒	2023
	3⇒	
	3⇒	
	3⇒	
	1⇒	Complete



Art Gallery@501



Festival Place - new accessible box office

COMMUNITY NEED

	Timing	Status
1.6: Allocation policies and utilization guidelines	⇒	Ongoing
1.7: Project planning process		
• Emerald Hills Leisure Centre - 2 nd floor CONCEPT	1⇒	Complete
• Indoor Field House - CONCEPT	1⇒	Complete
• River Valley Alliance (RVA) - pedestrian bridge CONCEPT	1⇒	Complete
• Strathcona County Museum and Archives Functional Plan - STRATEGY	1⇒	In progress
• Sherwood Park Arena/Sports Centre Revitalization - CONCEPT	2⇒	
• Strathcona Olympiette Centre - CONCEPT	2⇒	
• Strathcona Wilderness Centre - Information Centre CONCEPT	2⇒	
• Cultural venue expansion - STRATEGY/CONCEPT	3⇒	
1.8: Community partnership process	1⇒	Ongoing
1.9: Regional cooperation	⇒	Ongoing
1.10: Community connections - building a network	⇒	Ongoing



Greengrove Park - 5-hole Disc Golf Course Pilot Project



Emerald Hills Skating Pathway

Action plan

		Timing	Status
INCLUSION	2.1: Inclusion	⇒	Ongoing
	2.2: Play	⇒	Ongoing
	2.3: Barrier-free accessibility (e.g. New PoolPod at Emerald Hills)	⇒	Ongoing
	2.4: Truth and reconciliation	⇒	Ongoing
	2.5: Reduction of barriers	⇒	Ongoing
	2.6: Special events and programs	1⇒	In progress
	2.7: Enhance cultural participation	⇒	Ongoing
	2.8: Opportunities across landscape	⇒	Ongoing
	2.9: Community group support plan	1⇒	In progress
	2.10: Community awareness	⇒	Ongoing



		Timing	Status
BUILDING CAPACITY	3.1: Align partnerships with the Strategy	⇒	Ongoing
	3.2: Reciprocal use agreements and partnerships		
	• École Père Kenneth Kearns Gymnasium BUILD	1⇒	Complete
	• School Reciprocal Use/Joint Use Planning Agreements	2⇒	In progress
	3.3: Volunteerism	⇒	Ongoing
	3.4: Information sharing	⇒	Ongoing
	3.5: Cultural community development	⇒	Ongoing

		Timing	Status
ENVIRONMENTAL STEWARDSHIP	4.1: Parks and open space awareness	⇒	Ongoing
	4.2: Protection of spaces and sites	⇒	Ongoing
	4.3: Environmental inventory	⇒	Ongoing
	4.4: Open Space Master Plan	1⇒	In progress
	4.5: Parks and open space programming	⇒	Ongoing
	4.6: Green technologies and events	⇒	Ongoing
	4.7: Environmental sustainability and climate change mitigation	⇒	Ongoing



Action plan

FISCAL RESPONSIBILITY

	Timing	Status
5.1: Sponsorship	⇒	Ongoing
5.2: Fees and charges framework	1⇒	In progress
5.3: Grants	⇒	Ongoing
5.4: Land acquisition in rural and urban areas	⇒	Ongoing
5.5: Repurposing existing recreation and culture land inventories in rural and urban areas	⇒	Ongoing
5.6: Infrastructure projects		
• Basketball courts in park spaces	⇒	Ongoing
• Skateboard spots in park spaces - SAP complete 2021	1⇒	Complete
• Outdoor Community Partnership Projects	⇒	Ongoing
• Community gathering such as seating areas, gazebos, picnic shelters	⇒	Ongoing
• Ardrossan Skateboard Park - BUILD	1⇒	Complete
• École Père Kenneth Kearns - Gymnasium expansion - BUILD	1⇒	Complete
• Heritage Hills boarded rink - BUILD	1⇒	Complete
• Heritage Hills Park - dog off-leash area - BUILD*	1⇒	Complete
• Josephburg outdoor pickleball courts - BUILD*	1⇒	Complete
• Ardrossan outdoor pickleball courts - BUILD*	1⇒	Complete
• Kinsmen Leisure Centre - universal changeroom/mechanical upgrade - BUILD	1⇒	Complete
• Millennium Place - aquatic mechanical upgrade/ice plant replacement - BUILD	1⇒	Complete
• Moyer Recreation Centre - emergency reception centre - DESIGN/BUILD	1⇒	Complete
• Greengrove Disc Golf Course (5-hole pilot project)*	1⇒	Complete
• Spray deck in Sherwood Park - DESIGN/BUILD - McPherson	1⇒	Complete
• Strathcona Olympiette Centre - curling floor repair - DESIGN/BUILD	1⇒	Complete
• Summerton Spray Deck - BUILD	1⇒	Complete



Timing	Status
--------	--------

FISCAL RESPONSIBILITY

• Village on the Lake - outdoor pickleball court replacement - BUILD	1⇒	Complete
• Strathcona Wilderness Centre - trail lighting Phase 1 - DESIGN/BUILD	1⇒	Complete
• South Cooking Lake multi-sport court, cook shack, fireplace restoration	1⇒	In progress
• Emerald Hills Leisure Centre - 2 nd floor - DESIGN/BUILD	1⇒	In progress
• The Pointe - Agriculture Facility - DESIGN/BUILD*	1⇒	In progress
• Strathcona Wilderness Centre - Trail lighting - Phase 2 - DESIGN/BUILD	2⇒	In progress
• River Valley Alliance (RVA) - footbridge - DESIGN/BUILD	2⇒	
• Sherwood Park Arena/Sports Centre - revitalization - DESIGN/BUILD	2⇒	
• Indoor Field House - DESIGN/ BUILD	3⇒	
• Sally Stewart Park - DESIGN/BUILD	3⇒	
• Strathcona Wilderness Centre - Information Centre - DESIGN/BUILD	3⇒	
• Centennial Park - Regional Tournament Site - DESIGN/BUILD	3⇒ ⁺	
• Cultural venue expansion - DESIGN/BUILD	3⇒ ⁺	
• Strathcona County Museum and Archives - DESIGN/BUILD	3⇒ ⁺	
• Northern Strathcona County Regional Park - DESIGN/BUILD	3⇒ ⁺	

* = new initiative added



Ardrossan outdoor pickleball courts



The Pointe - concept design

Action plan

FISCAL RESPONSIBILITY

	Timing	Status
<ul style="list-style-type: none"> Boarded outdoor rink replacements 		
1. Brentwood Park - BUILD	1⇒	Complete
2. Mills Haven Park - BUILD	2⇒	
3. Strathcona Athletic Park - BUILD	2⇒	
<ul style="list-style-type: none"> Trails (New) 		
1. Sherwood Estates to Executive Estates	1⇒	Complete
2. Granada Boulevard east of Sherwood Park Mall along Eastgate Lake	1⇒	Complete
3. Ardrossan Memorial Hall to Queen Street	1⇒	Complete
4. Ardrossan Sports fields to Ardrossan High School	1⇒	Complete
5. École Père Kenneth Kearns trail – Sandpiper Park to EPKK School	1⇒	Complete
6. Range Road 232 - Estates of Sherwood Park south to Whitecroft	1⇒	Complete
7. Range Road 232 - Balmoral (traffic circle) north to emergency access Sherwood Golf and Country Club Estates	1⇒	Complete
8. Range Road 233 - Sherwood Golf and Country Club Estates to Campbelltown Heights	1⇒	In progress
9. Malvern Park	1⇒	Complete
10. Strathcona Athletic Park Accessible Trail	1⇒	Complete
11. Broadmoor Lake Park Accessible Trail	1⇒	Complete
12. Broadmoor Clubhouse to Smeltzer House - Accessible Trail*	1⇒	Complete
13. Strathcona Regional Trail (Twp 540 - TransCanada Trail)	1⇒	Complete
14. Sherwood Hills Estates to Executive Estates Drive	1⇒	Complete
15. Wyecliff Trail*	1⇒	Complete
16. Baseline Road to Ardrossan	3⇒	
17. Range Road 233 South of Wye - DESIGN/BUILD	3⇒	
18. Range Road 231 South of Wye - DESIGN/BUILD	3⇒	



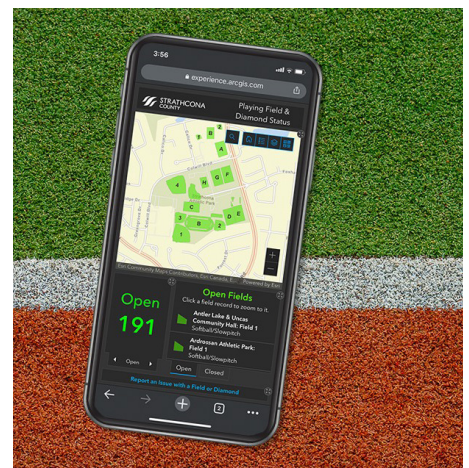
		Timing	Status
	5.7: Technology projects		
	• Business system upgrade (Intelligenz) - Phase 2	1⇒	Complete
	• Festival Place website redesign and ticketing system	1⇒	In progress
	• Broadmoor Golf Course website redesign, tee time booking system	1⇒	Complete
	5.8: Multi-use facilities and open spaces	⇒	Ongoing
	• Facility accessibility audit	1⇒	In progress



Eugene Alexis (mock up) - Sherwood Park Arena



Kinsmen Leisure Centre - “Ripple Effect” by artists Karen Klassen and Erin Pankratz



Field and Diamond - status app

Action plan

FISCAL RESPONSIBILITY

	Timing	Status
5.9: Public art projects (chronological order)		
• Ardrossan Skateboard Park - youth mural	1⇒	Complete
• Kinsmen Leisure Centre - mosaic	1⇒	Complete
• Strathcona Regional Trail - Asphalt Print	1⇒	Complete
• Strathcona Public Services Yard (SPSY) modernization	1⇒	In progress
• Temporary Indigenous Project - Community Centre*	1⇒	In progress
• Temporary Indigenous Project - Sherwood Park Arena*	1⇒	In progress
• Temporary Art Installation - 2023 Special Olympics (moonGARDEN)*	1⇒	In progress
• New Mural Project - 2023 Special Olympics Alberta Winter Games*	1⇒	In progress
• River Valley Alliance - Pedestrian Bridge	2⇒	In progress
• Ardrossan Bridge - handrail inserts	2⇒	In progress
• The Pointe - Agricultural Facility	2⇒	
• Sherwood Park Arena / Sports Centre	2⇒	
• Strathcona Olympiette Centre	2⇒	
• Strathcona Wilderness Centre - Information Centre	3⇒	
• Indoor Field House	3⇒	
• Sally Stewart Park	3⇒	
• Cultural venue expansion	3⇒+	
• Strathcona County Museum and Archives	3⇒+	
• Centennial Park	3⇒+	

* = new initiative added



FISCAL RESPONSIBILITY

5.10: Asset management

- Deermound Dog Off-leash - parking lot expansion*
- Festival Place - recladding, box office, accessible seating enhanced*
- Millennium Place - flooring replacement*
- Broadmoor Tennis Club - tennis court replacement
- St. Nicholas - tennis court replacement*
- Hastings Lake - tennis court replacement*
- Emerald Hills Sports Pavilion - turf replacement*
- Strathcona Athletic Park - track replacement*
- Ardrossan Recreation Complex - curling floor replacement*

Timing

Status

1⇒

Complete

1⇒

Complete

1⇒

Complete

1⇒

In progress

2⇒

2⇒

3⇒

3⇒

3⇒

* = new initiative added



Festival Place - modernization

Action plan

FISCAL RESPONSIBILITY		Timing	Status
	• Playground replacements (three per year)		
	1. Davidson Creek School	1⇒	Complete
	2. Malvern Park	1⇒	Complete
	3. St. Luke Catholic School	1⇒	Complete
	4. Craigavon Park	1⇒	Complete
	5. Gillies Park	1⇒	Complete
	6. St. Nicholas Catholic School (formerly Jean Vanier)	1⇒	Complete
	7. Antler Lake Community	1⇒	Complete
	8. Circlewood Park in Brentwood	1⇒	In progress
	9. Mills Haven School	1⇒	Complete
	10. Collingwood Cove	2⇒	
	11. Ardrossan Elementary	2⇒	
	12. OLPH Catholic School	2⇒	

* = new initiative added



New skate spot - Strathcona Athletic Park



Cross country ski trails - Broadmoor Recreation Complex



Mills Haven - playground replacement



Antler Lake - playground replacement



FISCAL RESPONSIBILITY

	Timing	Status
<ul style="list-style-type: none"> Parks and Trails (lifecycle) 		
1. Chrenek Estates Trail	1⇒	In progress
2. Wye Crossing Trail	1⇒	In progress
3. Biodiversity Trail	1⇒	In progress
4. JR Aggregate Trail	1⇒	In progress
5. Heritage Hills Wetlands / Foxhaven Wetlands	2⇒	
6. Foxboro Park	2⇒	
7. Deermound Dog Off-leash Park	2⇒	
8. Sherwood Park Natural Area	2⇒	
9. Ball Lake Island Trail	2⇒	
10. Bike Skills Park	2⇒	



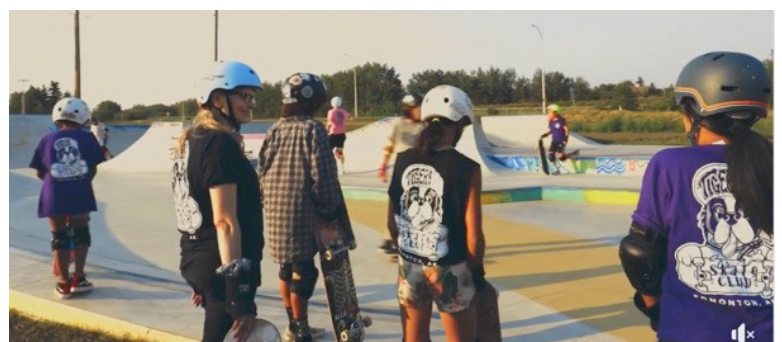
Kinsmen Leisure Centre - new universal changeroom



Deermound dog off-leash area - parking lot expansion



Josephburg - new outdoor pickleball courts



New skateboard park and youth public art



STRATHCONA COUNTY

