

Council Priority Funds – Application

(Page 2 of 2)

PRIORITY FUND INFORMATION – Completed by ApplicantOrganization Name Brookville Community LeagueAddress 53203 Range Road 212

Street and number

Subdivision if rural

City or town ArdrossanProvince AlbertaPostal code T8G 2B5Contact person Lisa SargentTelephone (780) 554-1436Email address (optional) lisaforbrookville@gmail.comProject Type ☐ Event ☐ Project ☒ ExpenseAmount Requested \$ 7453.43

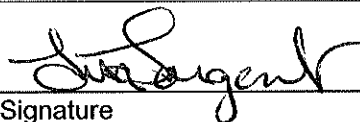
Brief description of request

The Brookville Community League would like to have a permanent fire pit installed at Brookville Hall by Recreation Parks and Culture.

We have also been advised by the Public Health Inspector that we are not in compliance with the Alberta Health Services dishwashing requirements and we need to install a dishwasher.

Lisa Sargent

Print name



Signature

September 26/22

Date

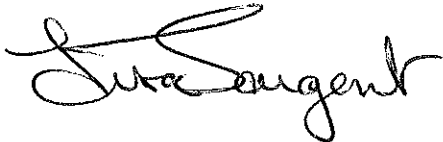
Please remember to attach a proposed budget and request letter to this request.Number of attached pages 5**Collection and use of personal information**

Personal information is collected under the authority of section 33(c) of the *Freedom of Information and Protection of Privacy Act* and will be used to manage and administer Council Priority Funds. Please be aware that information provided may be made public. If you have questions regarding the collection, use or disclosure of this information, contact Vicky Cushman at 780-464-8098.

Council Priority Funds – Application

Budget Breakdown

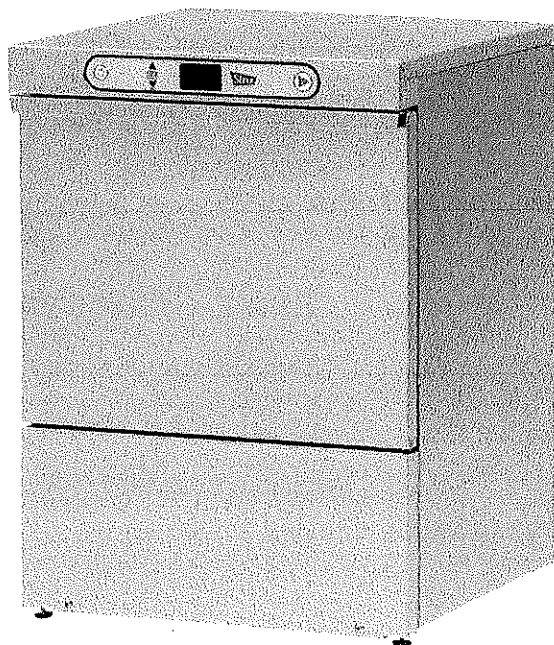
Strathcona County	
Standard Permanent Fire Pit Supply and Install	\$2,099.48
Nella West Food Equipment	
Stero SUH-1 Undercounter High Temperature Dishwasher	\$5,099.00
	\$ 254.95 GST
Total Cost =	\$7,453.43

A handwritten signature in black ink, reading "Lura Sargent". The signature is written in a cursive style with a large, stylized initial "L".



STERO SU

HOT AND COLD UNDERCOUNTER



STANDARD FEATURES

- 31 racks per hour rate – SUH
- 33 racks per hour rate – SUL
- .78 gallons of water per rack
- Hot water or chemical sanitizing units available
- Low chemical alert indicators
- Booster heater capable of 70° rise, provided on SUH models
- Rinse Assurance ensures 180° final rinse
- Self-priming chemical pumps
- Error notification
- Digital cycle/temperature display
- Interchangeable upper and lower wash and rinse arms
- Pumped drain
- Pumped rinse
- 17" door opening
- Automatic tank fill
- Chemical pumps standard

OPTIONS & ACCESSORIES

- Power cord kits
- Drain water tempering kit
- 6" base
- 17" stand

MACHINE RATINGS	SUH	SUL
	Hot Water Sanitizing	Chemical Sanitizing
Racks per Hour Rate	31	33
Cycle Time – Seconds	116	109
Tank Heat	1.8 KW	1.8 KW
Electric Booster Heater	4.9 KW	N/A
Water Usage Per Rack – Gallons	.78	.89
Peak Drain Flow – Gallons per Minute	4.0	4.0
Incoming Water Temperature Required (minimum)	110°	120°

STERO SU

HOT AND COLD UNDERCOUNTER



NOTICE

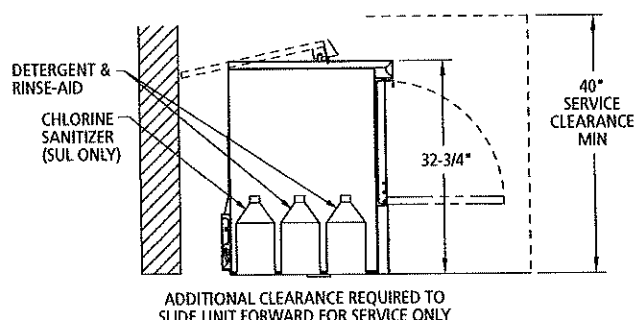
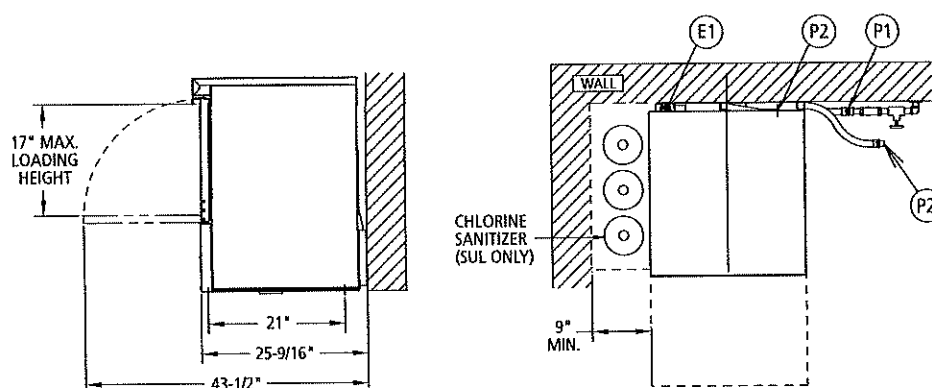
Required flowing water pressure to the dishmachine is 15-65 PSIG. If pressures higher than 65 PSIG are present, a pressure regulating valve must be installed in the water line to the dishmachine (by others).

Pressure gauge not required on pumped rinse machines.

Important: Chemical containers should be placed no higher than 10" above floor.

If chemical containers are to be placed in cabinet adjacent to machine, a 1/2" dia. hole is required in the cabinet to run chemical supply line.

Use only 6% or 8.4% sodium hypochlorite (liquid bleach) as sanitizing chemical to insure proper operation of dishmachine (SUL only).



NOTES:

1. All vertical machine dimensions taken from floor may be increased by 1".
2. Moist air escapes from the door. Use only moisture resistant materials adjacent to dishmachine sides and top.
3. A vent hood is not recommended above the undercounter dishmachine since it does not produce excessive vapors.

PLUMBING NOTES:

1. Water hammer arrestor (meeting ASSE-1010 Standard or equivalent) to be supplied (by others) in common water supply line at service connection.
2. Recommended water hardness to be 3 grains or less for best results.
3. If drain hose is looped above a sink, the loop must not exceed 38" AFF.

⚠ WARNING

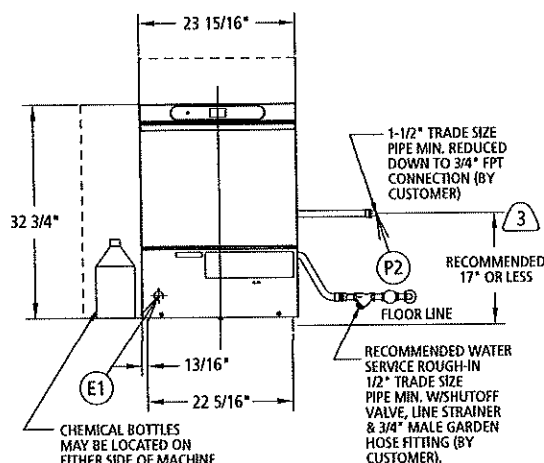
Electrical and grounding connections must comply with the applicable portions of the National Electrical Code and/or other local electrical codes.

Plumbing connections must comply with applicable sanitary, safety and plumbing codes. Drain and fill line configurations vary, some methods are shown on this drawing.

MODEL	VOLTS/HERTZ/PHASE	RATED AMPS	MIN SUPPLY CKT CONDUCTOR AMPACITY	MAX PROTECTIVE DEVICE
SUH	120/208-240(3W)/60/1*	30.5	40	40
SUL	120/60/1	15.4	20	20

NOTE: FOR SUPPLY CONNECTIONS, USE COPPER WIRE ONLY RATED AT 90°C MINIMUM. ACCESSORY CORD KIT AVAILABLE FOR ALL MODELS.

* THIS SYSTEM REQUIRES THREE POWER WIRES WHICH INCLUDES A CURRENT CARRYING NEUTRAL, AN ADDITIONAL FOURTH WIRE MUST BE PROVIDED FOR A MACHINE GROUND.



NOTE: Certain materials, including silver, aluminum and pewter are attacked by sodium hypochlorite (liquid bleach) in the chemical sanitizing dishwasher mode of operation. Water hardness must be controlled to 3 grains OR LESS for best results.

CONNECTION INFORMATION

(AFF = ABOVE FINISHED FLOOR)

LEGEND

- E1 ELECTRICAL CONNECTION: 1-3/8" DIA. HOLE FOR 1" TRADE SIZE CONDUIT; 4-5/8" AFF
- P1 SINGLE FILL AND RINSE CONNECTION: 3/4" FEMALE GARDEN HOSE FITTING ON 6' LONG HOSE SUPPLIED WITH MACHINE;
- P2 DRAIN CONNECTION: 5/8" BARB FITTING WITH 6' LONG HOSE SUPPLIED WITH MACHINE.

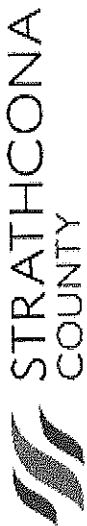
⚠ WARNING

Do not premix other chemicals and sodium hypochlorite (liquid bleach). Mixing may cause hazardous gas to form (SUL only).

SHIPPING WEIGHTS		
MODEL	NET WEIGHT	DOMESTIC SHIPPING WEIGHT
SUH	150 lbs.	170 lbs.
SUL	150 lbs.	170 lbs.

OVERALL DIMENSIONS: 32-3/4" H x 23-15/16" W x 25-9/16" D

In line with its policy to continually improve its products, Stero reserves the right to change materials and specifications without notice.



Quote

2025 Oak Street Sherwood Park, Alberta T8A 0W9
G.S.T. # R122617160
Phone 780-467-2211

Vendor

Sale subject to availability. Quote valid for 30 days

Attention: Patty Hoy
Brookville Permanent Fire Place

Description	Quantity	Price	Amount
7211 SC Standard Permanent Fire Pit Supply and Install	1	\$2,099.48	\$2,099.48
Total			\$2,099.48

We thank you for the opportunity to provide this quotation to you. Should you have any questions or require any further information, please do not hesitate to contact us at (780) 400-2063