



Growth Plan Update

Capital Region Board



Strathcona County Council
March 8, 2016



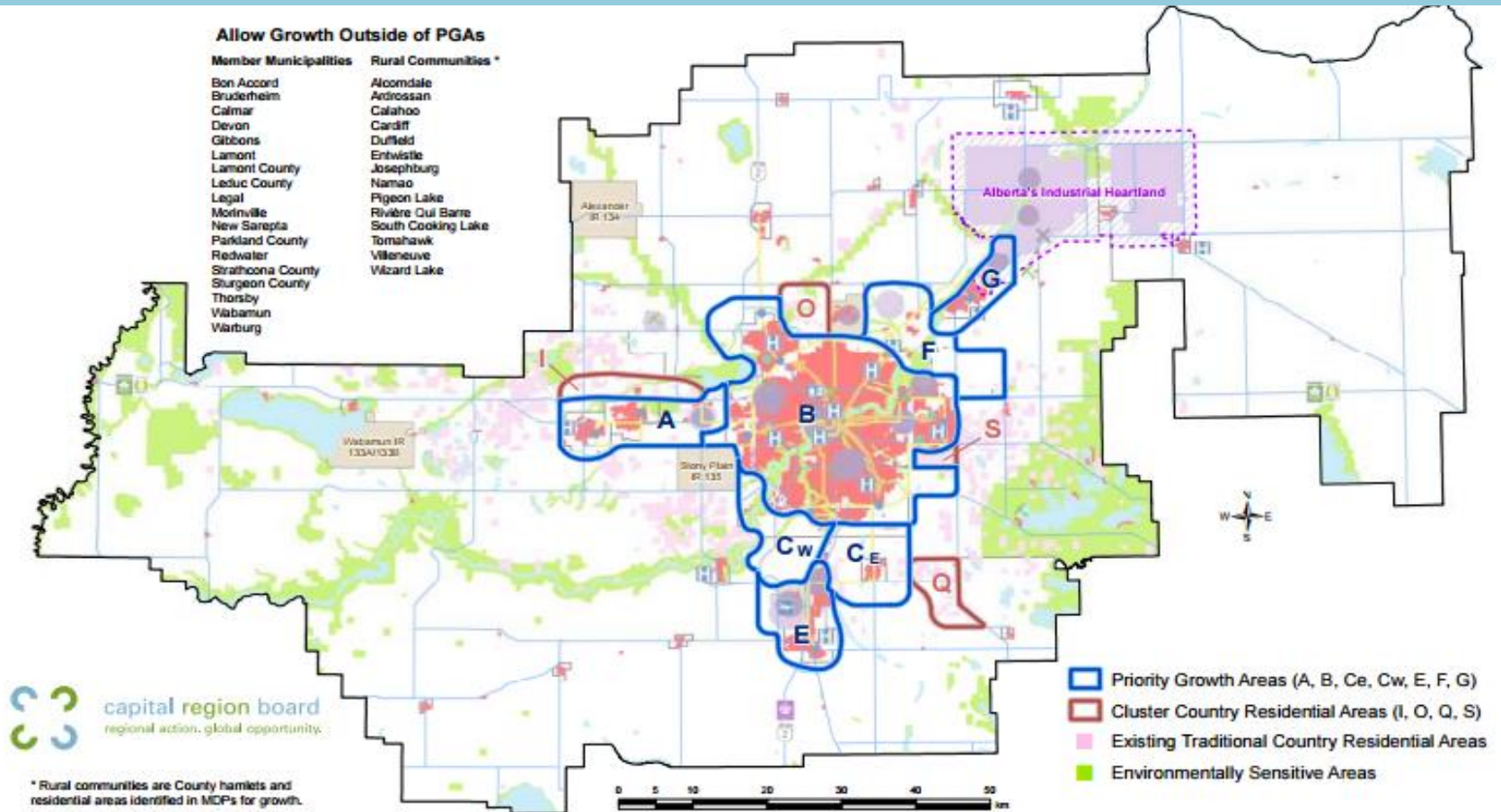
Why a regional Growth Plan?

- Population Growth from 1.2 to 2.2 Million
 - Strathcona County- 96,800 to 160,000
- Job Growth from 745,000 to 1.2 Million
 - Strathcona County- 40,000 to 68,671
- GDP – 40 % AB - ? By 2044
 - Economic Drivers?
- Costs of Growth



Land Need – Current State

- Total Land Need - 764.8 Quarter Sections of Land will be consumed under the current Plan in effect.
- Country Residential 1.57 ha of *unabsorbed* to 1 Ha *absorbed*, 2009



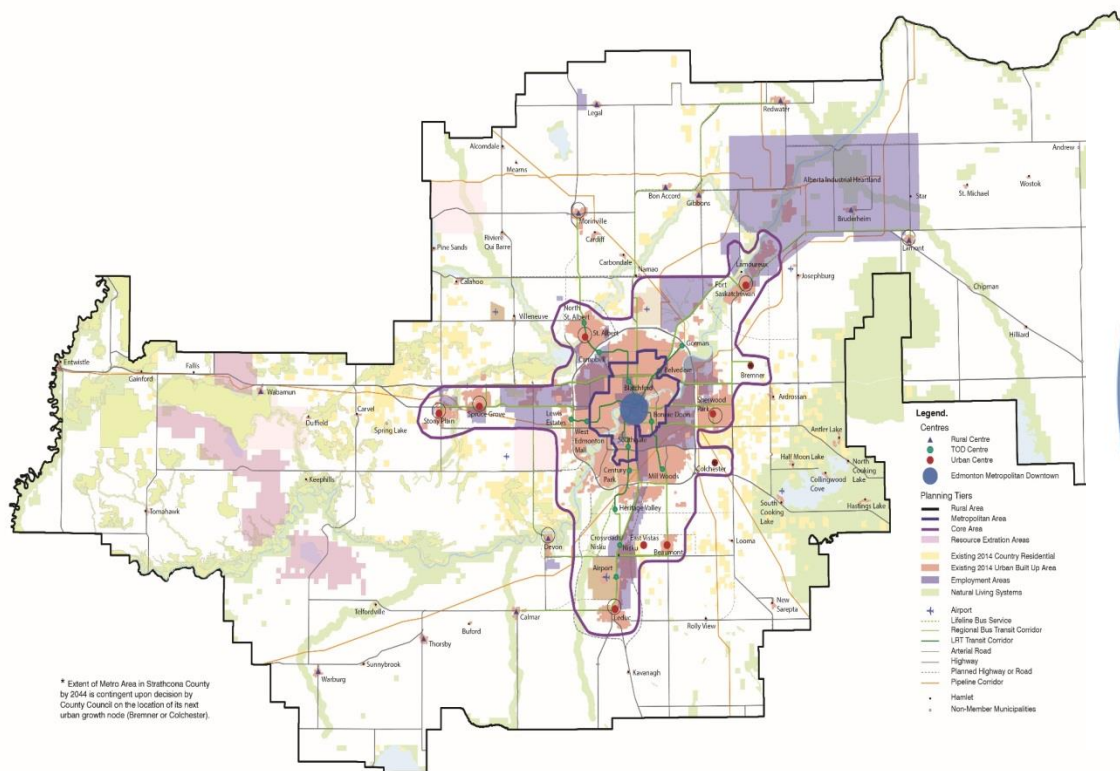
Land Need Analysis – Opportunity

Land Need Scenario	Overall Land Need (Qtrs)	Lands Maintained for Agricultural (Qtrs) <i>Base Case less Scenario</i>	Increased efficiency (%)
Base Case (“Business as Usual”)	764.8	—	—
Scenario 1 (“Moderate Change”)	670.1	94.7	12%
Scenario 2 (“Rural Redistribution”)	544.3	220.5	29%
Scenario 3 (“Significant Change”)	355.8	409	53%

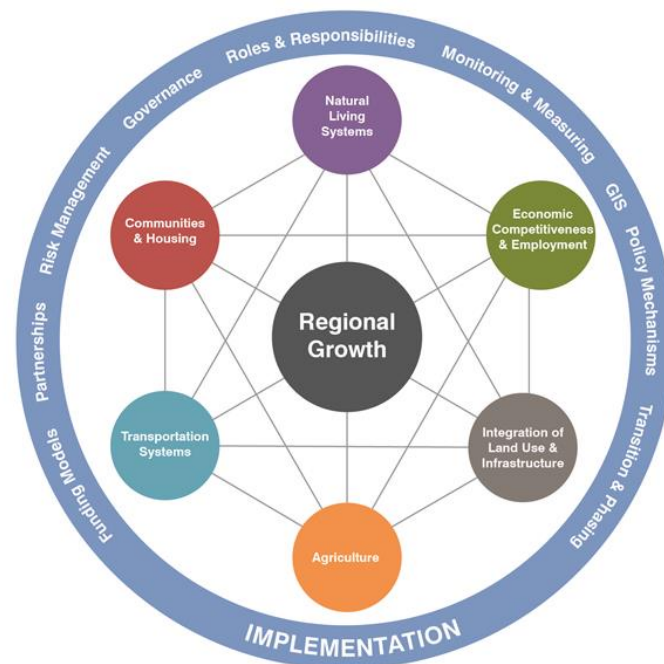
Guiding Principles

1. Collaborate and coordinate as a Region to manage growth responsibly.
2. Promote global economic competitiveness and regional prosperity.
3. Achieve compact growth that optimizes infrastructure investment.
4. Ensure effective regional mobility.
5. Recognize and celebrate the diversity of communities and promote an excellent quality of life across the Region.
6. Ensure the wise management of prime agricultural resources.
7. Protect natural living systems and environmental assets.

Policy Areas – Integrated Plan



* Extent of Metro Area in Strathcona County by 2044 is contingent upon decision by County Council on the location of its next urban growth node (Brenner or Colchester).





Natural Living Systems

1. Protection , (restoration) of Natural Living Systems
2. Cumulative Effects Management
3. Manage effects of Climate Change
4. Protect air shed and water shed



Economic Competitiveness & Employment

1. Regional Economic Development Strategy
2. Build on our strengths to achieve Diversification
3. Deliver on Infrastructure
4. Quality of Life



Integration of Land Use and Infrastructure

1. Responsible Growth
2. Efficient Use of infrastructure
3. Phased Greenfield Development
4. Quality of Life

Policy Areas | Policy Directions



Agriculture

1. Preserve and Grow a viable Agriculture Sector
2. Reduce fragmentation & conversion
3. Implementation Tools



Transportation Systems

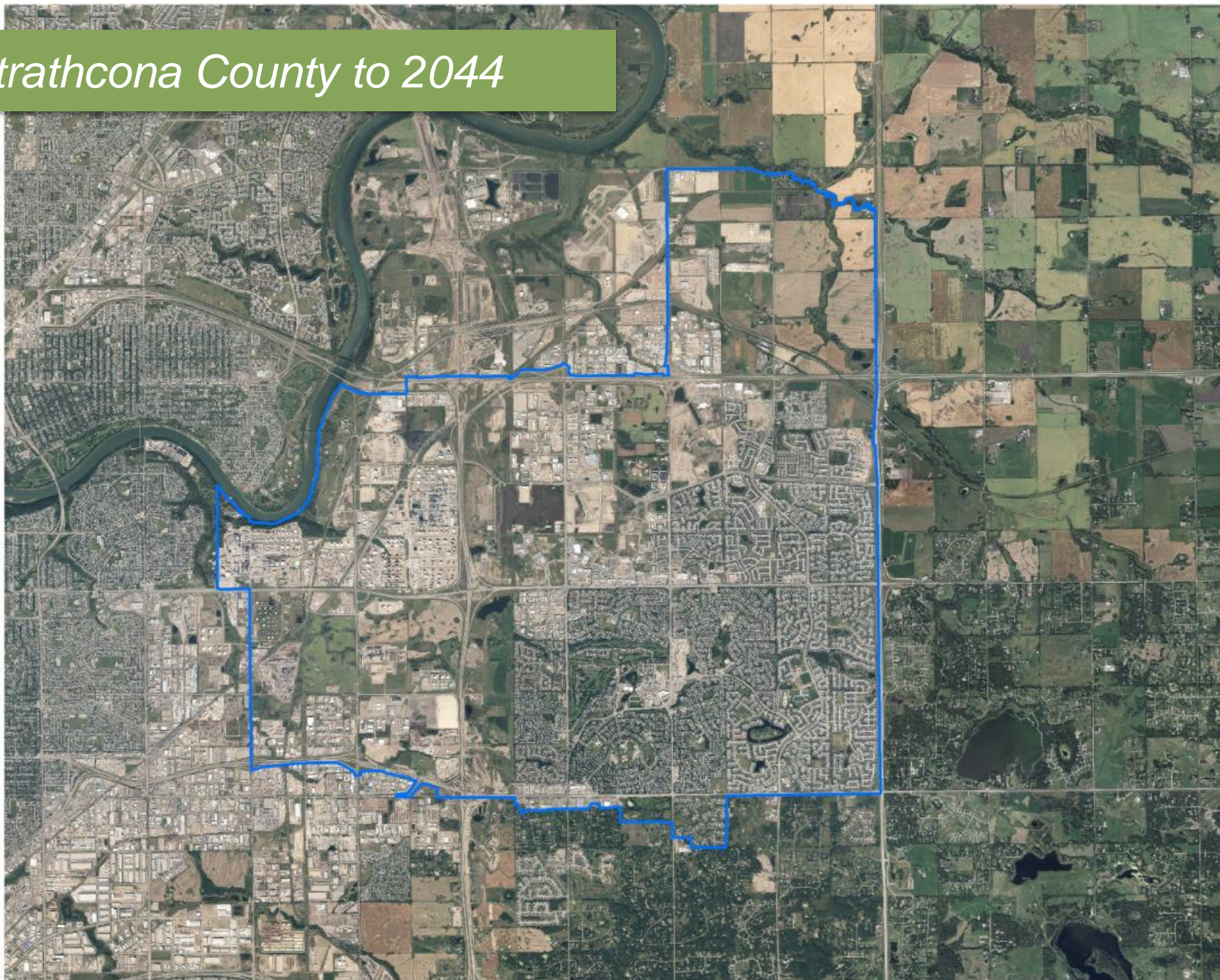
1. Efficient Mobility throughout the Region
2. Mode Shift to Public Transit
3. Support Region's Economic Engines



Communities and Housing

1. Complete Communities based on levels of service
2. Direct growth to existing Urban and Rural Centers
3. Range of Housing Options and affordability
4. No New Freestanding Urban Areas and No New Country Residential Development

Strathcona County to 2044



Growth Plan 2.0 – Next Steps

Growth Plan Update Outline



Key Outcomes



Phase 3&4 Policy Development and Implementation Plan

Plan Policies (March/April)



Implementation Plan (March/April)



Draft Plan (May, July)

Final Plan (September)

Plan APPROVAL (October)

Engagement Plan (Mar-Oct)

CAO/ Municipal Admin

External Stakeholder (April)

Spring Road Show (June)

Board Engagement (May-July)

GOA X-Ministerial Committee



Thank YOU on behalf of the Capital Region Board

To stay current on what's happening with the Growth Plan Update
Visit: capitalregionboard.ab.ca/growth-plan-update "what's new"