

# Community Safety and Well-being update

Priorities Committee Meeting  
June 27, 2023

# CSWB Stewardship Committee

## CSWB Stewardship Committee

**Social Framework Leadership Table**

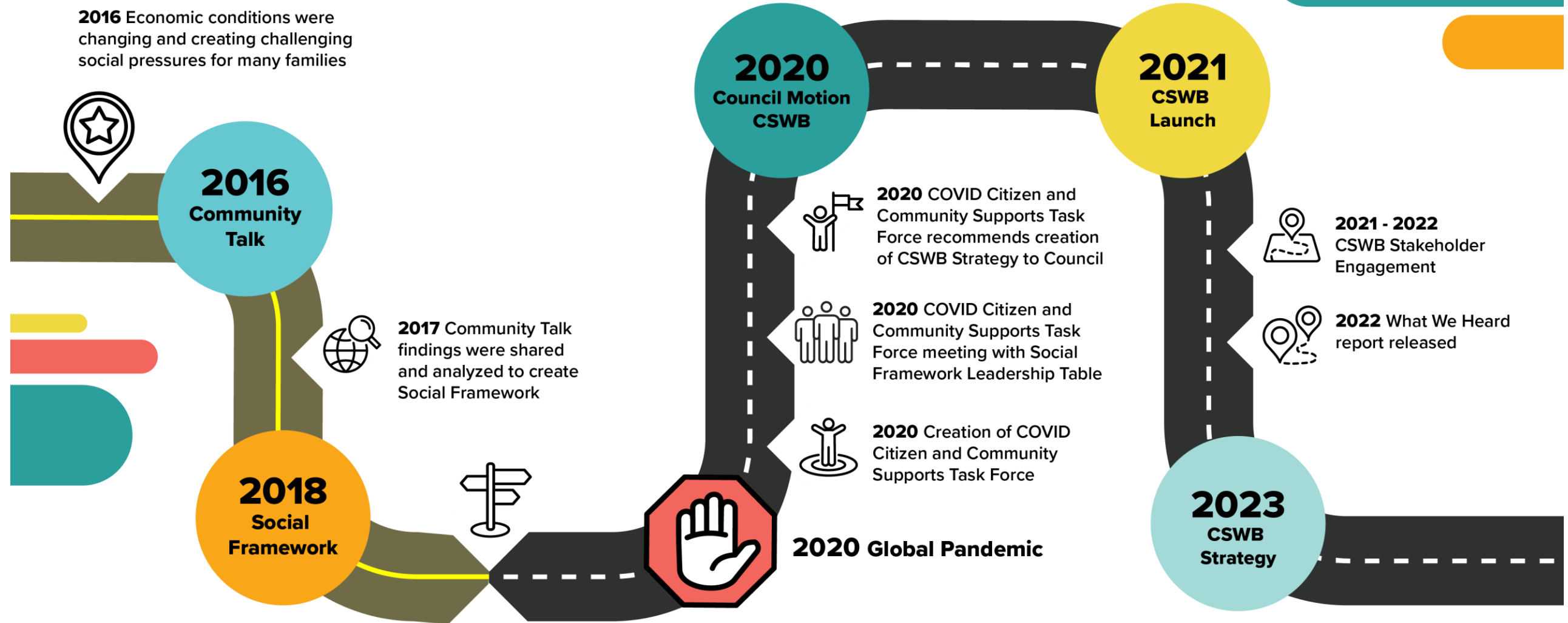


**CSWB Steering Committee**

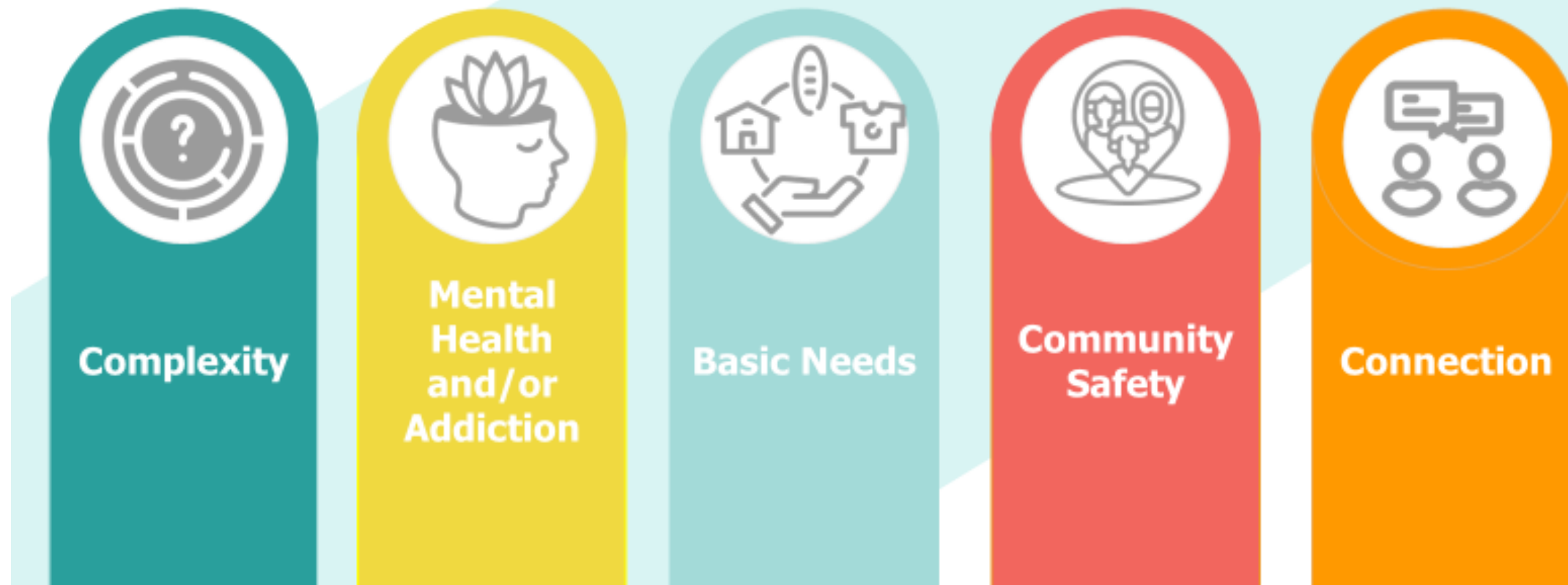


- A Safe Place
- Alberta Health Services
- altView Foundation
- BGC Strathcona County
- Big Brothers Big Sisters Strathcona County
- Brittany Lane Housing Co-op
- Elk Island Catholic Schools
- Elk Island Public Schools
- Family and Community Services
- Habitat for Humanity
- Heartland Housing Foundation
- Linking Generations
- Masjid in the Park
- Ministerial Association of Strathcona County
- Next Gen
- Northern AB Cooperative Housing Association
- Parents Empowering Parents
- Robin Hood Association
- SAFFRON Centre
- Sherwood Care
- Sherwood Park and District Chamber of Commerce
- Sherwood Park Primary Care Network
- Strathcona County Communications
- Strathcona County Diversity Committee
- Strathcona County Emergency Services
- Strathcona County Food Bank
- Strathcona County Library
- Strathcona County RCMP and Enforcement
- Strathcona County Recreation Parks and Culture
- Strathcona County Transit
- Volunteer Strathcona
- WE Seniors Strathcona County

# The journey to CSWB



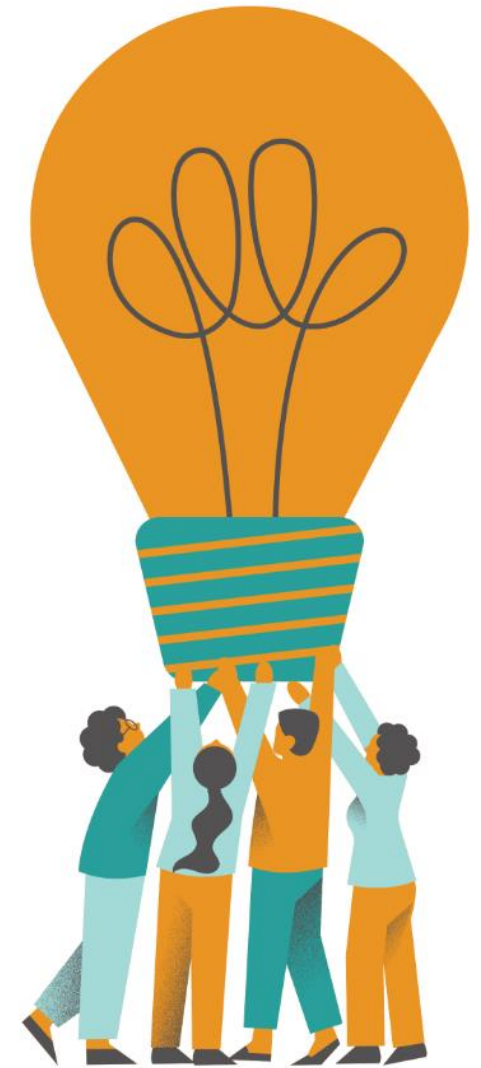
# CSWB What We Heard report



# CSWB Strategy vision

To build a community where everyone feels safe, respected and heard, where differences are seen and celebrated where we all know we belong, and where we all can thrive.

And to work together across sectors in new and innovative ways to help individual organizations succeed in their mandates and to find ways to better support belonging, safety and well-being in our community.



# CSWB Strategy proposed outcomes

## Basic Needs

All community members have their basic needs met

## Complexity

All community members, including those with complex needs, are supported by a responsive system of programs and services that is straightforward to navigate

## Mental Health/Addictions

All community members experience mental well-being and have access to mental health and addiction support when needed

## Community Safety

All community members are able to live as their authentic selves without fear of harm, rejections, exclusion, or discrimination

## Connection

All community members are connected to neighbours and other community members and can access support in the community when they need it

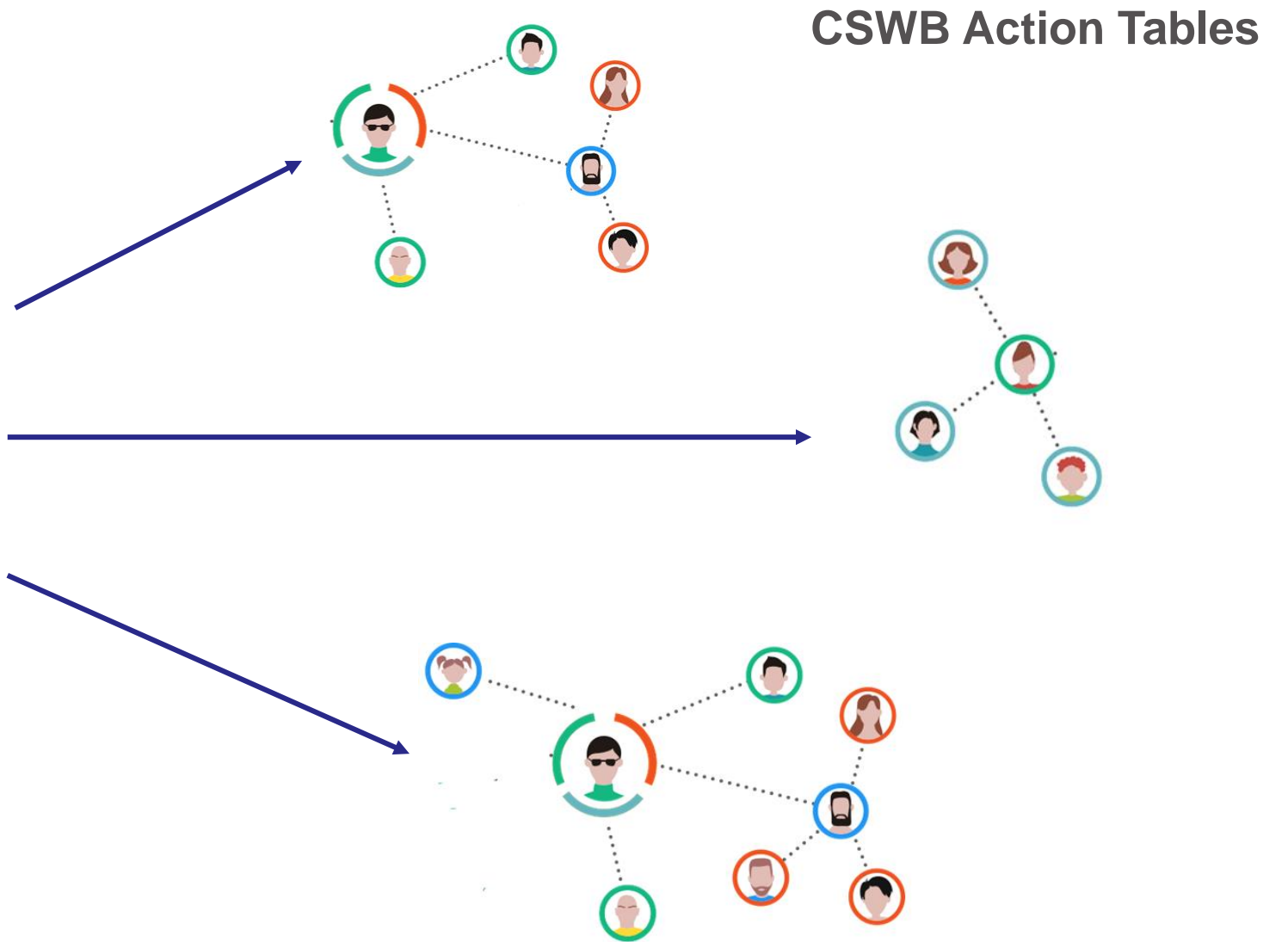




# CSWB Action Table approach



CSWB Stewardship Committee



# CSWB next steps



- Continued action table mobilization



- CSWB Evaluation



- Ongoing touch points with Council



**Thank you!**