



***The North Saskatchewan
Watershed Alliance
Overview and Highlights 2023***

COUNCIL PRESENTATION



NSWA

**NORTH SASKATCHEWAN
WATERSHED ALLIANCE**



Territorial Acknowledgement

The North Saskatchewan Watershed Alliance acknowledges that the traditional land on which our watershed resides is in Treaty 6 Territory, Treaty 8 Territory, and the Métis Homeland. We deeply respect and wish to honour the diverse Indigenous Peoples whose ancestors' footsteps have marked this territory since time immemorial, including the Nêhiyawak/Cree, Denesuliné/Dene, Anishinaabe/Saulteaux, Nakota Isga/Nakota Sioux, and the Niitsitapi/Blackfoot peoples. We further acknowledge this territory as the Métis homeland and the home of one of the largest communities of Inuit south of the 60th parallel.



OVERVIEW

- 1. About NSWA**
- 2. Project Highlights**
- 3. Benefits of Partnership**





NSWA

NORTH SASKATCHEWAN
WATERSHED ALLIANCE

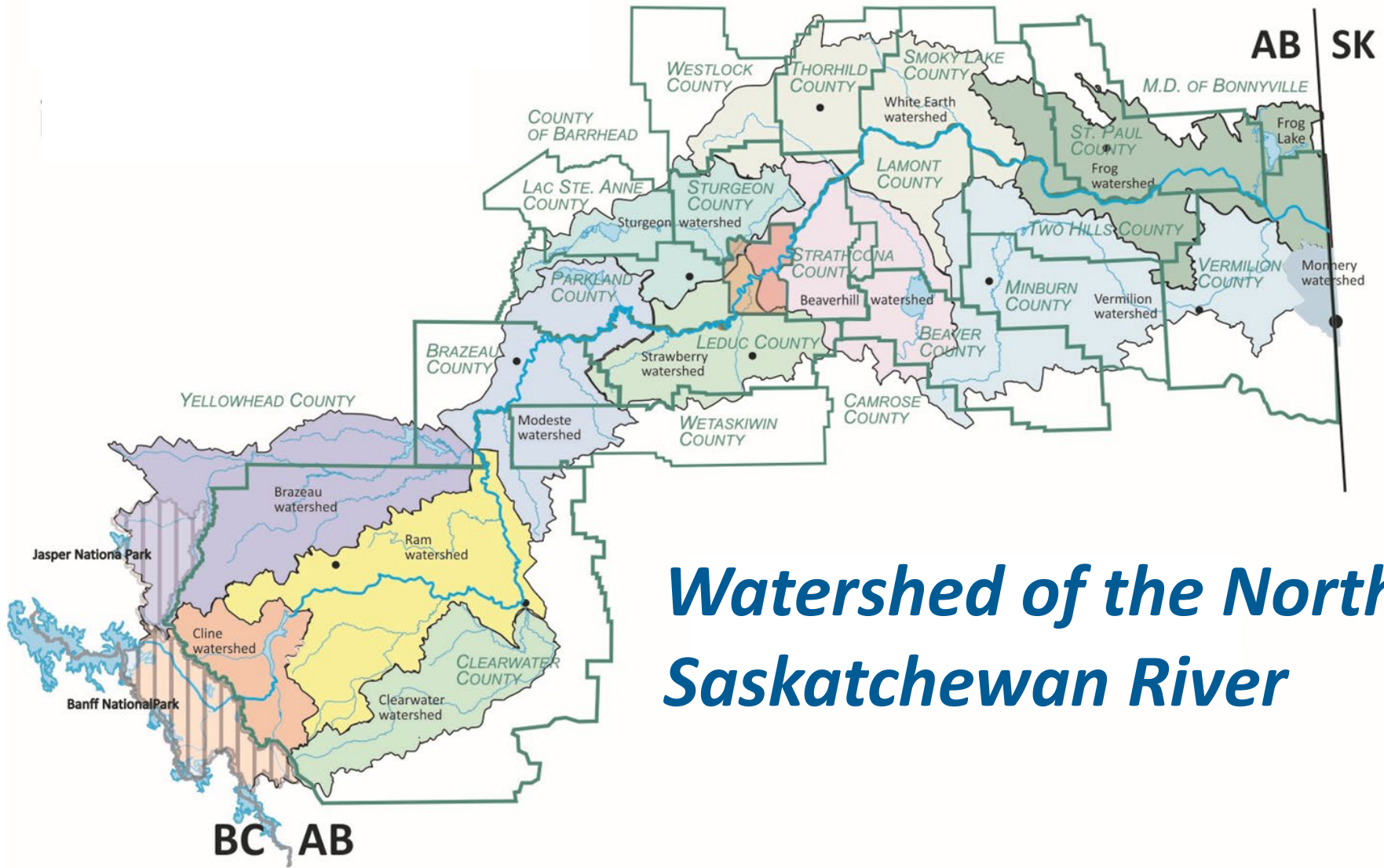
**Working to improve the
health of our watershed.**

Collaboration – Planning – Conservation – Education

NSWA – The Organization

- Non-Profit, Charitable Organization
- Multi-sector Board of Directors
- Strongly supported by municipalities
- Designated Watershed Planning & Advisory Council (WPAC) – Water for Life Strategy





Watershed of the North Saskatchewan River

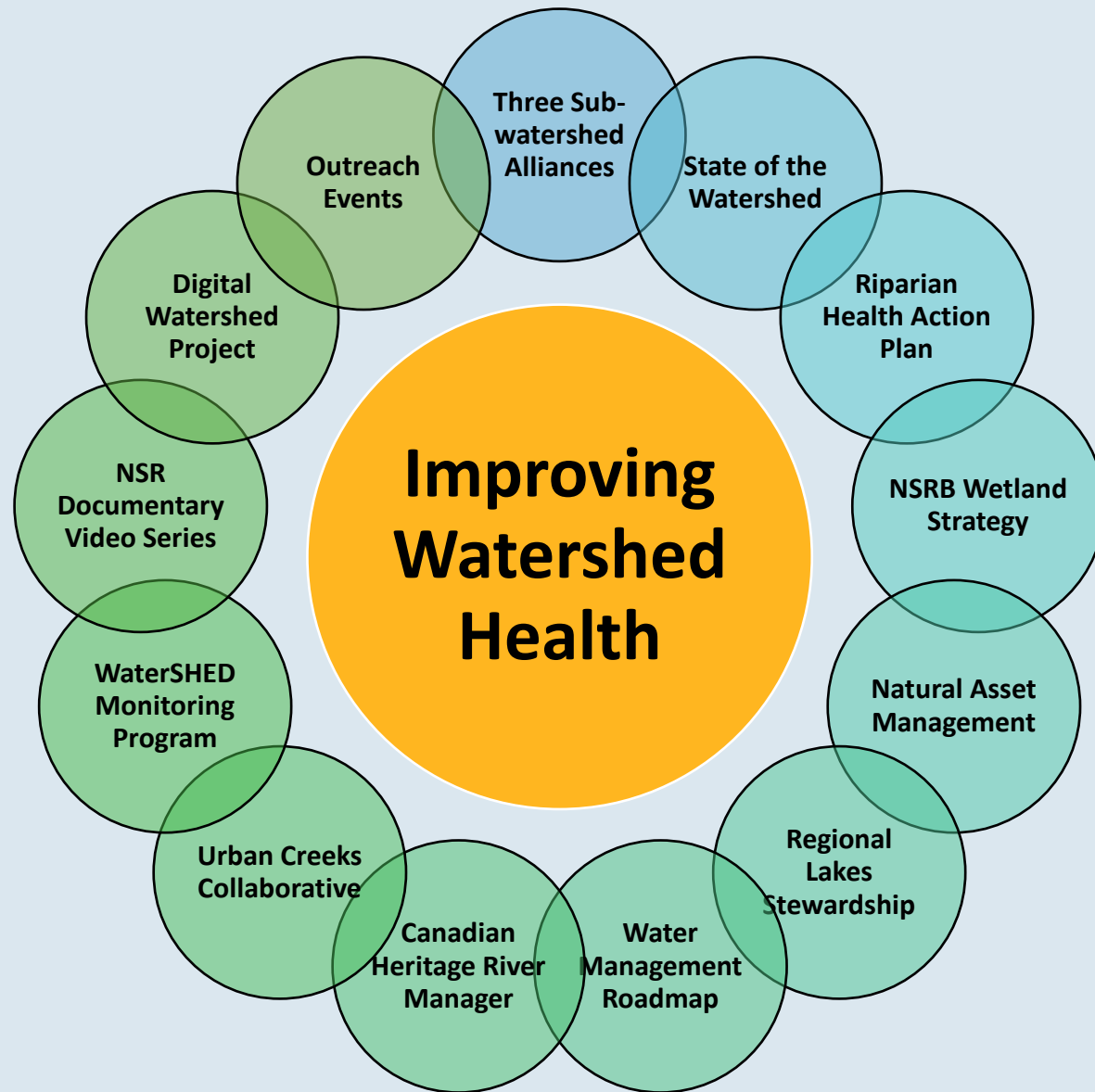




KEY RESPONSIBILITIES

- 1** Collaborative *'Sparkplug'*
- 2** Watershed Assessment and Planning
- 3** Literacy, Education, Outreach
- 4** Tools and Technology







STATE OF THE WATERSHED

STATE OF THE WATERSHED

- PURPOSE

- *Assess aspects of watershed health as a baseline to determine if and what actions are needed to improve watershed health.*

- APPROACH



- ***Freshwater Health Index*** (*Conservation International*) to score *watershed vitality, services, and governance.*
 - Scientifically supported
 - Scalable
 - Consistent and repeatable
 - Stakeholder-driven



NSWA
NORTH SASKATCHEWAN
WATERSHED ALLIANCE

NORTH SASKATCHEWAN WATERSHED ALLIANCE

www.nswa.ab.ca

WATERSHED



The North
Saskatchewan
Watershed
Alliance

NSWA
NORTH SASKATCHEWAN
WATERSHED ALLIANCE



**ENGAGING
WATERSHED RESIDENTS**

ENGAGING RESIDENTS

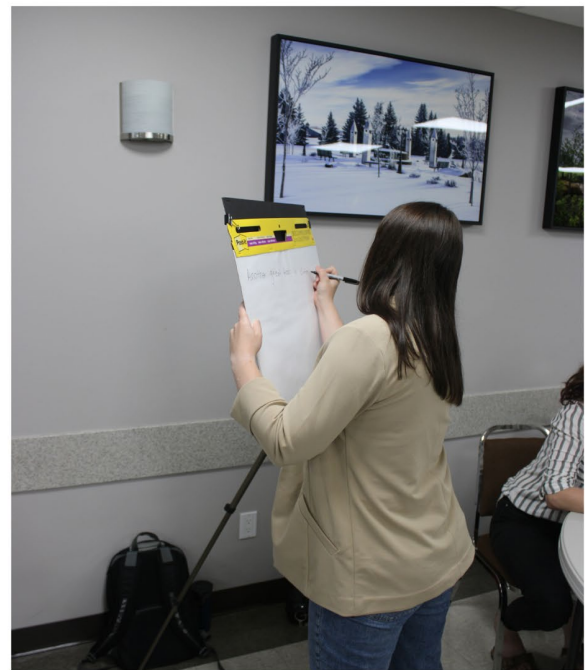
- PURPOSE

- *Raising the level of awareness, interest, and understanding of watershed stewardship and science.*

- APPROACH

- *Community events*
- *Workshops and Webinars*
- *Newsletters*
- *Social Media*







A WETLAND STRATEGY FOR THE NORTH SASKATCHEWAN WATERSHED



WETLAND STRATEGY

Strategy to Improve Wetland Management in the NSR Watershed

- **PURPOSE**

- *Set collaborative direction for the watershed to advance wetland management.*

- **APPROACH**

- *Define a regional vision for wetlands.*
- *Define objectives and targets among municipalities.*
- *Develop more consistency between programs.*
- *Build technical capacity and knowledge.*





REGIONAL LAKE STEWARDSHIP PROJECT



REGIONAL LAKES STEWARDSHIP

- PURPOSE
 - *Coordinate stewardship actions across lakes.*
- APPROACH
 - *Take a regional approach to lake issues and concerns.*
 - *Coordinated support for lake stewardship groups.*
 - *Community of Practice for lake stewards.*
 - *Restoration demonstration projects.*





RIPARIAN HEALTH ACTION PLAN

RIPARIAN HEALTH ACTION PLAN

Partner
Municipalities

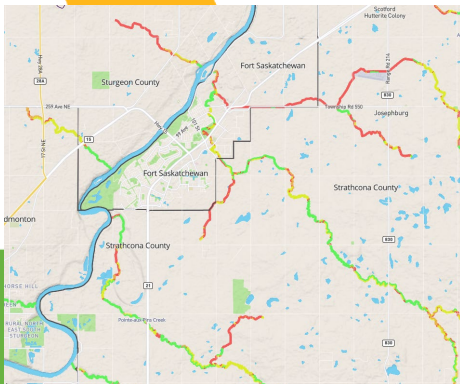


- **PURPOSE**

- *Scalable assessment of riparian health on which to educate, plan, build policy, and restore priority areas.*

- **APPROACH**

- *Cost-effective assessment using satellite data.*
- *Set targets for riparian health and align land and water planning.*
- *Develop tools for municipal planning and decisions.*
- *Riparian Web Portal to universally share knowledge.*



**RIPARIAN
WEB PORTAL**

RIPARIAN HEALTH ACTION PLAN

Policy Alignment

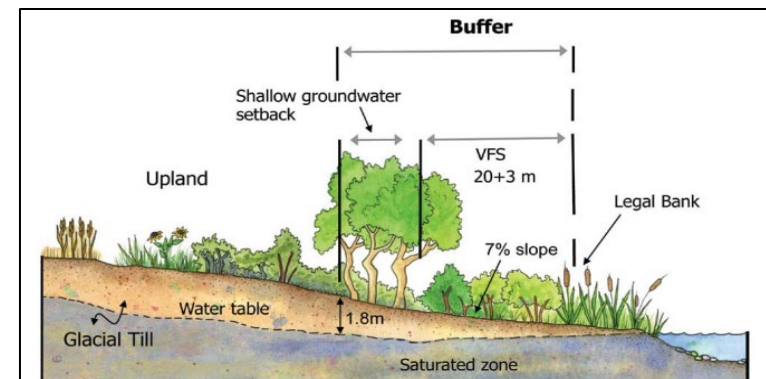
- Over 20 sets of municipal bylaws
- Definitions, consistency
- Suggest language for new bylaws

Setback Advisor

- High slope areas – potentially unstable
- Low slope areas – potential to inundate

Current Land Use Bylaw Regulations

PLWMP Objectives	Leduc County	Co. of Wetaskiwin	Argenti a Beach	Crystal Springs
Do the LUBs include a requirement for a development permit for clearing vegetation?	YES	YES, if it affects drainage	YES	DPs include landscaping and surface draining plans
Do the LUBs include a minimum requirement for % of vegetative cover (or landscaping) on a lot?	YES, - in Rural Residential District	YES - in LM, LR, RCY, WP Districts		
Do the LUBs regulate a minimum % of native vegetation in landscaping requirements?	Not as a percentage	YES - in LM, LR, RCY, WP Districts		
Do the LUBs include requirements to include LID tools in SWMPs?	No, County Standards only			
Do the LUBs discourage or restrict the removal of healthy tree stands or shelterbelts?	YES	YES		
Do the LUBs include, as				



Buffer width calculation for Figure 3

Setback	Width (metres)
Vegetated filter strip (glacial till)	20
Slope factor, glacial till (7 - 5) x 1.5	3
Setback to avoid shallow groundwater ¹³	10
Total buffer width	33



BENEFITS OF PARTNERSHIP



BENEFITS OF PARTNERSHIP

DRIVING COLLABORATION



We facilitate inter-municipal partnerships that address watershed issues

GRANT SUPPORT



NSWA has coordinated over \$3 million in grant funds for municipalities

EXPERTISE & PROJECT MANAGEMENT



NSWA staff have knowledge of municipal watershed issues

EDUCATION & AWARENESS



We provide resources to help residents and council understand watershed issues



Stay Connected!



www.nswa.ab.ca



north_sask_river



NorthSaskRiver



@NorthSaskRiver



northsaskriver



NSWA

NORTH SASKATCHEWAN
WATERSHED ALLIANCE