



DOW

The Dow logo is a red diamond shape with the word "DOW" in white, bold, sans-serif capital letters. A small registered trademark symbol (®) is located at the bottom right of the diamond.

DOW CANADA UPDATE

Presentation to Strathcona County

June 18, 2024

Don Cameron, Alberta Operations Site Director
and Vice President, Dow Canada

STATEMENT ABOUT FORWARD-LOOKING STATEMENTS

- Some of our comments include statements about our expectations for the future. Those expectations involve risks and uncertainties. Dow cannot guarantee the accuracy of any forecasts or estimates, and we do not plan to update any forward-looking statements if our expectations change. If you would like more information on the risks involved in forward-looking statements, please see our annual report and our SEC filings.
- In addition, some of our comments reference non-GAAP financial measures.

AGENDA

- ← Dow's operations in Alberta's Industrial Heartland
- ← Our people, products and economic impact
- ← Path2Zero update
 - ↘ Why Alberta's Industrial Heartland
 - ↘ Site preparation and construction
 - ↘ Diamond Administration and Maintenance, Repairs and Operations (MRO) buildings
 - ↘ Traffic impacts
- ← Supporting Heartland communities

DOW'S OPERATIONS IN ALBERTA'S INDUSTRIAL HEARTLAND



OUR PEOPLE, PRODUCTS AND ECONOMIC IMPACT

People



83%
M&E



5%
EH&S



1%
R&D



11%
Corporate

Employee retention:

96%
(2024)

Best Workplaces™

Great Place To Work.

CANADA 2024

Products



Economic Impact (2023)

Annual economic contribution
(CDN, 2023)

Property taxes
\$10.8 million
Fort Saskatchewan

Salaries
\$106 million
Alberta

Contractor and vendor spending
\$186 million
Alberta

WHY ALBERTA'S INDUSTRIAL HEARTLAND

Feedstock Advantage

- High availability of ethane
- Low natural gas prices
- Canadian upstream and midstream companies focused on CO₂ reductions



Growth-Enabling Infrastructure

- Midstream growth in pipelines and natural gas liquids separation
- Existing CO₂ capture, transportation and sequestration
- Access to extensive rail network and export terminal



Government Support

- Significant financial incentives that span municipal, provincial and federal levels
- Well-established carbon policies and regulations



Community Integrated Operations

- Longstanding track record of safety and reliability at Alberta Operations
- Supportive local partnerships with government and non-profits
- Business-friendly environment





Existing asset

New Dow asset

Third-party asset

1 Intake

5 Cogeneration

9 Solution polyethylene production

13 Existing rail

17 FS2 ethylene cracker

2 Pump house and water treatment

6 Energy Systems & Environment Operations

10 LP-8 gas phase polyethylene plant

14 Dow Diamond Centre and Maintenance, Repair and Operations

3 Air separation unit

7 Admin building

11 Solution polyethylene production

15 H₂ / CO₂

4 H₂ / CO₂

8 Maintenance & Emergency

12 Logistics & rail car wash and loading

16 FS1 ethylene cracker

SITE PREPARATION AND CONSTRUCTION



Construction workforce

- 500 by mid-year, 1000 by year-end

Site development activities in 2024

- Piling on all blocks for new assets
- Temporary power and fiber optic
- New gates for construction operational, including two new construction entrances on RR 220
- Training and badging centre secured
- Arrival of construction materials – pipe and steel

Recent milestones

- **FS2 cracker:** First production piling work started for the new ethylene cracker (April 2)
- **Utilities, Planning and Instructure:** 500,000 hours worked and one year of site development activities (June 14)

DIAMOND ADMINISTRATION AND MRO BUILDINGS

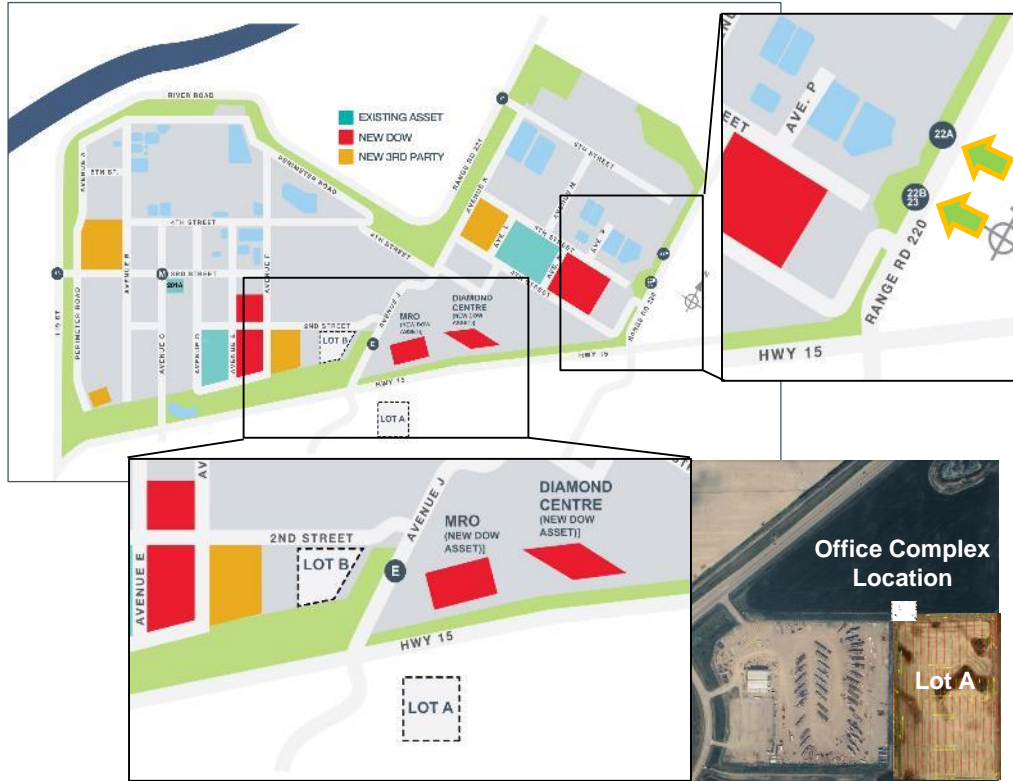


Ideal location

Close to the East entrance but outside plant fence-line.

Positioned for easy access off Highway 15.

TRAFFIC IMPACTS



Traffic Impact Assessment

New construction entrances

- New gates will be added along Range Road 220
 - Gate 22A
 - Gate 22B/23
- Shuttle services will enter the site from Range Road 220
- Construction will occur on Range Road 220 to accommodate additional shuttle and vehicle access, scheduled to be completed by mid-September

Park and ride

- Lot A (Engie lot)
- Lot B (within site)

SUPPORTING COMMUNITIES

Dow is proud to support Heartland communities through financial contributions, employee volunteerism and community engagement.



Life in the Heartland – Industry Info Eve

Strathcona Cyber Eagles Robotics at World's

Heartland Challenge: Strathcona Food Bank





THANK YOU!



@Dow_Canada

canada@dow.com

dowcanada.com