



Strathcona County

OPEN SPACE MASTER PLAN

Strathcona County Council
November 26, 2024

Agenda

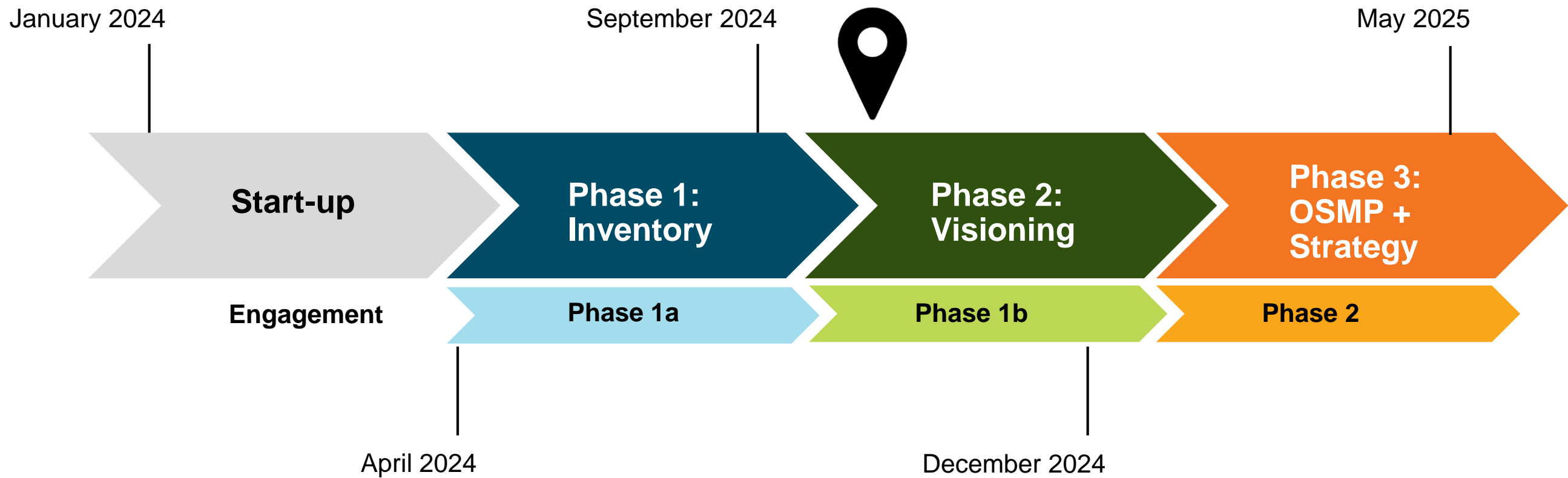
1. Welcome and introduction
2. Strathcona County Open Space Master Plan
 - Overview
 - Timeline
 - Progress
3. Key takeaways
4. What we heard in Phase 1a
5. Next steps

Project overview

The creation of Strathcona's Open Space Master Plan will help shape and guide the planning, design, implementation, management, and operations of an integrated open space network. This work includes:

- An **inventory of the County's existing designated public open spaces**, including its park system, the amenities it contains and other open spaces such as stormwater ponds, boulevards, and medians.
- An **assessment of park provisioning and amenity access** using a walkable catchment lens.
- An **assessment of Ecological Value** throughout the County to provide a lens to value these open spaces for the ecosystem services they provide.
- A **review of the County's existing policy framework** will be compared with other municipalities to identify other opportunities or approaches to the acquisition and management of the open space system.
- A **review of recreational trends across Canada** will highlight shifting practices and help to identify the changing needs of the County's residents

Project timeline



Project progress



Key tasks

- Define open space values
- Review of recreational trends
- Review of existing policy framework
- Analysis of existing conditions
 - Current demographics
 - Growth areas
 - Open space provisioning
 - Amenity provisioning
 - Environmentally Significant Areas

Up Next

- Interested parties and public engagement to confirm and supplement inventory and trends research
- Confirm project vision
- Establish key objectives of the Open Space Master Plan

Value of municipal open spaces

Strathcona County's open space system provides benefits to the well-being of both people and the environment which are a key component of urban and rural life.

- Improved quality of life and societal benefits
 - Physical and mental health
 - Social connection and community building
 - Connection to nature
- Social isolation
 - Addressing loneliness and social disconnection
- Equity
 - Ensuring equitable access can support equity-denied communities with lower crime rates, economic growth and better educational outcomes

Key takeaways

Strathcona County's open space system:

1. Provides adequate supply for the current population.
2. Must provide adequate functional parkland to support new developments.
3. Should consider functionality and suitability of amenities.

Current open space system

1,287.5 ha of total Municipal Parkland across:

- **207** individual parks
- **78.71 ha** of boulevards/medians
- **1,366.24 ha** of public open space

Strathcona County














Park Classification	Count of Classification	Total Area (ha)	Percentage of Total Area	Average Area (ha)	Min Area (ha)	Max Area (ha)
Boulevards/Medians	1372	78.71	6%	0.06	0.00	3.35
Community	29	175.02	13%	6.04	24.46	0.69
Natural	68	367.68	27%	5.41	68.49	0.20
Neighbourhood	102	333.68	24%	3.27	59.82	0.07
Regional	8	411.14	30%	51.39	205.61	9.05
Grand Total	1579	1366.24	100%	0.87	0.00	205.61
Total (Parks Only)	207	1287.53	94%	6.22	205.61	0.07

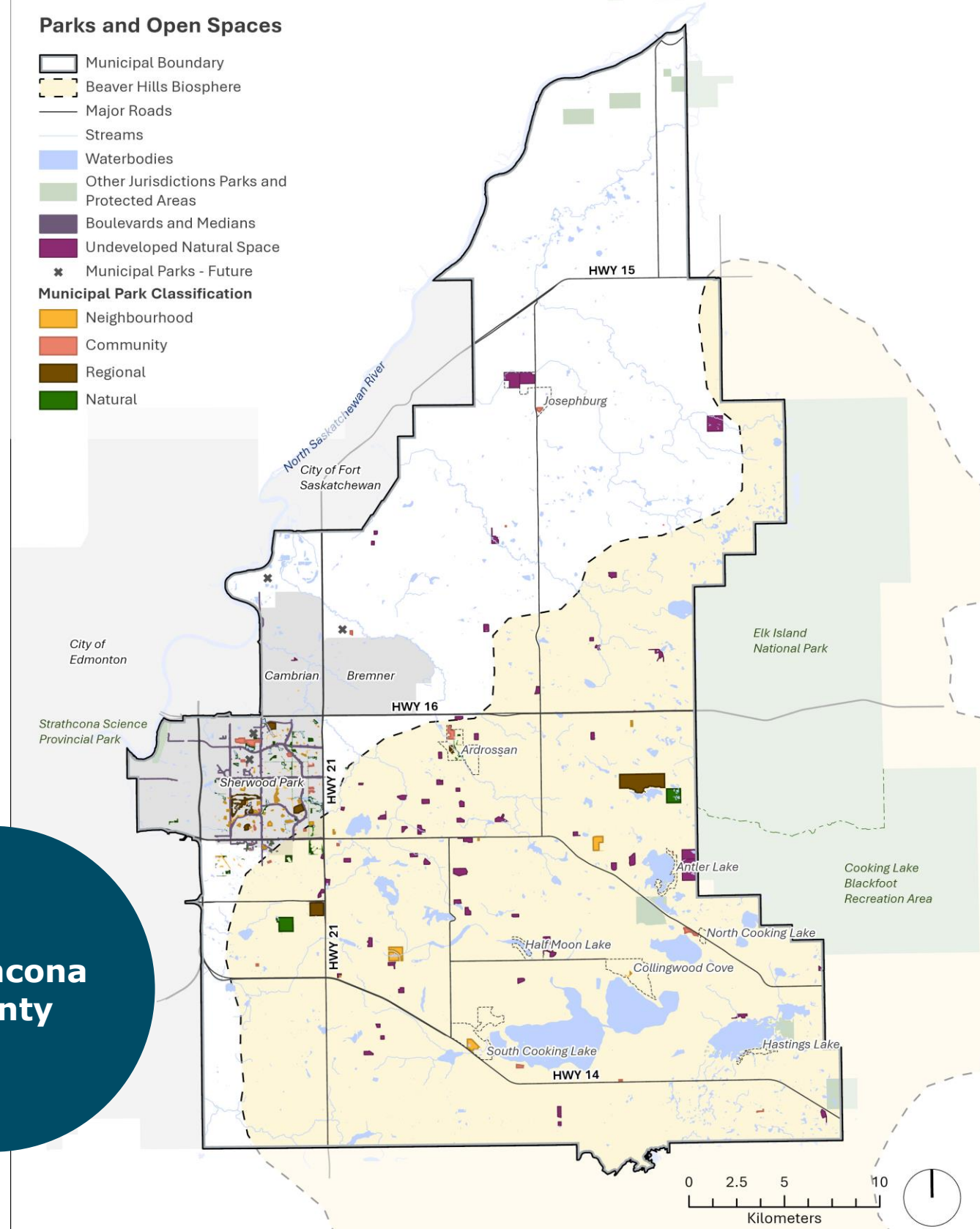
Sherwood Park

Park Classification	Count of Classification	Total Area (ha)	Percentage of Total Area	Average Area (ha)	Min Area (ha)	Max Area (ha)
Boulevards/Medians	1372	78.71	6%	0.06	0.00	3.35
Community	12	79.68	6%	6.64	22.36	1.16
Natural	50	179.25	13%	3.58	16.48	0.20
Neighbourhood	84	169.60	12%	2.02	9.66	0.07
Regional	5	137.72	10%	27.54	65.39	10.01
Grand Total	1523	644.95	47%	0.42	0.00	65.39
Total (Parks Only)	151	566.25	41%	3.75	65.39	0.07

Current open space system

Parks and Open Spaces

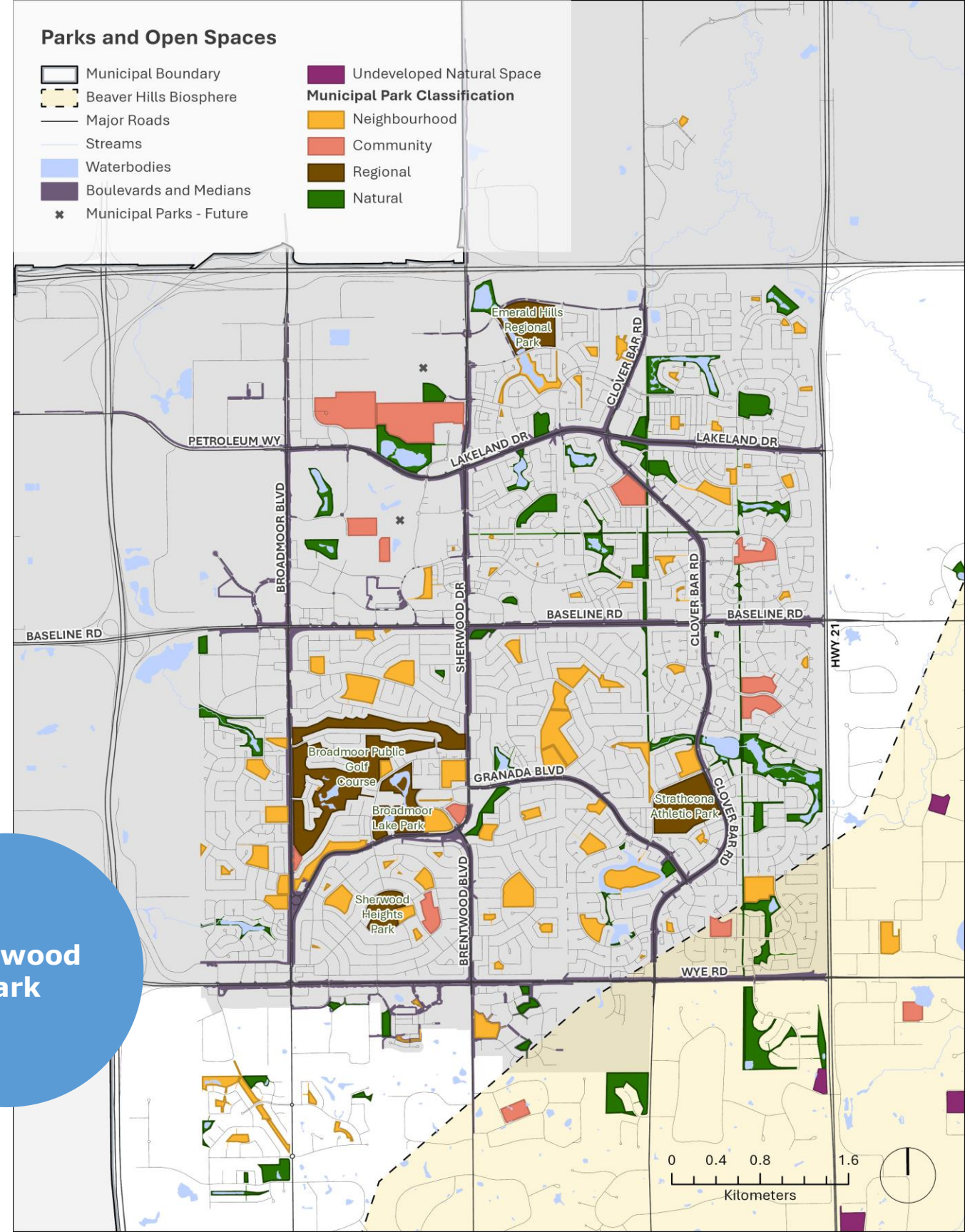
-  Municipal Boundary
 -  Beaver Hills Biosphere
 -  Major Roads
 -  Streams
 -  Waterbodies
 -  Other Jurisdictions Parks and Protected Areas
 -  Boulevards and Medians
 -  Undeveloped Natural Space
 -  Municipal Parks - Future
- ### Municipal Park Classification
-  Neighbourhood
 -  Community
 -  Regional
 -  Natural



Strathcona County

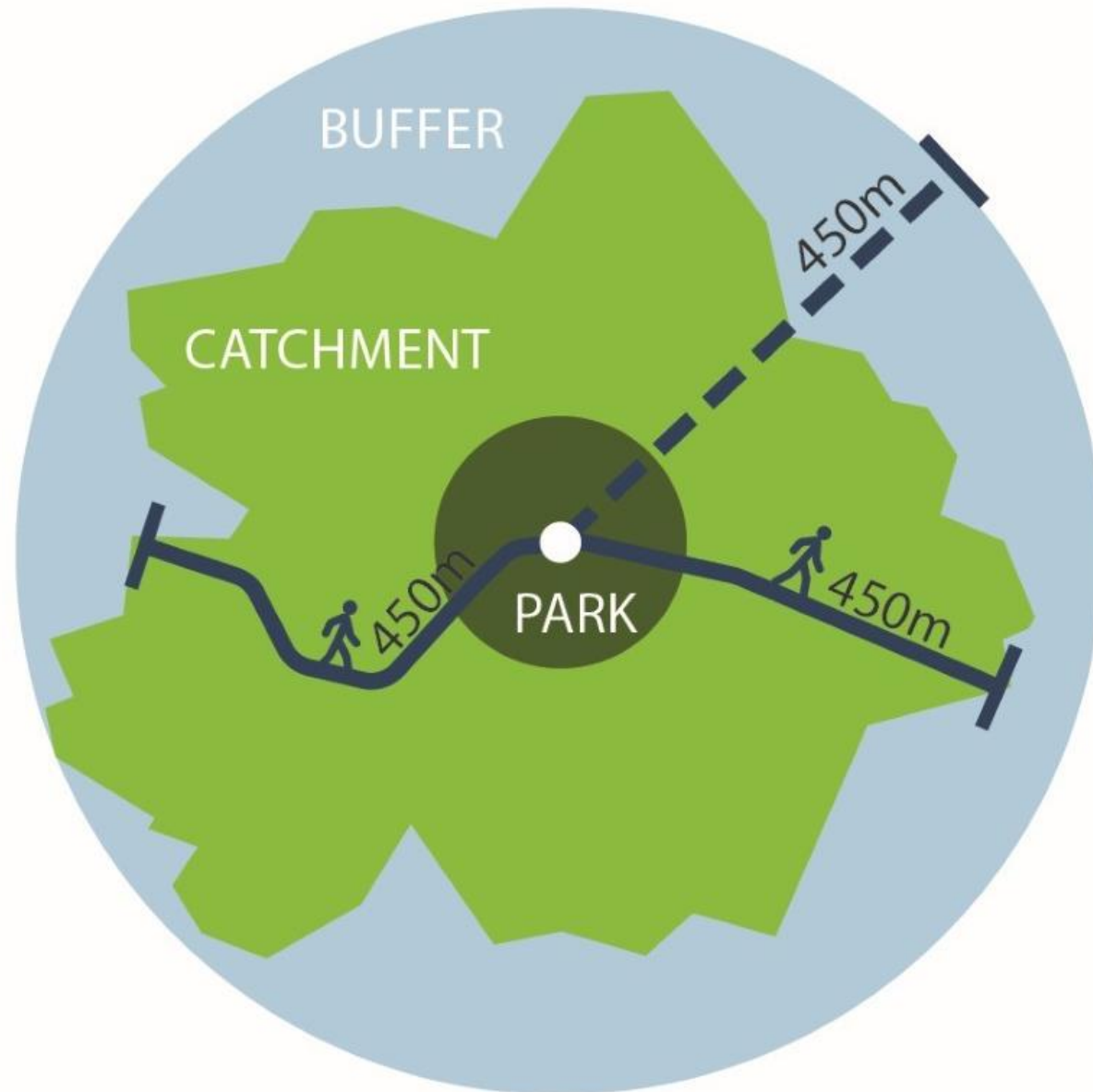


Current open space system



Park provisioning

Catchment-based assessments
of local open space provisioning



Walkable catchment analysis uses the network of roads, sidewalks, and trails to calculate walking routes to determine the lands within a 5 minute / 450m walking distance from each public open space.

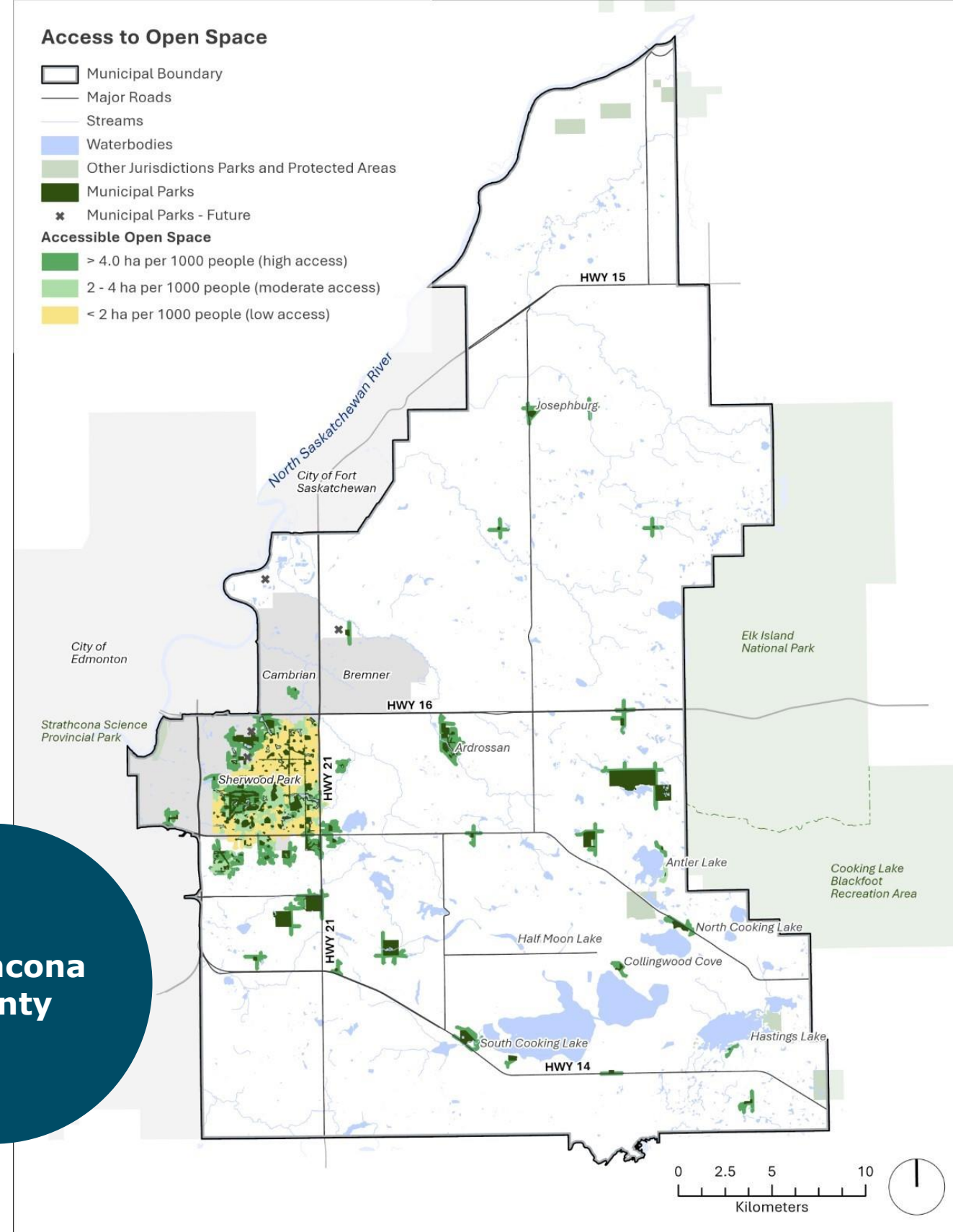
More useful analysis than a typical “buffer” or “birds’ eye” catchment.

- Considers on the ground pathways and existing terrain barriers
- More accurate assessment of the accessibility of the current parkland supply.

Open space provisioning

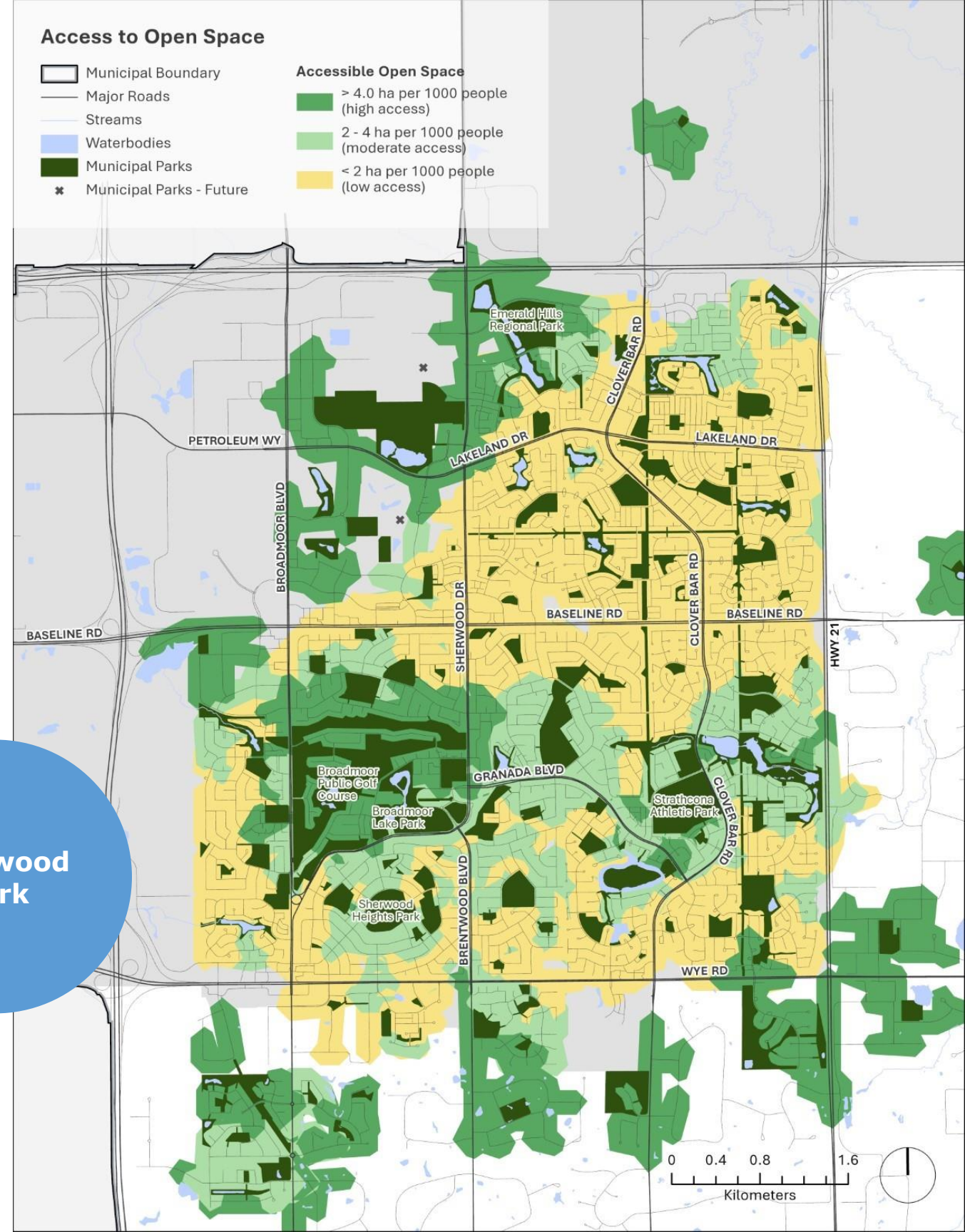
Access to Open Space

-  Municipal Boundary
 -  Major Roads
 -  Streams
 -  Waterbodies
 -  Other Jurisdictions Parks and Protected Areas
 -  Municipal Parks
 -  Municipal Parks - Future
- Accessible Open Space**
-  > 4.0 ha per 1000 people (high access)
 -  2 - 4 ha per 1000 people (moderate access)
 -  < 2 ha per 1000 people (low access)

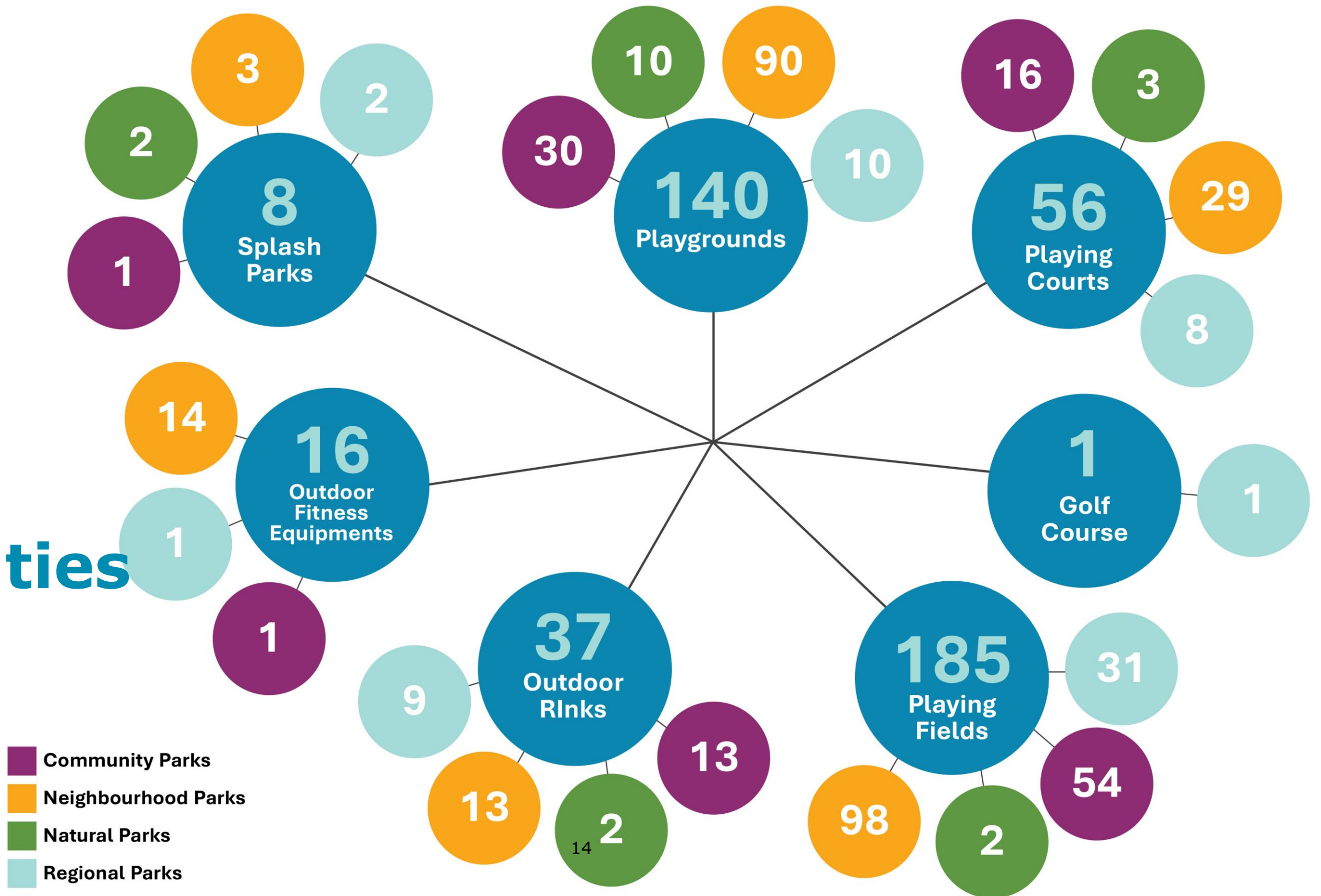


Strathcona County

Open space provisioning

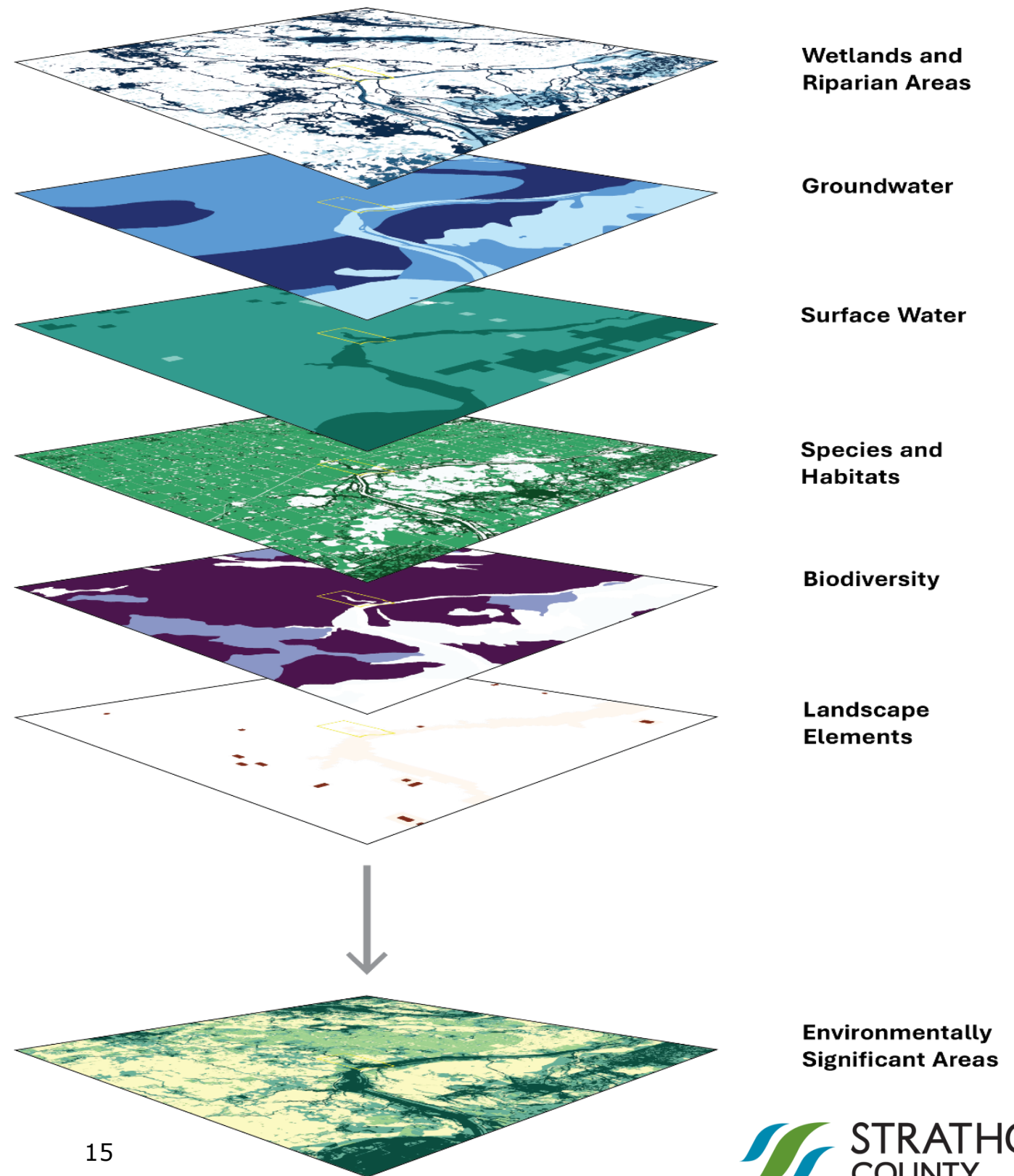


Open space amenities



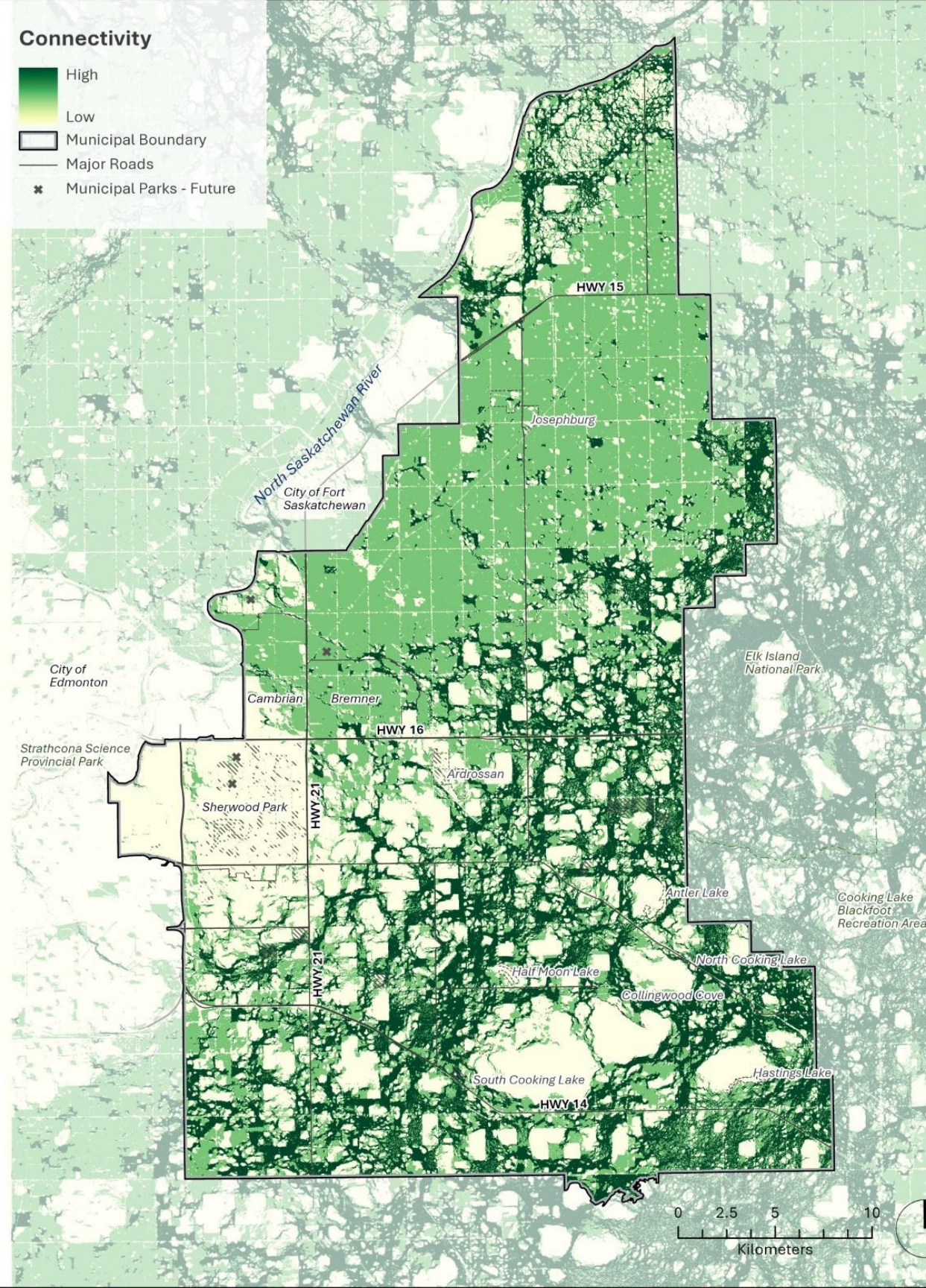
Ecological value of the open space system

The relative value of lands throughout the county were defined using an overlay model which took individual data inputs for six themes



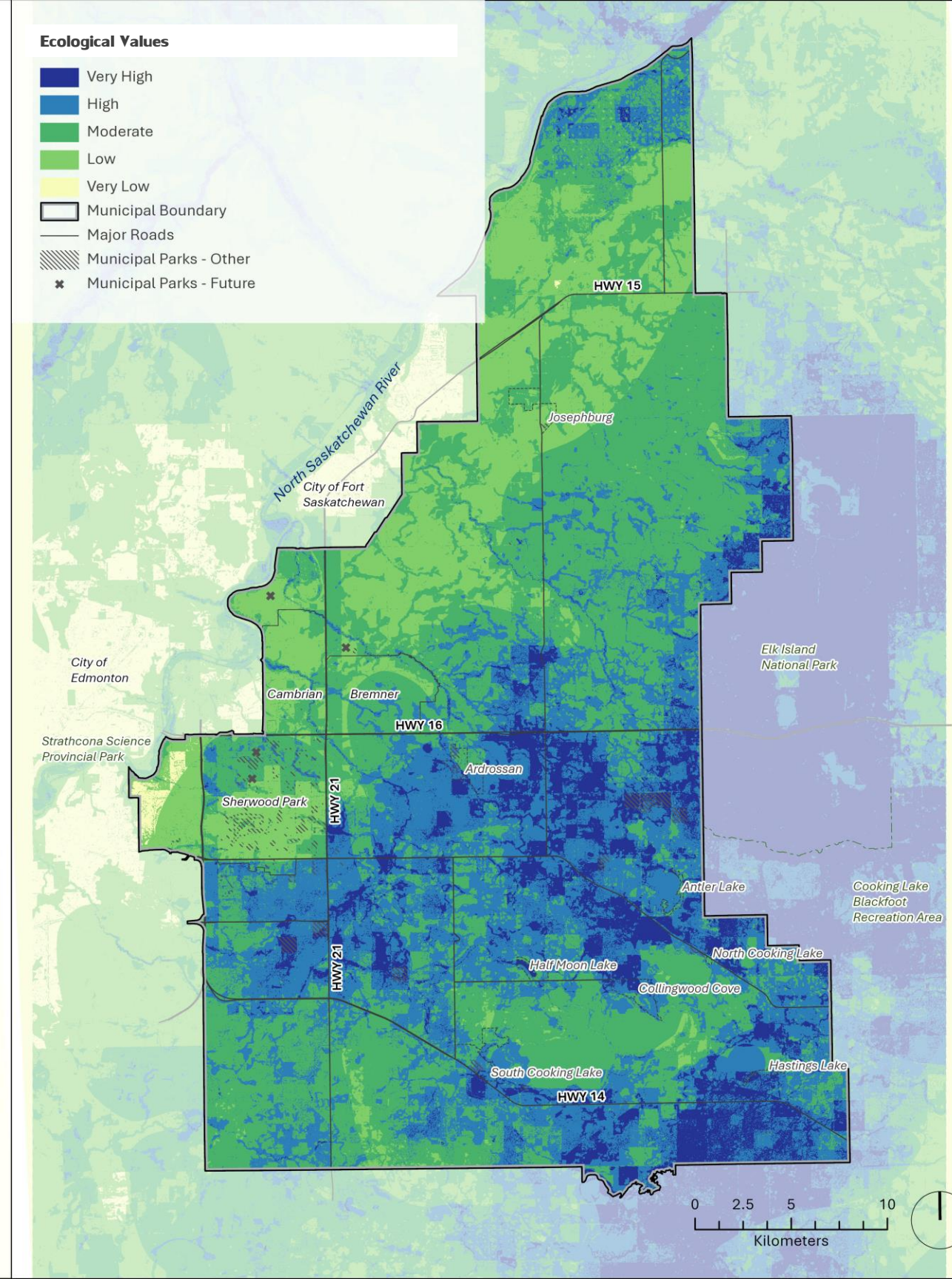
Connectivity

- High
- Low
- Municipal Boundary
- Major Roads
- Municipal Parks - Future



Ecological Values

- Very High
- High
- Moderate
- Low
- Very Low
- Municipal Boundary
- Major Roads
- Municipal Parks - Other
- Municipal Parks - Future



What we heard: Summer 2024 visioning survey

Throughout Phase 1a, a short visioning survey collected public input on values, interests, and needs for open spaces.

The survey was open from July 2 to August 18. We collected a total of 827 responses.

Share your vision for open spaces! Which three words would you use to describe your vision for the future of open spaces in the County?

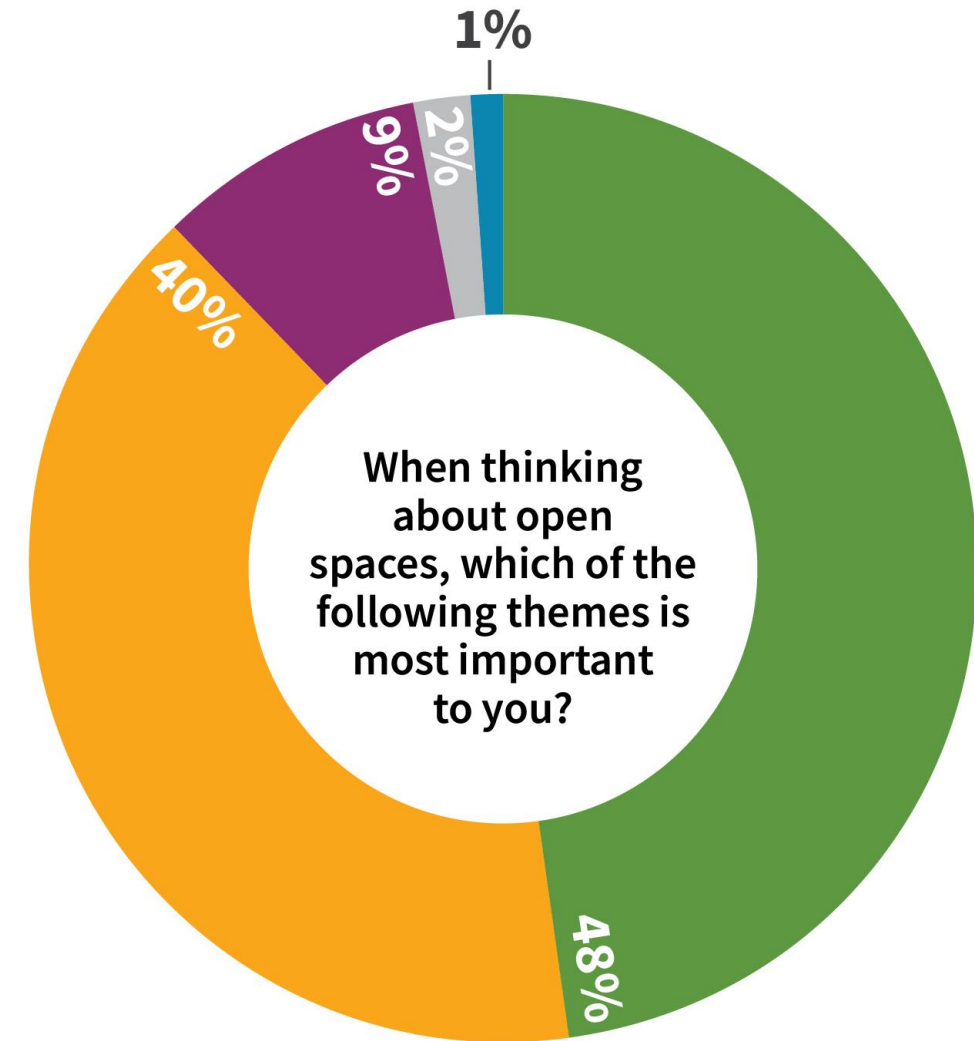


What we heard: summer 2024 visioning survey

Preferred themes:

1. Nature (48%)
2. Leisure/Rec (40%)
3. Community (9%)

When thinking about open spaces, which of the following themes is most important to you?



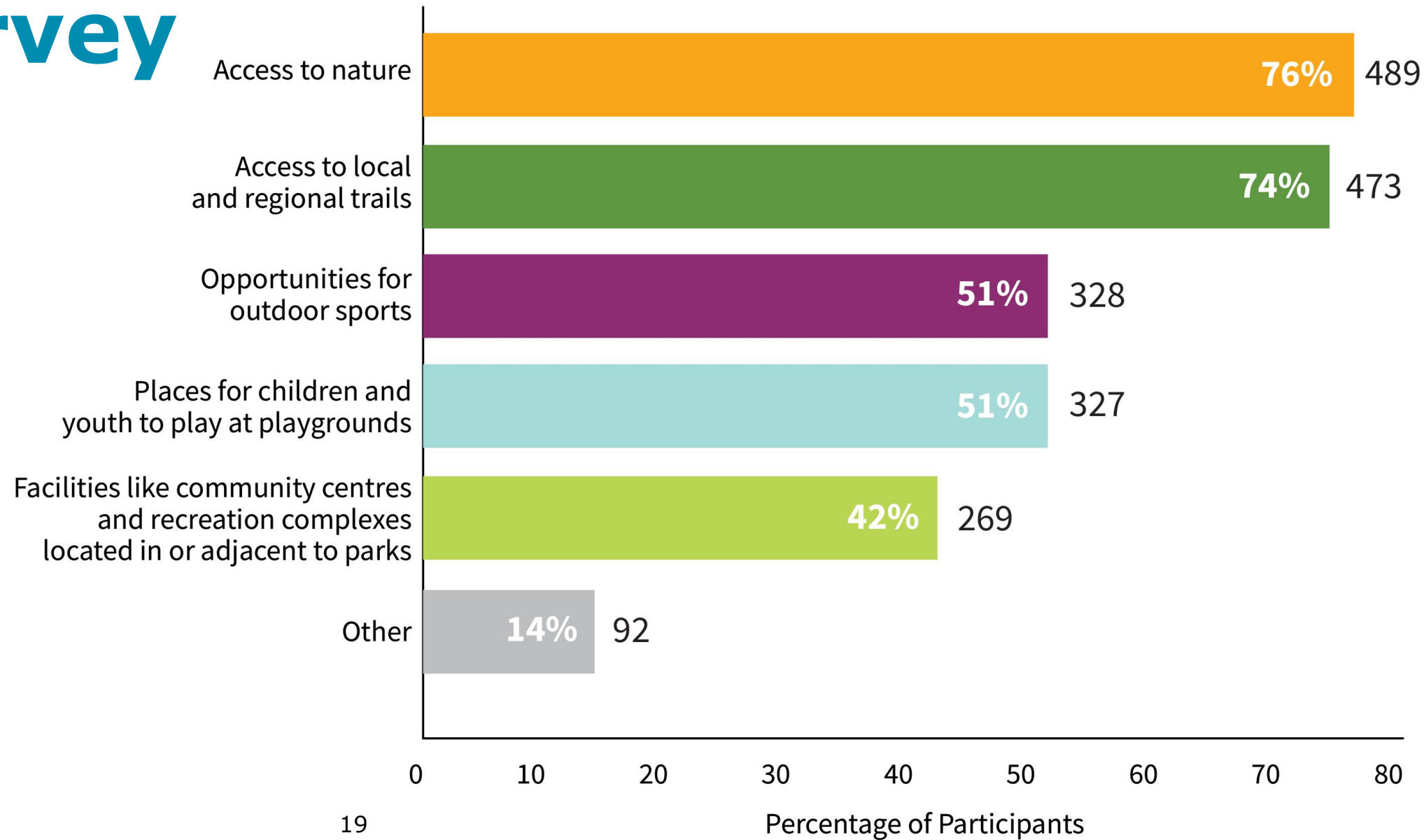
Percentage of Participants (645 Respondents)



What we heard: Summer 2024 visioning survey

Respondents most appreciate access to nature and local/regional trails in Strathcona County.

What do you appreciate about open spaces in the County?

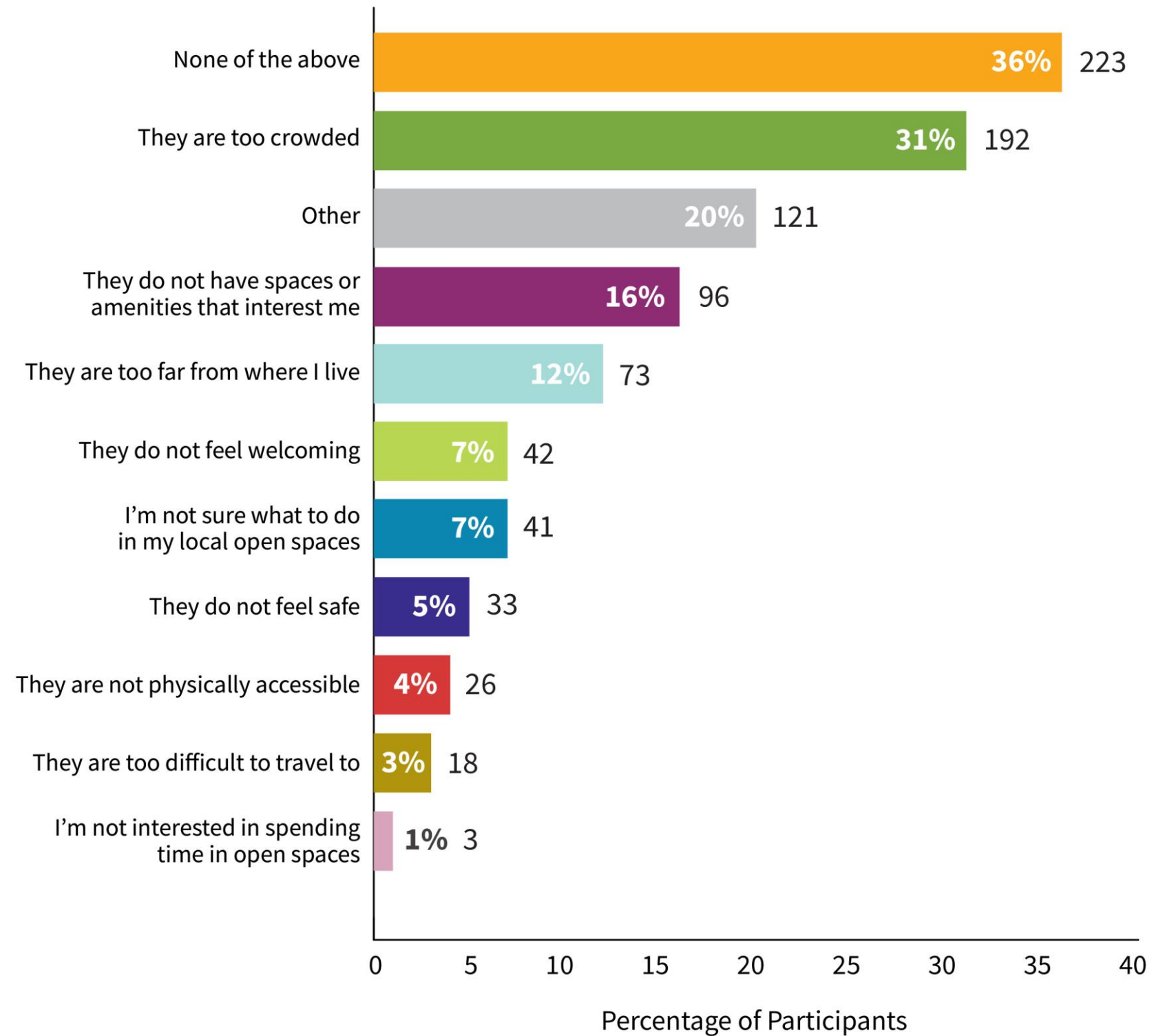


What we heard: Summer 2024 visioning survey

Most common barriers:

1. Too crowded (31%)
2. Spaces / amenities are not interesting (16%)
3. Too far from home (12%)

Which of the following barriers do you experience (if any) when accessing open spaces?



Next Steps

Phase 1 Engagement (Fall 2024)

Completed:

Technical Committee Meeting
Interested Parties Workshop
Public Open Houses
Interactive Map

Forthcoming:

What we heard summary (presented to Council Q1 2025)

Revisions and additions based on internal and external feedback

Phase 2 Visioning (Winter 2024)

Confirm and refine vision for the County's open space system

Identify key objectives of the Open Space Master Plan

Establish Master Plan outline

Provide clear direction for subsequent development of the Master Plan in Q1 of 2025

Questions