

BYLAW 20-2016

A BYLAW OF STRATHCONA COUNTY IN THE PROVINCE OF ALBERTA, FOR THE PURPOSE OF AMENDING BYLAW 1-2007, AS AMENDED, BEING THE MUNICIPAL DEVELOPMENT PLAN.

WHEREAS it is deemed advisable to amend the Municipal Development Plan;

NOW THEREFORE, the Council of Strathcona County, duly assembled, pursuant to the authority conferred upon it by the *Municipal Government Act, R.S.A. 2000 c.-M-26* and amendments thereto, enacts as follows:

That Bylaw 1-2007, as amended, be further amended as follows:

1. The map titled Map #1 Fragmented County Residential Subdivisions Outside Policy Boundary is deleted and replaced with the map titled Map #1 Fragmented County Residential Subdivisions Outside Policy Boundary attached as Schedule A and forming part of this bylaw.
2. The map titled Map #1.1 Development Expansion Area is deleted and replaced with the map titled #1.1 Development Expansion Area attached as Schedule B and forming part of this bylaw.
3. The map titled Map #2 Recommended Pipeline Corridor is deleted and replaced with the map titled Map #2 Recommended Pipeline Corridor attached as Schedule C and forming part of this bylaw.
4. The map titled Map #3 Priority Environment Management Area's (PEMA) is deleted and replaced with the map titled Map #3 Priority Environment Management Area's (PEMA) attached as Schedule D and forming part of this bylaw.
5. The map titled Map #4 Fire Risk Model is deleted and replaced with the map titled Map #4 Fire Risk Model attached as Schedule E and forming part of this bylaw.
6. The map titled Map #5 Community Facilities – Rural is deleted and replaced with the map titled Map #5 Community Facilities – Rural attached as Schedule F and forming part of this bylaw.
7. The map titled Map #7 Existing Confined Feeding Operations is deleted and replaced with the map titled Map #7 Existing Confined Feeding Operations attached as Schedule G and forming part of this bylaw.
8. The map titled Map #9 Transportation Map – Rural is deleted and replaced with the map titled Map #9 Transportation Map – Rural attached as Schedule H and forming part of this bylaw.
9. The map titled Map #10 Transportation Map – Urban is deleted and replaced with the map titled Map #10 Transportation Map – Urban attached as Schedule I and forming part of this bylaw.
10. The map titled Map #11 Joint Planning Study Area is deleted and replaced with the map titled Map #11 Joint Planning Study Area attached as Schedule J and forming part of this bylaw.

11. The map titled Map #12 Policy Areas is deleted and replaced with the map titled Map #12 Policy Areas attached as Schedule K and forming part of this bylaw.
12. The map titled Map #13 Policy Areas is deleted and replaced with the map titled Map #13 Policy Areas attached as Schedule L and forming part of this bylaw.
13. This Bylaw comes into effect after third reading and upon being signed.

Read a first time this _____ day of _____, 2016.

CAPITAL REGION BOARD APPROVAL this _____ day of _____, 2016.

Read a second time this _____ day of _____, 2016.

Read a third time and finally passed this _____ day of _____, 2016.







Mayor

Director,
Legislative and Legal Services

Date Signed: _____

**2007 Strathcona County
Municipal Development Plan
Bylaw 1-2007
Fragmented Country Residential
Subdivisions Outside Policy
Boundary
Map #1**

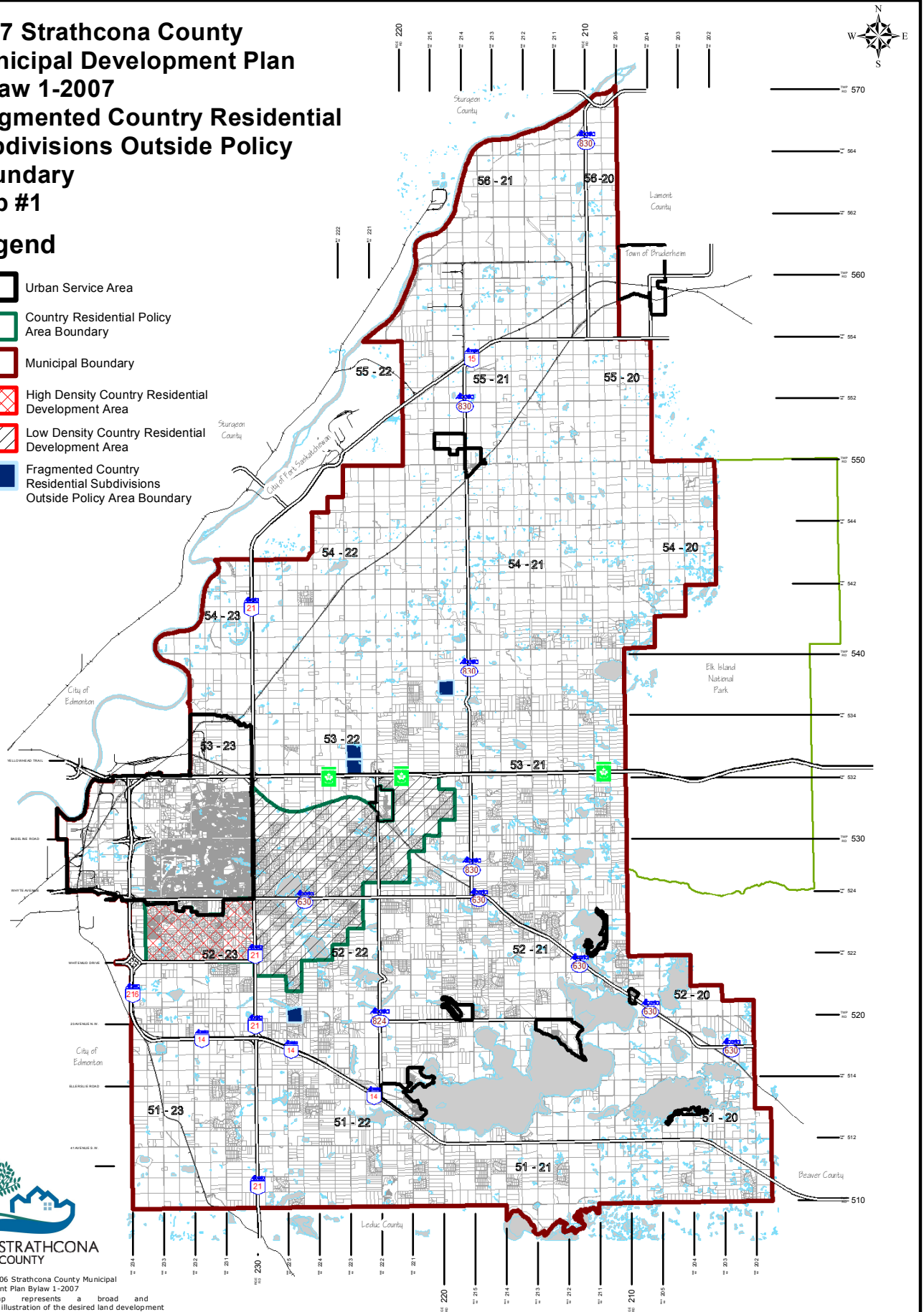
Legend

-  Urban Service Area
-  Country Residential Policy Area Boundary
-  Municipal Boundary
-  High Density Country Residential Development Area
-  Low Density Country Residential Development Area
-  Fragmented Country Residential Subdivisions Outside Policy Area Boundary






Source: 2006 Strathcona County Municipal Development Plan Bylaw 1-2007
This map represents a broad and conceptual illustration of the desired land development structure and is not intended to provide site specific direction to land use regulation.

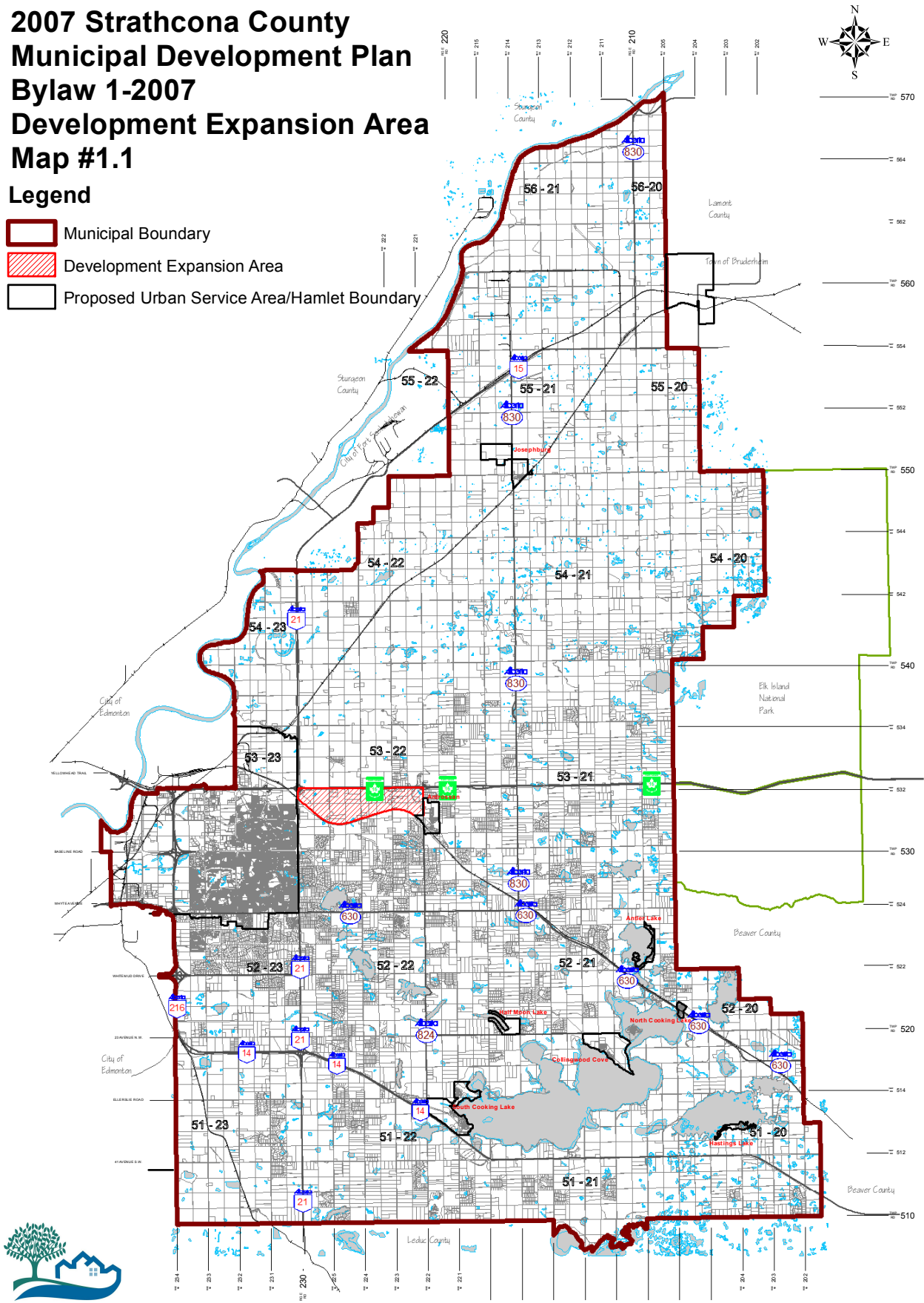
Last Amended By: Bylaw 17-2015, Nov 3, 2015
Date Adopted By: Bylaw 1-2007, May 29, 2007



2007 Strathcona County Municipal Development Plan Bylaw 1-2007 Development Expansion Area Map #1.1

Legend

-  Municipal Boundary
-  Development Expansion Area
-  Proposed Urban Service Area/Hamlet Boundary



Source: 2007 Strathcona County Municipal Development Plan Bylaw 1-2007
Transit and Area Master Plan, July 1999

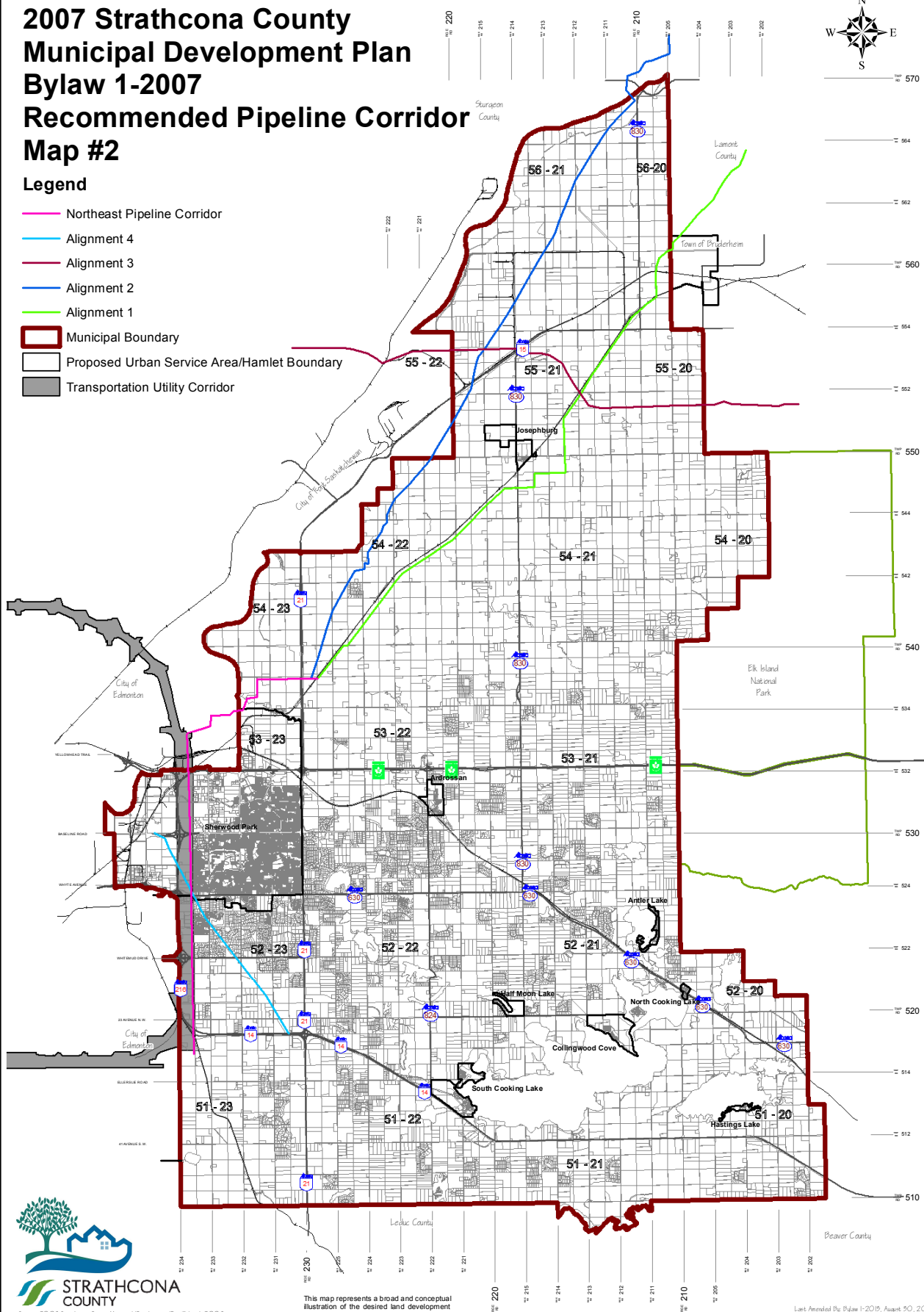
This map represents a broad and conceptual illustration of the desired land development structure and is not intended to provide site specific direction to land use regulation.

Link Approved By Bylaw 1-2007, August 30, 2008
Date Adopted By Bylaw 1-2007, May 29, 2007
The Name Map 1.1 and the Logo (Strathcona County) are the property of Strathcona County.

2007 Strathcona County Municipal Development Plan Bylaw 1-2007 Recommended Pipeline Corridor Map #2

Legend

- Northeast Pipeline Corridor
- Alignment 4
- Alignment 3
- Alignment 2
- Alignment 1
- Municipal Boundary
- Proposed Urban Service Area/Hamlet Boundary
- Transportation Utility Corridor






Source: 2007 Strathcona County Municipal Development Plan Bylaw 1-2007
Regional Pipeline Corridor and Setback Study, Nov 2004

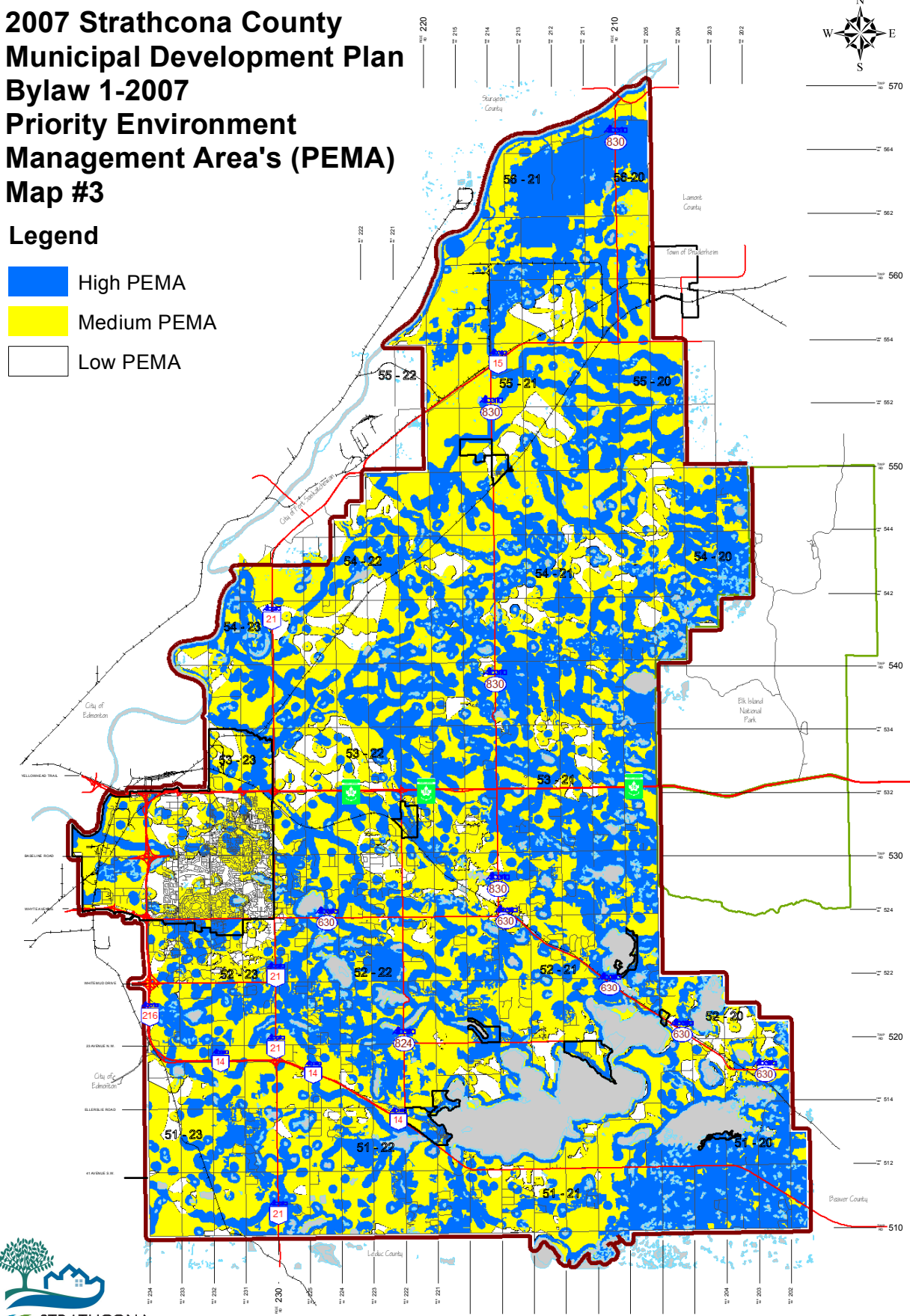
This map represents a broad and conceptual illustration of the desired land development structure and is not intended to provide site specific direction to land use regulation.

Last Amended By Bylaw 1-2015, August 50, 2015
Adopted By Bylaw 1-2007, May 29, 2007
Bylaw 1-2007, May 29, 2007
Source: Strathcona County Council, Strathcona County, Alberta

**2007 Strathcona County
Municipal Development Plan
Bylaw 1-2007
Priority Environment
Management Area's (PEMA)
Map #3**





Legend

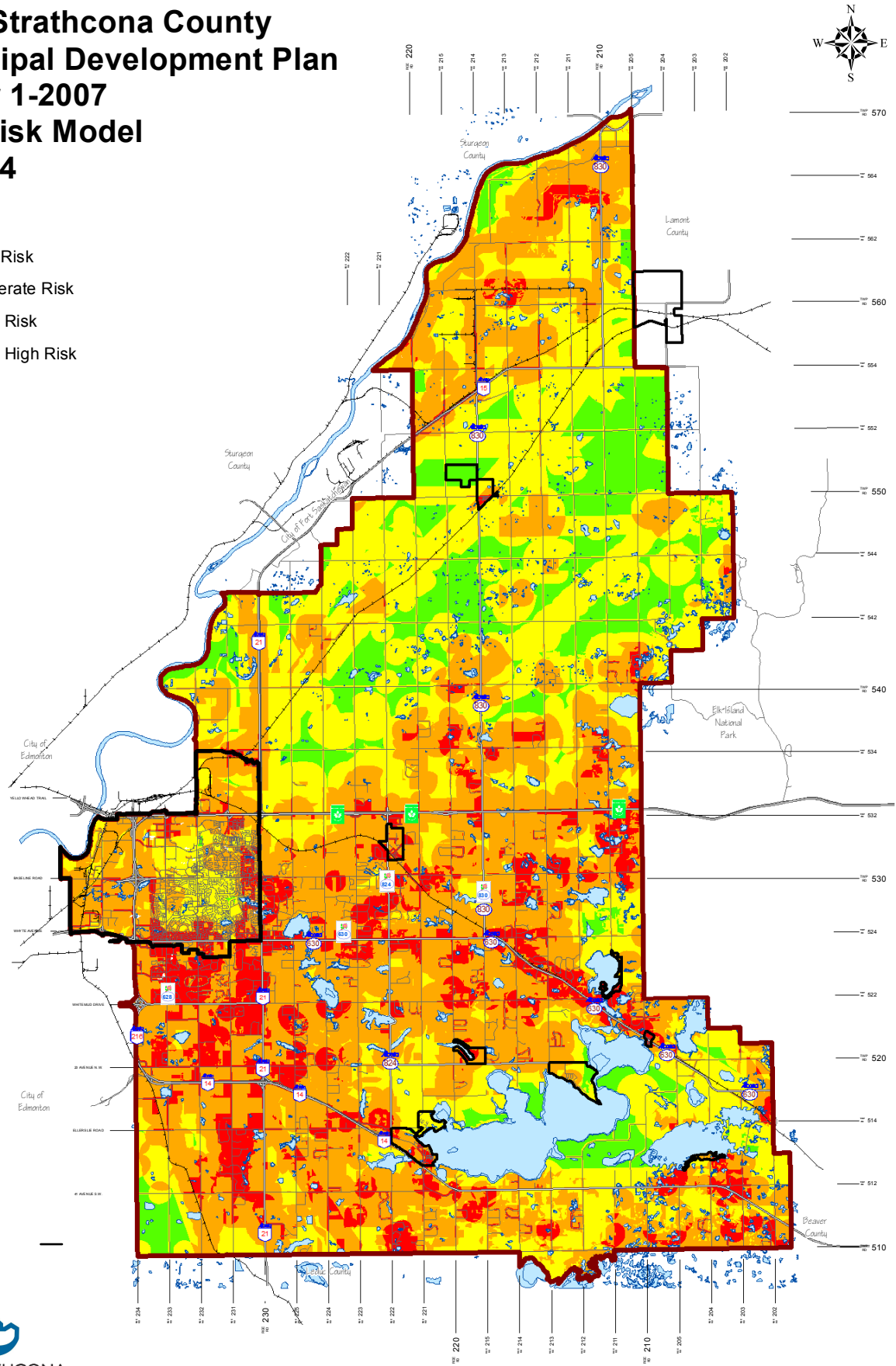
-  High PEMA
 Medium PEMA
 Low PEMA



**2007 Strathcona County
Municipal Development Plan
Bylaw 1-2007
Fire Risk Model
Map #4**

Legend

-  Low Risk
 Moderate Risk
 High Risk
 Very High Risk



Source: 2007 Strathcona County Municipal Development Plan Bylaw 1-2007

This map represents a broad and conceptual illustration of the desired land development structure and is not intended to provide site specific direction to land use regulation.

Last Amended By: Bylaw 1-2013, August 30, 2013
Adopted By: Bylaw 1-2007, May 29, 2007

2007 Strathcona County Municipal Development Plan Bylaw 1-2007 Community Facilities - Rural Map #5

Legend

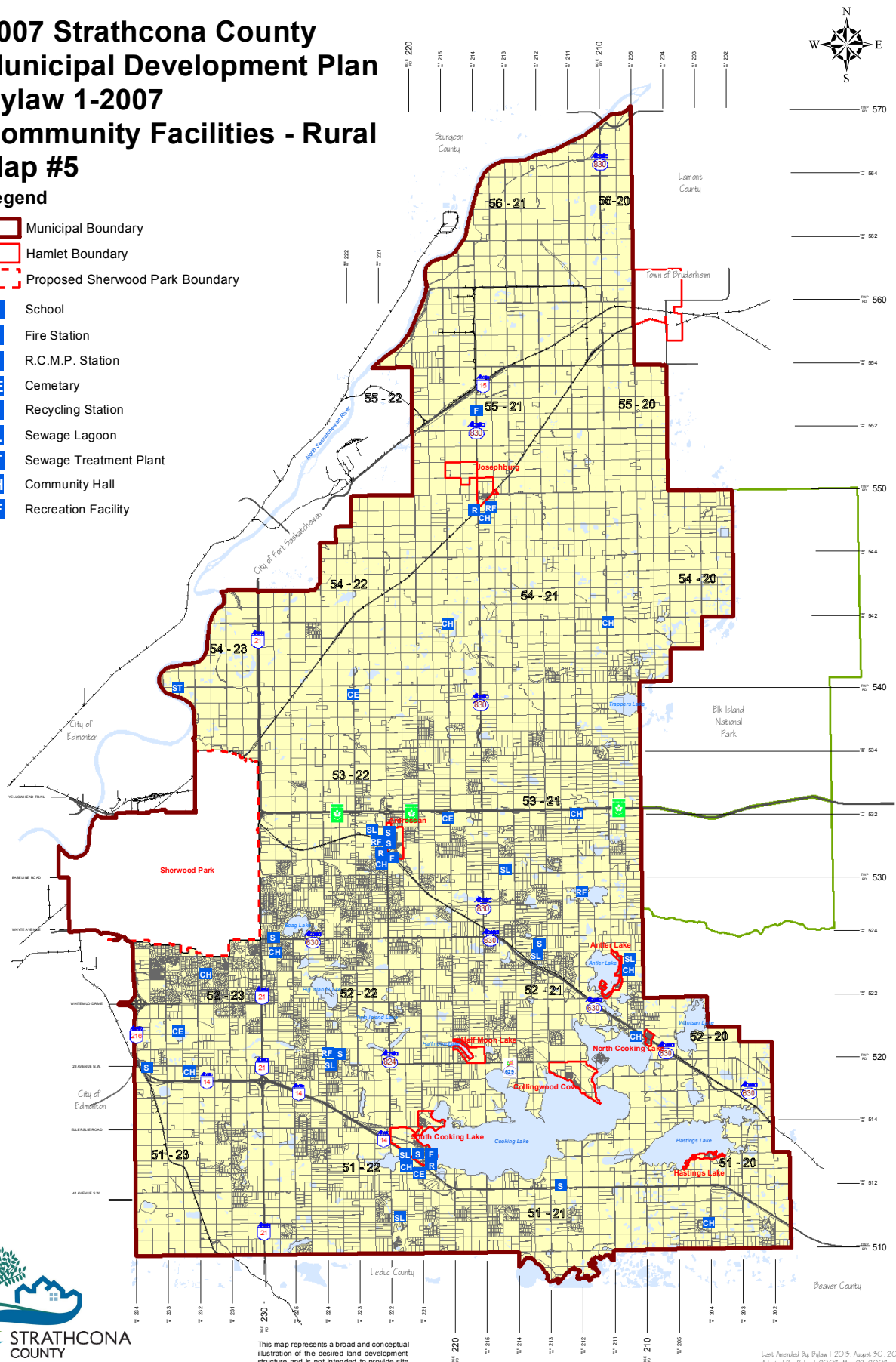
- Municipal Boundary
- Hamlet Boundary
- Proposed Sherwood Park Boundary
- S School
- F Fire Station
- P R.C.M.P. Station
- CE Cemetery
- R Recycling Station
- SL Sewage Lagoon
- ST Sewage Treatment Plant
- CH Community Hall
- RF Recreation Facility



Source: 2007 Strathcona County Municipal Development Plan Bylaw 1-2007

This map represents a broad and conceptual illustration of the desired land development structure and is not intended to provide site specific direction to land use regulation.

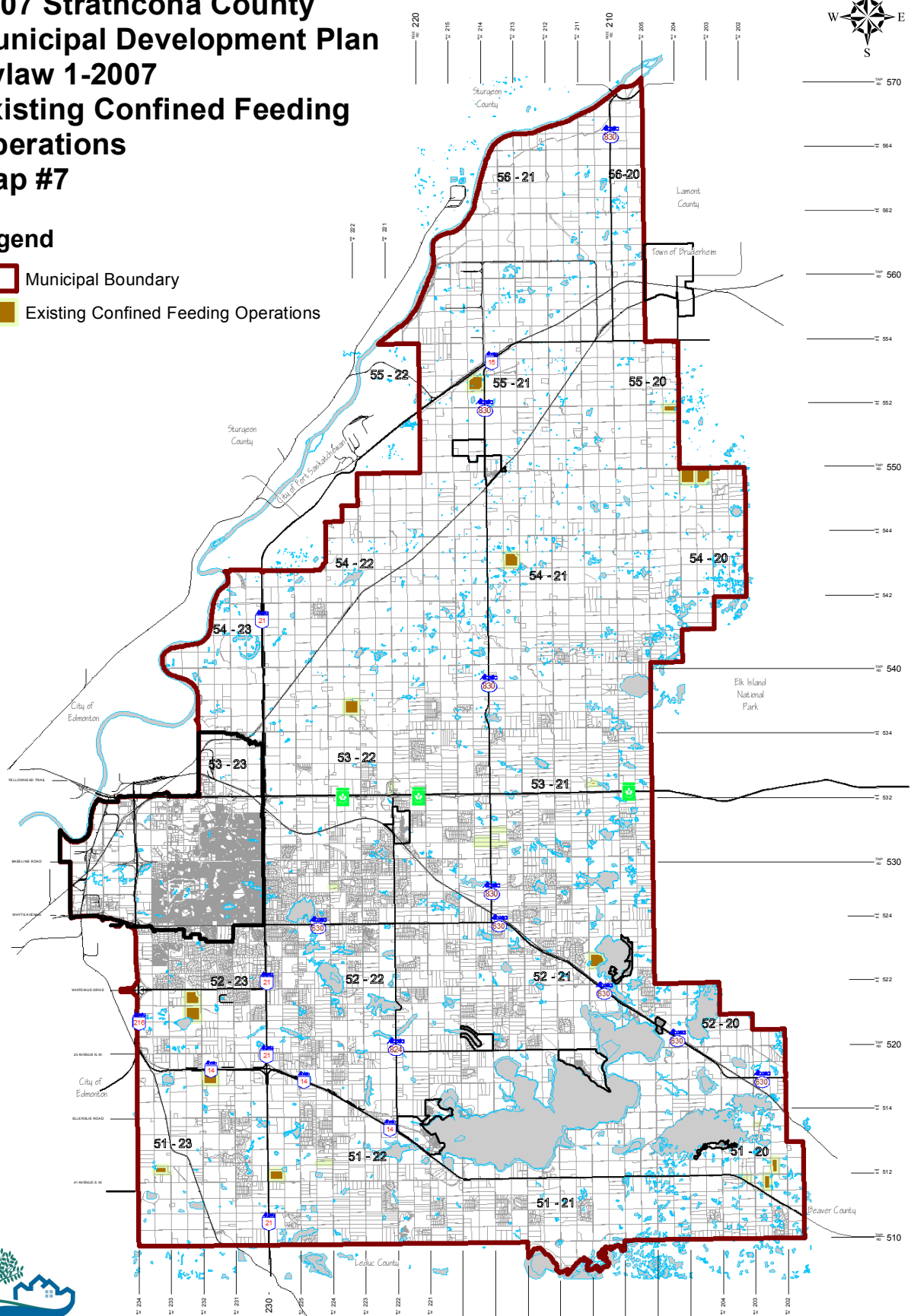
Last Amended By Bylaw 1-2019, August 30, 2019
Adopted By Bylaw 1-2007, May 29, 2007
The Town, City and County of Strathcona County are the authors of this document.



2007 Strathcona County Municipal Development Plan Bylaw 1-2007 Existing Confined Feeding Operations Map #7

Legend

- Municipal Boundary
- Existing Confined Feeding Operations



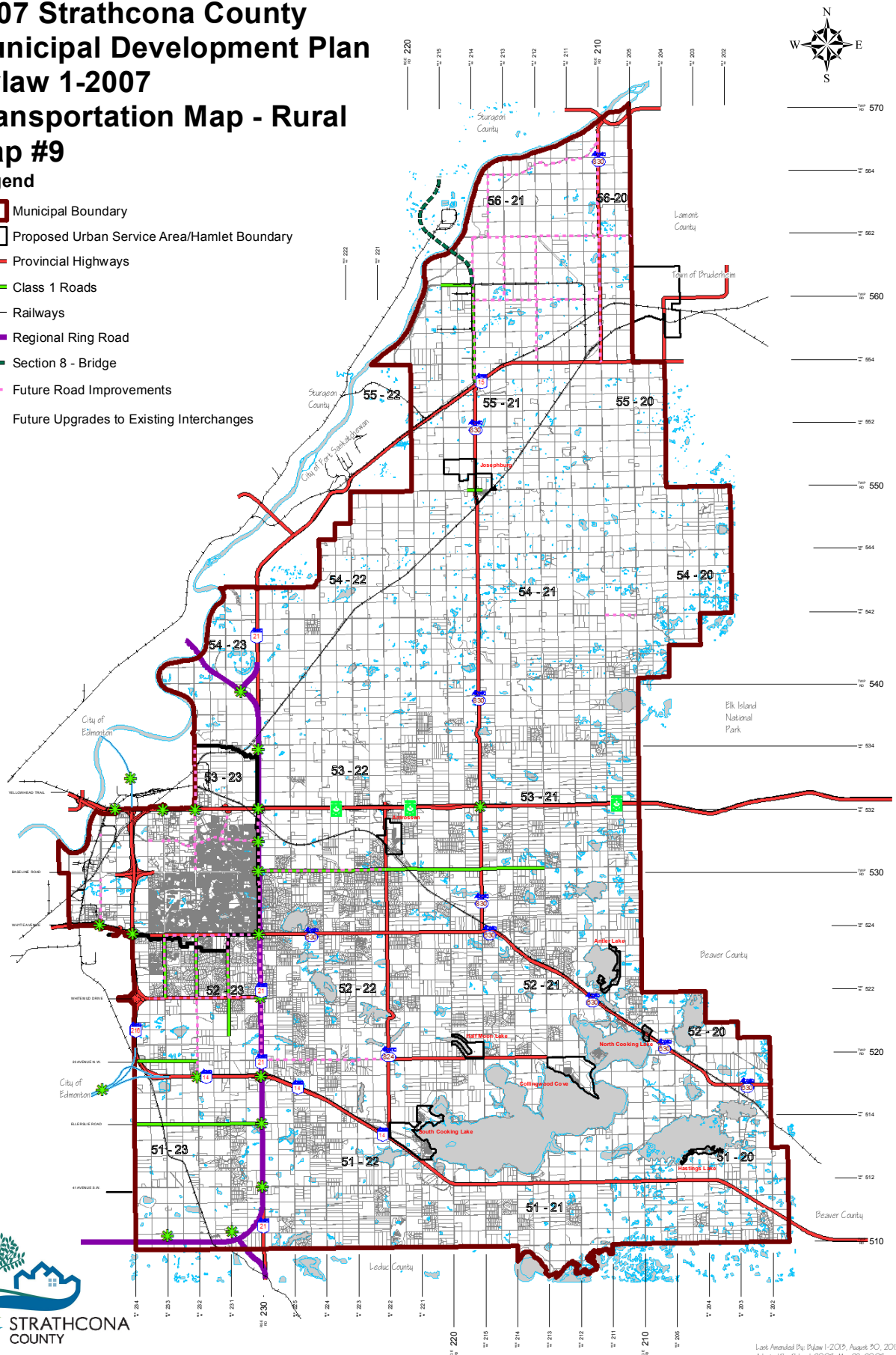
2007 Strathcona County Municipal Development Plan Bylaw 1-2007 Transportation Map - Rural Map #9

Legend

- Municipal Boundary
- Proposed Urban Service Area/Hamlet Boundary
- Provincial Highways
- Class 1 Roads
- Railways
- Regional Ring Road
- Section 8 - Bridge
- Future Road Improvements
- ✱ Future Upgrades to Existing Interchanges




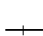





Source: 2007 Strathcona County Municipal Development Plan/Bylaw 1-2007

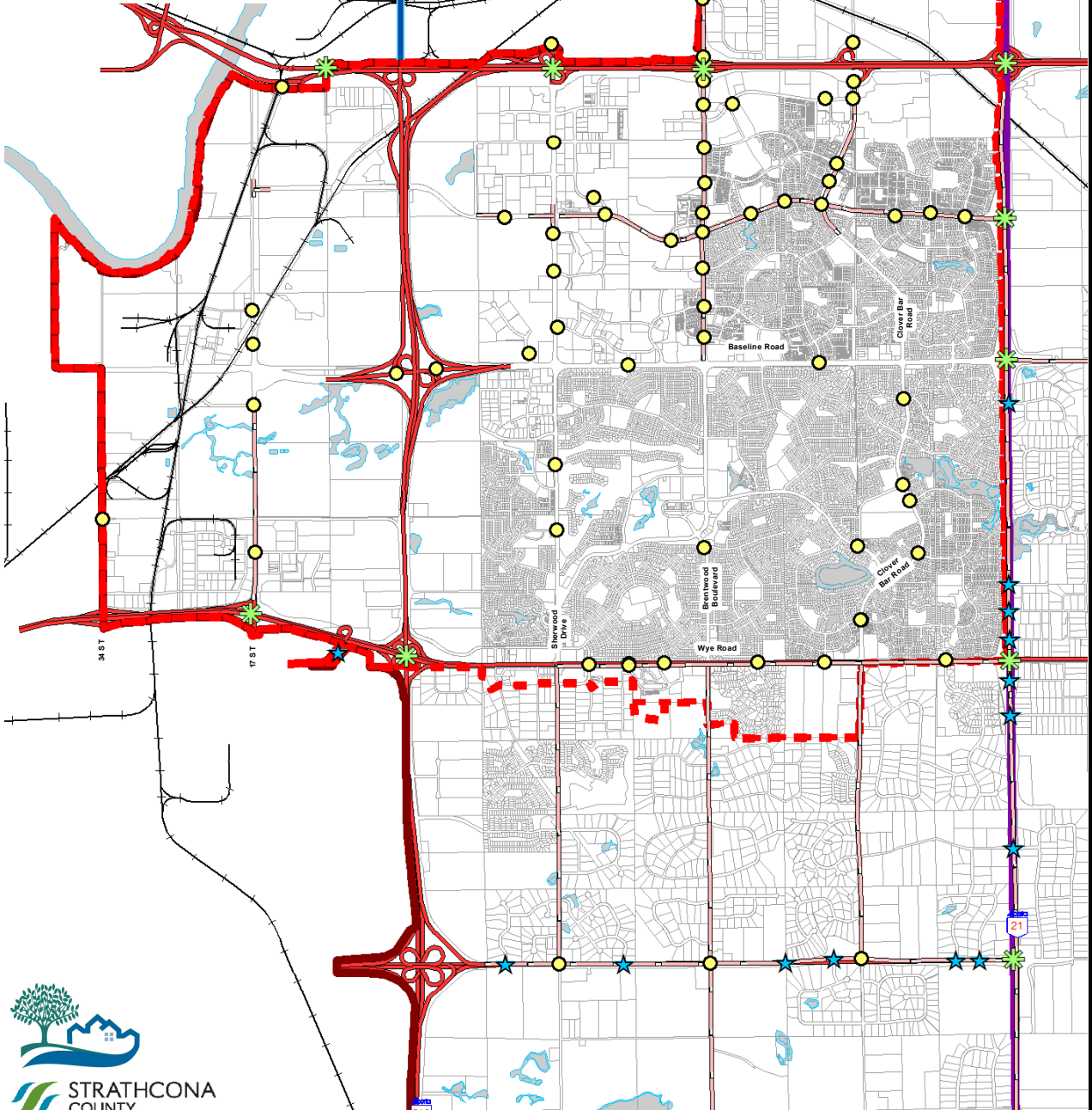


Last Amended By: Bylaw 1-2015, August 30, 2015
Adopted By: Bylaw 1-2007, May 29, 2007
Source: 2007 Strathcona County Municipal Development Plan/Bylaw 1-2007

2007 Strathcona County Municipal Development Plan Bylaw 1-2007 Transportation Map - Urban Map #10

Legend

-  Municipal Boundary
-  Proposed Urban Service Area Boundary
-  Provincial Highways
-  Railways
-  Future Road Improvements
-  Anthony Henday
-  Regional Ring Road
-  Future Upgrades to Existing Interchanges
-  Future Traffic Signals
-  Future Highway Access Closures






Source: 2007 Strathcona County Municipal Development Plan Bylaw 1-2007

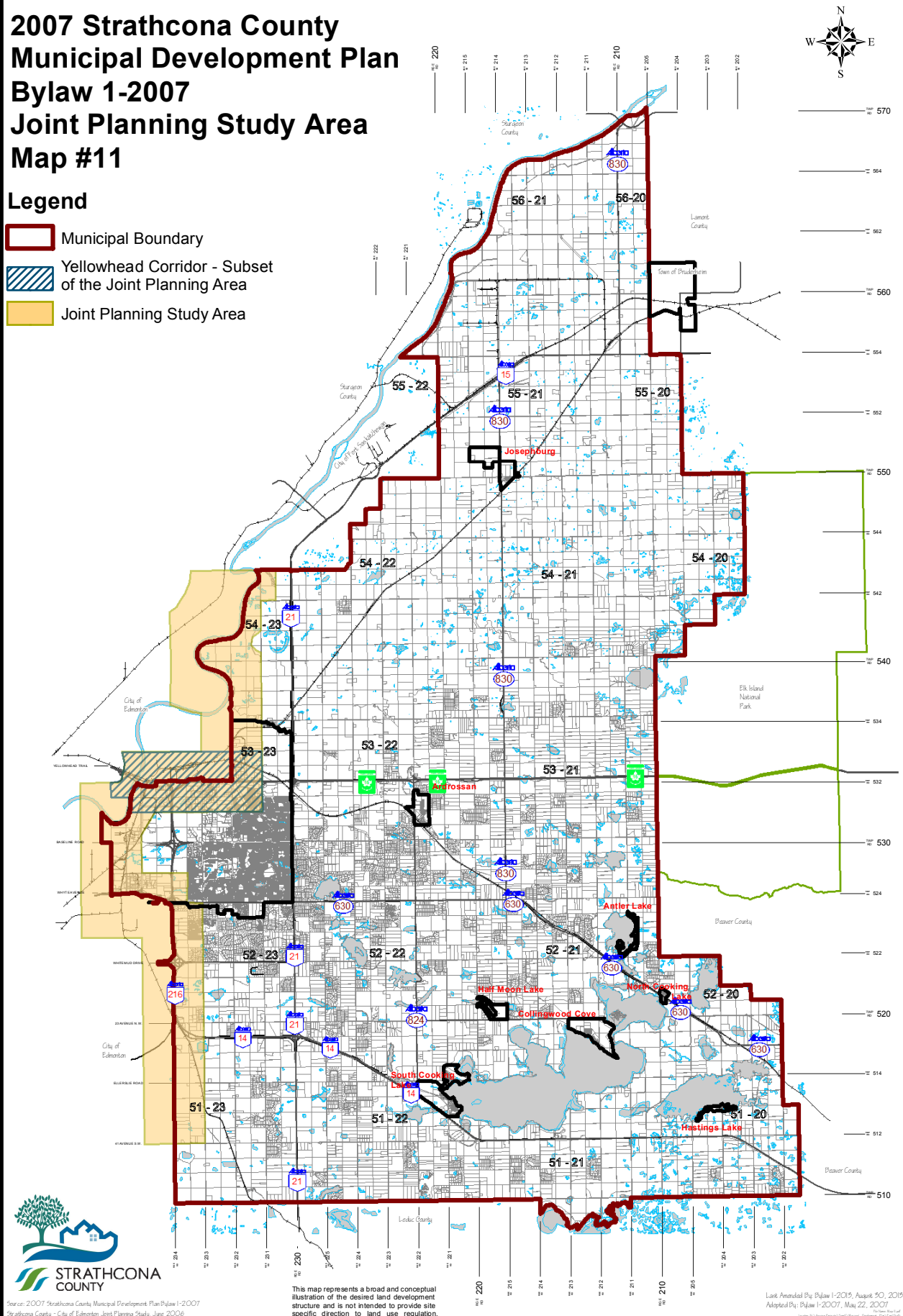
This map represents a broad and conceptual illustration of the desired land development structure and is not intended to provide site specific direction to land use regulation.

Last Amended By Bylaw
Adopted As Bylaw-2007, May 29, 2007

2007 Strathcona County Municipal Development Plan Bylaw 1-2007 Joint Planning Study Area Map #11

Legend

-  Municipal Boundary
-  Yellowhead Corridor - Subset of the Joint Planning Area
-  Joint Planning Study Area



Source: 2007 Strathcona County Municipal Development Plan Bylaw 1-2007
Strathcona County - City of Edmonton Joint Planning Study, June 2006












This map represents a broad and conceptual illustration of the desired land development structure and is not intended to provide site specific direction to land use regulation.

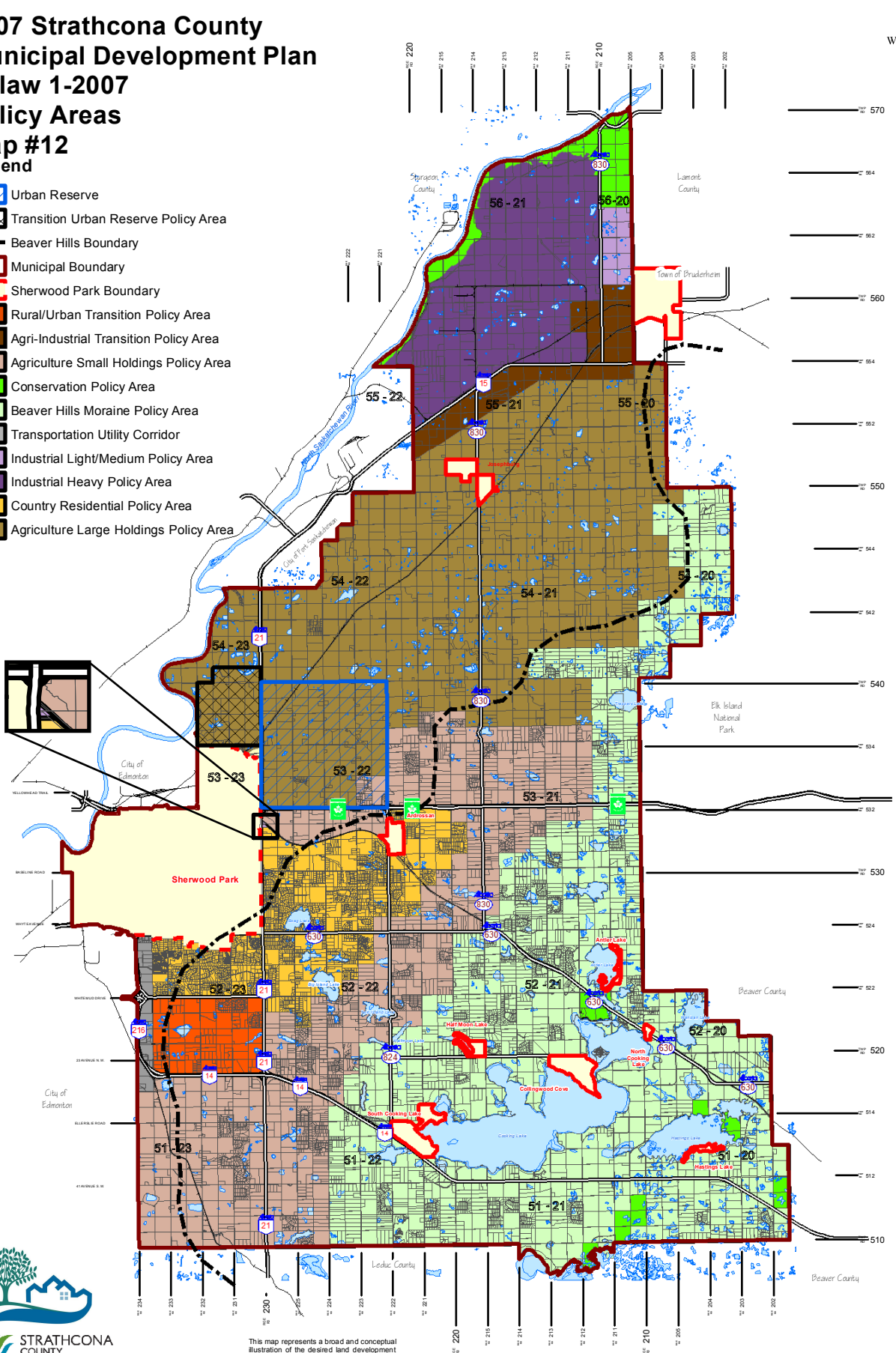
Last Amended By Bylaw 1-2015, August 30, 2015
Adopted By Bylaw 1-2007, May 22, 2007

Schedule K

2007 Strathcona County Municipal Development Plan Bylaw 1-2007 Policy Areas

Map #12 Legend

-  Urban Reserve
-  Transition Urban Reserve Policy Area
-  Beaver Hills Boundary
-  Municipal Boundary
-  Sherwood Park Boundary
-  Rural/Urban Transition Policy Area
-  Agri-Industrial Transition Policy Area
-  Agriculture Small Holdings Policy Area
-  Conservation Policy Area
-  Beaver Hills Moraine Policy Area
-  Transportation Utility Corridor
-  Industrial Light/Medium Policy Area
-  Industrial Heavy Policy Area
-  Country Residential Policy Area
-  Agriculture Large Holdings Policy Area



This map represents a broad and conceptual illustration of the desired land development structure and is not intended to provide site specific direction to land use regulation.

Source: 2007 Strathcona County Municipal Development Plan Bylaw 1-2007

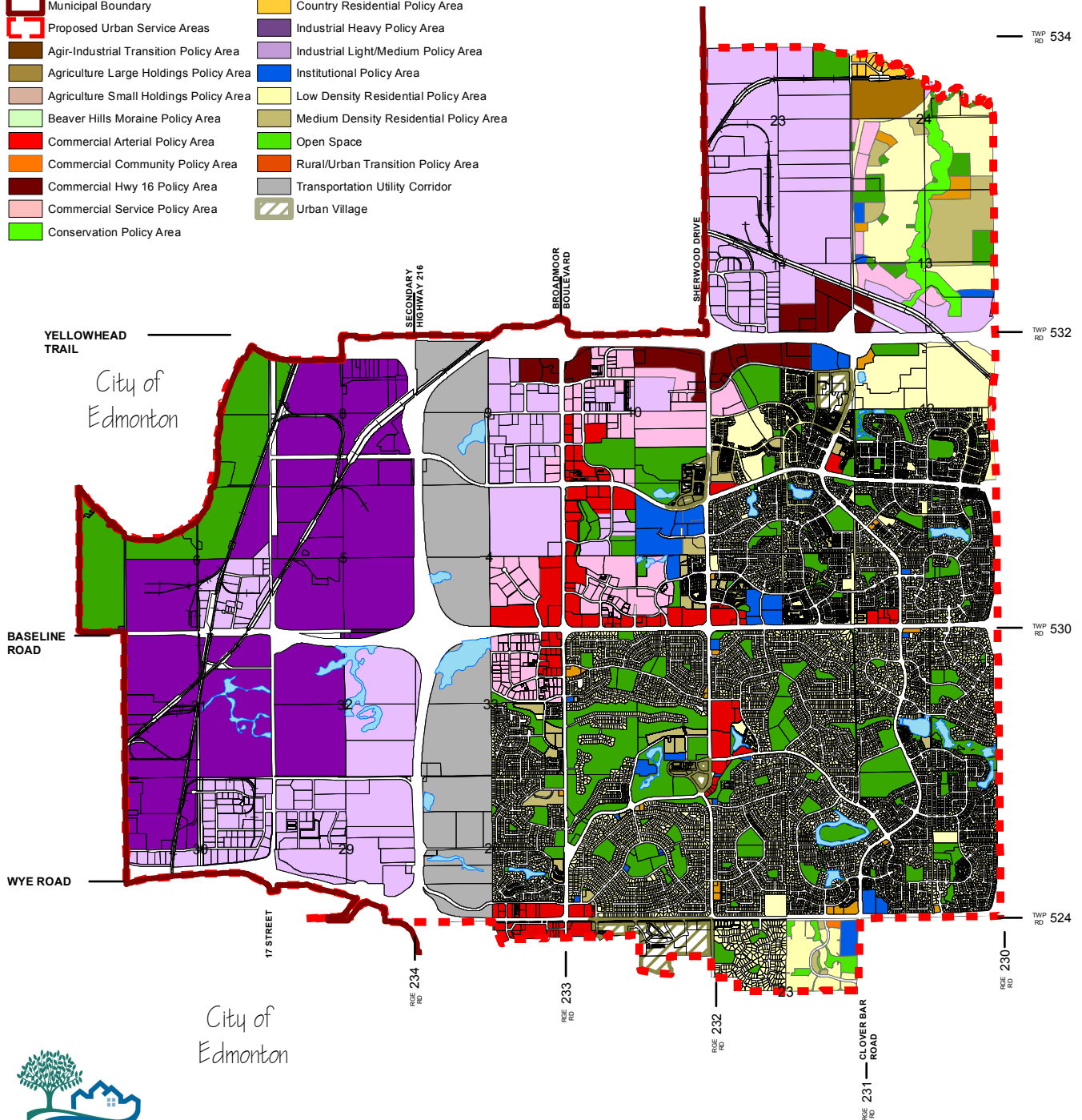
Last Amended By Bylaw 1-2015, August 30, 2015
Date Adopted By Bylaw 1-2007, May 29, 2007
Prepared By: [Name]
Approved By: [Name]

2007 Strathcona County Municipal Development Plan Bylaw 1-2007 Policy Areas Map #13

30

Legend

	Municipal Boundary		Country Residential Policy Area
	Proposed Urban Service Areas		Industrial Heavy Policy Area
	Agri-Industrial Transition Policy Area		Industrial Light/Medium Policy Area
	Agriculture Large Holdings Policy Area		Institutional Policy Area
	Agriculture Small Holdings Policy Area		Low Density Residential Policy Area
	Beaver Hills Moraine Policy Area		Medium Density Residential Policy Area
	Commercial Arterial Policy Area		Open Space
	Commercial Community Policy Area		Rural/Urban Transition Policy Area
	Commercial Hwy 16 Policy Area		Transportation Utility Corridor
	Commercial Service Policy Area		Urban Village
	Conservation Policy Area		



W:\Projects\Proposed\Strathcona County\Development
Plan\MDP\Map\Map_13_Policy_Areas.docx

This map represents a broad and conceptual illustration of the desired land development structure and is not intended to provide site specific direction to land use regulation.

Last Amended By: Bylaws 29-2015 & 31-2015, July 4, 2015
Date Adopted By: Bylaw 1-2007, May 29, 2007