

# TEO Construction Season Overview

April 8, 2025

**Presenters:**

Kevin Cole – Director, Transportation Engineering and Operations

Garry Johnston – Manager, Project Construction and Engineering

Ryan Wilson – Manager, Transportation Operations

# 2025 Construction season overview

- Annual program locations
- Traffic safety and pedestrian safety locations
- Capital improvements
- Open space projects
- Operations and maintenance
- Construction survey and next steps

# Annual programs

- Urban Road Rehabilitation
  - Residential Road Rehabilitation program
  - Arterial Road Rehabilitation program
- Rural Road Rehabilitation program
- Parking Lot and Trail Rehabilitation program
- Bridge Replacement program
- Sidewalk Missing Links program
- Traffic and Pedestrian Safety Improvements program
- Annual Traffic Signal and Intersection Replacements program

# Residential Road Rehabilitation program

- Regency Drive
- Ridgerock Point
- Foxboro Drive
- Regal Way
- Regal Court
- Oak Street
- Meadowview Drive
- Clarkdale Boulevard
- Primrose Boulevard
- Carson Drive
- Chatwin Drive
- Crimson Drive
- Cactus Way



# Arterial Road Rehabilitation program

- Lakeland Drive from Sherwood Drive to Highway 21
- Emerald Drive from Sherwood Drive to Clover Bar Road
- Sherwood Drive from Broadmoor Boulevard to Brentwood Boulevard
- 34 Street from Sherwood Park Freeway to Baseline Road



# Rural Road Rehabilitation program

## Grid roads

- Range Road 215 from Wye Road to Township Road 522
- Range Road 224 from Highway 16 to Township Road 534
- Range Road 225 from Township Road 534 to The Pointe north entrance
- Range Road 232 from Township Road 510 to Highway 14
- Township Road 510 from Range Road 224 to Highway 21
- South Cooking Lake Road from Highway 14 to Highway 14

# Parking lots and trails

## Parking lots

- Fire Stations 1, 3, 4, and 5

## Trail rehabilitation

- Broadmoor Lake Trail
- Clover Bar Road (east side) from Highland Drive to Fire Station 5
- Clover Bar Road (west side) from Craigavon Drive to Baseline Road
- Clarkdale Meadows Pond Trail



# Bridge Replacement program

## Bridge culvert replacement

- Range Road 221,  
35 metres north of Highway 16
- Township Road 515,  
400 metres east of Range Road 210

## Culvert lining and trenchless culvert construction

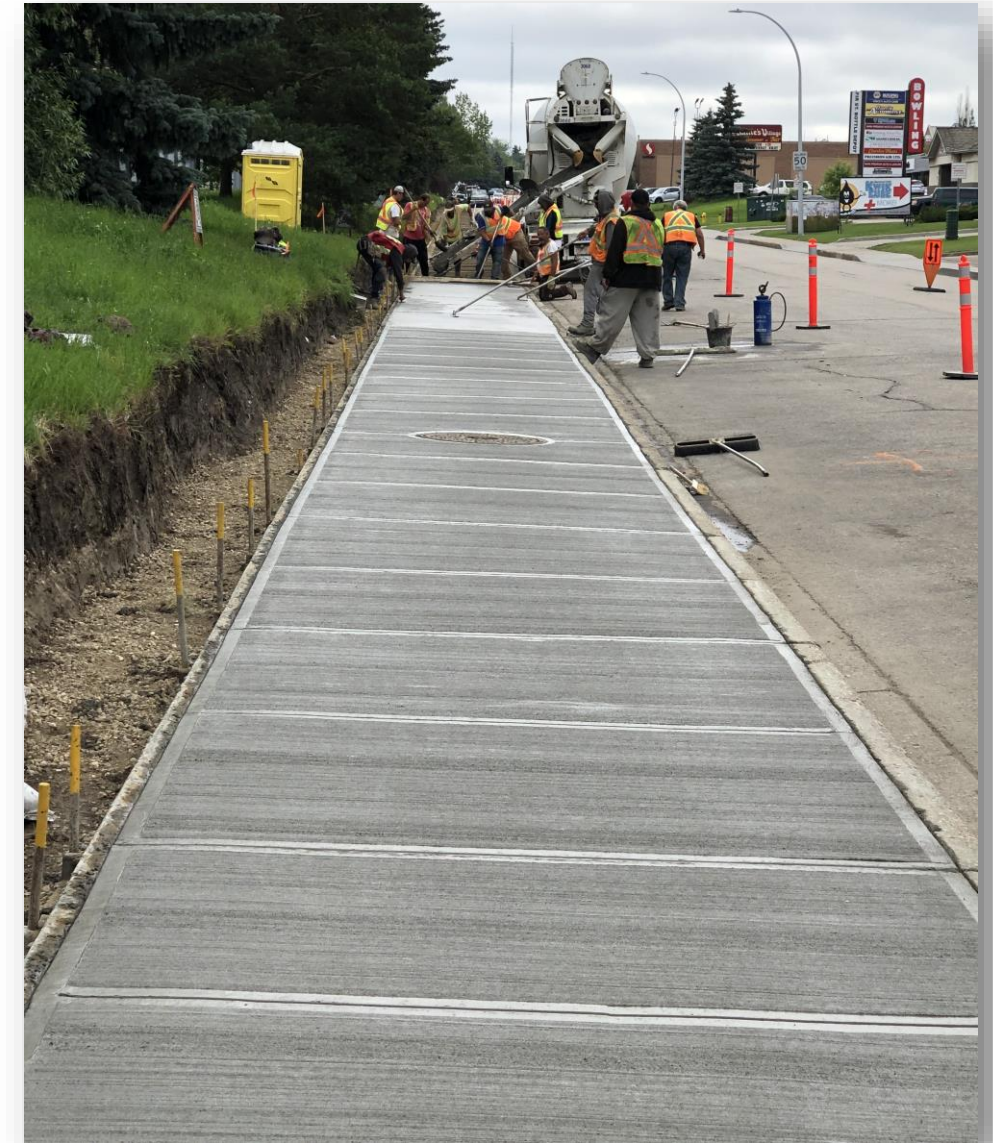
- 34 Street, 575 metres north of  
Sherwood Park Freeway





# Sidewalk Missing Links program

- Baseline Road, north side, from Broadview Drive to Broadmoor Boulevard



# Traffic Signal and Intersection Replacement program

- Village Drive and Sherwood Drive
- Tamarack Avenue and Sherwood Drive



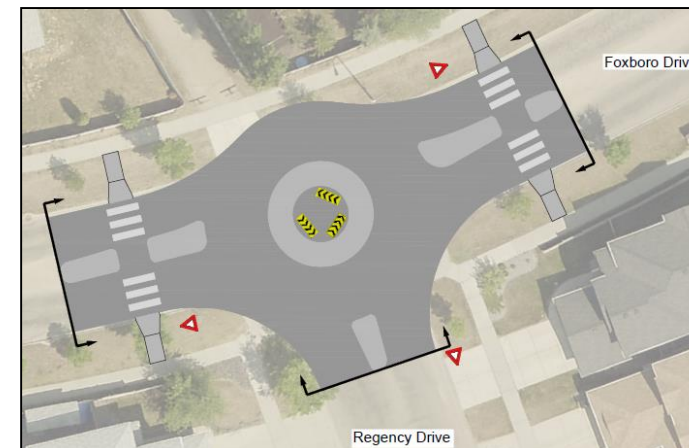
# Traffic and Pedestrian Safety Improvements program



# Foxboro and area improvements



- New crosswalks (1E, 2D)
- Roundabout at Foxboro Drive and Regency Drive (1C)
- Curb extensions and crosswalk/sidewalk realignments (1A, 1B, 1F)
- Median islands (2B, 2C)
- Cul-de-sac island extension (2E)



# Rapid rectangular flashing beacons

- Aspen Trail and Abbey Road
- Abbey Road and Augustine Crescent
- Festival Way and Prairie Walk
- Ritchie Way east of Clover Bar Road
- Bothwell Drive and Bothwell Place



# Speed hump locations

- Cranberry Drive at Cornwall Road (*temporary to permanent*)
- Heron Road and Falcon Drive
- Heron Road and Robin Street (*raised crosswalk*)
- Crimson Drive
  - Jim Common South
  - Jim Common North
  - South of Christopher Close



# Curb extensions

- Meadowview Drive and Primrose Boulevard



# Median islands

- Carson Drive and Chelsea Way



# Crosswalk relocation/realignment

- Crimson Drive and Jim Common Drive South





# Cul-de-sac extension location

- Regency Drive and Ridgemont Way
  - Included in Foxboro and area improvements



# Roadside barrier location

- Range Road 225 north of Township Road 534  
*(pending budget availability)*



# Beauvista Drive and Oak Street

- Intersection issues:
  - Speed and stop sign violations
  - Visibility and sightline concerns
  - Pedestrian safety concerns
  - Traffic conflict points
  - School traffic issues
- Improvements include a compact roundabout and curb extensions with added crosswalks
- Changes will:
  - Narrow the road to create safer pedestrian crossing
  - Reduce conflict points



# Capital improvements



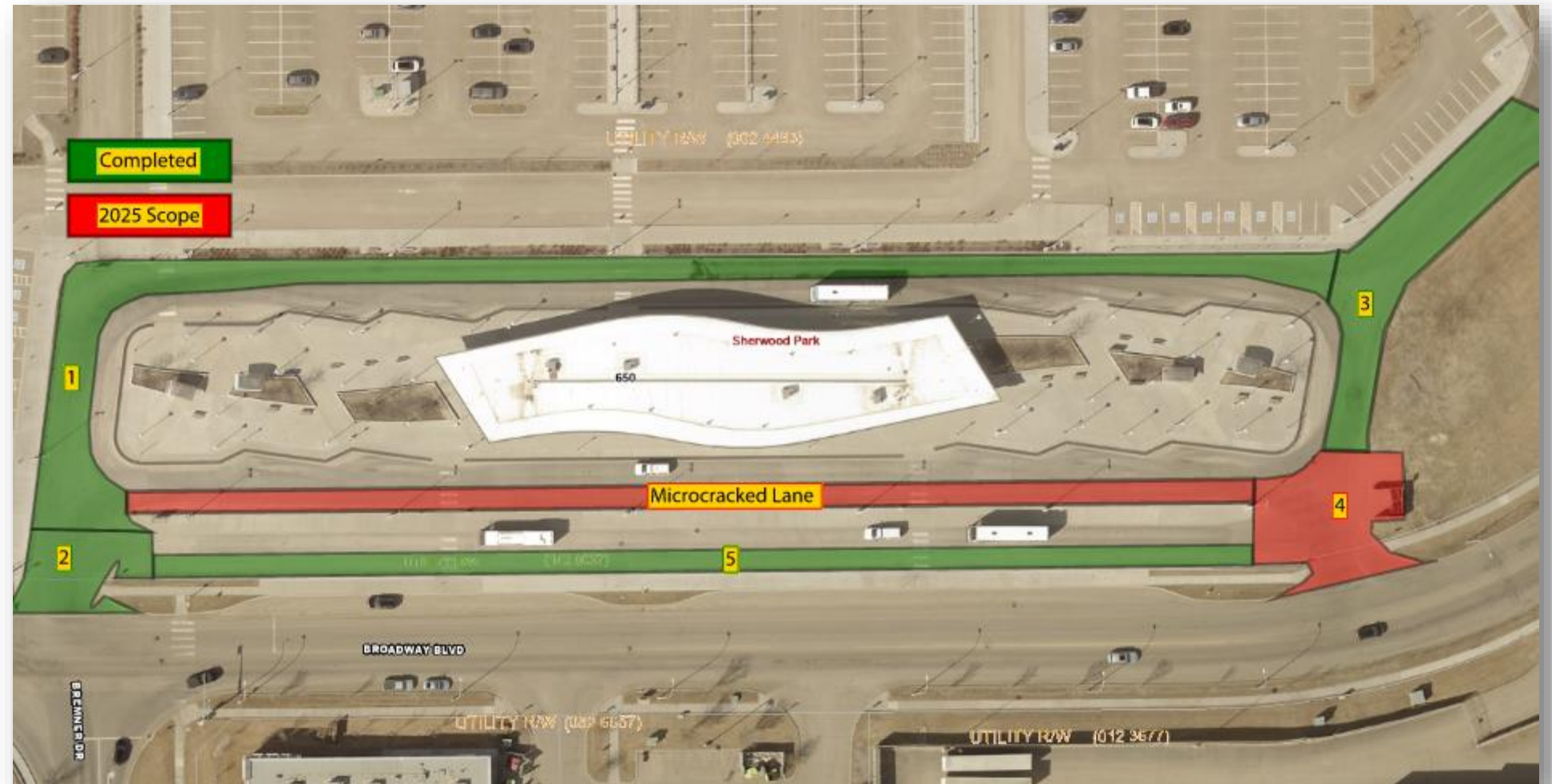
# Bethel Transit Terminal rehabilitation

## 2024 (green):

Completed Areas 1, 2, 3, 5 and all spot concrete repairs on the walking platform

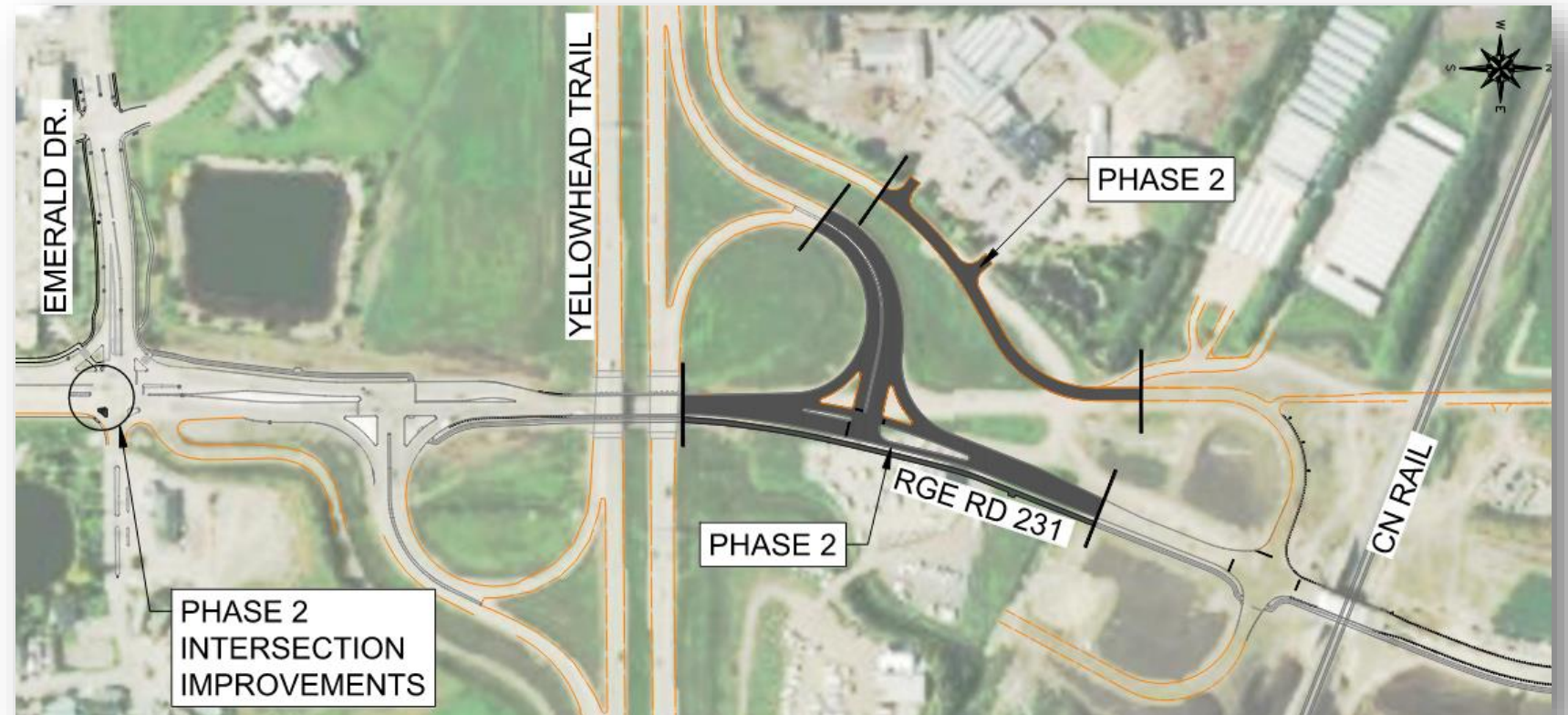
## 2025 (red):

Completing Area 4 and rehabilitation of the microcracked lane



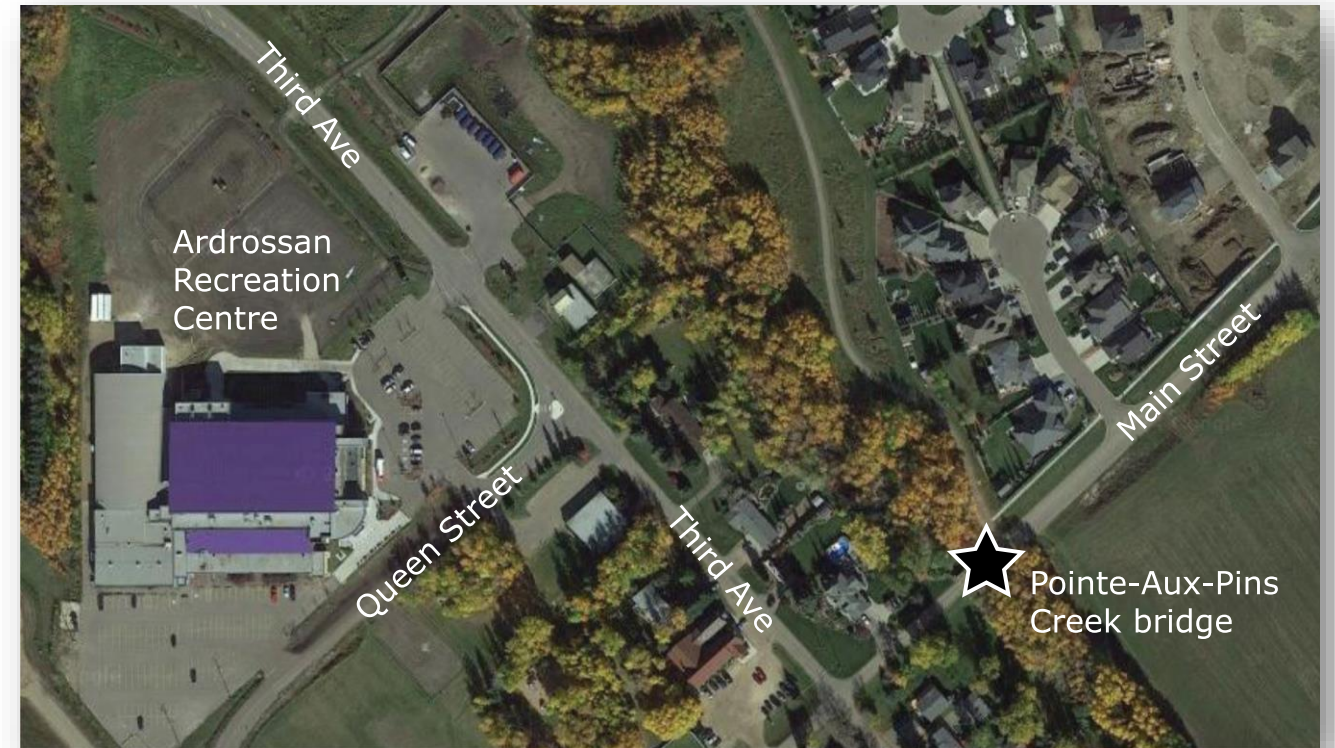
# North of Yellowhead Range Road 231 Phase 2

- Construct remaining road and trail through Outback RV from Highway 16 overpass to the southside of the CN Railroad tracks
- Improve intersection at Emerald Drive and Range Road 231

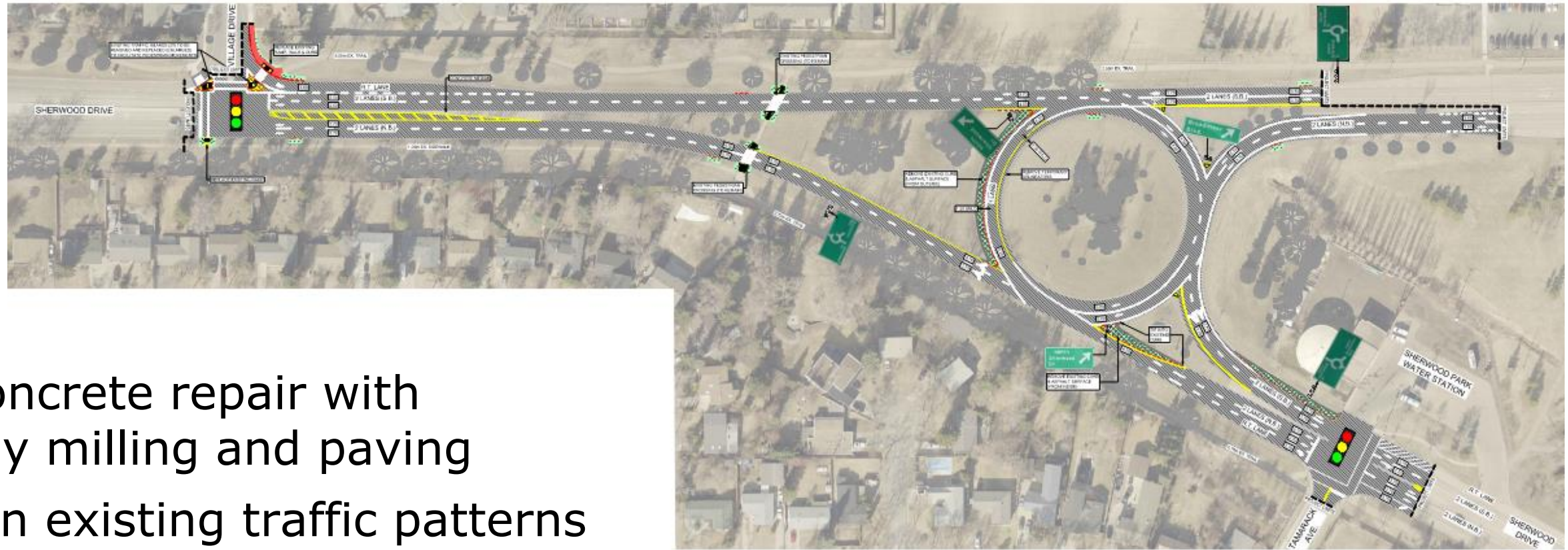


# Ardrossan Main Street bridge

- Replace bridge over Point-aux-Pins creek
- Construct new girder bridge on a steel substructure with a multi-use trail
- Restore existing roadway
- Construct sidewalk to connect northeast residential area to Third Ave and Ardrossan Recreation Centre



# Sherwood Drive and Broadmoor Boulevard traffic circle rehabilitation



- Spot concrete repair with roadway milling and paving
- Maintain existing traffic patterns
- Curb improvements to southbound inside lane with improved striping and signs
- Improvements to Village Drive and Tamarack Avenue intersections

# Accessible parking

- Addition of accessible parking ramps and/or signage near green spaces and parks
- 20 locations completed in 2024
  - 16 sign and ramp; 5 sign only
- 24 locations planned in 2025 (*pending final design*)
  - 17 sign and ramp; 7 sign only.





# Centre in the Park walkways

- Final phase of paving stone repairs along Festival Lane and Festival Avenue



# Transit bus pad construction

- Multi-year project to improve accessibility for transit riders by building concrete pads at bus stops
- 56 locations in 2025



*Locations chosen by Transit with project management support from TEO*

# Open space projects

- Trail, parking lot and amenities at Edmonton/Strathcona County pedestrian footbridge on Township Road 540
- New shade structures at Cottonwood Park, Strathcona Athletic Park and Strathcona Wilderness Centre
- St. Nicholas School tennis and basketball court lifecycle replacement
- Heritage Hills half-court Basketball and Playground (Community Partnership Program)
- Peters Pond trail in Clarkdale Meadows



*Open space projects are planned by RPC with project management support from TEO*

# Operations



# Gravel road rehabilitation locations

- **Gravel road rehabilitation**

- Range Road 211 from Township Road 534 to Township Road 540
- Township Road 534 from Range Road 211 to Range Road 212
- Township Road 514 from Range Road 222 to Township Road 514A
- Township Road 514 from Range Road 223 to Range Road 224
- Township Road 514A from Range Road 222 to Range Road 223

- **Dust-controlled gravel overlay**

- Range Road 234 from Township Road 512 to Township Road 514

# Microsurfacing locations

## Urban locations

- Armitage Crescent
- Armitage Close
- Armitage Road
- Ashmore Way
- Ashmore Bay
- Seneca Road
- Cree Road from Seneca Road to Athabasca Avenue
- Sioux Road from Broadmoor Boulevard to Chippewa Road

## Rural locations

- Township Road 522 from Highway 21 to Range Road 224
- Range Road 213 from Township Road 524 to Township Road 530
- Meadowlark Hills
- Donaldson Park
- Hude Estates

# 2024 Construction survey highlights

## Overall highlights

- 302 responses (74% urban; 26% rural)
- 91% of respondents felt “at least somewhat informed”
- 73% expressed satisfaction with construction quality

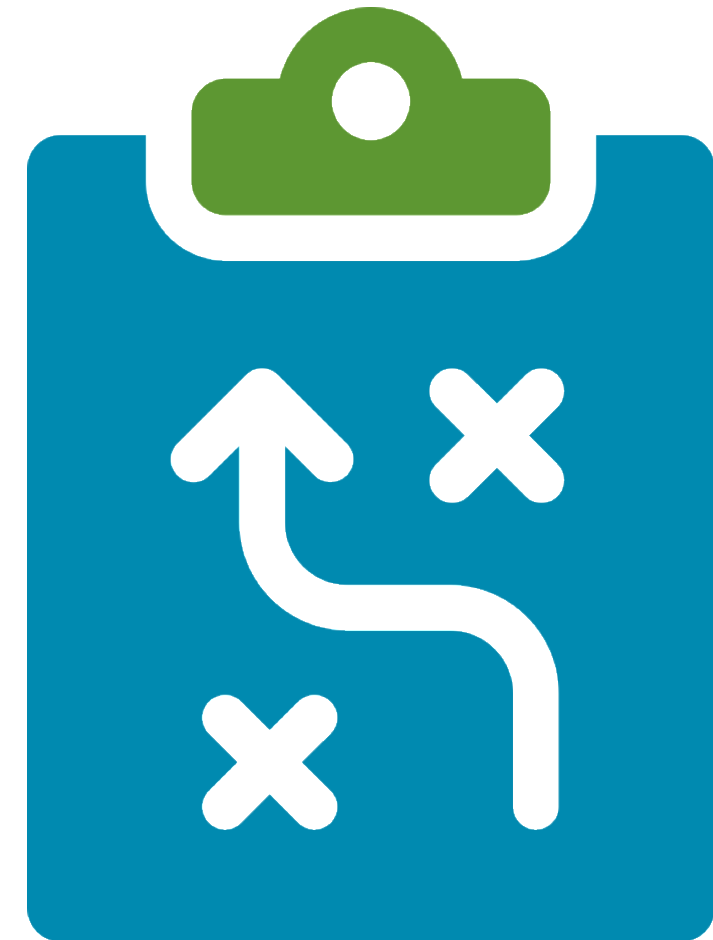
## Review specific feedback related to:

- Urban and rural differences
- Timing and how information is shared



# Next steps

- Complete project procurement
- Confirm final project list and budget required
- Project communications planning underway





# Questions

