



Baseline Bridge Crossing

Priorities Committee Meeting

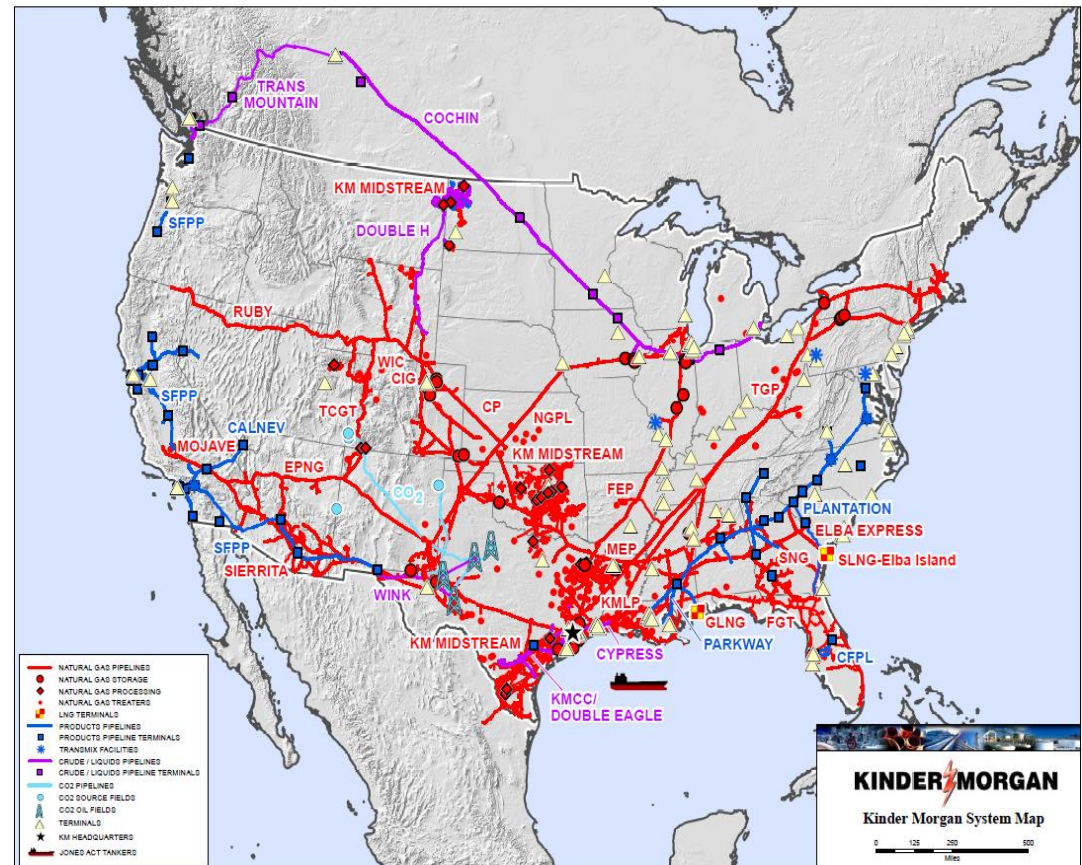


June 14, 2016

Unparalleled Asset Footprint

Largest Energy Infrastructure Company in North America

- Over 12,000 employees in Canada and the U.S.
- \$18.2 billion of currently identified organic growth projects
- Largest natural gas network in North America
 - Own an interest in/operate ~178,670 kms of natural gas pipelines
- Largest independent transporter of petroleum products in North America
 - Transport ~2 MMBbl/d
- Largest transporter of CO₂ in North America
- Largest independent terminal operator in North America ^(a)
 - Own an interest in or operate 130 liquids/ dry bulk terminals
- Only Oilsands pipe serving West Coast
 - Transports ~300 MBbl/d to Vancouver/ Washington State; proposed expansion takes capacity to 890 MBbl/d



(a) Includes KMI/BP JV

Kinder Morgan Facilities

TransMountain Facility

- In-service 1953
- Contains 20 tanks; capacity of ~3 million barrels of non-merchant storage

Edmonton South Terminal Expansion

- In-service 2013/2014
- Contains 15 tanks; capacity of ~5 million barrels of merchant storage

North 40 Terminal

- In-service 2008
- Contains 9 tanks; capacity of ~2 million barrels of merchant storage

Alberta Crude Terminal

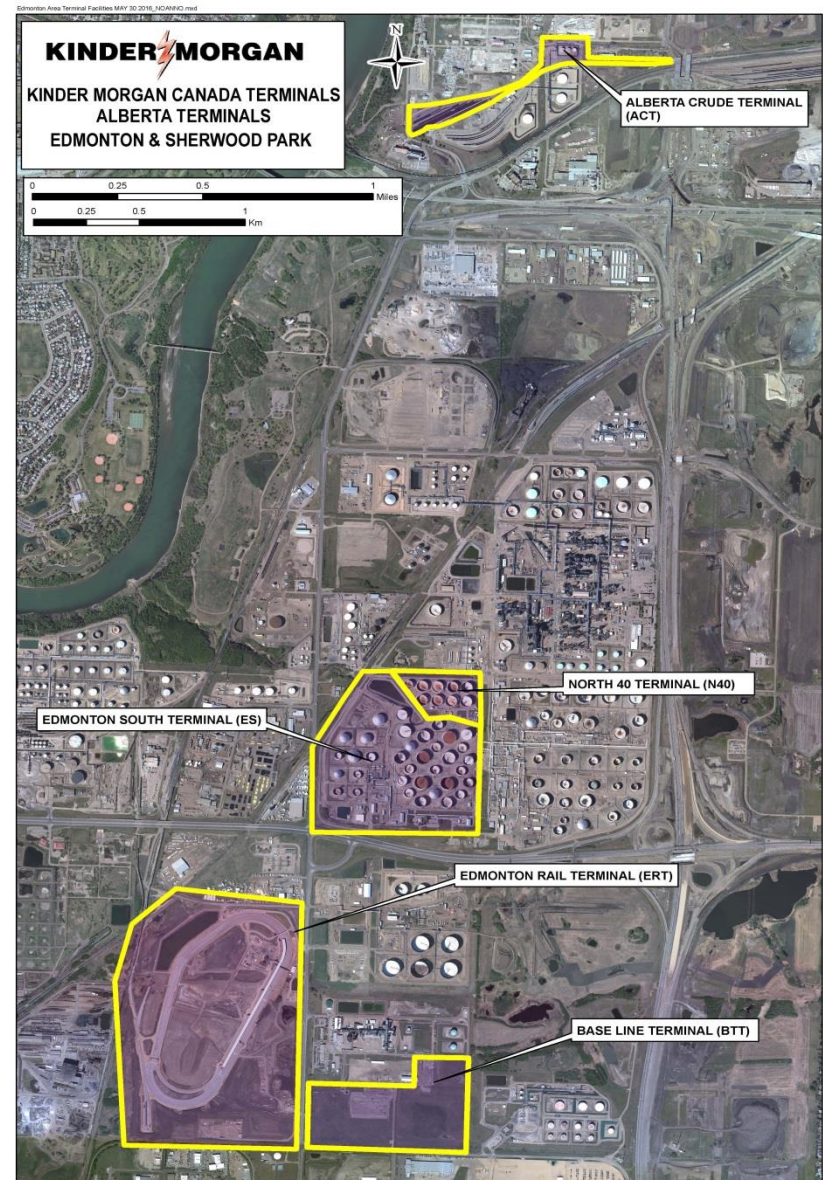
- In-service 2014
- 50/50 Joint Venture with Keyera
- Crude rail loading terminal with 35,000 barrels/day throughput

Edmonton Rail Terminal

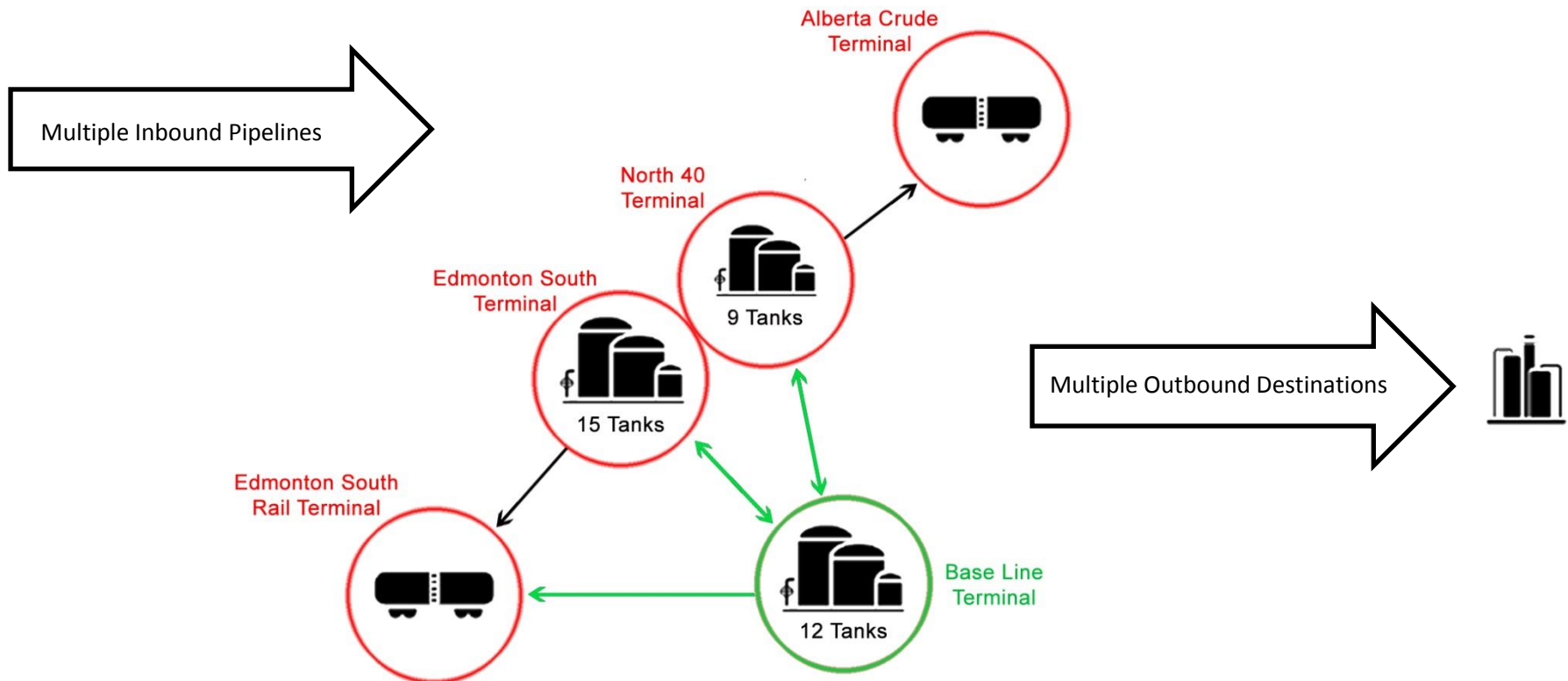
- In-service 2015
- 50/50 Joint Venture with Imperial Oil
- Crude rail loading terminal with 210,000 barrels/day throughput

Base Line Terminal

- Projected In-service December 2017
- 50/50 Joint Venture with Keyera
- Planned 12 tanks; capacity of 4.8 million barrels of merchant storage

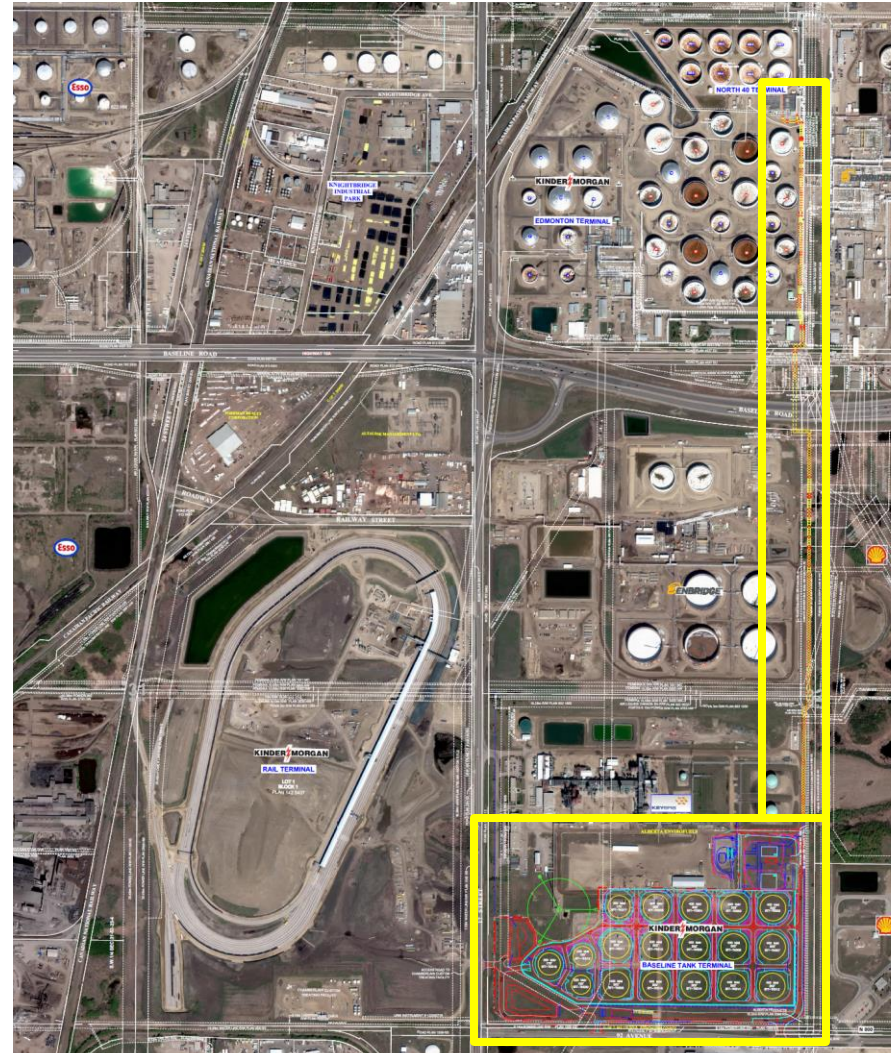


Kinder Morgan Facilities



Base Line Terminal Project Overview

- 50-50 Joint Venture between Kinder Morgan Canada Terminals and Keyera Corporation
- \$741 million project
- Construction of 12 crude oil tanks with 4.8 million barrels merchant storage capacity
- Includes a pipeline bridge over Baseline Road connecting North 40 Terminal and Edmonton South Terminal to the Base Line Terminal
 - designed for 16 pipes
 - initially 8 pipes will be installed
- Expected commissioning November 2017

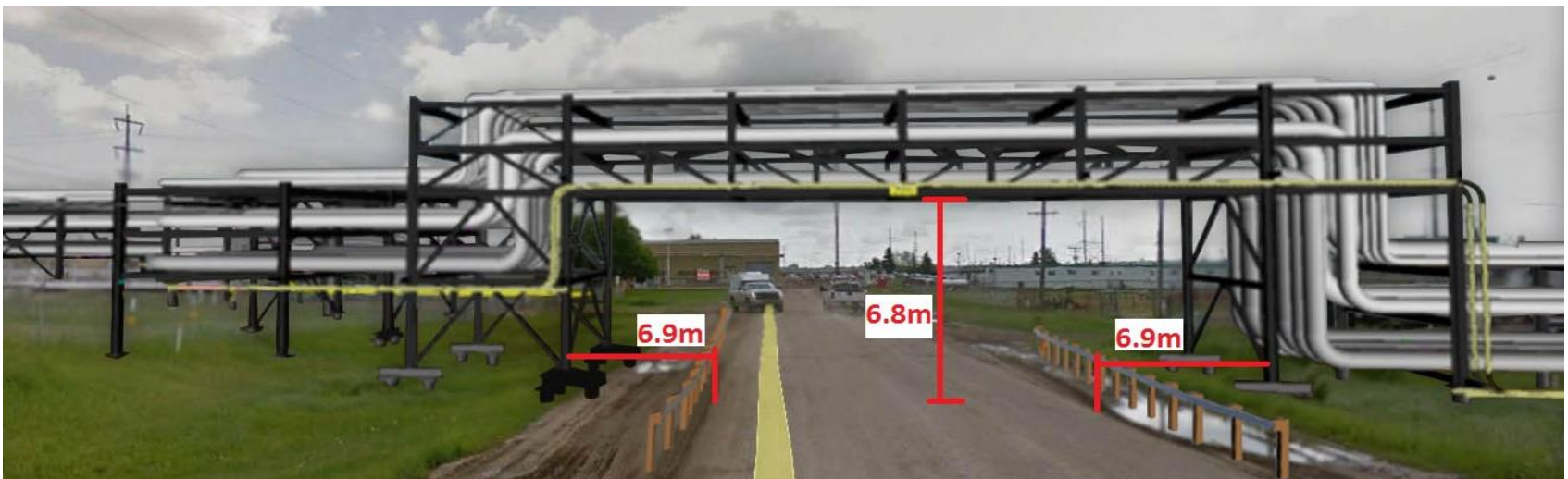


Baseline Road and 101A Avenue Crossings

Baseline Road



101A Avenue



Other Pipeline Bridges in Canada

Sarnia, ON



Montreal, QC



Bridge Option Advantages

Overhead Bridge option selected for the following reasons:

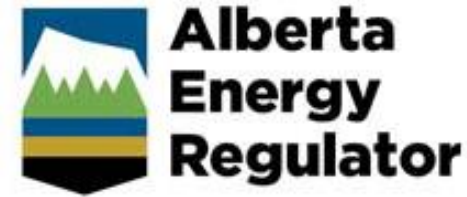
- Least impact to Baseline Road
 - Protects against road heaving
 - Minimizes lane closures during construction
 - Shortest installation schedule
- Lowest construction risk and best constructability
 - Reduced installation footprint, which greatly reduces the environmental impact during construction
- Ready access for maintenance and monitoring
- Maximizes future expandability and provides an industry solution



Bridge Regulatory Oversight & Project Approvals

Alberta Energy Regulator

- Directive 56 Pipeline License
(April 12, 2016)



Alberta Transportation

- Roadside Development Permit
- Crossing Agreement



Strathcona County

- Bridge Structure Agreement
- Crossing Agreement



Bridge Safety and Integrity

Vehicle Impact Mitigation Measures

- Clearance of 7 meters
- Abutments designed to withstand 200 ton impact

Leak Prevention and Response

- Welded pipe connections
- Coated pipelines to prevent external corrosion
- Regular inspection, maintenance and annual testing of piping and bridge
- 24/7 manned Control Center in Strathcona County



Designed by a professional engineering firm with extensive urban bridge design experience

Fire Prevention and Protection

- Prevention of accumulation of ignitable vapours by natural ventilation
- Spark prevention by engineering and operational controls

Security and Safety

- Fencing to restrict public access
- Kinder Morgan personnel and security cameras will monitor bridge
- Working collaboratively with Strathcona County Emergency Services to ensure public safety

Bridge Environmental Considerations



Air Emissions/Odours

- No operational emissions because pipes will be welded (no flanges) and vents will be closed
- Potential for minimal emissions/odours during pipe maintenance



Water

- Leak potential extremely low - welded pipes and external protective coating
- Spill response procedures in place
- Stormwater runoff directed into County stormwater system



Land

- Minimal environmental footprint on industrial land

Bridge Construction Phases & Schedule

Key Construction Activities	Start	Finish
Piling and Abutments	Sept. 2016	Dec. 2016
Stage and Install Girders	Jan. 2017	Feb. 2017
Install Bridge Deck	Feb. 2016	Mar. 2017
Pipeline Installation	Mar. 2017	May 2017
Electrical Installation	May 2017	July 2017
Pipeline Hydrotesting	July 2017	Aug. 2017
Commissioning	July 2017	Sept. 2017

Subject to change

Project Benefits

Employment - Base Line Terminal Project

- Average 450 workers/day during peak construction (union & non-union)
- When completed - 23 Full Time Equivalent jobs in Strathcona County

Taxes

- Base Line Terminal project will contribute over \$3 million annually in Municipal taxes when operational
- Will contribute additional Provincial and Federal taxes

Bridge Crossing - Industry Solution

- Shared solution to cross Baseline Road for companies with facilities in Strathcona County

Project Significance

- The Base Line Terminal project has significant market interest due to need for increased storage capacity and connection optionality in the area
- The Base Line Terminal project supports the local economy and Alberta's energy industry, including producers, refiners and marketers

For Further Information

Public Information Sessions:

June 14, 2016

Strathcona County Community Centre

401 Festival Lane, Sherwood Park, AB

11:00 am to 1:00 pm in the Agora Room

5:00 pm to 7:00 pm in Meeting Room #2

General Inquiries

300 5th Avenue SW Suite 2700

Calgary, AB T2P 5J2

Tel: (403) 514-6400

Fax: (403) 514-6401

Toll Free: (800) 535-7219

externalrelations@kindermorgan.com

Twitter: @KM_Canada

