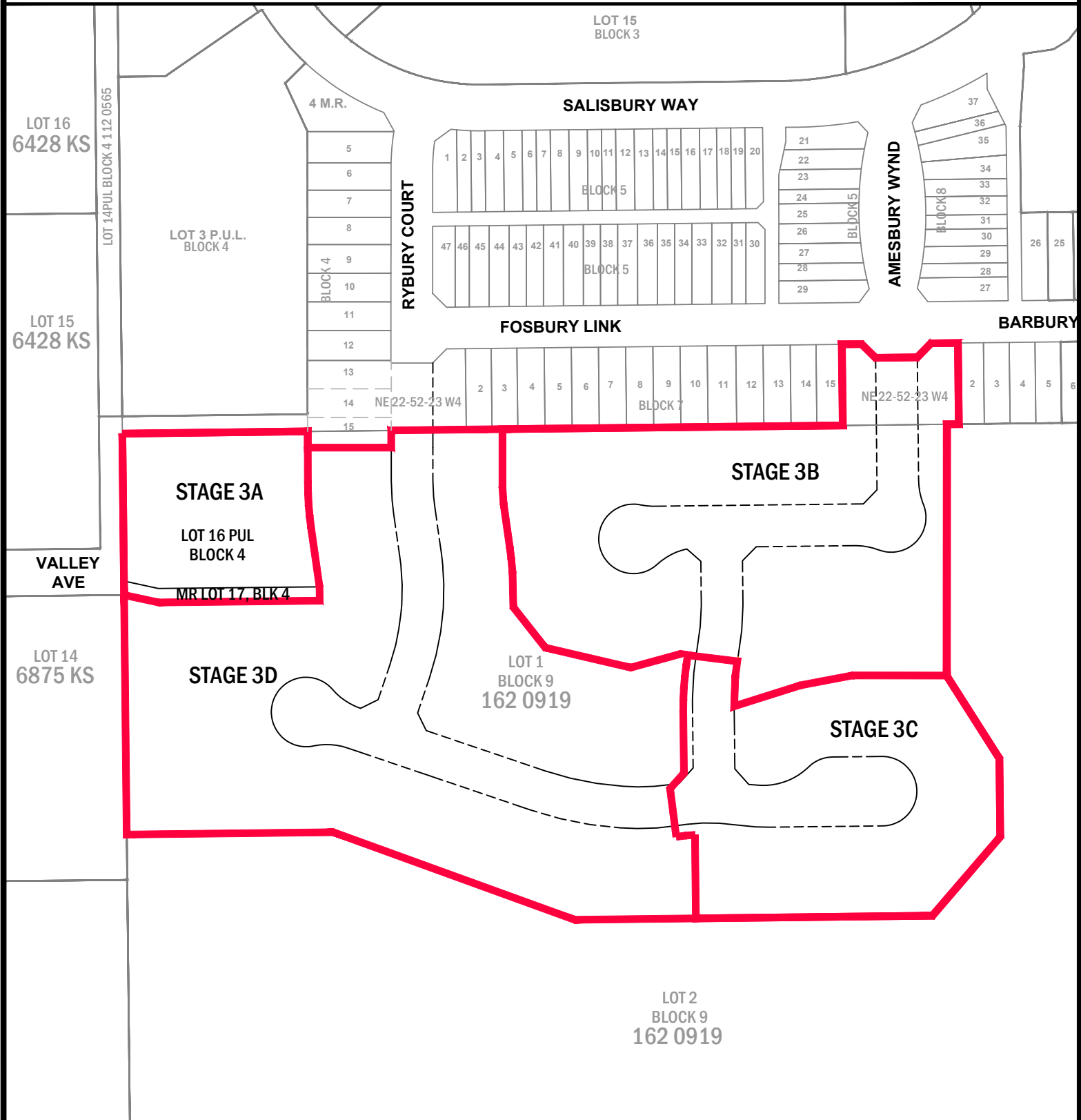



SCHEDULE "B" Page 1 of 2 **Development Area - Salisbury Village Phase 2 Stage 3**



SALISBURY VILLAGE PHASE 2 STAGE 3 **NE 22-52-23 W4**

 Overall Development Boundary
 Total Area = 7.26 ha (17.94ac) ±

Drawn By: J. Cavers

Date Drawn: Aug 08, 2016

Scale: Not to Scale

File No.: 4050-2016S011

Revision Date:

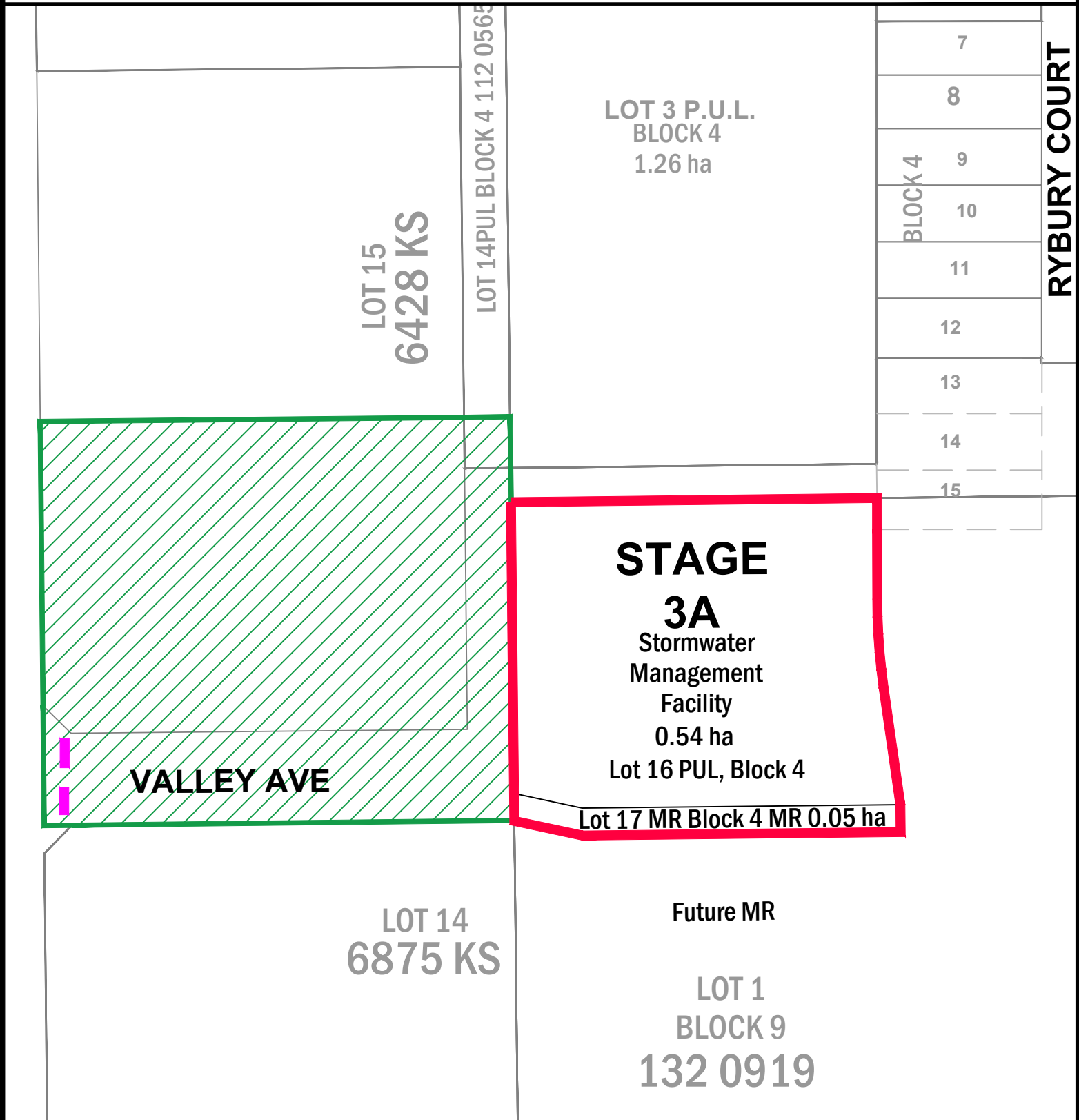
Revision No.

Dwg. No.:


PLANNING & DEVELOPMENT SERVICES

 STRATHCONA
 COUNTY

SCHEDULE "B" Page 2 of 2
Development Area - Salisbury Village Stage 3A



SALISBURY VILLAGE Stage 3A
NE 22-52-23 W4

 Total Area = 0.59 ha (1.46 ac) ±
 Gross Developable Area = 0.59 ha (1.46 ac) ±
 Lot Yield - 1 MR - 0.05 ha (0.12 ac) ±
 1 SWMF - 0.54 ha (1.33 ac) ±



Offsite Improvement Area



T- Bollards

Drawn By: J. Cavers

Date Drawn: Aug 08, 2015

Scale: Not to Scale

File No.: 4050-2016S011

Revision Date:

Revision No.

Dwg. No.:

PLANNING & DEVELOPMENT SERVICES
 STRATHCONA
COUNTY

