

# Strathcona County Aerial Imagery

October 18, 2016

Assessment and Tax  
Information Technology Services

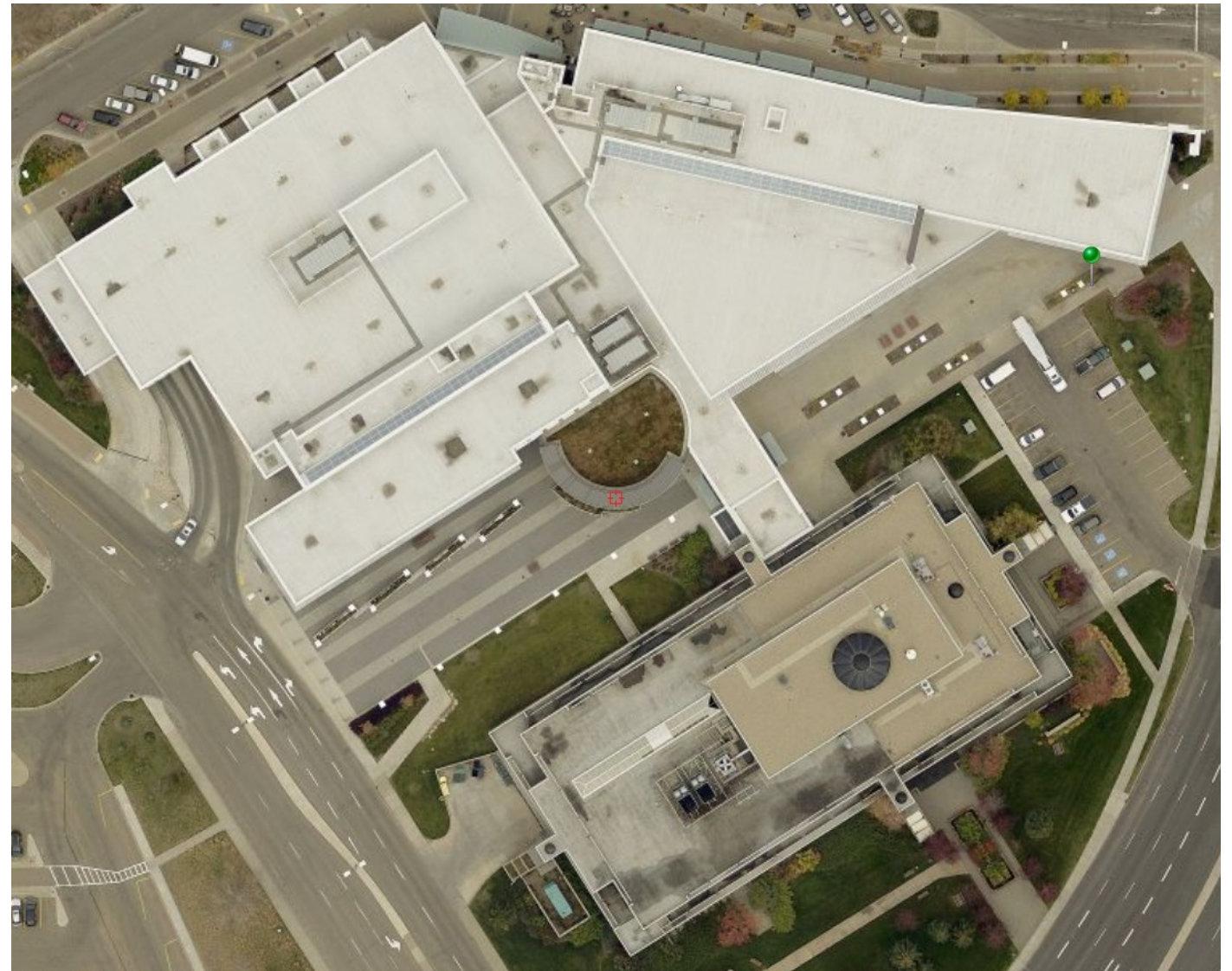
# Introduction

- This presentation will provide Council with information on the benefits that oblique imagery can have at Strathcona County.
- Aerial photographs are an important source of information for the County. They provide a rich and detailed view of the land, buildings, human activity, and natural environment.
- This data has incredible detail and depth, it tells many stories over time, and it is a point of reference for everyone.
- Strathcona County has collected aerial photography for many years providing a historical record of our landbase.
- Traditionally the aerial imagery we have acquired has been orthophotos; however, with technological advancements in aerial photography we are now proposing to acquire oblique imagery.

# Orthogonal Imagery

## Orthogonal Imagery

- Currently acquisition is every two years
- Colour aerial photography full County coverage at 10cm
- Traditional top down view
- Provides location information





# Oblique Imagery



## Oblique Imagery

- Captured from north, south, east and west to provide a 360-degree view
- Information rich
- Provides location and height information
- Requires specialized software



# Smeltzer House



View from directly above



South view



North view



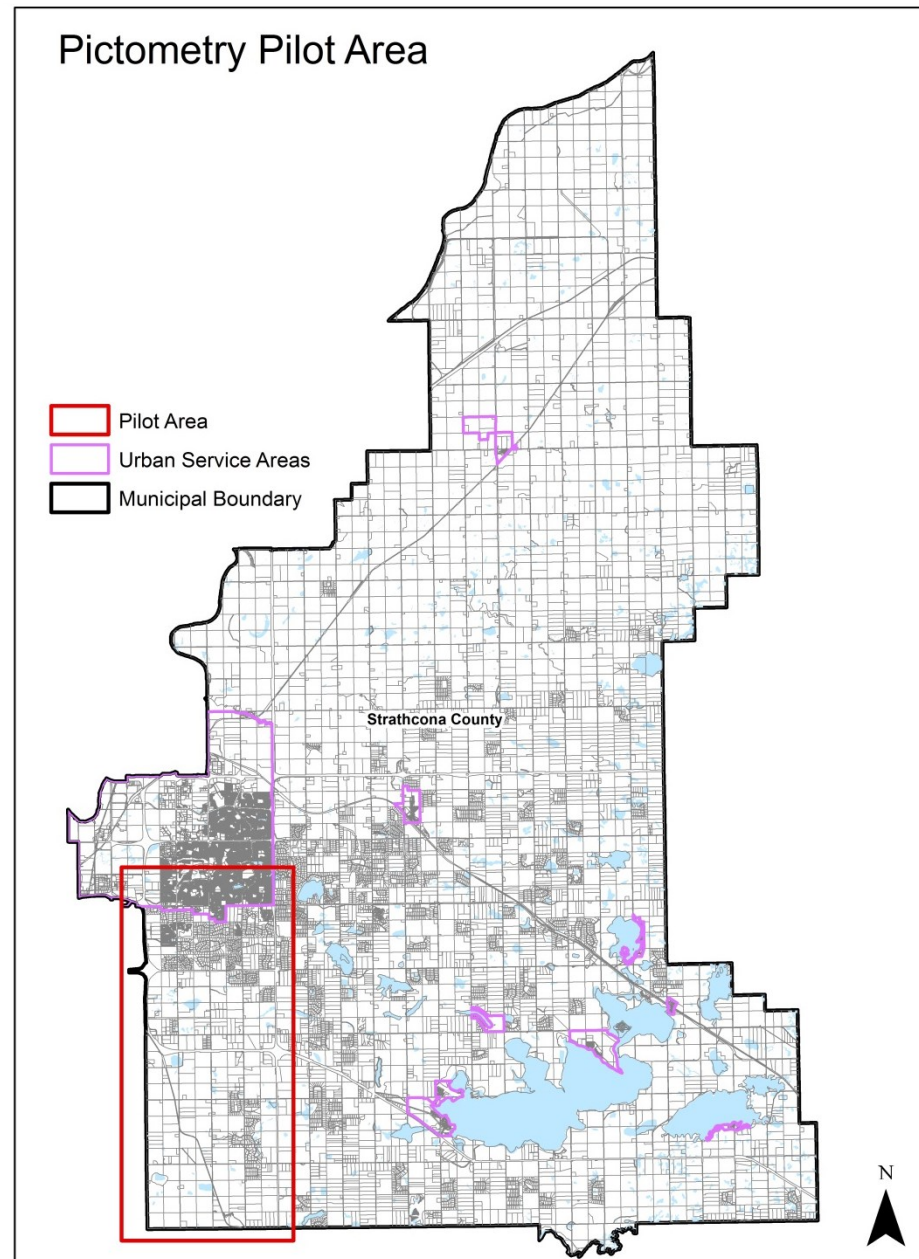
West view



East view



# Pilot Project Description



- Assessment and Tax (ASMTX) and Information Technology Services (ITS) completed a pilot study to explore the use of oblique imagery as a source of information for the annual property assessment program.
- Timeline was from Fall 2015 to Spring 2016.
- Area was comprised of 5000 parcels in both urban and rural areas (~160km<sup>2</sup>).
- Assessors incorporated oblique imagery into the annual inspection workflow.
- Additionally, Strathcona County Emergency Services and Planning and Development Services were engaged to participate in the pilot to evaluate the use of oblique imagery for operational activities.

# Pilot Project Summary

- The pilot project demonstrated that incorporating oblique imagery in the annual inspection workflow either directly, or indirectly, supported the ASMTX 2015 - 2018 Business Plan goals:
  - Goal 1:** A legislatively compliant annual assessment roll is prepared.
  - Goal 2:** Efficient and cost-effective property assessment and tax collection services are delivered.
  - Goal 3:** High performing professional staff are attracted and retained.
- The success of the pilot project demonstrated the following:
  - increased tax equity
  - enhanced customer service and satisfaction
  - minimized staff safety related issues
  - streamlined workflows/processes
  - improved property data integrity/quality

# Anticipated Benefits

Department	Benefits
County-Wide	Disaster recovery
Assessment and Tax	Property valuation, assessment roll maintenance
Capital Planning and Construction	Transportation capital planning
Economic Development and Tourism	Industrial, commercial and development attraction
Emergency Services	Fire, fire prevention, fire investigation Emergency management
Utilities	Asset management (hydrant inspections, infrastructure repair) Infrastructure planning
Planning and Development Services	Land use bylaw (amendments, preparation, enforcement) Permitting (issuance & code compliance)
Enforcement Services	Municipal bylaw enforcement
Recreation, Parks and Culture	Asset management (playgrounds and spray parks, turf/trails, outdoor venues, horticulture/forestry)
Transportation and Agriculture Services	Agriculture development & strategic planning Asset management (road maintenance, trail maintenance)



# Timeline

- 2016
  - Fall
    - Seek 2017 budget approval through Strathcona County budget process
- 2017
  - Spring
    - Fly oblique imagery
  - Summer
    - Receive oblique imagery
    - Conduct staff engagement
    - Release oblique imagery to staff
  - Fall
    - Receive orthogonal imagery
    - Release orthogonal imagery to public

# Summary

- There are many anticipated benefits to using oblique imagery in a municipal environment.
- The ASMTX pilot project demonstrated a number of benefits that increased efficiencies, customer satisfaction, and property data integrity and quality.
- It is recommended that Strathcona County invests in oblique and orthogonal imagery by supporting a change to improve the current aerial imagery investment. This will be initiated as a request in the 2017 Budget process (Acquisition of enhanced air photos and software).



# Questions?