

BYLAW 20-2016

A BYLAW OF STRATHCONA COUNTY IN THE PROVINCE OF ALBERTA, FOR THE PURPOSE OF AMENDING BYLAW 1-2007, AS AMENDED, BEING THE MUNICIPAL DEVELOPMENT PLAN.

WHEREAS it is deemed advisable to amend the Municipal Development Plan;

NOW THEREFORE, the Council of Strathcona County, duly assembled, pursuant to the authority conferred upon it by the *Municipal Government Act, R.S.A. 2000 c.-M-26* and amendments thereto, enacts as follows:

That Bylaw 1-2007, as amended, be further amended as follows:

1. The map titled Map #1 Fragmented County Residential Subdivisions Outside Policy Boundary is deleted and replaced with the map titled Map #1 Fragmented County Residential Subdivisions Outside Policy Boundary attached as Schedule A and forming part of this bylaw.
2. The map titled Map #1.1 Development Expansion Area is deleted and replaced with the map titled #1.1 Development Expansion Area attached as Schedule B and forming part of this bylaw.
3. The map titled Map #2 Recommended Pipeline Corridor is deleted and replaced with the map titled Map #2 Recommended Pipeline Corridor attached as Schedule C and forming part of this bylaw.
4. The map titled Map #3 Priority Environment Management Area's (PEMA) is deleted and replaced with the map titled Map #3 Priority Environment Management Area's (PEMA) attached as Schedule D and forming part of this bylaw.
5. The map titled Map #4 Fire Risk Model is deleted and replaced with the map titled Map #4 Fire Risk Model attached as Schedule E and forming part of this bylaw.
6. The map titled Map #5 Community Facilities – Rural is deleted and replaced with the map titled Map #5 Community Facilities – Rural attached as Schedule F and forming part of this bylaw.
7. The map titled Map #6 Community Facilities – Urban is deleted and replaced with the map titled Map #6 Community Facilities – Urban attached as Schedule G and forming part of this bylaw.
8. The map titled Map #7 Existing Confined Feeding Operations is deleted and replaced with the map titled Map #7 Existing Confined Feeding Operations attached as Schedule H and forming part of this bylaw.
9. The map titled Map #9 Transportation Map – Rural is deleted and replaced with the map titled Map #9 Transportation Map – Rural attached as Schedule I and forming part of this bylaw.
10. The map titled Map #10 Transportation Map – Urban is deleted and replaced with the map titled Map #10 Transportation Map – Urban attached as Schedule J and forming part of this bylaw.

11. The map titled Map #11 Joint Planning Study Area is deleted and replaced with the map titled Map #11 Joint Planning Study Area attached as Schedule K and forming part of this bylaw.
12. The map titled Map #12 Policy Areas - Rural is deleted and replaced with the map titled Map #12 Policy Areas - Rural attached as Schedule L and forming part of this bylaw.
13. The map titled Map #13 Policy Areas – Urban Page 1 of 2 is deleted and replaced with the maps titled Map #13 Policy Areas - Urban Page 1 of 2 attached as Schedule M and forming part of this bylaw.
14. The map titled Map #13 Policy Areas – Urban Page 2 of 2 is deleted and replaced with the maps titled Map #13 Policy Areas - Urban Page 2 of 2 attached as Schedule N and forming part of this bylaw.
15. This Bylaw comes into effect after third reading and upon being signed.

Read a first time this 24<sup>th</sup> day of May, 2016.

CAPITAL REGION BOARD APPROVAL this 19<sup>th</sup> day of July, 2016.

Read a second time this \_\_\_\_\_ day of \_\_\_\_\_, 2016.

Read a third time and finally passed this \_\_\_\_\_ day of \_\_\_\_\_, 2016.

\_\_\_\_\_  
Mayor

\_\_\_\_\_  
Director,  
Legislative and Legal Services

Date Signed: \_\_\_\_\_

# 2007 Strathcona County Municipal Development Plan Bylaw 1-2007 Fragmented Country Residential Subdivisions Outside Policy Boundary Map #1

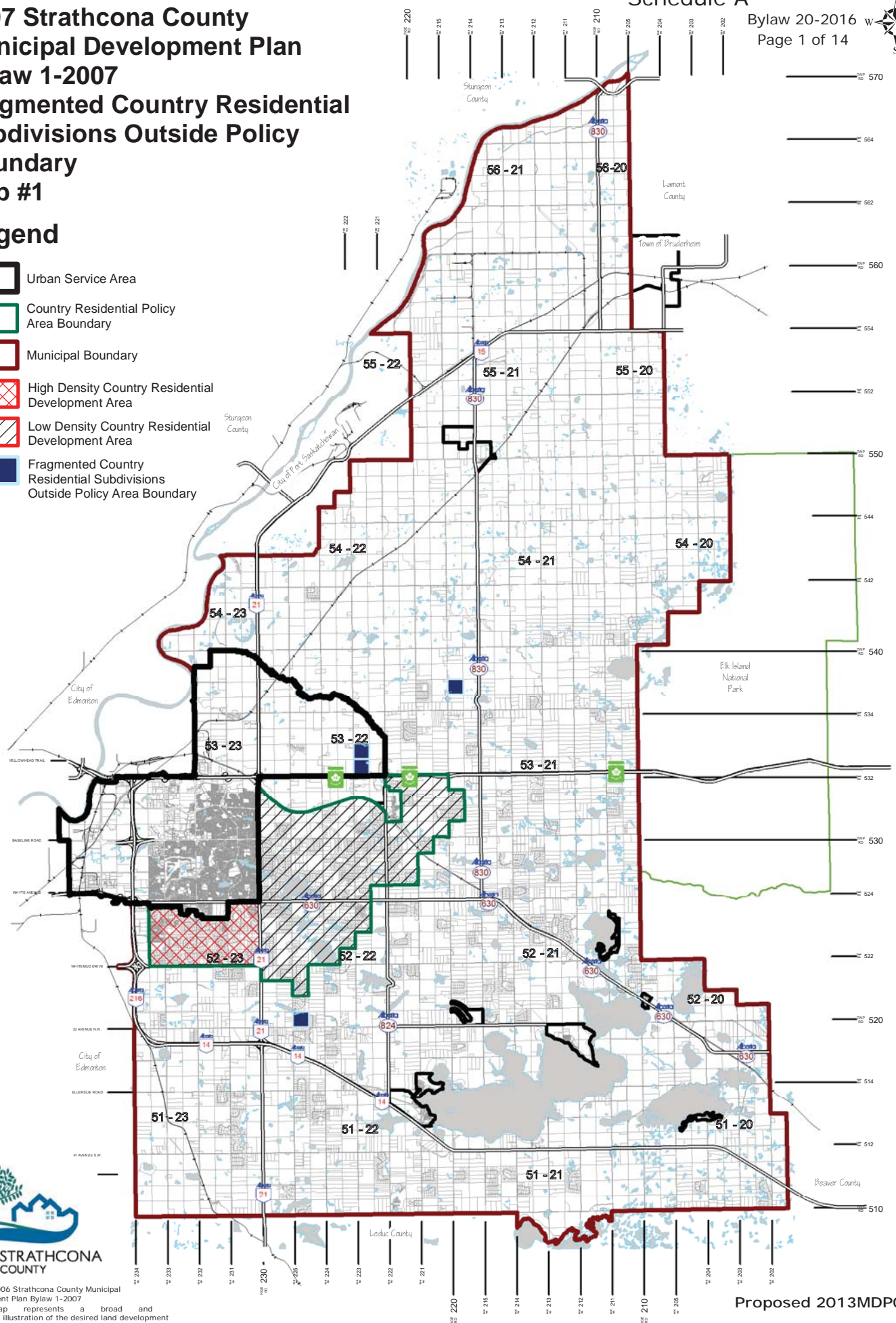
Schedule A

Bylaw 20-2016  
Page 1 of 14



## Legend

- Urban Service Area
- Country Residential Policy Area Boundary
- Municipal Boundary
- High Density Country Residential Development Area
- Low Density Country Residential Development Area
- Fragmented Country Residential Subdivisions Outside Policy Area Boundary



Source: 2006 Strathcona County Municipal Development Plan Bylaw 1-2007  
This map represents a broad and conceptual illustration of the desired land development structure and is not intended to provide site specific direction to land use regulation.





Proposed 2013MDP004

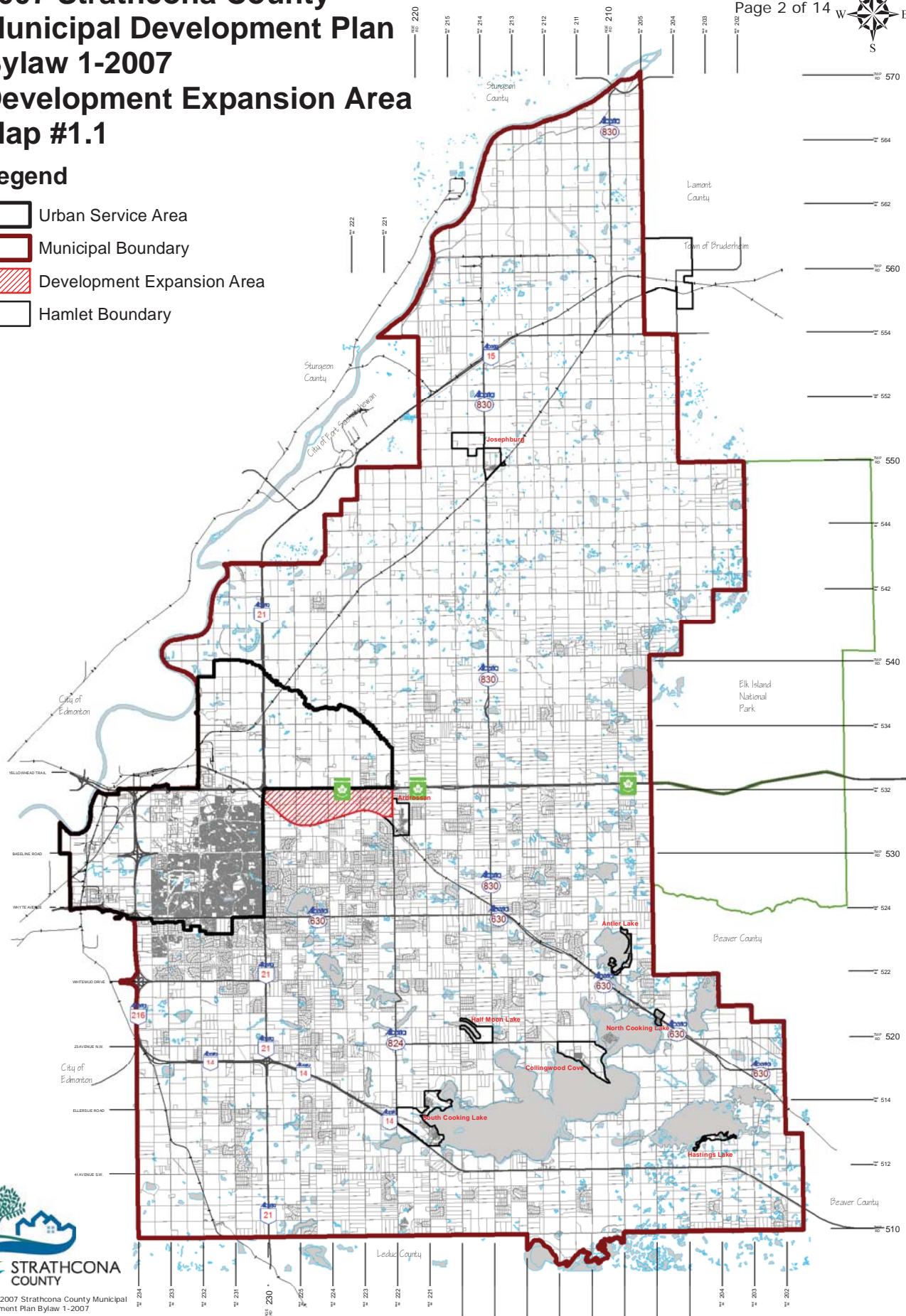
Last Amended By: Bylaw 15-2016, Oct 25, 2016  
Date Adopted By: Bylaw 1-2007, May 29, 2007



# 2007 Strathcona County Municipal Development Plan Bylaw 1-2007 Development Expansion Area Map #1.1

## Legend

-  Urban Service Area
-  Municipal Boundary
-  Development Expansion Area
-  Hamlet Boundary



Source: 2007 Strathcona County Municipal Development Plan Bylaw 1-2007  
Transition Area Master Plan, July 1995

This map represents a broad and conceptual illustration of the desired land development structure and is not intended to provide site specific direction to land use regulation.

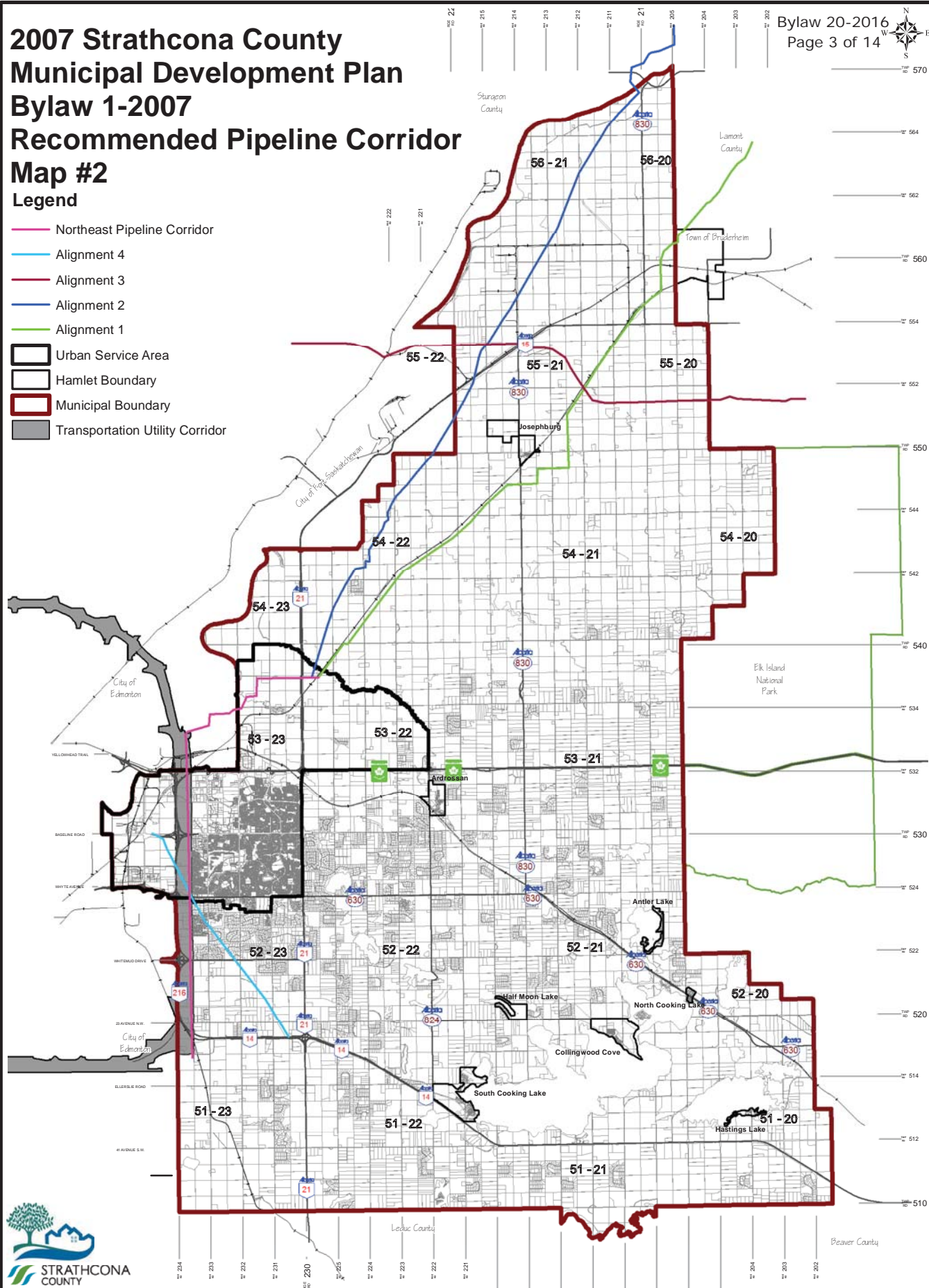
Proposed 2013MDP004

Last Amended By: Bylaw 15-2016, Oct 25, 2016  
Date Adopted By: Bylaw 1-2007, May 29, 2007

# 2007 Strathcona County Municipal Development Plan Bylaw 1-2007 Recommended Pipeline Corridor Map #2

## Legend

- Northeast Pipeline Corridor
- Alignment 4
- Alignment 3
- Alignment 2
- Alignment 1
- Urban Service Area
- Hamlet Boundary
- Municipal Boundary
- Transportation Utility Corridor



Source: 2007 Strathcona County Municipal Development Plan Bylaw 1-2007  
Regional Pipeline Corridor and Setback Study, Nov 2004

This map represents a broad and conceptual illustration of the desired land development structure and is not intended to provide site specific direction to land use regulation.





Proposed 2013MDP004

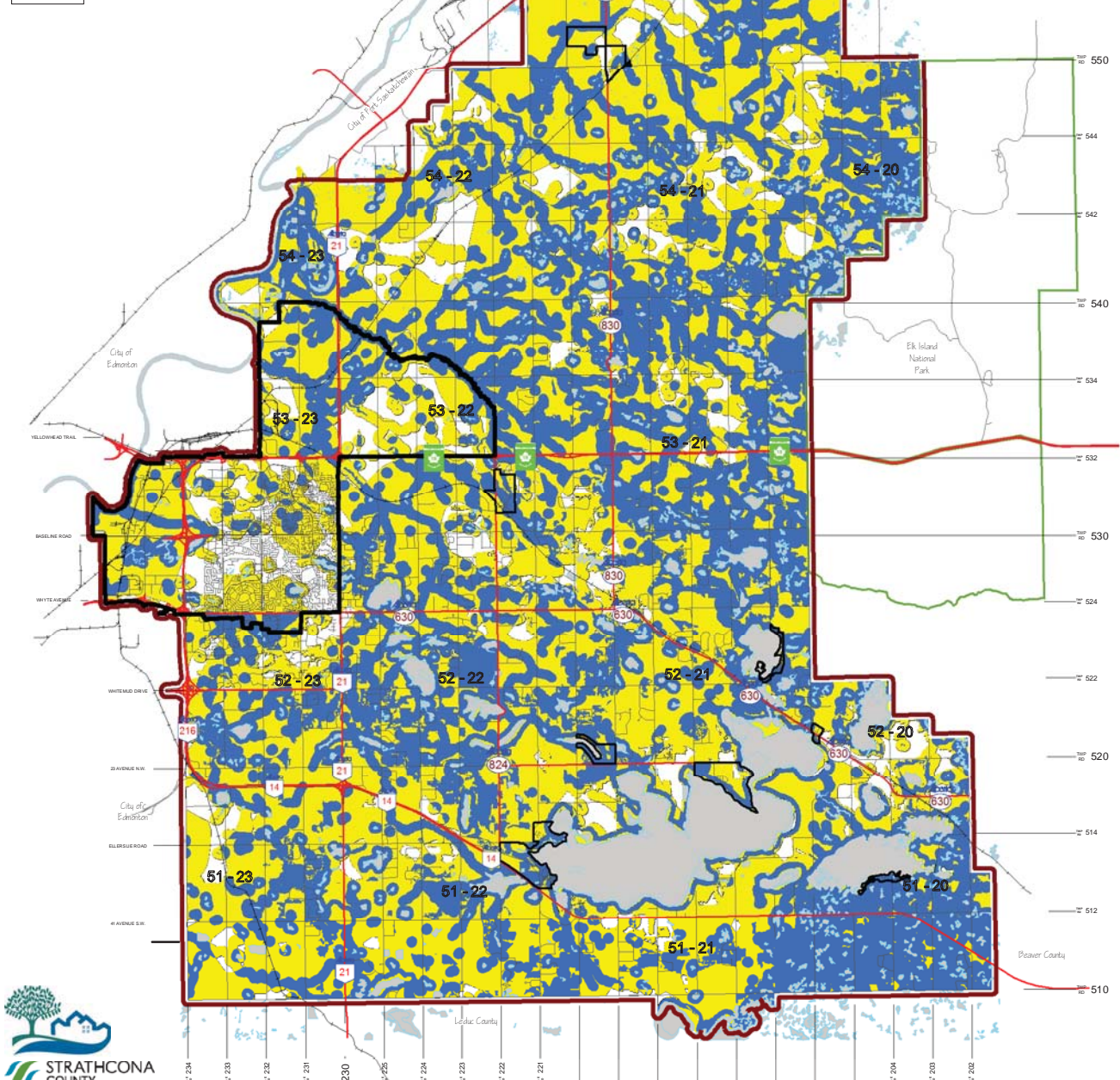
Last Amended By: Bylaw 15-2016, Oct 25, 2016  
Date Adopted By: Bylaw 1-2007, May 29, 2007



# 2007 Strathcona County Municipal Development Plan Bylaw 1-2007 Priority Environment Management Area's (PEMA) Map #3

## Legend

-  Urban Service Area
-  High PEMA
-  Medium PEMA
-  Low PEMA



Source: 2006 Strathcona County Municipal Development Plan Bylaw 72-2006

This map represents a broad and conceptual illustration of the desired land development structure and is not intended to provide site specific direction to land use regulation.






**Proposed 2013MDP004**

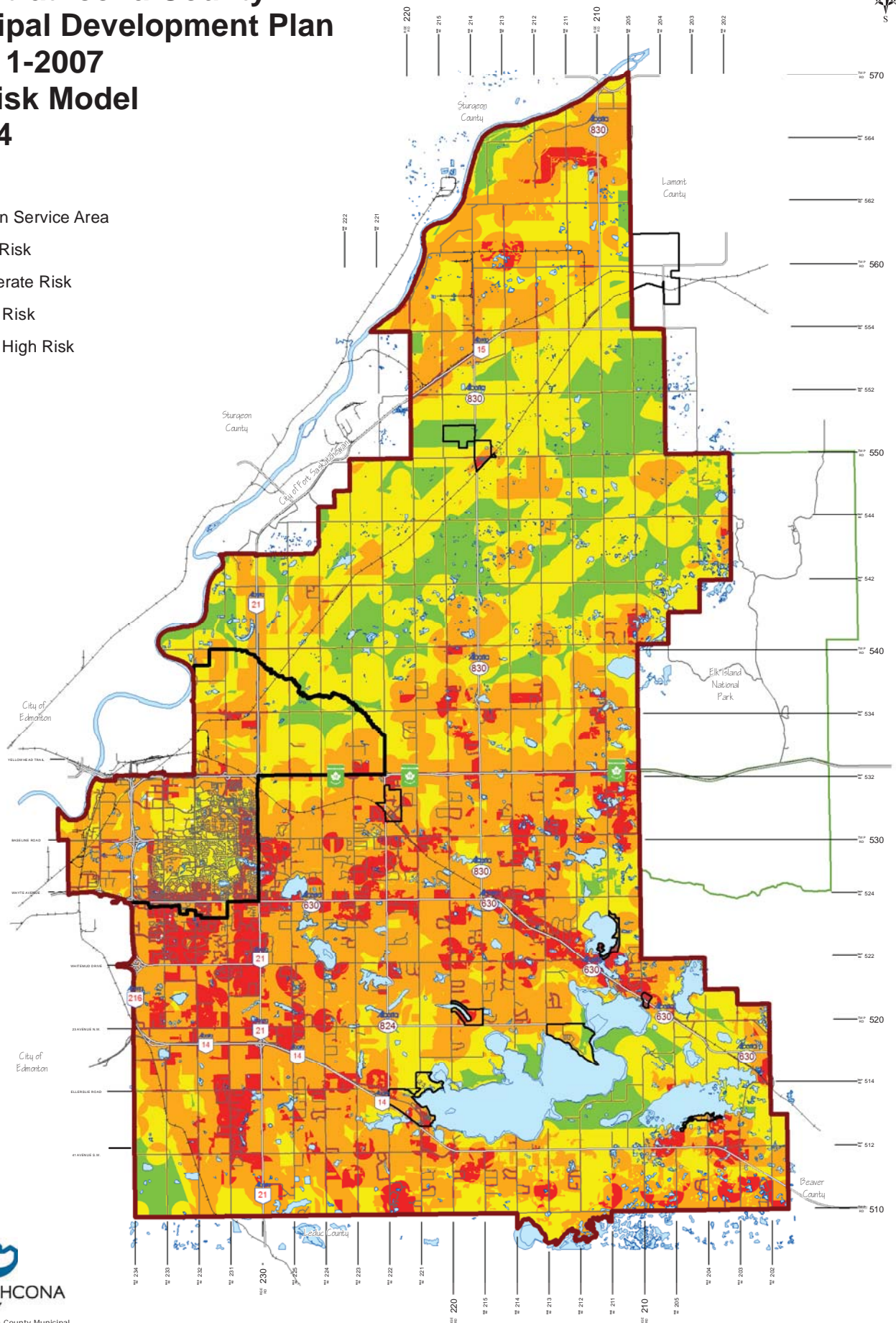
Last Amended By: Bylaw 15-2016, Oct 25, 2016  
Date Adopted By: Bylaw 1-2007, May 29, 2007



# 2007 Strathcona County Municipal Development Plan Bylaw 1-2007 Fire Risk Model Map #4

## Legend

-  Urban Service Area
-  Low Risk
-  Moderate Risk
-  High Risk
-  Very High Risk



Source: 2007 Strathcona County Municipal Development Plan Bylaw 1-2007

This map represents a broad and conceptual illustration of the desired land development structure and is not intended to provide site specific direction to land use regulation.

Proposed 2013MDP004

Last Amended By: Bylaw 15-2016, Oct 25, 2016  
Date Adopted By: Bylaw 1-2007, May 29, 2007

# 2007 Strathcona County Municipal Development Plan Bylaw 1-2007 Community Facilities - Rural Map #5

Bylaw 20-2016  
Page 6 of 14



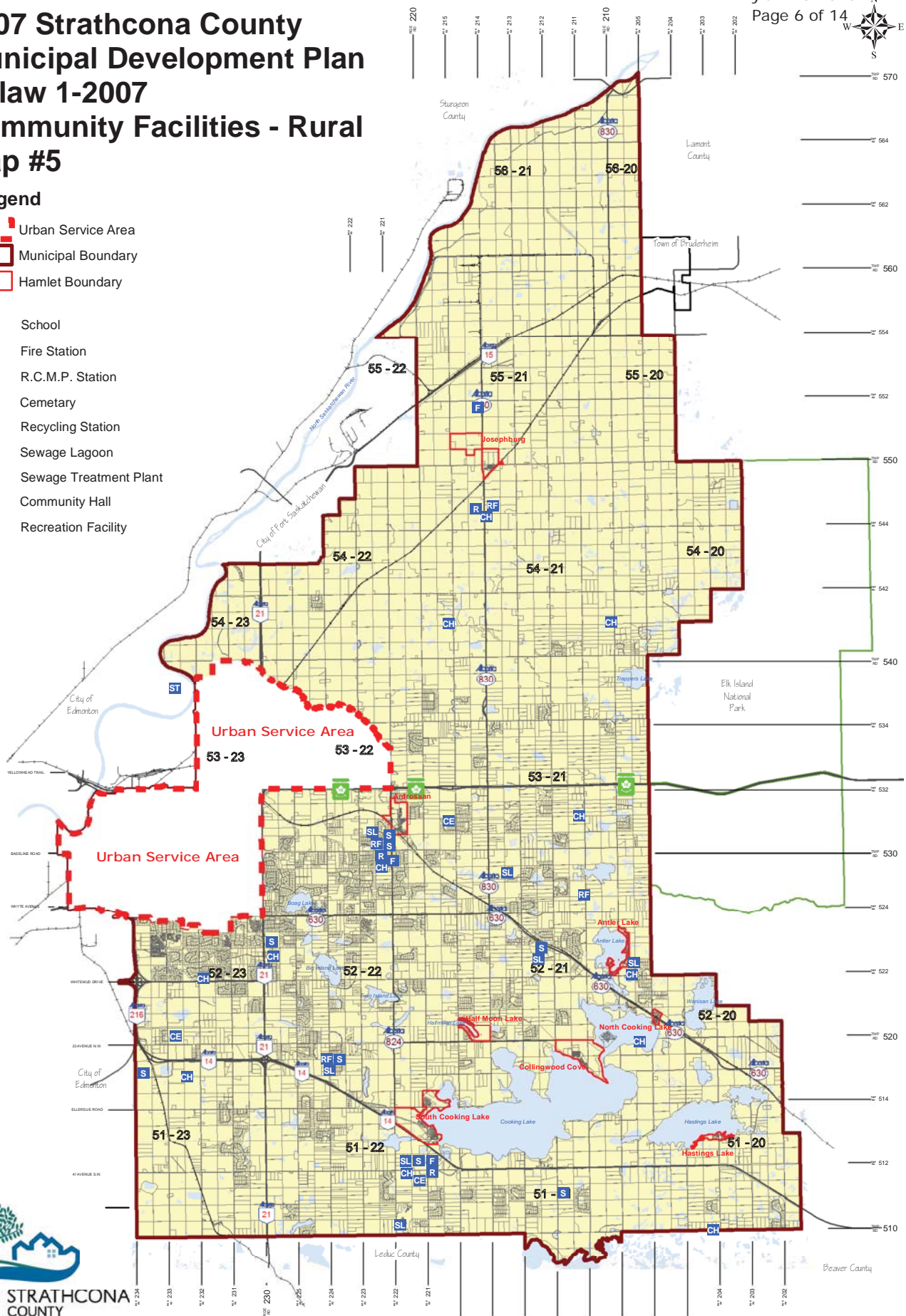
## Legend

- Urban Service Area
- Municipal Boundary
- Hamlet Boundary

- S School
- F Fire Station
- P R.C.M.P. Station
- CE Cemetery
- R Recycling Station
- SL Sewage Lagoon
- ST Sewage Treatment Plant
- CH Community Hall
- RF Recreation Facility



Source: 2007 Strathcona County Municipal Development Plan Bylaw 1-2007  
This map represents a broad and conceptual illustration of the desired land development structure and is not intended to provide site specific direction to land use regulation.



Proposed 2013MDP004




Last Amended By: Bylaw 15-2016, Oct 25, 2016  
Date Adopted By: Bylaw 1-2007, May 29, 2007

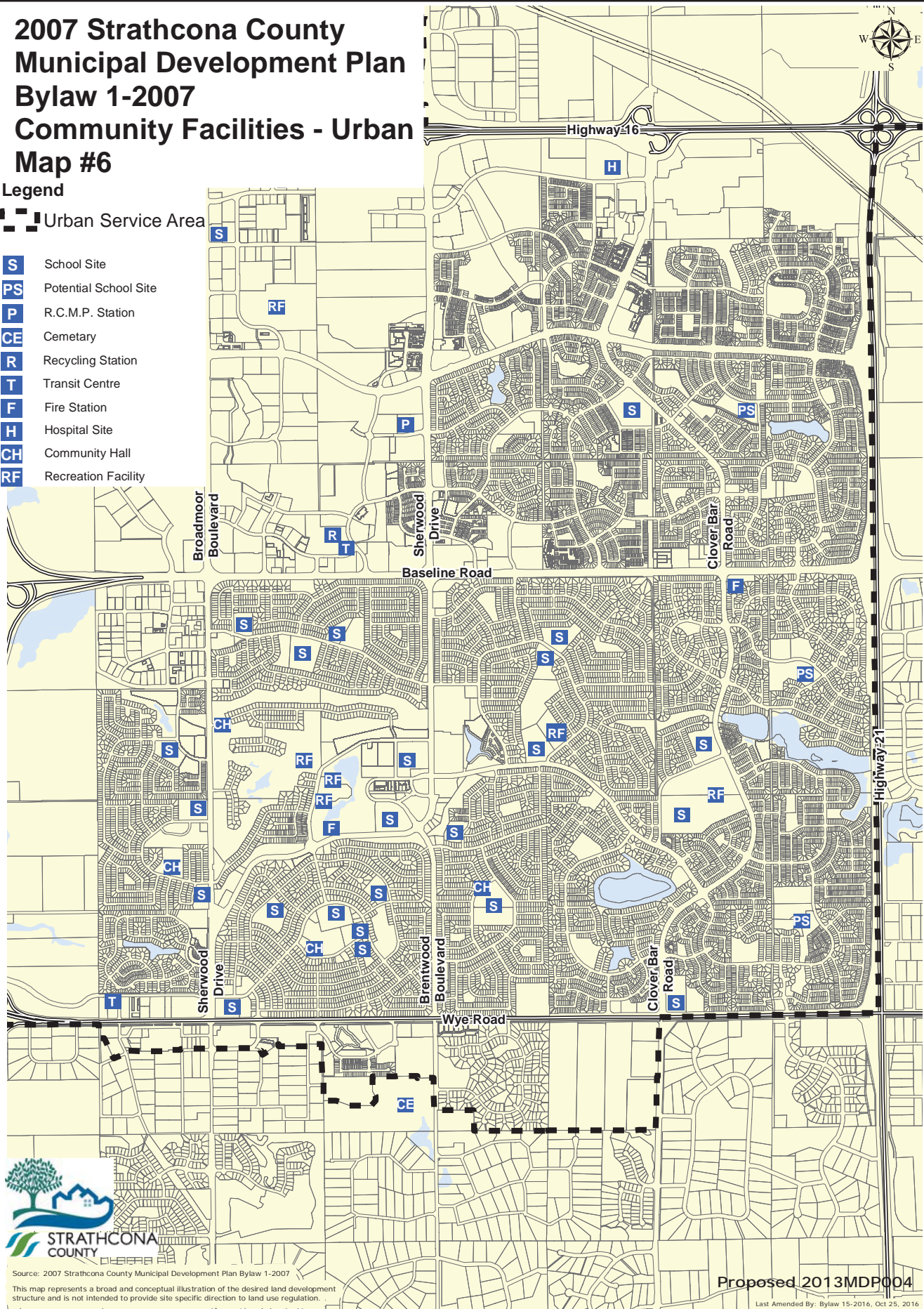


# 2007 Strathcona County Municipal Development Plan Bylaw 1-2007 Community Facilities - Urban Map #6

## Legend

 Urban Service Area

-  School Site
-  Potential School Site
-  R.C.M.P. Station
-  Cemetary
-  Recycling Station
-  Transit Centre
-  Fire Station
-  Hospital Site
-  Community Hall
-  Recreation Facility



Source: 2007 Strathcona County Municipal Development Plan Bylaw 1-2007

This map represents a broad and conceptual illustration of the desired land development structure and is not intended to provide site specific direction to land use regulation.

Proposed 2013MDP004




Last Amended By: Bylaw 15-2016, Oct 25, 2016  
Date Adopted By: Bylaw 1-2007, May 29, 2007

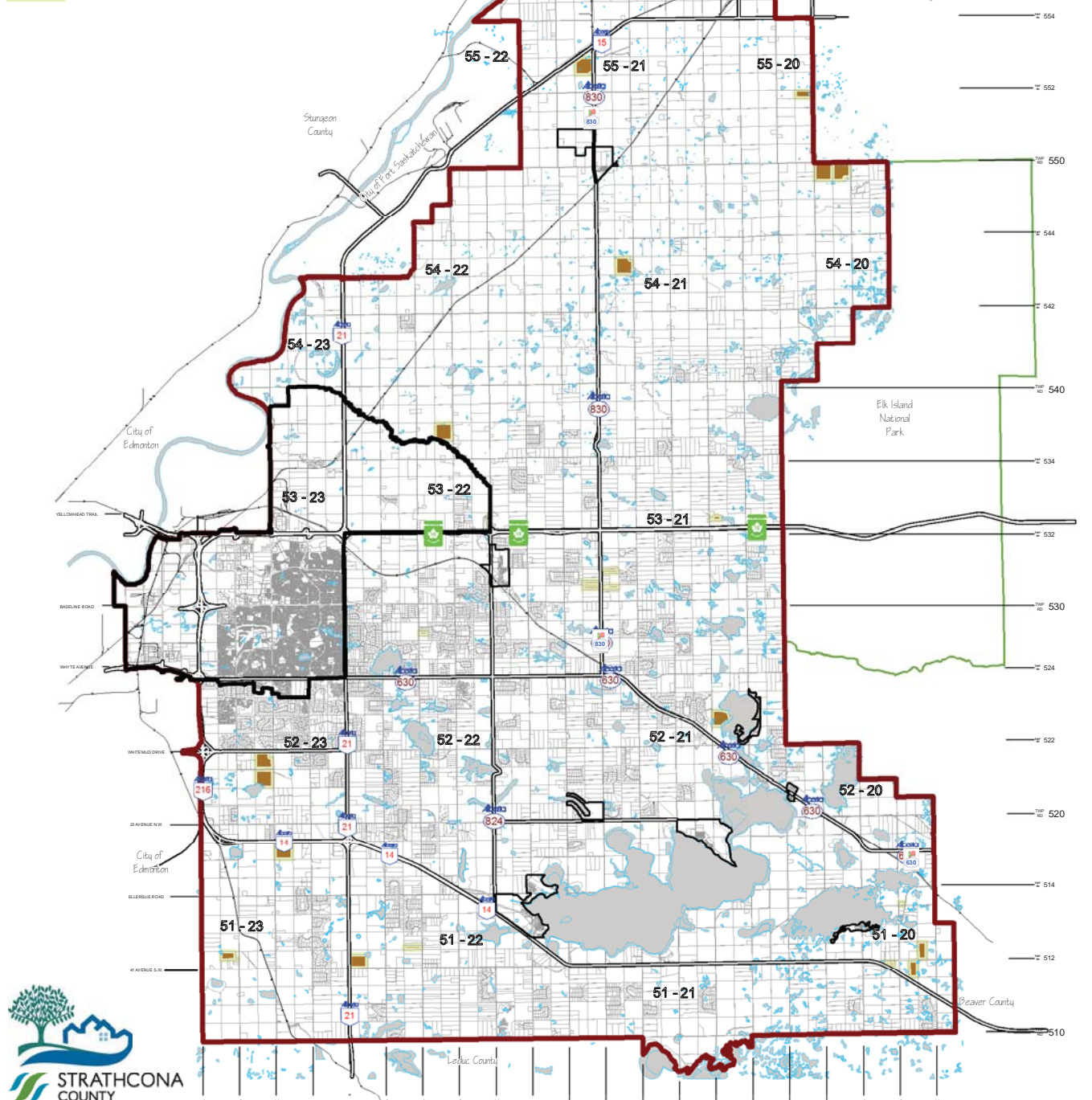


# 2007 Strathcona County Municipal Development Plan Bylaw 1-2007

## Existing Confined Feeding Operations

### Map #7 Legend

-  Urban Service Area
-  Municipal Boundary
-  Existing Confined Feeding Operations



Source: 2007 Strathcona County Municipal Development Plan Bylaw 1-2007

This map represents a broad and conceptual illustration of the desired land development structure and is not intended to provide site specific direction to land use regulation.

Proposed 2013MDP004

Last Amended By: Bylaw 15-2016, Oct 25, 2016  
Date Adopted By: Bylaw 1-2007, May 29, 2007

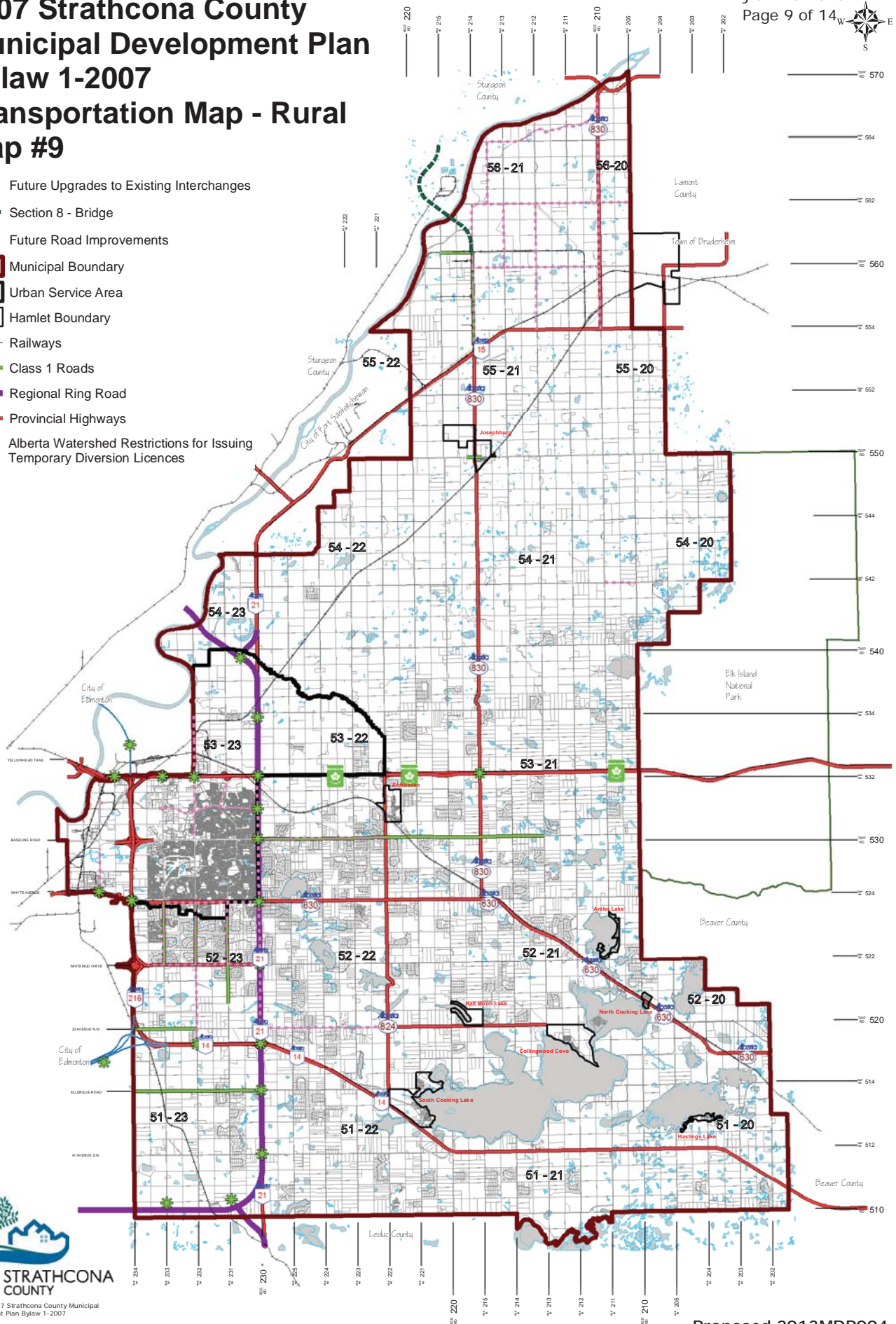


# 2007 Strathcona County Municipal Development Plan Bylaw 1-2007 Transportation Map - Rural Map #9

Bylaw 20-2016  
Page 9 of 14



- Future Upgrades to Existing Interchanges
- Section 8 - Bridge
- Future Road Improvements
- Municipal Boundary
- Urban Service Area
- Hamlet Boundary
- Railways
- Class 1 Roads
- Regional Ring Road
- Provincial Highways
- Alberta Watershed Restrictions for Issuing Temporary Diversion Licences



Source: 2007 Strathcona County Municipal Development Plan Bylaw 1-2007

This map represents a broad and conceptual illustration of the desired land development structure and is not intended to provide site specific direction to land use regulation.

Proposed 2013MDP004

Last Amended By: Bylaw 15-2016, Oct 25, 2016  
Date Adopted By: Bylaw 1-2007, May 29, 2007



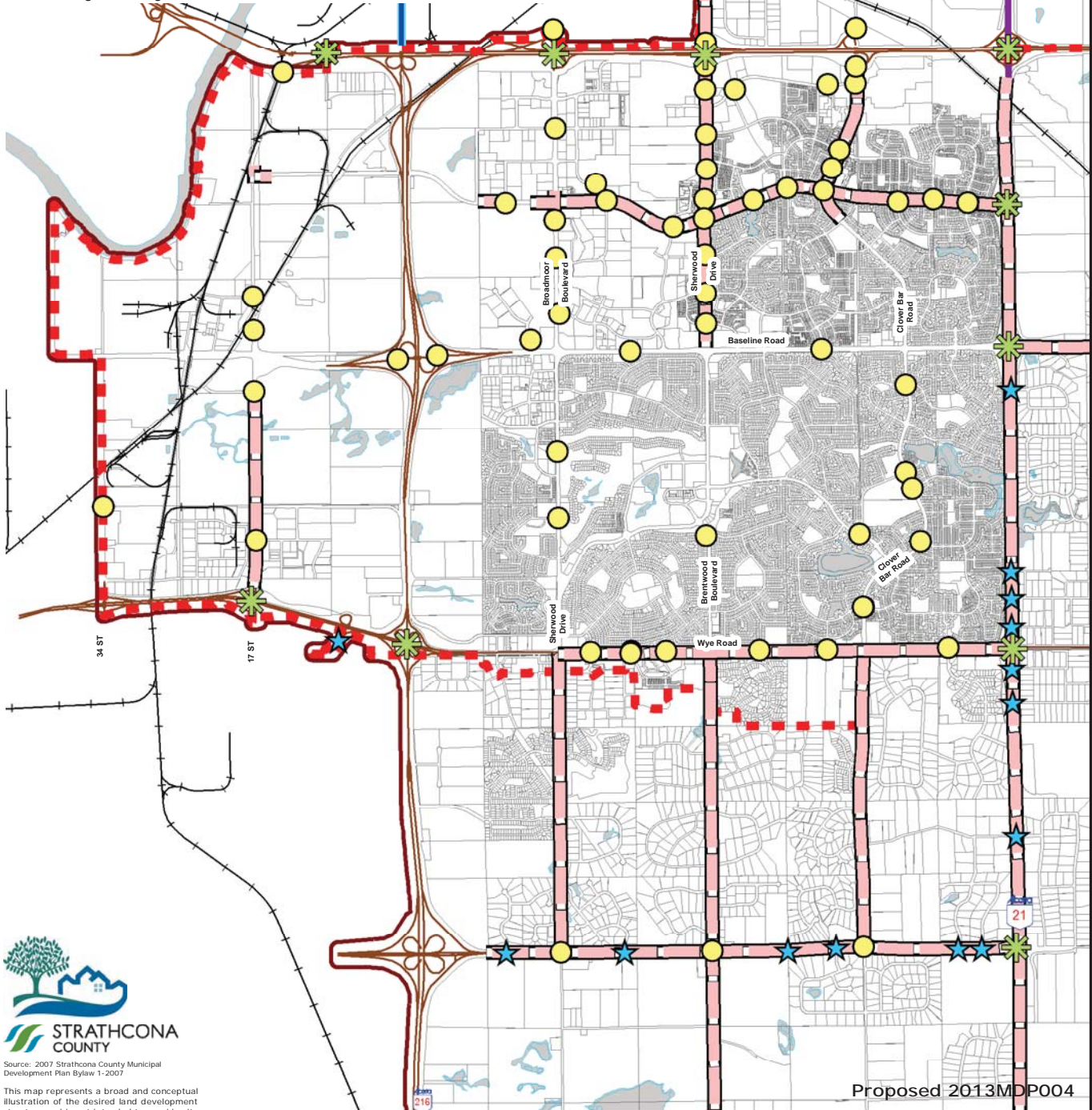
# 2007 Strathcona County Municipal Development Plan Bylaw 1-2007 Transportation Map - Urban Map #10

Bylaw 20-2016  
Page 10 of 14



## Legend

- Municipal Boundary
- Urban Service Area
- Provincial Highways
- Railways
- Future Road Improvements
- Anthony Henday
- Regional Ring Road
- Future Upgrades to Existing Interchanges
- Future Traffic Signals
- Future Highway Access Closures



Source: 2007 Strathcona County Municipal Development Plan Bylaw 1-2007

This map represents a broad and conceptual illustration of the desired land development structure and is not intended to provide site specific direction to land use regulation.

Proposed 2013MDP004

Last Amended By: Bylaw 15-2016, Oct 25, 2016  
Date Adopted By: Bylaw 1-2007, May 29, 2007








# 2007 Strathcona County Municipal Development Plan Bylaw 1-2007 Joint Planning Study Area Map #11

Bylaw 20-2016  
Page 11 of 14



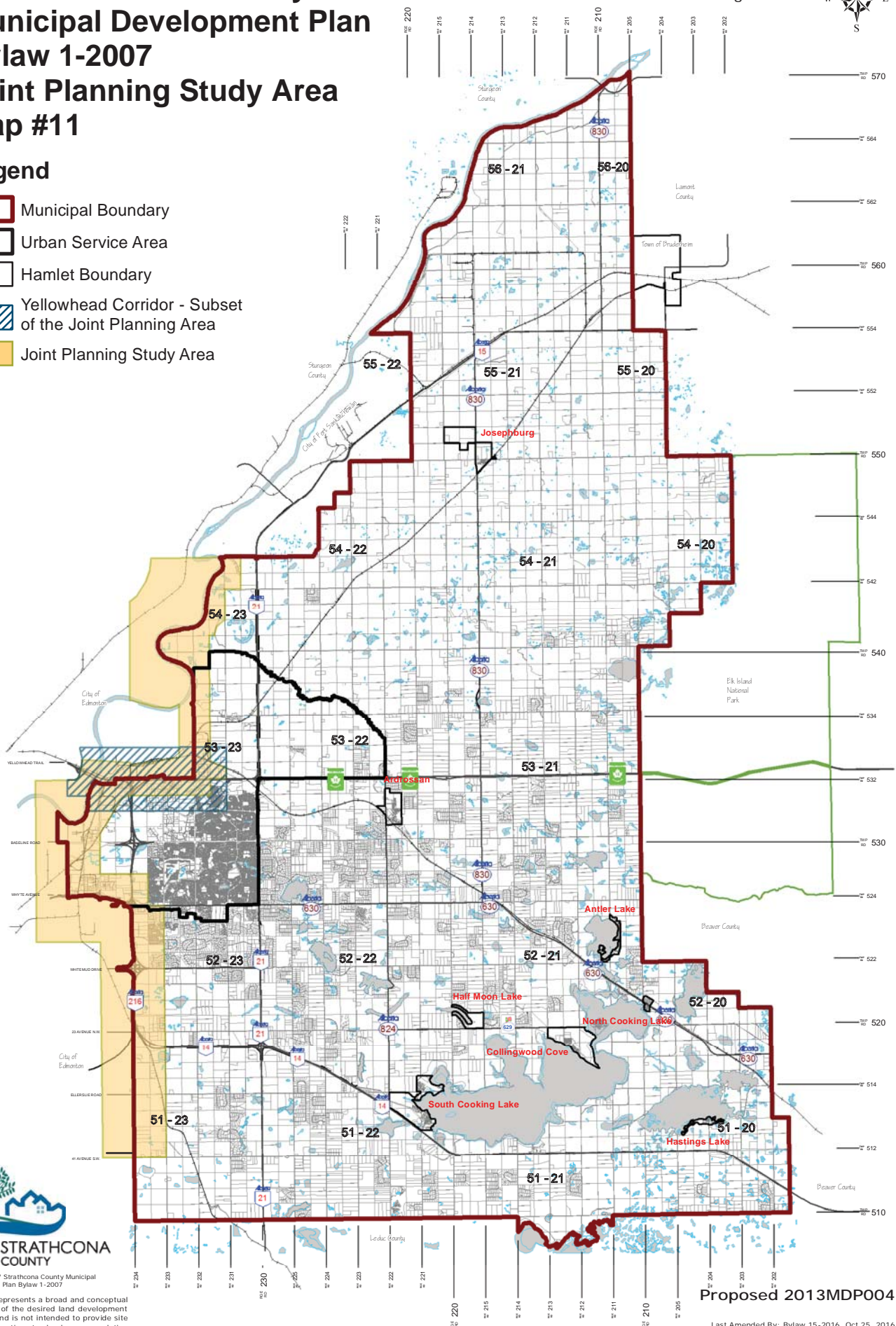
## Legend

-  Municipal Boundary
-  Urban Service Area
-  Hamlet Boundary
-  Yellowhead Corridor - Subset of the Joint Planning Area
-  Joint Planning Study Area



Source: 2007 Strathcona County Municipal Development Plan Bylaw 1-2007.

This map represents a broad and conceptual illustration of the desired land development structure and is not intended to provide site specific direction to land use regulation.



Proposed 2013MDP004

Last Amended By: Bylaw 15-2016, Oct 25, 2016  
Date Adopted By: Bylaw 1-2007, May 29, 2007

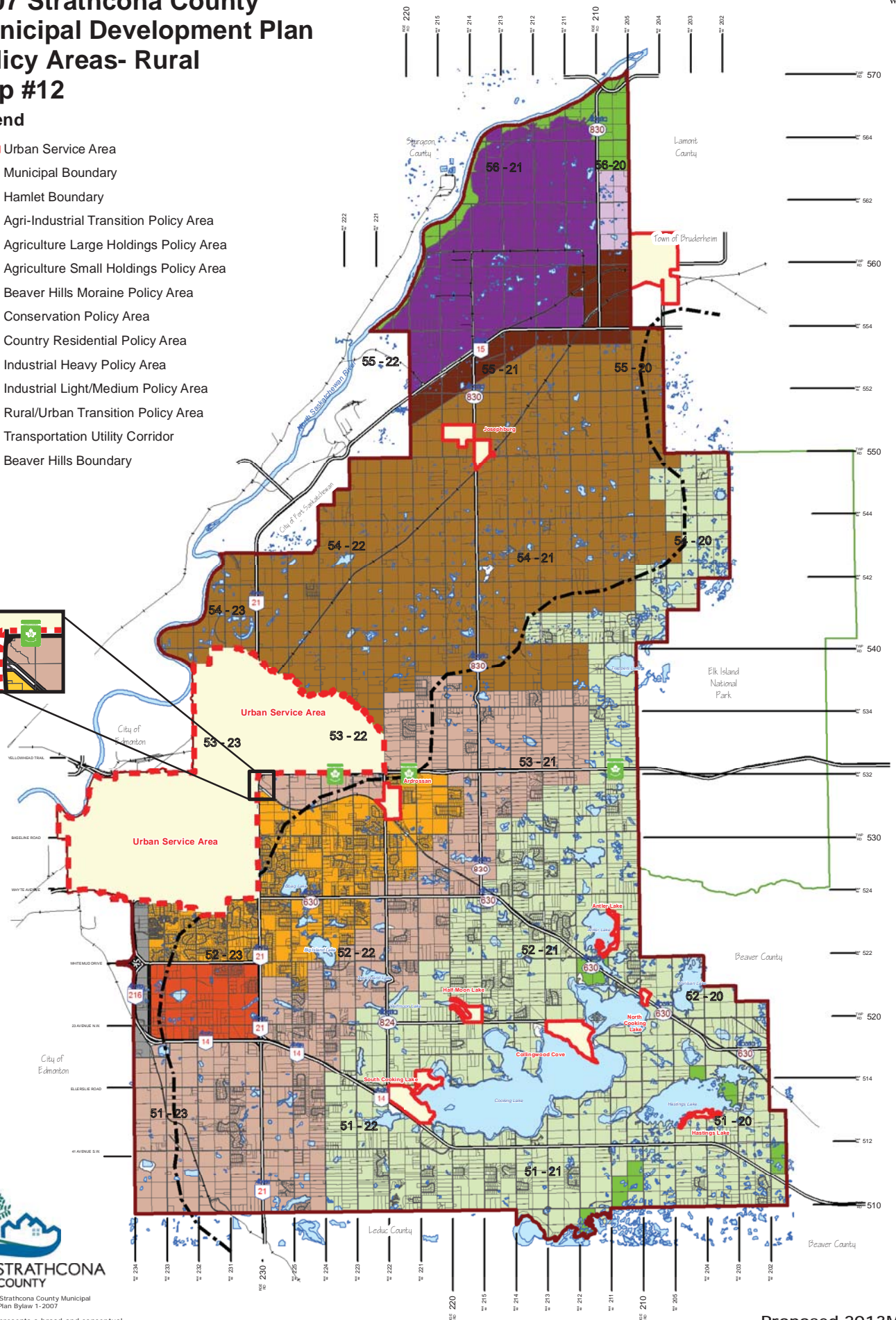




# 2007 Strathcona County Municipal Development Plan Policy Areas- Rural Map #12

## Legend

- Urban Service Area
- Municipal Boundary
- Hamlet Boundary
- Agri-Industrial Transition Policy Area
- Agriculture Large Holdings Policy Area
- Agriculture Small Holdings Policy Area
- Beaver Hills Moraine Policy Area
- Conservation Policy Area
- Country Residential Policy Area
- Industrial Heavy Policy Area
- Industrial Light/Medium Policy Area
- Rural/Urban Transition Policy Area
- Transportation Utility Corridor
- Beaver Hills Boundary



Source: 2007 Strathcona County Municipal Development Plan Bylaw 1-2007  
This map represents a broad and conceptual illustration of the desired land development structure and is not intended to provide site specific direction to land use regulation.






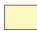








Proposed 2013MDP004

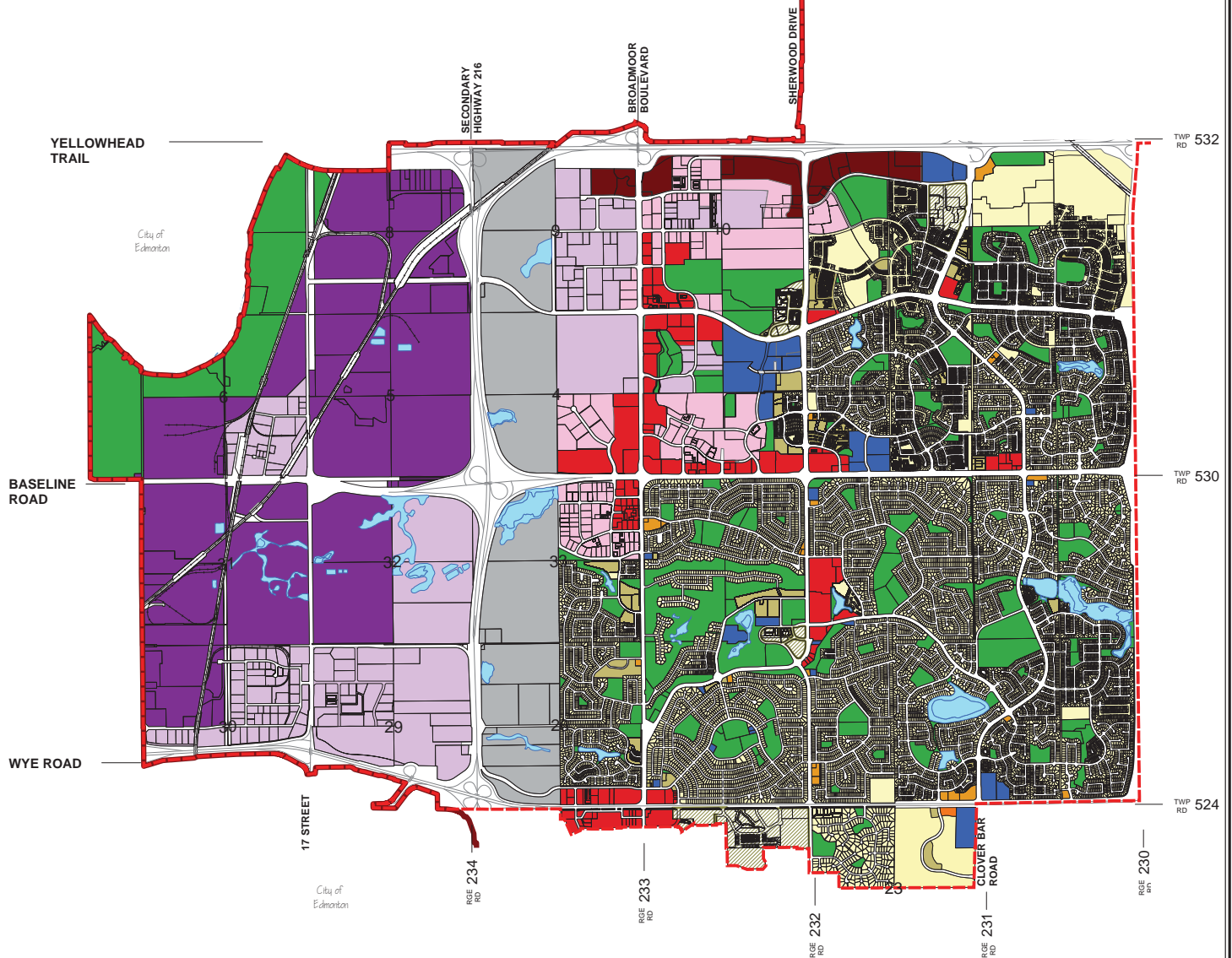
Last Amended By: Bylaw 15-2016, Oct 25, 2016  
Date Adopted By: Bylaw 1-2007, May 29, 2007



# 2007 Strathcona County Municipal Development Plan Policy Areas - Urban Map #13 Page 1 of 2

## Legend

- |  |  |
|--|--|
|  Urban Service Area               |  Industrial Light/Medium Policy Area    |
|  Municipal Boundary               |  Institutional Policy Area              |
|  Commercial Arterial Policy Area  |  Low Density Residential Policy Area    |
|  Commercial Service Policy Area   |  Medium Density Residential Policy Area |
|  Commercial Community Policy Area |  Open Space                             |
|  Commercial Hwy 16 Policy Area    |  Transportation Utility Corridor        |
|  Industrial Heavy Policy Area     |  Urban Village                          |



**STRATHCONA  
COUNTY**

This map represents a broad and conceptual illustration of the desired land development structure and is not intended to provide site specific direction to land use regulation.

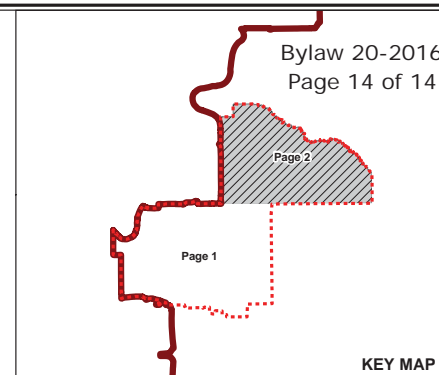
Proposed 2013MDP004

Last Amended By: Bylaw 15-2016, Oct 25, 2016  
Date Adopted By: Bylaw 1-2007, May 29, 2007

# 2007 Strathcona County Municipal Development Plan Policy Areas - Urban Map #13 Page 2 of 2

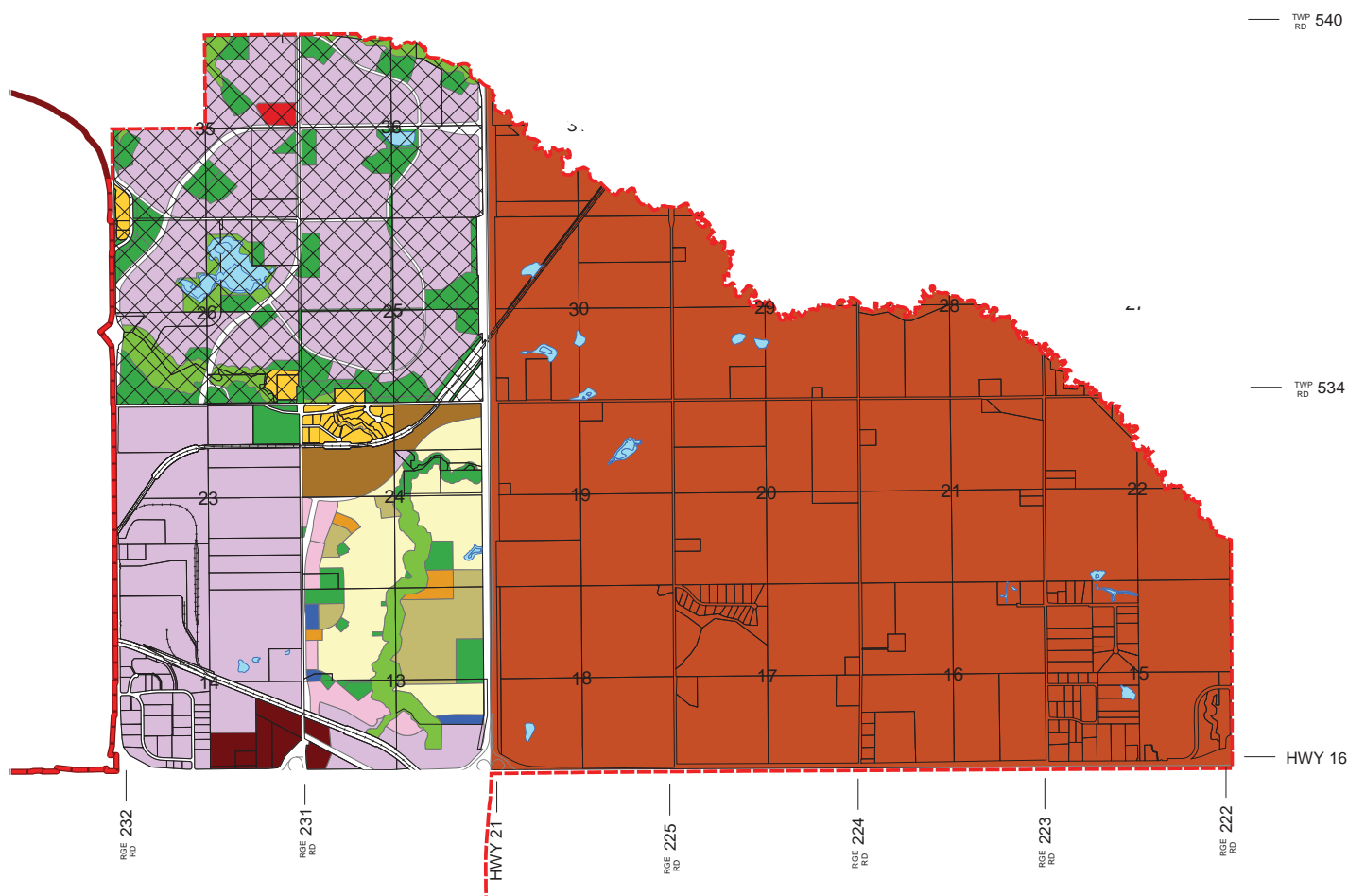
Schedule N

Bylaw 20-2016  
Page 14 of 14



## Legend

- |  |  |
|--|--|
| Urban Service Area                     | Commercial Service Policy Area         |
| Municipal Boundary                     | Conservation Policy Area               |
| West of 21 Area Concept Plan           | Country Residential Policy Area        |
| Urban Reserve Policy Area (Bremner)    | Industrial Light/Medium Policy Area    |
| Agriculture Large Holdings Policy Area | Institutional Policy Area              |
| Commercial Arterial Policy Area        | Low Density Residential Policy Area    |
| Commercial Community Policy Area       | Medium Density Residential Policy Area |
| Commercial Hwy 16 Policy Area          | Open Space                             |



This map represents a broad and conceptual illustration of the desired land development structure and is not intended to provide site specific direction to land use regulation.

Proposed 2013MDP004

Last Amended By: Bylaw 15-2016, Oct 25, 2016  
Date Adopted By: Bylaw 1-2007, May 29, 2007